

Martin-Till

WELCOME TO THE MARTIN-TILL® PLANTING SYSTEM



2021 PRODUCT CATALOG



martintill.com

800.366.5817

A Letter From Our Founder

Thank you for considering our products. We feel honored to be able to serve your needs. As farmers ourselves, we know the frustration that unforeseen obstacles can bring, especially inclement weather. While we can't do anything about untimely rains, we can help equip your planter to allow for more time spent planting and less time waiting to get seed in the ground.



Our customers believe that Martin-Till® products provide an excellent return on their investment. We know this because a large percentage of them are repeat customers. Our planter attachments help make it possible to plant into higher levels of residue and moisture. Higher levels of mulch means less erosion, improved soil tilth and fertility, which can reduce production costs. Our goal is to increase yields and save you time and money. We hope you find something in our catalog that will make this year's planting go better for you. After all, you deserve the best!

Howard Martin





Planting system.....	4-5
Hub and Bearing Assemblies.....	6
Wheels and Scrapers.....	7
Floating Row Cleaner Options and Versions.....	8-9
Floating Row Cleaners for Coulters.....	10
Parallel Link Floating Row Cleaners.....	11
Narrow Floating Row Cleaners.....	12
Floating Row Cleaners without Coulters.....	13
Row Cleaner Adjustment system.....	14-15
Unit-Mounted Fertilizer Openers.....	16
Combination Floating Row Cleaners and Fertilizer Openers.....	17-18
Rigid Mounted Pin Adjust Row Cleaners and Mounting Brackets.....	19-20
Closing Wheels.....	21-22
Closing Wheel Options.....	23
NEW CCR Two Stage Closing System.....	24
NEW Second Stage Closer.....	25
Case IH Closing Wheels.....	26-27
Grain Drill Closing Wheels.....	28
Weight Transfer System.....	29-31
Customer Testimonials/Notes.....	32-33
How to order.....	34
Warranty.....	35



Opening Systems

Residue clearing wheels and side treader wheels clean crop residue, dirt clods and other obstacles from the row in order to improve:

- Furrow cleaning, for improved seed-to-soil contact
- Planter row unit ride, for less bounce and twisting of unit
- Ease of disc v-opener cutting by lightly tilling the seed furrow
- Consistency of emergence by allowing soil to warm up sooner

Smart Clean™

Row Cleaner Adjustment System

The exclusive Martin-Till® Smart Clean™ Row Cleaner Adjustment System provides an easy-to-use mobile or ISOBUS app to allow the operator to raise and lower floating row units on the go by varying the amount of air pressure in the cylinders. Benefits include:

- Enhanced row unit ride
- Improved ability to properly clean the soil ahead of seed furrow to reduce residue in furrow
- Wireless control allows for less equipment in the cab
- 1 psi increments allow for more precise row cleaner control
- Eliminates dangerous, time-consuming manual row cleaner adjustments
- Ability to lift up to reduce furrowing in loose soil or push down in heavy residue at the press of a button

**Now
ISOBUS
Compatible!**



Unit-Mounted Fertilizer Openers

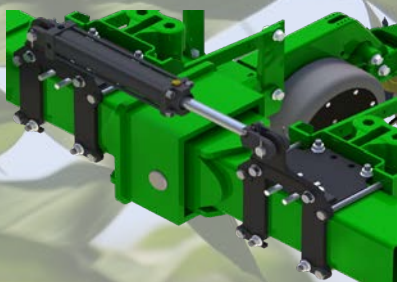
Mounted rigidly to the row units, Martin-Till® Unit-Mounted Fertilizer Openers (UMOs) follow the row unit over undulating terrain to place crop nutrients at seed depth either one, two or three inches from the seed furrow. Features and benefits include:

- Integrated design with row cleaner at front of row unit
- Low- to high-volume rate options
- Single or dual placement. Dual UMOs allow for yield-enhancing 2 X 3 x 2 fertilizer application
- Place nitrogen and fertilizer below soil surface to reduce off-site movement
- Increase nutrient use efficiency, early-season vigor and yields





Shown on 16 Row
JD1770



Weight Transfer System

Introducing an Innovative Weight Transfer System developed by Martin Industries to assist with re-distributing weight from center of planter to wings. Compaction reduces plant vigor and yield. Shallow or inconsistent planting due to poor control of planter wings also robs yield. Most planters have a “weight problem”. Excess weight in the center of the planter or improper weight distribution is a constant concern.

- In-Cab Control Box—Allows for easy adjustment as you plant
- Kits available for 12 and 16 Row JD 1770/1775, 1790/1795 & 24 Row JD 1770.
- Bolt-On Bracket design (no welding) provides easy installation
- Interlocking tab and slot design fit together to transfer load to the tool bar

New

Second Stage Closing
system Press Wheel! Fits most
OEM closing wheel arms.



Shown with
BSCW1444C.
Sold separately.

Closing Systems

Often overlooked, proper row closing is a key component of a profitable planting program. Martin-Till® Spading Closing wheels and twisted drag chains help you seal the row for more consistent germination and emergence.

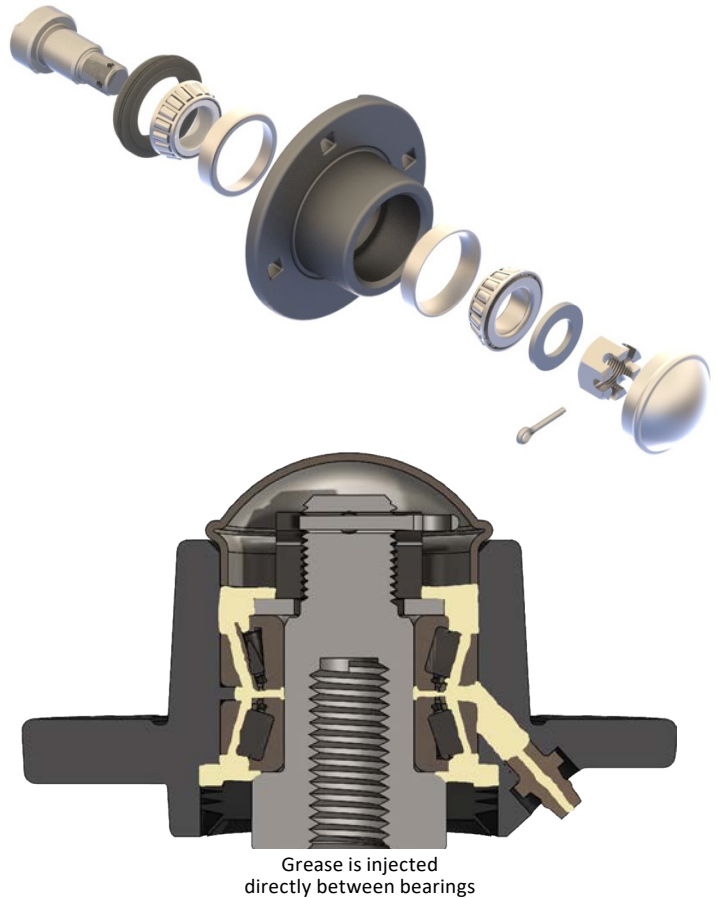
- Close the seed furrow slot without compacting the soil surface
- Reduce infiltration of light, water, air, or chemicals into seed germination zone
- Fracture sidewall compaction to improve root development
- Improve closing action in difficult cover crop situations by adding filler plates

Hub & Bearing Assemblies

HA44270D Greaseable Tapered Roller Bearing with 3 lip seal

All Row Cleaners except 1345 use our HA44270D hub, featuring double tapered roller bearings with a triple lip seal designed to be flushed out with grease. No need to worry about over greasing this hub we recommend greasing it annually until grease comes out to flush out contaminants.

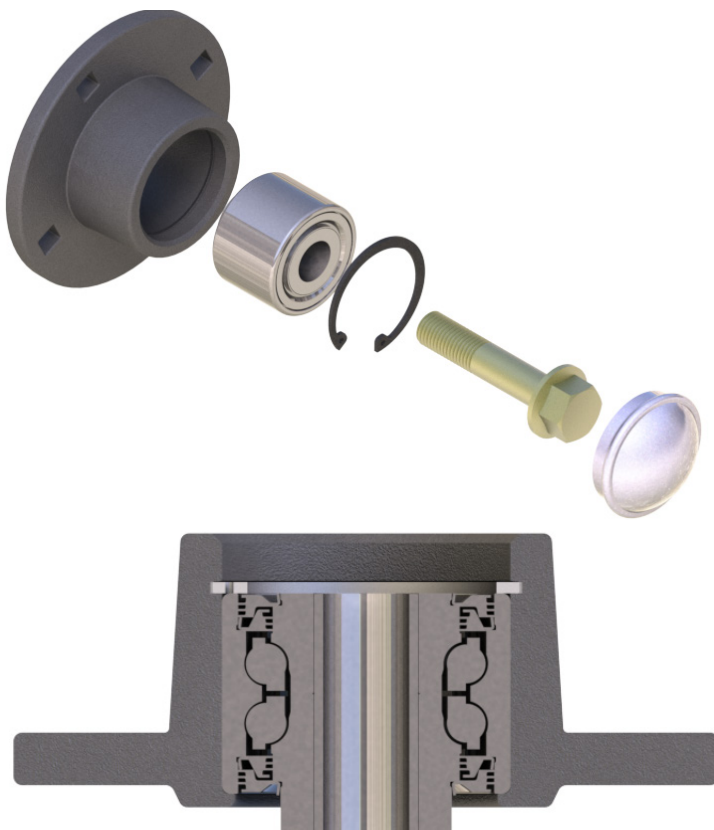
Customers often tell us they have planted with their Martin-Till® Row Cleaners for many, many years without needing to change the bearings. Cost savings over time and less in-field or shop labor maintenance are two important reasons farmers respect and choose Martin-Till® again and again.



CHU44C

Double Row Ball Bearing with 6 lip seal for 1345 Row Cleaners

- Heavy duty 5205 double row ball bearing
- Maintenance free bearing features a six-lip seal design allows the life of the bearing to be increased over typical two- and three-lip designs, while removing the need for routine maintenance
- Seal design features improved contamination exclusion while maintaining standard envelope dimensions



Choice of Spike or Razor Wheel



The 13" **Spike** wheel with 14 teeth moves the least amount of soil. The larger soil window between the teeth allows residue to be moved without moving vital soil away from the row center. The spike teeth intersecting lightly till the seed zone. It comes in lefts and rights and is from 3/8" thick Boron Steel heat treated for extended long life.

The Spike wheel combined with provided internal deflectors (scrapers) performs well in green material.



Deflector installed



The 12.5" **Razor** wheel with 12 teeth performs excellently in cover crops. It will not move as much soil as competitive products but slightly more than a spike wheel. The angled teeth drop material as the wheel exits the ground preventing wrapping and when combined with our internal deflector it remains wrap free even in standing cover crops. It comes in lefts and rights with full bevel on one side vs competitive products with some bevel on both sides causing theirs to wear blunt much faster. The Razor wheel is made from 1/4" T-1 then heat treated a second time for extended long life.

Add "Z" to end of part numbers to specify Razor Wheel
example: BD1360Z



Internal Deflectors come standard with all row cleaners.

No Deflector

Floating Row Cleaner Options

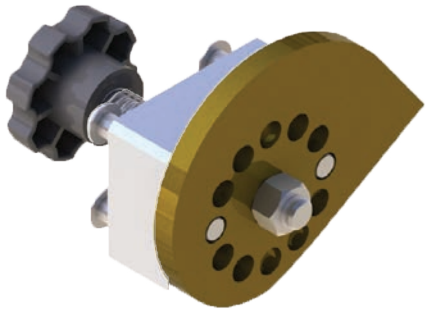


Side Treader Wheels

STW04A 3 and 4 bolt hubs

STW01K Kinze 6 bolt hub

A key component for successful planting, aluminum side treader wheels are purchased on over 95% of floating row cleaners and are designed to reduce trenching in soft soils. They also provide traction to help keep the row cleaners turning in loosely worked ground.



Cam Quick Adjust

CA03D 1360

CA03K 1360 for Kinze Coulter

CA45 1345

Cam adjusters are available for WA1360 and WA1345 row cleaners. They speed up the process of changing the working depth of the row cleaner frames. They are especially beneficial for growers who frequently switch from no-till to conventional tillage and do not have air cylinders.



Cylinder and Brackets

SCCYL2X2 cylinder

SC + Bundle Number for mounting brackets

(SC+BD1360) top and bottom cylinder mounting brackets

Unit Set Back Kits

USB70 Kinze

USB72 Deere

Moves the row unit back 6" to allow more clearance when installing floating row cleaners around certain no-till coulter configurations and are compatible with air bags and Precision Planting® Delta Downforce System® systems. Can be stacked for additional clearance.

Floating Row Cleaner Styles

ACCR1345 Narrow



ACCR1360 Wide



Shown with optional
Cam Adjust & Side Treader Wheels



ACCR1360 Wide or ACCR1345 Narrow Compact Clean Ride™

- ACCR1360 Measures less than 14" from the face plate uses HA44270D Heavy Duty Greaseable Tapered Roller Bearing Hub with 3 lip seal
- ACCR1345 Measures less than 16" from the face plate uses CHU44C cast hubs and long life 5205 double row bearing with 6 lip seal
- Over 4" of vertical travel
- Allows for fitting on planters with front frame mounted nitrogen coulters or where full-size row cleaners can't be used due to planter folding/unfolding issues
- Parallel linkage allows for easy floating action, especially when paired with Martin-Till® Smart Clean™ or Precision Planting® Clean Sweep® cylinders
- Factory pre-assembled chassis saves time and makes it a cinch to install
- Choice of Spike or Razor wheel can be installed intersected or offset
- HA44270D Heavy Duty Greaseable Tapered Roller Bearing Hub with 3 lip seal

1360 Floating Row Cleaner

- 60 degree heavy-duty frame
- Choice of Spike or Razor wheel can be installed intersected or offset
- HA44270D Heavy Duty Greaseable Tapered Roller Bearing Hub with 3 lip seal
- Patent No. 8,631,879, D601,593 and others pending

1345 Floating Row Cleaner

- 45 degree heavy duty frame for narrow rows and high speed planting
- Choice of Spike or Razor wheel can be installed intersected or offset
- CHU44C cast hubs and long life 5205 double row bearing with 6 lip seal
- Smart Clean and Cam adjust compatible

Floating Row Cleaner For Coulters

Basic with no options



BDC1360

- Attaches to JD 7200 (and later) series planters with a John Deere unit mounted no-till coulters. It will also install behind the John Deere single disc fertilizer opener (with extended parallel arms)
- Measures 22" from planter face plate to front of row cleaner wheels
- Choice of Spike or Razor wheel can be installed offset or intersected
- HA44270D Heavy Duty Greaseable Tapered Roller Bearing Hub with 3 lip seal
- 6" Row unit set back kits available (USB72)

Shown with optional Razor Wheels, Side Treader Wheels, Cylinder & brackets



BKC1360 Kinze 2000, 3000

BK4C1360 Kinze 4000

- Attaches to Kinze planters with a unit mounted no-till coulters
- Measures 22" from planter face plate to front of row cleaner wheels 6" Row unit set back kits available (USB70)
- Choice of Spike or Razor wheel can be installed offset or intersected
- HA44270D Heavy Duty Greaseable Tapered Roller Bearing Hub with 3 lip seal

C125R The original Floating Row Cleaner

Basic with no options



- Can be combined with most unit mounted coulters
- Choice of Spike or Razor wheel can be installed offset or intersected
- HA44270D Heavy Duty Greaseable Tapered Roller Bearing Hub with 3 lip seal
- Not recommended on JD 1700 series Contact your Martin sales rep for compatibility

ACCR1360 Wide or ACCR1345 Narrow

Compact Clean Ride (CCR) Parallel Link Row Cleaner

CCR™ improves planter performance with innovative cast parallel linkage design due to,

- Compact Design
- ACCR1360 has the same stance as our BD1360. Measures less than 14" from the face plate uses HA44270D Heavy duty greaseable tapered roller bearing hub with 3 lip seal
- ACCR1345 Perfect for high speed or narrow rows Measures less than 16" from the face plate uses CHU44C cast hubs and maintenance free long life 5205 double row bearing with 6 lip seal
- Parallel Linkage provides over 4" travel while maintaining a consistent wheel stance when riding over uneven ground
- Compatible with Precision Planting® Conceal® as well as other frame mounted openers
- Integrated Vertical Air Cylinder brackets for Clean Sweep® or Smart Clean™ cylinders purchased separately
- Chassis is assembled at factory for easier installation onto planter row unit
- Ductile cast linkages run on heavy duty hardened oil impregnated bushings
- Choice of Spike or Razor wheels can be set up so wheels offset or intersect. Intersecting Razor wheels tear thru cover crops in seed zone
- Additional Mounting kits available for most other row units including Case-IH 1200 series, Great Plains and more



ACCR1345 Row Cleaner with Air Control

We plant both corn and soybeans on our farm. We moved 20-inch rows recently and wanted to continue to run row cleaners. The CCR row cleaner did a great job of “peeling” the residue out of the furrow row and we didn’t have any plugging issues. I like the spike wheel and how it performed. It does not move a lot of soil. The CCR with the air cylinder control has better up and down travel than competitive row cleaners and are better built. The durability is excellent. We used all season long on both crop residue types and did not have one problem. They worked phenomenally!

Mark Albers — Denton, KS

1345 Narrow Floating Row Cleaner

For use without Coulters

As planters get faster and row width narrower a less aggressive row cleaner is needed. Our 1345 answers this call due to:

- Narrow 45 degree frame, ideal for high speed planting or narrow rows while still clearing path for gauge wheels
- Durable CHU44C Hub with long life 6 lip double row 5205 bearing, see hub page for details
- Choice of Spike or Razor wheel can be set up so wheels offset or intersect. Intersecting Razor wheels tear thru cover crops



BD1345D**



BD1345DZ*

BD1345

John Deere 7200 (and later) Case-IH 2000 with CNH heavy duty adapter

BKW1345

Kinze 2000 and 3000 series planters, White 6000, 8000 and 9000 series row units and Harvest International Laser Pro 1

BK41345

Kinze 4000 series

BCIH1345

Case IH 1200 series planters without frame mounted no till coulters.



1345 Row Cleaner

"Moving into faster planting speeds with newer planter technology, our needs from our row cleaners changed. The Martin-Till® 1345 row cleaner gave us the ability to increase our planter speed while still managing our residue without disrupting the ride of our row units, while still maintaining the superior performance that we have come to expect from Martin Industries."

Brandon Hunt – Hunt Farms

Farmer & Tractor Pulling Professional • Hopkinsville, KY

* Shown with Razor Wheels, Side Treader Wheels, Cam adjust and air cylinder with mounting brackets

**Shown with Spike Wheels, Side Treader Wheels, Cam adjust and air cylinder and mounting brackets

1360 Floating Row Cleaner

For use without Coulters

**BD1360 Basic
w/o options**



**BD1360 Deluxe
Options:
Side Treader Wheels
Cam adjust
Smart Clean Cylinder
and Brackets**

BD1360**

Attach to John Deere 7200 (and later) series planters without no-till coulters. BD1360 measures 19" from planter face plate to front of row cleaner wheels.

BKW1360***

Attach to Kinze 2000 and 3000 series planters, White 6000, 8000 and 9000 series row units and Harvest International Laser Pro 1, without unit mounted no-till coulters. BKW1360 measures 19" from planter face plate to front of row cleaner wheels.

BK41360

Attach to Kinze 4900 series planters without unit mounted no-till coulters. BK41360 measures 19" from face plate to front of row cleaner wheels.

BCIH1360****

Attach to Case IH planters without frame mounted no-till coulters. BCIH1360 measures 22" forward from the planter unit.

All row cleaners are shown with various options, including side treader wheels, cam adjuster, Smart Clean™ system and Razor Wheels.

** If equipping the rear units of a John Deere 1790 with 1360 row cleaners, long parallel arms all the way across the rear units are strongly encouraged, especially when operating in heavy residue.

*** If installing BKW1360 row cleaners on Kinze Twinline planters with no-till coulters, unit set back kits will be required behind the transport wheels on the rear units. Unit set-back kits (USB70) are available from Martin-Till®. If installing BKW1360 row cleaners on White planters, make sure there is enough clearance between the top of the BKW1360 frame and the bottom of the planter drive shaft. Some planters may have interference problems when the row cleaners raise up on uneven ground.

**** Please note the BCIH1360 will not fit on Case planters that have the hexagonal drive shaft under the parallel arms. (There is not enough upward clearance above the BCIH1360 and below the parallel arms to allow the frame to float sufficiently.)



On our farm we use the 1360 row cleaner on 2 Kinze planters. We have been using them for more than 5 years and they have required little to no maintenance. Also, our customers really like the Martin row cleaners. The durability and dependability of the Martin row cleaners allow us to recommend them with confidence.

**Aaron Wolf—Farmer & Precision Ag/Equipment
Sales—Wolf Farms Precision—Dixon, Illinois**

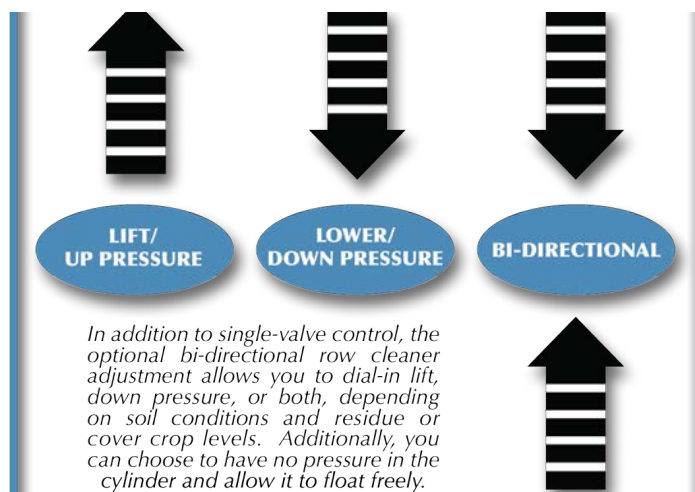


Row Cleaner Air Adjust System



*It's easy to add Smart Clean to any planter or strip till bar
For optimized Row Cleaner control at your finger tips!*

- Electronic Proportional Control valves automatically adjust to maintain desired psi
- Can be set in 1% (lbs.) increments
- App runs in background on your Smart Phone or Tablet
- Robust Bluetooth signal allows control of row cleaners while riding alongside or behind planter.
- System defaults back to last settings when power is cycled or connection is lost
- No bulky boxes or air lines in cab
- Bi-Directional control option allows for pressurizing both sides of cylinder at same time (Dual Valve only)



Smart Clean System & ACCR1360 Row Cleaner

Mike DeMean — Springville, IA

For years I have been looking for a row cleaner that I could go from conventional tillage all the way through to no-till. One that is also easy to adjust from the cab, along with being dependable and durable. By installing the CCR 1360 row cleaner and Smart Clean air control system -I have now found it. It worked flawlessly from the first time in the field. I am extremely happy with the setup. It saves a lot of time, and I look forward to using it for many years. The dependability and durability of the Martin products is evident. It's the reason sought out a system from Martin Industries.





The Smart Clean™ System makes manual row cleaner adjustments a thing of the past use your smart phone or tablet to raise lower your row cleaners.



Single Valve with one directional control valve lets you set psi then select up down or float.

Dual valve with one directional control valve works same as single valve plus you can set psi on a second circuit to control air bags.



Dual valve with two directional control valves allows section control for left right or front gang back gang. Control each section independently.

Bi-directional uses two valves allowing you to set separate air psi on both sides of piston. This method gives best control and does not come with a directional control valve.



Unit-Mounted Fertilizer Opener (UMO150)

Consistently places fertilizer in the ground without splattering on planter!



Patented
spring loaded knife places liquid in
the ground not on the planter!

- **Improved design** allows more ground clearance with a more narrow profile, reducing bulldozing.
- Standard 14" smooth blade for use in no-till conditions or a **NEW 15" notched blade** for use in min-till or conventional till .
- Mounting directly to the row unit allows precise placement from the seed, even when planting on contours
- Lateral spacing from seed can be 1", 2" or 3"
- Vertical depth can be even with seed or 3/4" above
- 1 1/2" OD Dry tube available for 2" and 3" lateral spacing



UMO150 Features

- Sturdy compact design
- Greaseable Double tapered bearing hub with two 3 lip seals
- 5mm thick (0.197") 14" blade or 15" notched blade
- Updated & improved placement shoe for less friction
- Adjustable furrow control strap
- Can be set to place liquids 1", 2", or 3" from seed row
- Can also be set to place liquids 3/4" above or even with seed depth
- Fits Deere 7000 - 1700, Kinze, White 6000/8000/9000 series, Harvest International Laser Pro and Case IH 1200 and 2000 series planters
- Patent Number 7,481,171

Adjustable Furrow
Control Strap
keeps soil in place.
Preventing blowout
of Furrow Wall.



Floating Row Cleaner & Fertilizer Opener Combo

BDUMO1345



BDUMO1345



BDUMO1360



Shown as Basic, without options.

Shown with optional Cam,
Side Treader Wheels and Air
Cylinder

BDUMO1360*, BDUMO1345*

1360 and 1345 floating row cleaners with UMO150 combination. Designed to install on 7200 (and later) John Deere, White 9000 and Harvest International Laser Pro 1. Can be used on Case IH 2000 with heavy duty adapter plate (Case IH PN 4805-4385 or Martin PN MTCNHD). BDUMO1360 measures 25" from face plate to front of row cleaner assembly.

BKWUMO1360, BKWUMO1345

1360 and 1345 floating row cleaners with UMO150 combination. Designed to install on 2000 and 3000 series Kinze planter units, John Deere 7000, and White 6000 and 8000 series planters. BKWUMO1360 measures 25" from face plate to front of row cleaner assembly.

BK4UMO1360, BK4UMO1345

1360 and 1345 floating row cleaners with UMO150 combination. Designed to install on Kinze 4000. BK4UMO1360 measures 25" from face plate to front of row cleaner assembly.

BCIHUMO1360, BCIHUMO1345

1360 and 1345 floating row cleaners with UMO150 combination. Designed to install on Case IH 1200 and 2000 series planter units without frame mounted no-till coulters. Case 1200 series requires heavy duty lower parallel arms. Will not work if drive shaft is under planter frame.



BDUMO1360

Dual UMO150

Compatible with 1360 & 1345 Row Cleaners

Features

- Dual UMOs allow for yield-enhancing 2 x 3 x 2 fertilizer application
- Your choice of Two, 14" smooth blades or 15" notched blades.
- Greaseable tapered roller bearings and 2 triple lip seals for durability
- Updated spring and placement shoe reduces friction on blade keeps blade turning in loose ground
- 3/8" O.D. delivery tube for maximum placement (up to 45 gallons per acre per opener)
- Furrow control strap reduces furrow blow-out while minimizing erosion and fertilizer spattering
- Places nutrients at various depths 3" on BOTH sides of seed for maximum usage
- Available with optional dry fertilizer tubes

Agronomic Benefits

- Allows more nutrients to be applied
- Increases root mass
- Enhances plant size and strength
- Promotes faster growth
- Improves yields



TESTING LOCATIONS	STARTER PLACEMENT SYSTEM	TREATMENTS	PLACEMENT	EMERGED POPULATION	POPULATION DIFFERENCE	NEPS %	BU./A.	BU./A. DIFFERENCE	RETURN ON INVESTMENT
IN, OH, IA	MARTIN-TILL® DUAL UMO 2x2x2	Control: 30 units UAN	2x2	32,088	-	83.6	201.4	-	-
		30 Units UAN	2x2x2	32,454	+366	82.9	207.5	+6.1	+23.55
		60 Units UAN	2x2x2	32,023	-65	83.3	211.3	+9.9	+25.01
		30 Units UAN + 1 qt Start Right	2x2	31,760	328	80.7	206.6	+5.2	+9.57
		30 Units UAN + 1 qt Start Right	2x2x2	31,773	-315	82.7	202.6	+1.2	-5.87
KY, CIL, SIL	YETTER DUAL 2968 SERIES	Control: 30 units UAN	2x2	31,246	-	92.8	199.0	-	-
		30 Units UAN	2x2x2	30,407	-839	91.7	204.6	+5.6	+21.62
		60 UNITS UAN	2x2x2	30,245	-1,001	90.7	208.5	+9.5	+23.47
		30 Units UAN + 1 qt Start Right	2x2	30,458	-788	91.0	204.0	+5.0	+8.8
		30 Units UAN + 1 qt Start Right	2x2x2	30,750	-496	91.9	202.7	+3.7	+3.78

Corn \$3.86/Bu. Start Right \$42.00/gal. UAN \$.044/unit of nitrogen. Individual results may vary.

Pin Adjust/Rigid Row Cleaners

Right: B1332/772
Below: B1532/772
Both shown with
MT772



Patent #5,507,351



B1334/892
Shown with
MT892



B1320/772
Shown with
MT772



Intersecting teeth reach the entire row middle and aid in cleaning one another. It's this patented cleaning action that spawned the Martin-Till® brand name, a name synonymous with superior performance in no-till and minimum-till planting.

Can be set offset or intersecting with your choice of 13" or 15" or 12.5" Razor Wheels.

WA1532 or WA1332

- Rigidly mounted directly to planter unit face plate
- Easily adjustable in 1/4" increments with lift assist handle and spring
- Movable axles, via the exclusive Martin-Till® D-Lock System, allow for several mounting positions (intersect, offset, retracted)
- 13" toothed steel wheels with diamond shaped points allow plenty of upward adjustment in loosely worked soils
- 15" version allows teeth to extend past edge of gauge wheel works great on ridges

WA1334

- Specifically designed for Case IH Early-Riser planters (For use with all pin adjust brackets which accept 2" stems)

WA1320N

The Martin-Till® Narrow Row Cleaner Model WA1320N is designed to clean residue from the vital seed trench area with less total disturbance than regular models. Two wheels are used to ensure residue is removed from the row center and not just dragged across the row, which may occur with single wheel models.

This model is recommended for 20" planters that have all units on one bar, operating in moderate residue. Because the cleaning teeth reach their maximum depth nearer the row than other models, the seed trench is more easily opened and the trench walls are more likely to crumble. The planter path will retain more moisture where this model is used than where the regular width cleaners are operated.

Pin Adjust/Rigid Row Cleaners

Mounting Brackets



MT772

Attaches to Kinze, Harvest International Laser Pro, John Deere, White 6000 & 9000 series. Accepts 1-1/2" wheel assembly.



MT810

Attaches to White 8000 Series planters. Accepts 1-1/2" wheel assembly.



MT610

Attaches to White 6000 Series planters with heavy duty down pressure springs. Accepts 1-1/2" wheel assembly.



MT1250

Attaches to Case IH 1200, 1250, 1300, and 2000 series planters for 2" tube wheel assemblies. Will not work with pneumatic down force systems.



MT892

Attaches to Case IH 800 and 900 series planters. For 2" tube wheel assemblies. (Additional mounting kit required for early 800 series planters).



MT512

Attaches to White 5000 Series planters. Bolts directly to planter, using existing holes. Accepts 1-1/2" wheel assembly.

Closing Wheels Dual 13" Spading



Shown with optional DK01 leveling kit for adverse conditions and Internal Deflectors pictured above. Drop down brackets are designed for paired 13" wheels to help maintain a level closing wheel arm assembly in loose soils. Internal Deflector set reduce build up of mud and residue to ensure fractured soil is placed evenly over seed trench.

BSCW1344 -

- For planters with bolt-on hubs: Deere 1700 series, Kinze late 2000 and up & White 6000 & 8000
- 3/8" thick, 13" diameter right and left toothed steel wheels with diamond shaped points
- CHU44B2 cast hubs and long life PEER® SEEDXTREME™ 40mm 5203 bearing with six-lip seal

BSCW1343 - For Deere 7200-7300 series

BSCW1341 - For planters with roll-pin attached hubs: Deere 7000, Kinze early 2000



Dimple Closing Wheels

BSCW1344D

For planters with bolt-on hubs: Deere 1700 series, Kinze 3000 and up, Harvest International, Horsch, White 6000,8000, and 9000 series and others.

*Also available for Deere 7000, 7200 and early Kinze 2000 series

- 1/2" thick, heat-treated T-1 wheels, with 20 rounded points out last poly/plastic
- Heat treated T-1 steel outlasts poly
- CHU44B2 cast hubs with long life PEER® SEEDXTREME™ 40 mm 5203 double row bearing with 6 lip seal

The BSCW1344D, are a sound choice for producers who plant most of their crops from medium moisture to dry conditions. The 20 rounded points help this closing system perform well in hard sod conditions plus they frequently outperform factory closing systems in no-till and minimum till soil conditions.



20 Rounded Points Crumble Sidewall.
Less aggressive than spike closing wheels. Works well on high speed planters



Closing Wheels Dual 14" Cupped Razor

BSCW1444C

For planters with bolt-on hubs:
Deere 1700 series, Kinze 3000 and up, Harvest International, Horsch, White 6000,8000, and 9000 series and others.

- 1/4" thick, heat-treated wheels, with 18 beveled razor teeth
- CHU44B2 cast hubs with long life PEER® SEEDXTREME™ 40 mm 5203 double row bearing with 6 lip seal

The BSCW1444C, 14", 14 toothed cupped razor wheels are a sound choice for producers who plant most of their crops from high moisture to dry conditions.

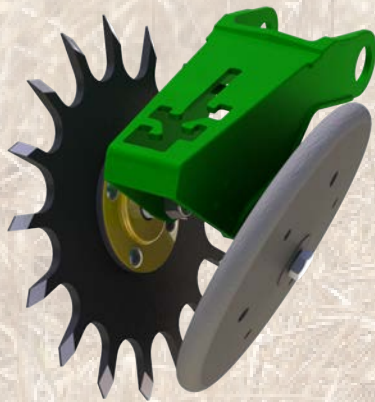


14 beveled, razor style teeth, Crumble Sidewalls while cupped design **Squeezes** trench closed.

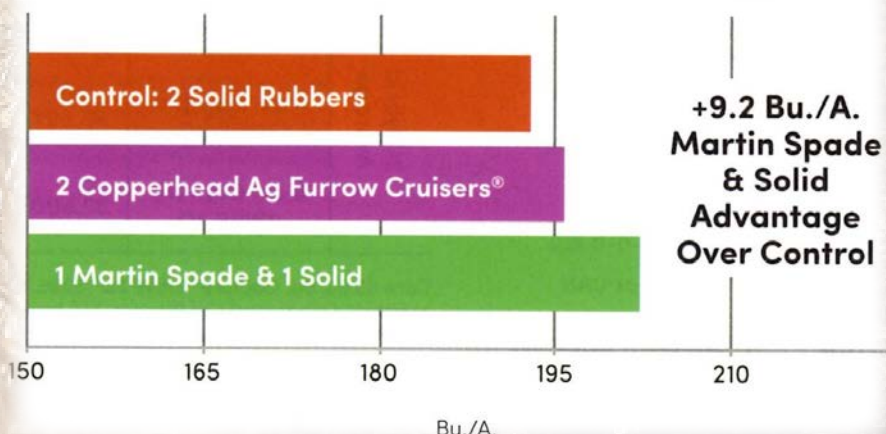
Single 15" Spading

BSCW1544 L/R

- For planters with bolt-on hubs: Deere 1700 series, Kinze, White, and Harvest International, Horsch and others
- 3/8" thick, 15" diameter right and left toothed steel wheels with diamond shaped points
- CHU44B2 cast hubs with long life PEER® SEEDXTREME™ 40mm 5203 double row bearing with six lip seal



2-YEAR CLOSING WHEEL YIELD ADVANTAGE



BSCW1543 L/R

For Deere 7200 series planters.

BSCW1541 L/R

For planters with roll-pin attached hubs:
Deere 7000, Kinze early 2000

Closing Wheel Options

DCK01 Drag Chain Kit

- Heavy square edge cross chain and brackets
- Bolts to all Max-Emerge units
- Fits Kinze and White units with bolt-on wheels
- Kinze 2000, JD 7000 will need holes drilled for mounting

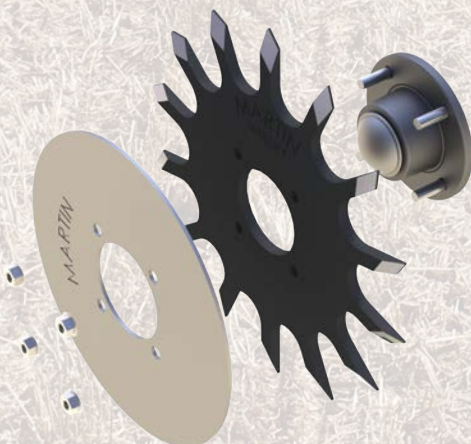
Following behind the Closing Wheels, our Twisted Drag Chain helps to further crumble and level the soil. This helps to even out the rate of drying and ensures the soil does not dry past seed depth.

This is a low cost, low maintenance way to help increase uniform emergence in the drier parts of the field and is a must when using the spading closing wheels in minimum till. By the way, some of our customers still feel the need for some shallow tillage in the spring and the spading closing wheels and drag chain combination do an excellent job in that situation.



Depth Blade (Filler Plate)

- Proven to eliminate wrapping when planting in green or standing cover crops
- Used on both Row Cleaner and Closing systems
- Provides Depth Control and Crimping Action
- 10.5" for 12.5" Razor or 13" Spike
- 12" for 15" Spike wheel



Works Great in Cover Crops!

MartinTill CCR Two Stage Closer



Shown with BSCW1444C.

Sold separately.

- Airbag adjusted down pressure.
- Camber adjust lever allows fine adjustment of toe in to fit your specific environmental needs.
- CCR Parallel link system follows ground contour.
- BSCW1444C Razor Teeth break side wall while cupped design SQUEEZES soil towards seed ensuring ideal seed to soil contact.



MartinTill 2nd Stage Closer

NEW!



***Patent Pending**

- 6"x12" Rubber press wheel seals and levels air pockets left in seed trench to ensure ideal seed to soil contact.
- Cam adjust allows adjustment of pressure applied by press wheel.
- Easily mounts to most Double V style OEM closing wheel brackets.
- BSCW1444C Razor Teeth break side wall while cupped design SQUEEZES soil towards seed ensuring good seed to soil contact.



Case IH Closing Wheels

BSCW8ZC 8" Cupped Razor Closing Wheels for 800, 900 & 1200 series

BSCW95ZC 9.5" Cupped Razor Closing Wheels for 2000 series

- Replaces closing disk on Case IH planters with offset closing wheel arm
- Fits Deere or Kinze shallow closing systems

Moist soil is moved toward the seed at seeding depth. In wet conditions, the soil is prevented from forming a continuous ribbon by the lifting action of the teeth as they rotate up out of the soil.



Benefits include:

- Closing wheel arm pressure can be greatly reduced
- Seeding depth does not have to be raised to ensure emergence
- Soil above the seed is loose, allowing quicker emergence in a compaction-free environment
- Sidewall compaction is eliminated



9.5" Cupped Razor Closing Wheels for CASE IH

We decided to make a change on our closing wheels. We are using the Martin Razor Wheel on our row cleaners and liked the performance. Martin has introduced a new closing wheel based on similar design but made it into a cupped style wheel, so we installed it on our corn planter. In this most difficult planting season, the 9.5" Martin Cupped Razor Wheel did an excellent job. It worked better than the factory style concave version for improving closing results. It crumbled the soil very nicely to close the furrow. I was very pleased!

Wes Leeper—Leeper Farms—Marysville, OH

BSCW899 9" Spading Closing Wheels



Case IH Closing Wheels CNH Camber Adjust Closing Kit For Case 2000 Row Unit



- Changes angle of Case standard stance to V style for better gathering action.
- Allows fine adjustment of toe in to fit your specific environment needs.
- BSCW95ZC Sharpened Teeth chip side wall while forcing soil towards seed to close furrow
- Updated Swing Arm with more clearance means less plugging



BSCW95ZC

Front view with full camber adjustment.



Grain Drill Closing Wheels

BSCW156D for 60 and 90 series

- 1/2" thick, 13" diameter with 20 rounded points crumbles side walls
- Can use 13" Spading Closing Wheels in place of 20 point Dimple in high moisture conditions



BSCW75D for 50 series

- PEER® SEEDXTREME™ 40 mm 5203 bearing with six-lip seal
- Double-threaded specially designed axle fits Deere 750 and 1850 drills



Closing Wheel angle changer for CNH Air Drills



Ajustable angle
changer for CNH
500T air drill.
0-11 degree
adjustments with
quick adjust knob

Stationary, bent,
7 degree angle
changer for CNH
P2000 air drill

MartinTill Weight Transfer System



Kit Includes:

- In-Cab Control Box with harness (Electronic PWM version)
- Bolt on brackets
- Grade 8 mounting hardware
- Industry standard durable hydraulic valve
- NOTE: Kit does not include custom hydraulic hoses or fittings
- Check fit up for Center Frame Mounted Fertilizer Tanks and Brackets for possible tank mounting bracket modifications needed

- In-Cab Control Box—Allows for easy adjustment as you plant
- Hydraulic control kit provides durable and quick adjustment
- Rugged Electronic PWM control box allows for fine tuning of industry standard hydraulic valve



WTS for 12 or 16 row JD1770/1775 (900083) or 24 Row (900244)

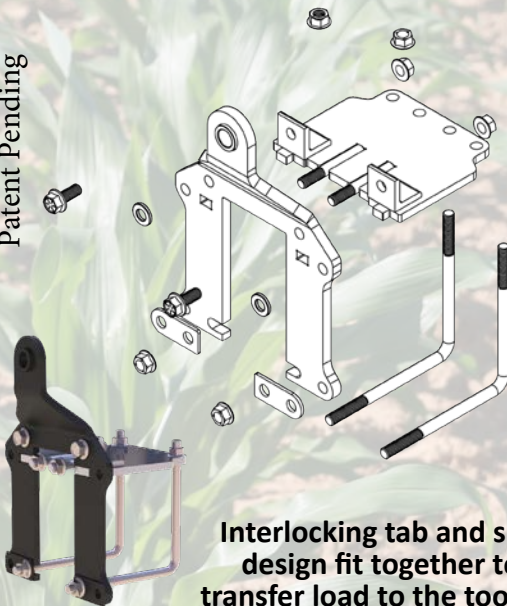


900083

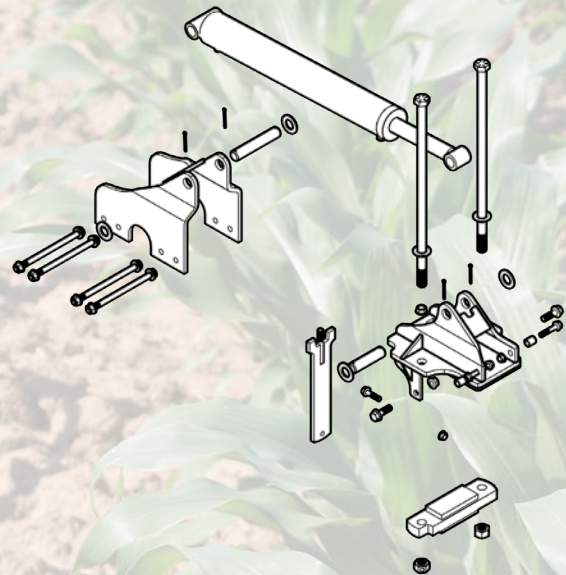


900244

Patent Pending



Interlocking tab and slot
design fit together to
transfer load to the toolbar

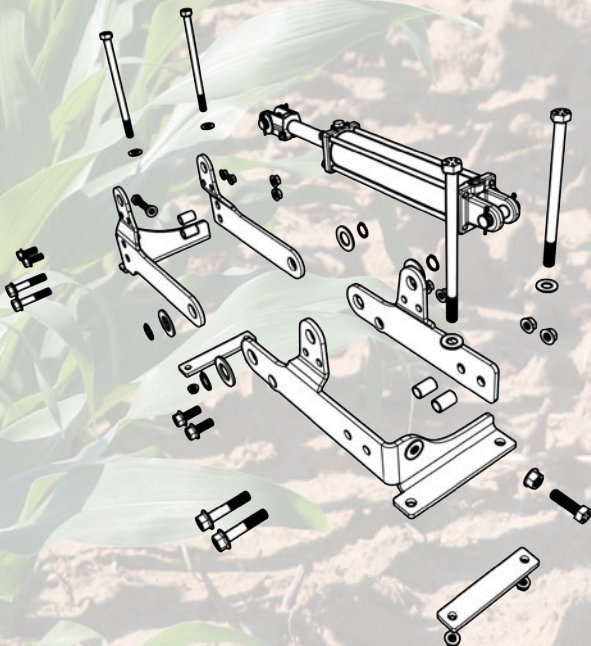


Can be used with frame
mounted openers

WTS for 16 row JD1790 (900079) or JD1795 (900072)



- **Bolt-On Bracket design (no welding) provides easy installation**
- **Combination of L bolts and row unit mounting bolts pulling in two directions ensure brackets stay put**



Martin-Till® Customer Testimonials



Spading Closing Wheels with Depth Blade (Cover Crops)

“One of the biggest challenges I face when planting into green living cover crops is to close the seed slot effectively. Martin-Till® has developed the Spading Closing Wheel with Depth Blade which closes the slot. I enjoy working with Martin-Till® because they see the future in cover cropping and no-till being important to the success of building soil health. That is refreshing to me. I can easily say that the Spading Closing Wheel with Depth Blade is the best closing wheel system I have used. I would recommend Martin-Till® products.”

Rick Clark – Clark Land & Cattle Williamsport, IN



Compact Clean Ride™ (CCR) Row Cleaner

“The CCR is very compact and fits nicely on my planter that we have done a lot of retrofitting on. The ride is very smooth, so it reduces “plowing” concerns in our contoured strip-till rows. We have a lot of variable conditions in our fields and this is a row cleaner that I can adjust “on the go” to remove residue. We adjust the row cleaners several times per day, sometimes multiple times per field. I also like the parallel linkage design.”

Bob Bowman – Bowman Farms • Strip-Tiller • DeWitt, IA



1360 Row Cleaner UMO Combo

We have used Martin row cleaners for over 7 years now and when we set up our new planter we chose Martin row cleaners again. We like the ability to intersect the wheels so that it tills a small area in the furrow strip. They also do a good job of moving stones and residue. We did not have any problems with the first set of row cleaners as they were extremely durable and well made. With the second set of row cleaners we installed the Martin UMO fertilizer disc couler to put fertilizer 2 inches from the furrow. It did an excellent job of keeping the fertilizer spaced a correct distance from the furrow. Our farm is pleased to run Martin-Till equipment and would recommend it to other farmers.

Robert Donald—Raymond Donald & Sons, LLC—Moravia, NY



Smart Clean™ and Row Cleaners

“The Smart Clean™ row cleaner air control adjustment system from Martin-Till® worked very well on our planter this year. I have a used planter and did a lot of upgrades to improve performance. I was interested in row cleaner control for my floating row cleaners. It was easy to install and the Bluetooth application on my smart tablet allowed me to control the system from the cab without needing to add another box and hoses into the cab. The air cylinder adjustment allowed me to safely and easily change the pressure on the row cleaners to improve consistency of cleaning residue. The ability to change the pressure of the row cleaner by lifting or pushing down greatly improves performance and cannot be duplicated by just changing a pin adjust. Frankly, I would not set up another planter without it.”

Jeff Bridgewater – Bridgewater Farms • Blainstown, Iowa

Martin-Till® Customer Testimonials



Smart Clean™

“With the difference in tillage practices, having on the go control over our row cleaners was a necessity. Using industry-leading technology, the Martin-Till® Smart Clean™ product enabled us to have total control from operators seat to really fine-tune one of the most important tools on our planter without adding more clutter to our tractor cabs.”

Brandon Hunt – Hunt Farms Farmer • Hopkinsville, KY



UMO Nitrogen Coulter – Row Cleaner - Smart Clean™

“This is my first year using Martin-Till® products. I was looking for the ability to apply liquid starter fertilizer when planting both corn and cotton, and be able to clean the row ahead of the fertilizer coulter. The UMO fertilizer coulter in combination with the Martin-Till® 1360 row cleaner is the solution I chose. I also chose it because it allows for different depth and placements setting. It allows me to expand to dual placement on both sides of the row in the future, which I am considering doing based on my results this season. I also had excellent results with the Smart Clean™ row cleaner control system. The MartinTill® products are very well designed and durable, and Martin Industries stands behind their product with excellent support and customer service.”

Paul Rogers – Rogers Farms • Avid Conservation Farmer • Wakefield, VA

NOTES:

Build your Row Cleaner at www.store.martintill.com



BD1360D

SCCYL2X2=cylinder

SCBD1360=Brackets

BD1360D

Example

- B= Bundle
- D= Deere 7200 and up
- 1360= 60 deg or 1345 at 45 deg
- D= Deluxe which includes Cam adjust and Side Treader Wheels
- Smart Clean Cylinder and mounting bracket must be ordered separately,
- SCCYL2X2= Air cylinder
- SC-BD1360= Adding SC to beginning of bundle number specifies cylinder mounting brackets



Add Z for Razor Wheel in place of Spike BD1360Z



BK41345Z Basic

K4= Kinze 4000

Z= Razor

1345=45 deg

Without Coulter

- D = Deere 7200 and up
- KW = Kinze 2000,3000, White and Harvest International Laser Pro 1
- K4 = Kinze 4000
- CIH =Case IH 1200
- H = Horsch

Fits OEM No Till Coulter

- DC = Deere 7200 and up
- KC = Kinze 2000,3000
- K4C= Kinze 4000



BDC1360 Basic

C=Coulter



The most trusted name in no-till™

Warranty

Martin Industries, LLC warrants its product to be free from defects in materials and in workmanship for one full year from date of sale to the original user.

- The warranty is valid if Martin Industries LLC is notified of the defective part within 30 days.
- Martin Industries, LLC has the option to either repair or replace any parts that were determined to be defective due to material or workmanship.
- Any improper use, including operation after discovery of defective or worn parts, operation beyond rated capacity, or substitution of parts not approved by Martin Industries, LLC. shall void this warranty.
- No dealer, employee, or representative is authorized to change this warranty in any way or grant any other warranty unless such change is in writing and signed by an officer of Martin Industries, LLC at its home office.
- Martin Industries LLC will not replace row units or other manufactures parts that may be damaged during use.





Martin-Till[®]

Est 1991

206 Elk Fork Road • Elkton, KY 42220
Phone: 800-366-5817 • Fax: 270-265-9896
www.martintill.com
www.store.martintill.com
sales@martintill.com

V071320



ISO 9001:2015
Certified

**ISO 9001
CERTIFIED COMPANY**

 **PRI Registrar**
PERFORMANCE REVIEW INSTITUTE