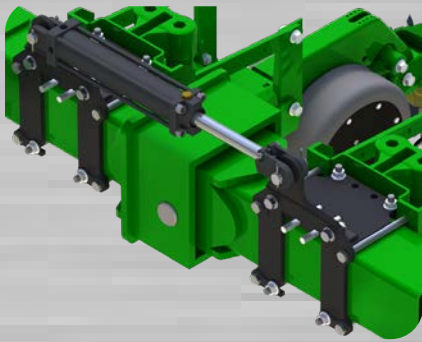


Martin-Till®

WELCOME TO THE MARTIN-TILL® PLANTING SYSTEM





A Letter From Our Founder

Thank you for considering our products. We feel honored to be able to serve your needs. As farmers ourselves, we know the frustration that unforeseen obstacles can bring, especially inclement weather. While we can't do anything about untimely rains, we can help equip your planter to allow for more time spent planting and less time waiting to get seed in the ground.

Our customers believe that Martin-Till® products provide an excellent return on their investment. We know this because a large percentage of them are repeat customers. Our planter attachments help make it possible to plant into higher levels of residue and moisture. Higher levels of mulch means less erosion, improved soil tilth and fertility, which can reduce production costs. Our goal is to increase yields and save you time and money. We hope you find something in our catalog that will make this year's planting go better for you. After all, you deserve the best!

Howard Martin





Planting system.....	4-5
Hub and Bearing Assemblies.....	6
Wheels Selection.....	7
Floating Row Cleaner Options and Versions.....	8-9
Floating Row Cleaners for Coulters.....	10
Parallel Link Floating Row Cleaners.....	11
Narrow Floating Row Cleaners.....	12
Floating Row Cleaners without Coulters.....	13
SmartClean Row Cleaner Adjustment system.....	14-16
Unit-Mounted Fertilizer Openers.....	17
Combination Floating Row Cleaners and Fertilizer Openers.....	18-19
NEW Walker Frame Mounted Row Cleaner.....	20-22
Rigid Mounted Pin Adjust Row Cleaners and Mounting Brackets.....	23-24
Closing Wheels & Options.....	25-27
<i>fCrusher</i> Closing Wheel.....	28
Second Stage Closer.....	29
<i>fCrumbler</i> for Second Stage Closer.....	30
Case IH Closing Wheels & V-Style Closing Kit Update.....	31-32
Grain Drill Closing Wheels.....	33
Weight Transfer System.....	34-35
How to order.....	36
Warranty.....	37



**ISOBUS
Compatible!**
pg.14-16



Opening Systems

Residue clearing wheels and side treader wheels clean crop residue, dirt clods and other obstacles from the row in order to improve:

- Furrow cleaning, for improved seed-to-soil contact
- Planter row unit ride, for less bounce and twisting of unit
- Ease of disc v-opener cutting by lightly tilling the seed furrow
- Consistency of emergence by allowing soil to warm up sooner

Smart Clean™

Row Cleaner Adjustment System

The exclusive Martin-Till® Smart Clean™ Row Cleaner Adjustment System provides an easy-to-use mobile or ISOBUS app to allow the operator to raise and lower floating row units on the go by varying the amount of air pressure in the cylinders. Benefits include:

- Enhanced row unit ride
- Improved ability to properly clean the soil ahead of seed furrow to reduce residue in furrow
- Wireless control allows for less equipment in the cab
- 1 psi increments allow for more precise row cleaner control
- Eliminates dangerous, time-consuming manual row cleaner adjustments
- Ability to lift up to reduce furrowing in loose soil or push down in heavy residue at the press of a button

Unit-Mounted Fertilizer Openers

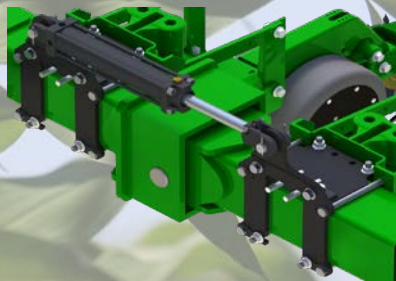
Mounted rigidly to the row units, Martin-Till® Unit-Mounted Fertilizer Openers (UMOs) follow the row unit over undulating terrain to place crop nutrients at seed depth either one, two or three inches from the seed furrow. Features and benefits include:

- Integrated design with row cleaner at front of row unit
- Low- to high-volume rate options
- Single or dual placement. Dual UMOs allow for yield-enhancing 2 X 3 x 2 fertilizer application
- Place nitrogen and fertilizer below soil surface to reduce off-site movement
- Increase nutrient use efficiency, early-season vigor and yields





Shown on 16 Row
JD1770



Weight Transfer System

Introducing an Innovative Weight Transfer System developed by Martin Industries to assist with re-distributing weight from center of planter to wings. Compaction reduces plant vigor and yield. Shallow or inconsistent planting due to poor control of planter wings also robs yield. Most planters have a “weight problem”. Excess weight in the center of the planter or improper weight distribution is a constant concern.

- In-Cab Control Box—Allows for easy adjustment as you plant
- Kits available for 12 and 16 Row JD 1770/1775, 1790/1795 & 24 Row JD 1770.
- Bolt-On Bracket design (no welding) provides easy installation
- Interlocking tab and slot design fit together to transfer load to the tool bar

CNH V-Style closing system
update.
pg.32



Shown with
BSCW1444C.
Sold separately.

Closing Systems

Often overlooked, proper row closing is a key component of a profitable planting program. Martin-Till® Spading Closing wheels and twisted drag chains help you seal the row for more consistent germination and emergence.

- Close the seed furrow slot without compacting the soil surface
- Reduce infiltration of light, water, air, or chemicals into seed germination zone
- Fracture sidewall compaction to improve root development
- Improve closing action in difficult cover crop situations by adding filler plates

Second Stage Closing
system. Fits most OEM closing
wheel arms.

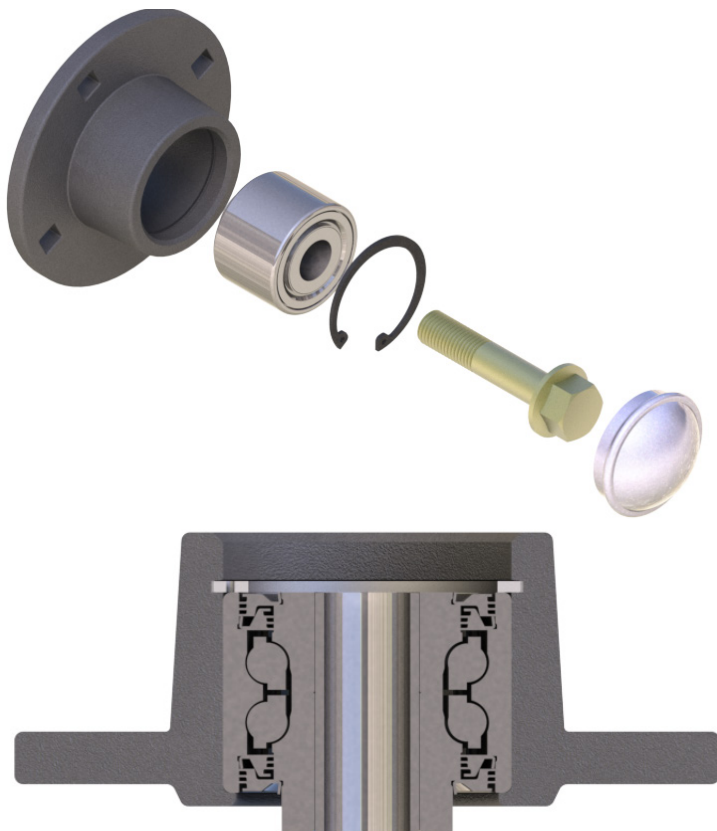
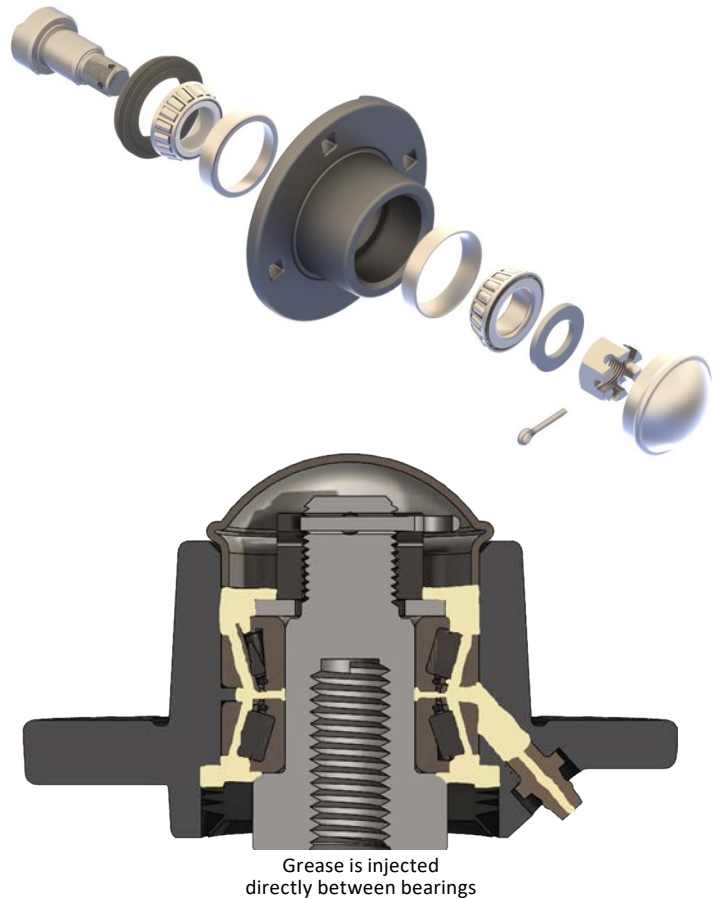
pg.29

Hub & Bearing Assemblies

HA44270D Greaseable Tapered Roller Bearing with 3 lip seal

All Row Cleaners except 1345 use our HA44270D hub, featuring double tapered roller bearings with a triple lip seal designed to be flushed out with grease. No need to worry about over greasing this hub we recommend greasing it annually until grease comes out to flush out contaminants.

Customers often tell us they have planted with their Martin-Till® Row Cleaners for many, many years without needing to change the bearings. Cost savings over time and less in-field or shop labor maintenance are two important reasons farmers respect and choose Martin-Till® again and again.



CHU44C

Double Row Ball Bearing with 6 lip seal for 1345 Row Cleaners

- Heavy duty 5205 double row ball bearing
- Maintenance free bearing features a six-lip seal design allows the life of the bearing to be increased over typical two- and three-lip designs, while removing the need for routine maintenance
- Seal design features improved contamination exclusion while maintaining standard envelope dimensions



Choice of Spike or Razor Wheel

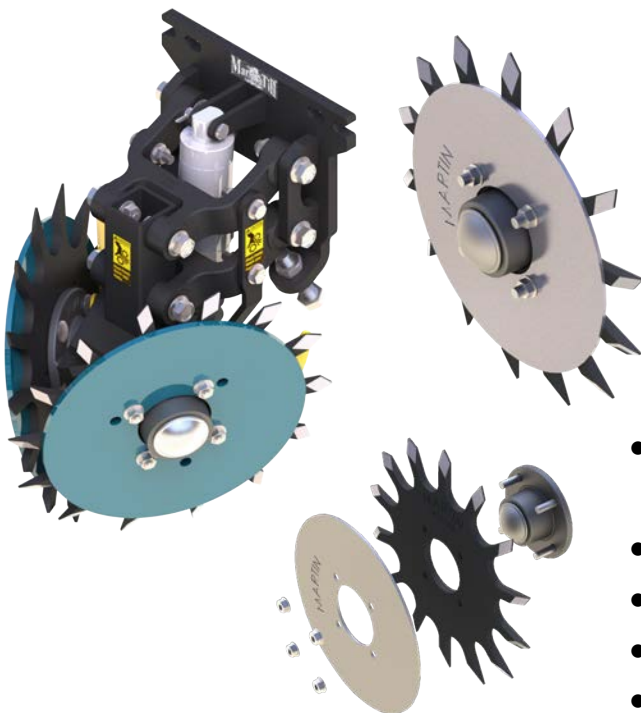


The 13" **Spike** wheel with 14 teeth moves the least amount of soil. The larger soil window between the teeth allows residue to be moved without moving vital soil away from the row center. The spike teeth intersect lightly till the seed zone. It comes in lefts and rights and is from 3/8" thick Boron Steel heat treated for extended long life. The Spike wheel combined with provided internal deflectors (scrapers) performs well in green material.



The 12.5" **Razor** wheel with 12 teeth performs excellently in cover crops. It will not move as much soil as competitive products but slightly more than a spike wheel. The angled teeth drop material as the wheel exits the ground preventing wrapping and when combined with our internal deflector it remains wrap free even in standing cover crops. It comes in lefts and rights with full bevel on one side vs competitive products with some bevel on both sides causing theirs to wear blunt much faster. The Razor wheel is made from 1/4" T-1 then heat treated a second time for extended long life.

Add "Z" to end of part numbers to specify Razor Wheel
example: BD1360Z



Depth Blade (Filler Plate)

- Proven to eliminate wrapping when planting in green or standing cover crops
- Used on both Row Cleaner and Closing systems
- Provides Depth Control and Crimping Action
- 10.5" for 12.5" Razor or 13" Spike
- 12" for 15" Spike wheel

Floating Row Cleaner Options

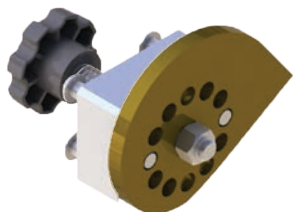


Side Treader Wheels

STW04A 3 and 4 bolt hubs

STW01K Kinze 6 bolt hub

A key component for successful planting, aluminum side treader wheels are purchased on over 95% of floating row cleaners and are designed to reduce trenching in soft soils. They also provide traction to help keep the row cleaners turning in loosely worked ground.



Cam Quick Adjust

CA03D 1360

CA03K 1360 for Kinze Coulter

CA45 1345

Cam adjusters are available for WA1360 and WA1345 row cleaners. They speed up the process of changing the working depth of the row cleaner frames. They are especially beneficial for growers who frequently switch from no-till to conventional tillage and do not have air cylinders.



Cylinder and Brackets

- Precision Planting CleanSweep Cylinders
- SmartClean & CleanSweep compatible cylinder brackets from Precision Planting & MartinTill



D-Lock Deflector (Scraper)

DLD02L or DLD02R

For use is viney residue, prevents wrapping

Deflector installed

No Deflector

Internal Deflectors come standard with all row cleaners.

Floating Row Cleaner Styles

ACCR1345 Narrow



ACCR1360 Wide



1360

**Shown with optional
Cam Adjust & Side Treader Wheels**



1345

ACCR1360 Wide or ACCR1345 Narrow Compact Clean Ride™

- ACCR1360 Measures less than 14" from the face plate uses HA44270D Heavy Duty Greaseable Tapered Roller Bearing Hub with 3 lip seal
- ACCR1345 Measures less than 16" from the face plate uses CHU44C cast hubs and long life 5205 double row bearing with 6 lip seal
- Over 4" of vertical travel
- Allows for fitting on planters with front frame mounted nitrogen coulters or where full-size row cleaners can't be used due to planter folding/unfolding issues
- Parallel linkage allows for easy floating action, especially when paired with Martin-Till® Smart Clean™ or Precision Planting® Clean Sweep® cylinders
- Factory pre-assembled chassis saves time and makes it a cinch to install
- Choice of Spike or Razor wheel can be installed intersected or offset
- HA44270D Heavy Duty Greaseable Tapered Roller Bearing Hub with 3 lip seal

1360 Floating Row Cleaner

- 60 degree heavy-duty frame
- Choice of Spike or Razor wheel can be installed intersected or offset
- HA44270D Heavy Duty Greaseable Tapered Roller Bearing Hub with 3 lip seal
- Patent No. 8,631,879, D601,593 and others pending

1345 Floating Row Cleaner

- 45 degree heavy duty frame for narrow rows and high speed planting
- Choice of Spike or Razor wheel can be installed intersected or offset
- CHU44C cast hubs and long life 5205 double row bearing with 6 lip seal
- Smart Clean and Cam adjust compatible

Floating Row Cleaner For Coulters

Basic with no options



Shown with optional
Razor Wheels, Side
Treader Wheels,
Cylinder & brackets



BDC1360

- Attaches to JD 7200 (and later) series planters with a John Deere unit mounted no-till coulters. It will also install behind the John Deere single disc fertilizer opener (with extended parallel arms)
- Measures 22" from planter face plate to front of row cleaner wheels
- Choice of Spike or Razor wheel can be installed offset or intersected
- HA44270D Heavy Duty Greaseable Tapered Roller Bearing Hub with 3 lip seal
- 6" Row unit set back kits available (USB72)

BKC1360 Kinze 2000, 3000

BK4C1360 Kinze 4000

- Attaches to Kinze planters with a unit mounted no-till coulters
- Measures 22" from planter face plate to front of row cleaner wheels. 6" Row unit set back kits available (USB70)
- Choice of Spike or Razor wheel can be installed offset or intersected
- HA44270D Heavy Duty Greaseable Tapered Roller Bearing Hub with 3 lip seal

C125R The original Floating Row Cleaner

- Can be combined with most unit mounted coulters
- Choice of Spike or Razor wheel can be installed offset or intersected
- HA44270D Heavy Duty Greaseable Tapered Roller Bearing Hub with 3 lip seal
- Not recommended on JD 1700 series. Contact your Martin sales rep for compatibility



Basic with no options

ACCR1360 Wide / ACCR1345 Narrow

Compact Clean Ride (CCR) Parallel Link Row Cleaner



ACCR1360 Wide



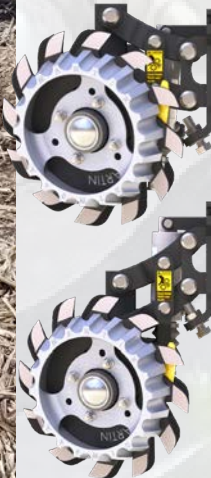
ACCR1345 Narrow

CCR™ improves planter performance with innovative cast parallel linkage design.

- Compact Design
- ACCR1360 has the same stance as our BD1360. Measures less than 14" from the face plate uses HA44270D Heavy duty greaseable tapered roller bearing hub with 3 lip seal
- ACCR1345 Perfect for high speed or narrow rows Measures less than 16" from the face plate uses CHU44C cast hubs and maintenance free long life 5205 double row bearing with 6 lip seal
- Parallel Linkage provides over 4" travel while maintaining a consistent wheel stance when riding over uneven ground
- Compatible with Precision Planting® Conceal® as well as other frame mounted openers
- Integrated Vertical Air Cylinder brackets for Clean Sweep® or Smart Clean™ cylinders purchased separately
- Chassis is assembled at factory for easier installation onto planter row unit
- Ductile cast linkages run on heavy duty hardened oil impregnated bushings
- Choice of Spike or Razor wheels can be set up so wheels offset or intersect. Intersecting Razor wheels tear thru cover crops in seed zone
- Available for most other row units including Case-IH 1200 series, Great Plains and more



Photo Credit:
@HawkHillFarms
Follow on Twitter



Depth Blade (Filler Plate)

- Proven to eliminate wrapping when planting in green or standing cover crops
- Used on both Row Cleaner and Closing systems
- Provides Depth Control and Crimping Action
- 10.5" for 12.5" Razor or 13" Spike
- 12" for 15" Spike wheel



1345 Narrow Floating Row Cleaner

For use without Coulters

As planters get faster and row width narrower a less aggressive row cleaner is needed. Our 1345 answers this call due to:

- Narrow 45 degree frame, ideal for high speed planting or narrow rows while still clearing path for gauge wheels
- Durable CHU44C Hub with long life 6 lip double row 5205 bearing, see hub page for details
- Choice of Spike or Razor wheel can be set up so wheels offset or intersect. Intersecting Razor wheels tear thru cover crops



BA1345D**

BA1345DZ*



BA1345 John Deere 7200 (and later), Case-IH 2000 with CNH heavy duty adapter, Kinze 2000, 3000 & 4000, White 6000, 8000 and 9000 and Harvest International Laser Pro 1

BCIH1345

Case IH 1200 series planters without frame mounted no till coulters.



1345 Row Cleaner

"Moving into faster planting speeds with newer planter technology, our needs from our row cleaners changed. The Martin-Till® 1345 row cleaner gave us the ability to increase our planter speed while still managing our residue without disrupting the ride of our row units, while still maintaining the superior performance that we have come to expect from Martin Industries."

Brandon Hunt – Hunt Farms

Farmer & Tractor Pulling Professional • Hopkinsville, KY

* Shown with Razor Wheels, Side Treader Wheels, Cam adjust and air cylinder with mounting brackets

**Shown with Spike Wheels, Side Treader Wheels, Cam adjust and air cylinder and mounting brackets

1360 Floating Row Cleaner

For use without Coulters

BA1360 Basic
w/o options



BA1360 Deluxe
Options:
Side Treader Wheels
Cam adjust
Smart Clean Cylinder
and Brackets

BA1360 John Deere 7200 (and later), Case-IH 2000 with CNH heavy duty adapter, Kinze 2000, 3000 & 4000, White 6000, 8000 and 9000 and Harvest International Laser Pro 1 without no-till coulters. 1360 measures 19" from planter face plate to front of row cleaner wheels.

BCIH1360

Case IH 1200 series planters without frame mounted no till coulters.

All row cleaners are shown with various options, including side treader wheels, cam adjuster, Smart Clean™ system and Razor Wheels.

** If equipping the rear units of a John Deere 1790 with 1360 row cleaners, long parallel arms all the way across the rear units are strongly encouraged, especially when operating in heavy residue.

*** If installing row cleaners on Kinze Twinline planters with no-till coulters, unit set back kits will be required behind the transport wheels on the rear units. Unit set-back kits (USB70) are available from Martin-Till®. If installing row cleaners on White planters, make sure there is enough clearance between the top of the 1360 frame and the bottom of the planter drive shaft. Some planters may have interference problems when the row cleaners raise up on uneven ground.

**** Please note the BCIH1360 will not fit on Case planters that have the hexagonal drive shaft under the parallel arms. (There is not enough upward clearance above the BCIH1360 and below the parallel arms to allow the frame to float sufficiently.)



On our farm we use the 1360 row cleaner on 2 Kinze planters. We have been using them for more than 5 years and they have required little to no maintenance. Also, our customers really like the Martin row cleaners. The durability and dependability of the Martin row cleaners allow us to recommend them with confidence.

Aaron Wolf—Farmer & Precision Ag/Equipment
Sales—Wolf Farms Precision—Dixon, Illinois



By Martin

Row Cleaner Air Adjust System

*It's easy to add Smart Clean to any planter or strip till bar
For optimized Row Cleaner control at your finger tips!*



**WIFI
CONNECTION**



**ISOBUS
Compatible**

- Electronic Proportional Control valves automatically adjust to maintain desired psi
- Can be set in 1% (lbs.) increments
- App runs in background on your Smart Phone or Tablet
- UPDATED WIFI signal allows control of row cleaners while riding alongside or behind planter.
- System defaults back to last settings when power is cycled or connection is lost
- No bulky boxes or air lines in cab
- Bi-Directional control option allows for pressurizing both sides of cylinder at same time (Dual Valve only)



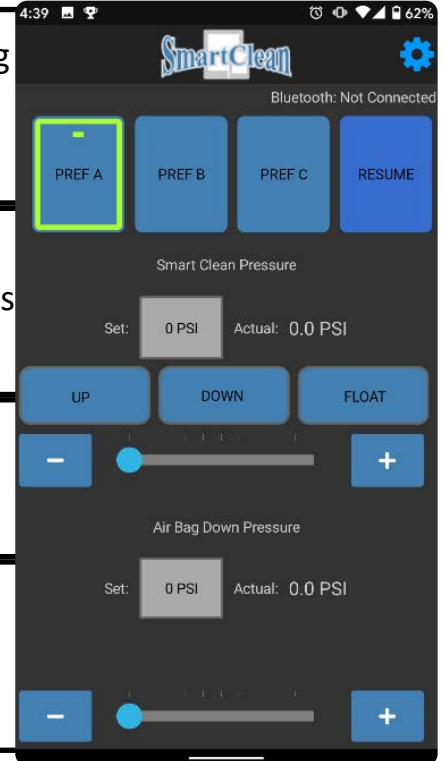
The Smart Clean™ System makes manual row cleaner adjustments a thing of the past use your smart phone or tablet to raise lower your row cleaners.

900180 - Single Valve Bank (Air Bag) - Row Cleaner Adjust and Air Bag Control - One directional control valve works same as single valve plus you can set psi on a second circuit to control air bags.

900181 - Bi-directional - Uses two valves allowing you to set separate air psi on both sides of piston. This method gives best control and does not come with a directional control valve.

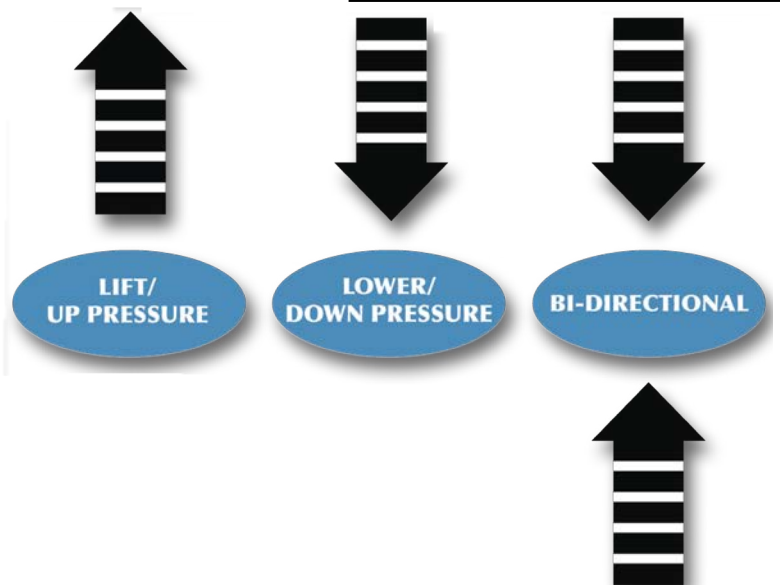
900182 - Single Valve Bank (No Air Bag) - Row Cleaner Adjust Only - One directional control valve lets you set psi then select up down or float.

900183 - Dual Valve Bank - Independant Section Control - Two directional control valves allows section control for left right or front gang back gang.



800887 Smart Clean manual Bi Directional control

Isobus & WiFi connection options available for control





800535 SC-ISO ISOBUS harness extension
JD 2021 & earlier Planters equipped w/ ISOBUS

800908 SC-ISO ISOBUS harness extension
JD 2022 & later Planters equipped w/ ISOBUS

800621 ISO ADAPTER CABLE Fits **ANY** tractor w/ ISOBUS. Requires 800612

800612 SmartClean ISOBUS cable extension, 40 Ft
For use with 800621

High-Flow 200 PSI Air Source Kits

- 480C VIAIR compressor mounted on a 2.0 gallon air tank
- Pre-wired 165/200 PSI pressure switch.
- 1/2-inch port compression fitting for 3/8" (I.D.) air line pre-installed
- Heavy Duty harness with 40-amp relay and an appropriately-rated fuse



JD Update High-Flow Compressor

- Replaces factory JD compressor
- Comes complete with mounting brackets and deutch connector to connect directly to JD harness. Uses JD pressure switch
- Low amp-draw 480C VIAIR compressor mounted 2 gallon air tank
- 1/2-inch port compression fitting for 3/8" (I.D.) air line pre-installed



Unit-Mounted Fertilizer Opener (UMO150)

Consistently places fertilizer in the ground without splattering on planter!

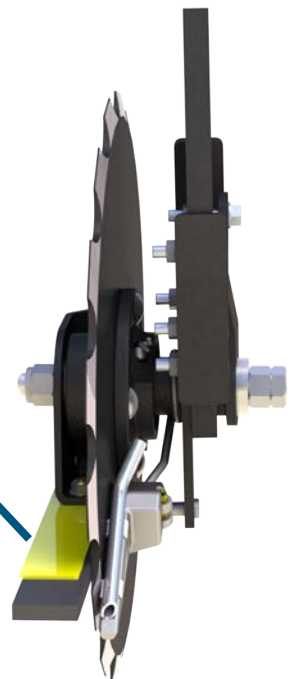
UMO150 Features

- **Sturdy, compact design** allows more ground clearance with a more narrow profile, reducing bulldozing.
- Greaseable Double tapered bearing hub with two 3 lip seals
- 5mm thick (0.197") 14" blade or 15" notched blade. Standard 14" smooth blade for use in no-till conditions or a **15" notched blade** for use in min-till or conventional till .
- Updated & improved placement shoe for less friction
- Adjustable furrow control strap
- Mounting directly to the row unit allows precise placement from the seed, even when planting on contours.
- Can be set to place liquids 1", 2", or 3" from seed row
- Can also be set to place liquids 3/4" above or even with seed depth
- 1 1/2" OD Dry tube available for 2" and 3" lateral spacing
- Fits Deere 7000 - 1700, Kinze, White 6000/8000/9000 series, Harvest International Laser Pro and Case IH 1200 and 2000 series planters
- Patent Number 7,481,171



Patented
spring loaded knife places liquid in
the ground not on the planter!

Adjustable Furrow
Control Strap
keeps soil in place.
Preventing blowout
of Furrow Wall.



Floating Row Cleaner & Fertilizer Opener Combo

BAUMO1345

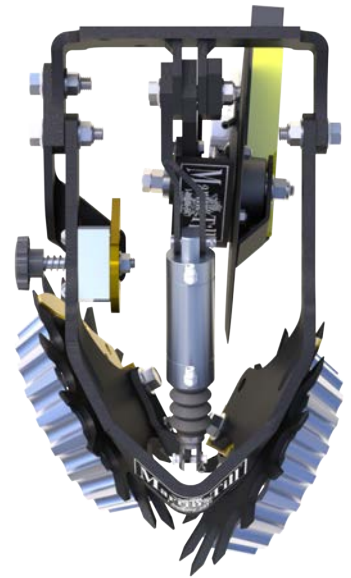


Shown as Basic, without options.

BAUMO1345



BAUMO1360



Shown with optional Cam,
Side Treader Wheels and Air
Cylinder

BAUMO1360*,BAUMO1345*

1360 and 1345 floating row cleaners with UMO150 combination. Universal mount designed to install on all John Deere planter units, Kinze 2000, 3000 & 4000 series, White 6000, 8000 & 9000 and Harvest International Laser Pro 1. Can be used on Case IH 2000 with heavy duty adapter plate (Case IH PN 4805-4385 or Martin PN MTCNHD). BAUMO1360 measures 25" from face plate to front of row cleaner assembly.

BCIHUMO1360, BCIHUMO1345

1360 and 1345 floating row cleaners with UMO150 combination. Designed to install on Case IH 1200 and 2000 series planter units without frame mounted no-till coulters. Case 1200 series requires heavy duty lower parallel arms. Will not work if drive shaft is under planter frame.



BAUMO1360

Dual UMO150

Compatible with 1360 & 1345 Row Cleaners

Features

- Dual UMOs allow for yield-enhancing 2 x 3 x 2 fertilizer application
- Your choice of Two, 14" smooth blades or 15" notched blades.
- Greaseable tapered roller bearings and 2 triple lip seals for durability
- Updated spring and placement shoe reduces friction on blade keeps blade turning in loose ground
- 3/8" O.D. delivery tube for maximum placement (up to 45 gallons per acre per opener)
- Furrow control strap reduces furrow blow-out while minimizing erosion and fertilizer spattering
- Places nutrients at various depths 3" on BOTH sides of seed for maximum usage
- Available with optional dry fertilizer tubes

Agronomic Benefits

- Allows more nutrients to be applied
- Increases root mass
- Enhances plant size and strength
- Promotes faster growth
- Improves yields

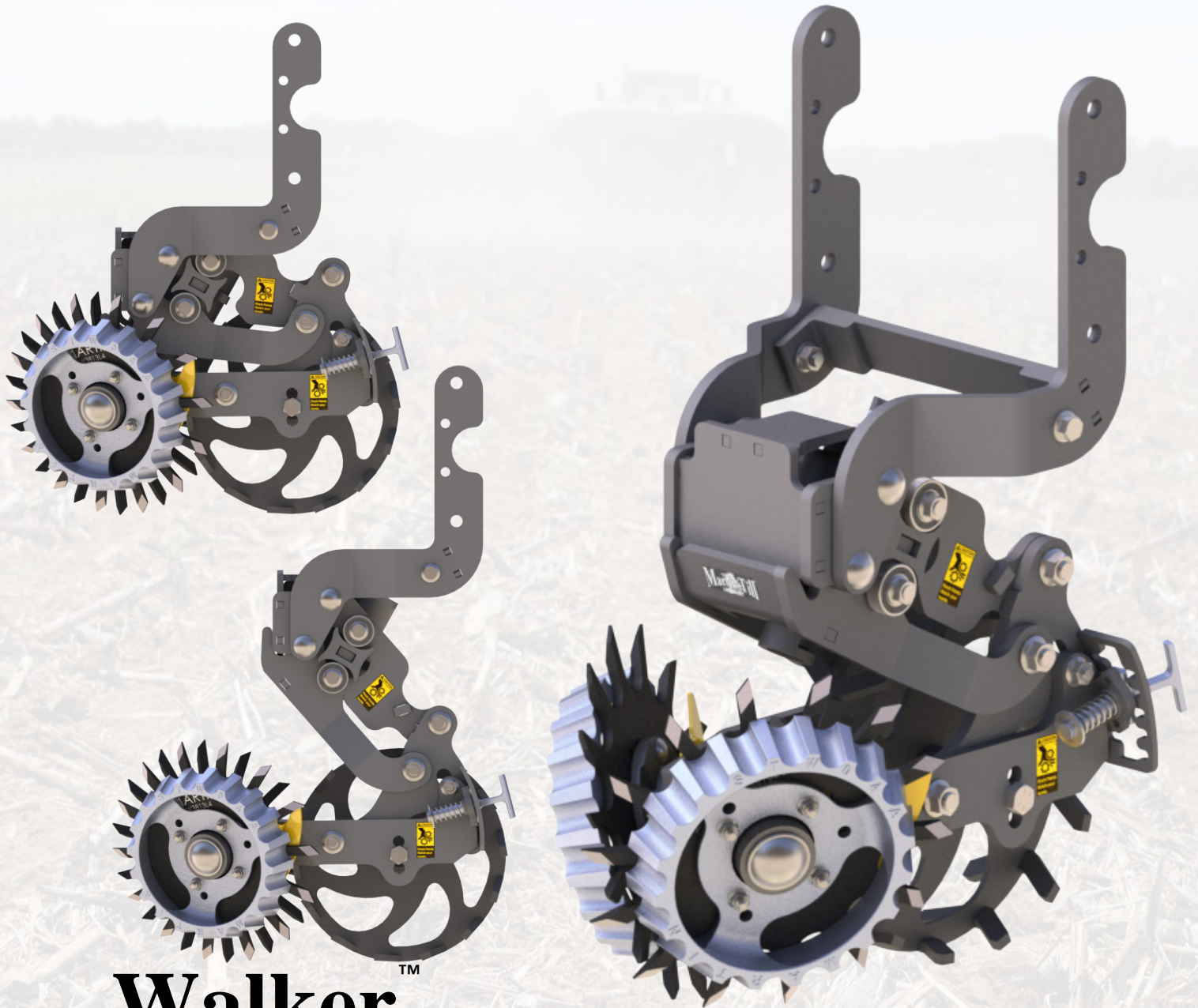


TESTING LOCATIONS	STARTER PLACEMENT SYSTEM	TREATMENTS	PLACEMENT	EMERGED POPULATION	POPULATION DIFFERENCE	NEPS %	BU./A.	BU./A. DIFFERENCE	RETURN ON INVESTMENT
IN, OH, IA	MARTIN-TILL® DUAL UMO 2x2x2	Control: 30 units UAN	2x2	32,088	-	83.6	201.4	-	-
		30 Units UAN	2x2x2	32,454	+366	82.9	207.5	+6.1	+23.55
		60 Units UAN	2x2x2	32,023	-65	83.3	211.3	+9.9	+25.01
		30 Units UAN + 1 qt Start Right	2x2	31,760	328	80.7	206.6	+5.2	+9.57
		30 Units UAN + 1 qt Start Right	2x2x2	31,773	-315	82.7	202.6	+1.2	-5.87
KY, CIL, SIL	YETTER DUAL 2968 SERIES	Control: 30 units UAN	2x2	31,246	-	92.8	199.0	-	-
		30 Units UAN	2x2x2	30,407	-839	91.7	204.6	+5.6	+21.62
		60 UNITS UAN	2x2x2	30,245	-1,001	90.7	208.5	+9.5	+23.47
		30 Units UAN + 1 qt Start Right	2x2	30,458	-788	91.0	204.0	+5.0	+8.8
		30 Units UAN + 1 qt Start Right	2x2x2	30,750	-496	91.9	202.7	+3.7	+3.78

Corn \$3.86/Bu. Start Right \$42.00/gal. UAN \$.044/unit of nitrogen. Individual results may vary.

Walking Tandem Frame Mounted Row Cleaner

Precision, Durability, and Innovation



WalkerTM

The Walking Frame Mounted row cleaner brings ground breaking, cutting edge technology and the legendary durability you expect from Martin-Till

Walking Tandem Frame Mounted Row Cleaner

- **Smart Clean Bi-Directional Control**

Take full control from the cab with the Smart Clean Bi-Directional control system. This intuitive feature allows for real-time adjustments, ensuring peak performance in any field condition.



- **Depth Gauging Basket (fCrumbler)**

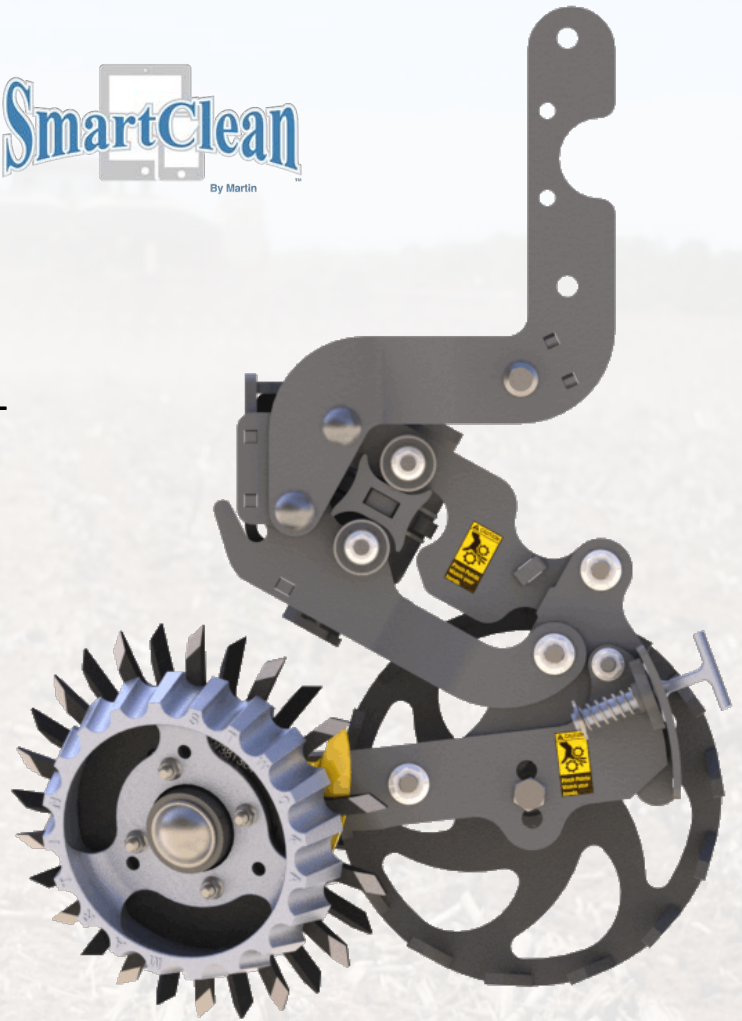
Using our fCrumbler as a depth gauging basket, the soil is firmed without smearing or mud build-up, creating a clean seedbed that enhances soil consistency and improves seed-to-soil contact.

- **Heavy-Duty Oversized Pivot Bushings**

Our oversized pivot bushings are engineered for maximum durability, ensuring a longer operational life and robust performance while minimizing maintenance needs.

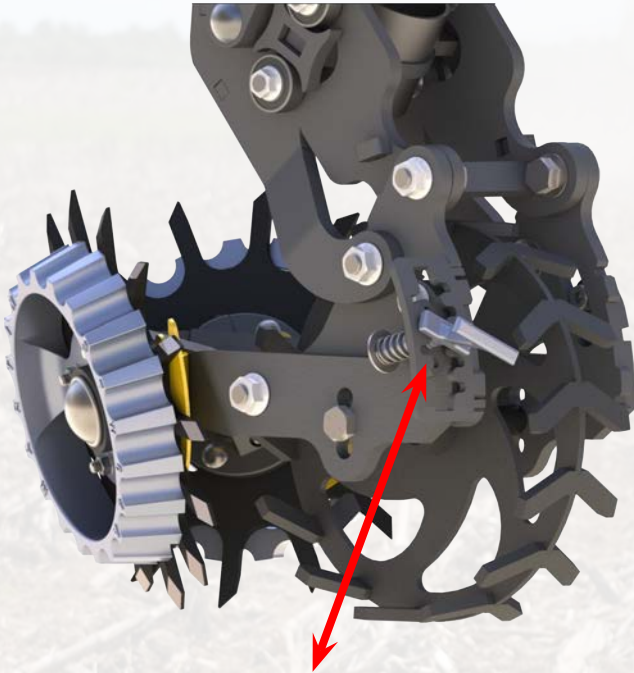
- **Legendary Heavy-Duty Hubs and Wheels**

Experience the strength of Martin-Till's renowned heavy-duty hubs and wheels, designed for long-lasting durability and reliable performance in the toughest conditions.

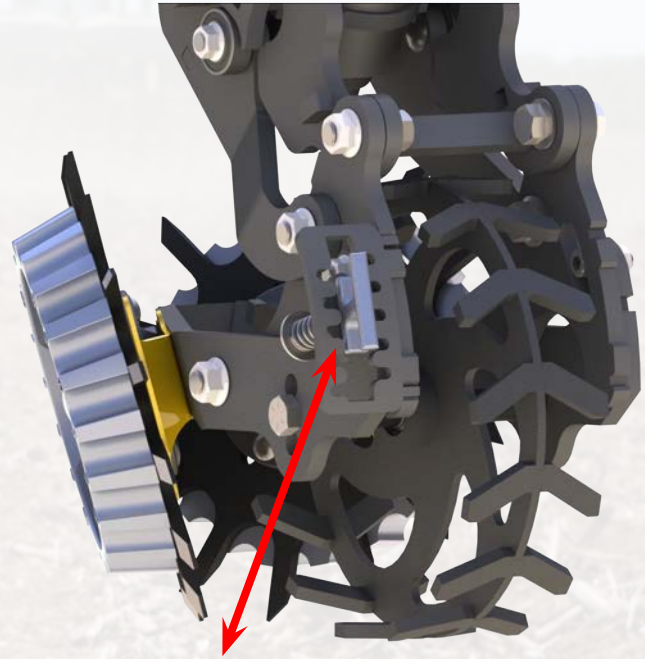


Walking Tandem Frame Mounted Row Cleaner

Tandem Setting:



Adjust T-handle to engage “lock in” depth settings. Adjustments in 5/16” increments



Turn T-handle 90 degrees (unengaged) to allow Walking Tandem

- **Walking Tandem Frame-Mounted Design**

Enjoy superior stability and adaptability with our walking tandem frame, designed to deliver consistent row cleaning performance across diverse terrains.

- **Tandem Operation for Enhanced Depth Control**

Synchronize the row cleaner wheels and rear gauge wheel to operate in tandem, preventing the row cleaner from digging in on inclines and being held out of the ground on declines. This feature ensures consistent depth control and precise planting.

- **Dual Air Bags: The Next Generation of Force Adjustment**

Our advanced dual air bag system outlasts traditional cylinders many times over, providing unmatched durability and precision in up and down force adjustments. Experience effortless adaptability to varying soil conditions with a system built for long-term reliability.

- **Effortless Depth Control with Spring-Loaded T Handle**

Maintain the perfect planting depth with ease. Our spring-loaded T handle provides quick, incremental adjustments for straightforward and efficient depth management.

Pin Adjust/Rigid Row Cleaners

Right: B1332/772
Below: B1532/772
Both shown with
MT772



Patent #5,507,351

B1334/892
Shown with
MT892



B1320/772
Shown with
MT772

Intersecting teeth reach the entire row middle and aid in cleaning one another. It's this patented cleaning action that spawned the Martin-Till® brand name, a name synonymous with superior performance in no-till and minimum-till planting.

Can be set offset or intersecting with your choice of 13" or 15" or 12.5" Razor Wheels.

WA1532 or WA1332

- Rigidly mounted directly to planter unit face plate
- Easily adjustable in 1/4" increments with lift assist handle and spring
- Movable axles, via the exclusive Martin-Till® D-Lock System, allow for several mounting positions (intersect, offset, retracted)
- 13" toothed steel wheels with diamond shaped points allow plenty of upward adjustment in loosely worked soils
- 15" version allows teeth to extend past edge of gauge wheel works great on ridges

WA1334

- Specifically designed for Case IH Early-Riser planters (For use with all pin adjust brackets which accept 2" stems)

WA1320N

The Martin-Till® Narrow Row Cleaner Model WA1320N is designed to clean residue from the vital seed trench area with less total disturbance than regular models. Two wheels are used to ensure residue is removed from the row center and not just dragged across the row, which may occur with single wheel models.

This model is recommended for 20" planters that have all units on one bar, operating in moderate residue. Because the cleaning teeth reach their maximum depth nearer the row than other models, the seed trench is more easily opened and the trench walls are more likely to crumble. The planter path will retain more moisture where this model is used than where the regular width cleaners are operated.

Pin Adjust/Rigid Row Cleaners

Mounting Brackets



MT772

Attaches to Kinze, Harvest International Laser Pro, John Deere, White 6000 & 9000 series. Accepts 1-1/2" wheel assembly.



MT810

Attaches to White 8000 Series planters. Accepts 1-1/2" wheel assembly.



MT610

Attaches to White 6000 Series planters with heavy duty down pressure springs. Accepts 1-1/2" wheel assembly.



MT1250

Attaches to Case IH 1200, 1250, 1300, and 2000 series planters for 2" tube wheel assemblies. Will not work with pneumatic down force systems.



MT892

Attaches to Case IH 800 and 900 series planters. For 2" tube wheel assemblies. (Additional mounting kit required for early 800 series planters).



MT512

Attaches to White 5000 Series planters. Bolts directly to planter, using existing holes. Accepts 1-1/2" wheel assembly.

Closing Wheels Dual 13" Spading



BSCW1344 -

- For planters with bolt-on hubs: Deere 1700 series, Kinze late 2000 and up, White 6000 & 8000
- 3/8" thick, 13" diameter right and left toothed steel wheels with diamond shaped points
- CHU44B2 cast hubs and long life 40mm 5203 bearing with six-lip seal

BSCW1343 - For Deere 7200-7300 series

BSCW1341 - For planters with roll-pin attached hubs: Deere 7000, Kinze early 2000

Shown with optional DK01 leveling kit for adverse conditions and Internal Deflectors pictured above. Drop down brackets are designed for paired 13" wheels to help maintain a level closing wheel arm assembly in loose soils. Internal Deflector set reduce build up of mud and residue to ensure fractured soil is placed evenly over seed trench.



Dual 14" Cupped Razor

BSCW1444C

For planters with bolt-on hubs: Deere 1700 series, Kinze 3000 and up, Harvest International, Horsch, White 6000,8000, and 9000 series and others.

- 1/4" thick, heat-treated wheels, with 18 beveled razor teeth
- CHU44B2 cast hubs with 40 mm 5203 double row bearing with 6 lip seal

The BSCW1444C, 14", 14 toothed cupped razor wheels are a sound choice for producers who plant most of their crops from high moisture to dry conditions.

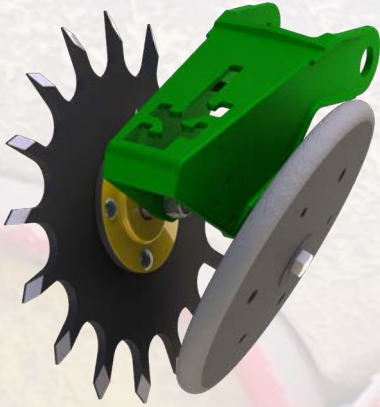
*Works Great
in Cover
Crops!*



*14 beveled, razor style teeth,
Crumble Sidewalls while cupped
design **Squeezes** trench closed.*

Closing Wheels

Single 15" Spading



BSCW1544 L/R

- For planters with bolt-on hubs: Deere 1700 series, Kinze, White, and Harvest International ,Horsch and others
- 3/8" thick, 15" diameter right and left toothed steel wheels with diamond shaped points
- CHU44B2 cast hubs with long life 40mm 5203 double row bearing with six lip seal

BSCW1543 L/R

For Deere 7200 series planters.

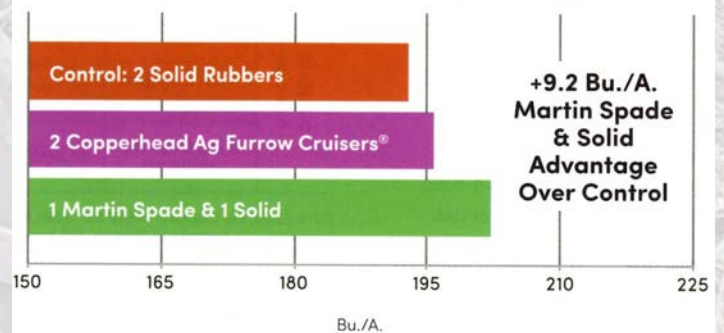
BSCW1541 L/R

For planters with roll-pin attached hubs: Deere 7000, Kinze early 2000



Photo credit:
Southern FS Marion, IL

2-YEAR CLOSING WHEEL YIELD ADVANTAGE



- Multi-year data at Beck's Kentucky PFR site has demonstrated one significant take home message: these soil types benefit from a crumbling, closing action, not a pressing action.
- Alternative closing wheel setups consistently outperform two solid rubber closing wheels in our research.

Dimple Closing Wheels 20 Point Crumbler

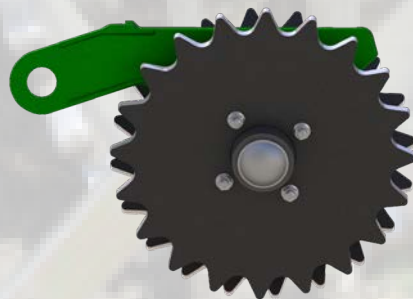
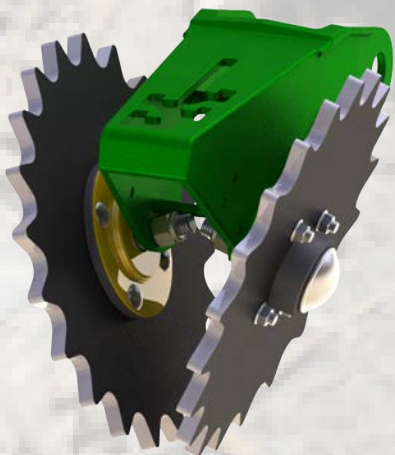
BSCW1344D

For planters with bolt-on hubs: Deere 1700 series, Kinze 3000 and up, Harvest International, Horsch, White 6000,8000, and 9000 series and others.

*Also available for Deere 7000, 7200 and early Kinze 2000 series

- 1/2" thick, heat-treated T-1 wheels, with 20 rounded points out last poly/plastic
- CHU44B2 cast hubs with long life 40 mm 5203 double row bearing with 6 lip seal

The BSCW1344D, are a sound choice for producers who plant most of their crops from medium moisture to dry conditions. The 20 rounded points help this closing system perform well in hard sod conditions plus they frequently outperform factory closing systems in no-till and minimum till soil conditions.



20 Rounded Points Crumble Sidewall.
Less aggressive than spike closing wheels.
Works well on high speed planters



Closing Wheel Options

DCK01 Drag Chain Kit

- Heavy square edge cross chain and brackets
- Bolts to all Max-Emerge units
- Fits Kinze and White units with bolt-on wheels
- Kinze 2000, JD 7000 will need holes drilled for mounting

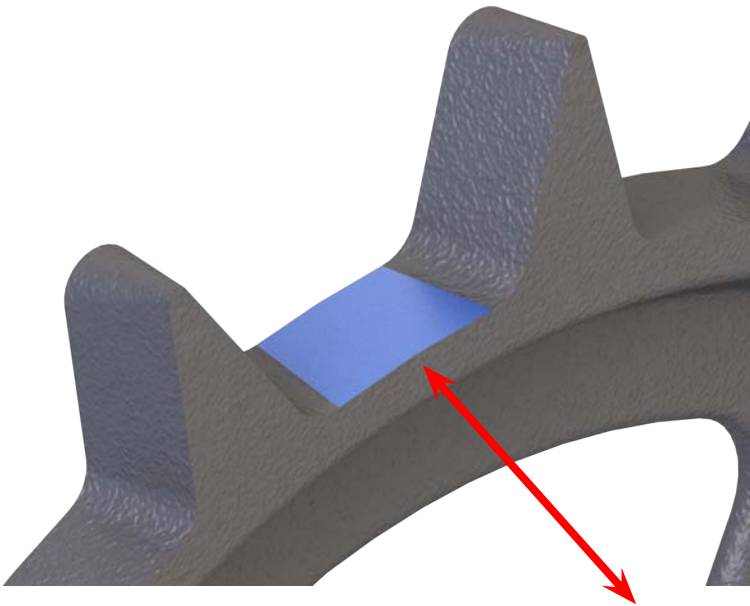
Following behind the Closing Wheels, our Twisted Drag Chain helps to further crumble and level the soil. This helps to even out the rate of drying and ensures the soil does not dry past seed depth. This is a low cost, low maintenance way to help increase uniform emergence in the drier parts of the field and is a must when using the spading closing wheels in minimum till.



Crusher



Lightweight (9.5 lbs) cast fCrusher Closing Wheel. Tapered tooth design allows firming on one side and crumbling on the other. Drafted tooth keeps its entire foot print on the ground. No more wearing one side of plastic until it has to be flipped. Long life ductile cast iron will run for years and years. Martin Duty with 6 lip seal design out lasts competitive products by years.



After the spike teeth crumble the side wall, a $\frac{3}{4}$ " wide flat surface between the teeth presses soil tighter around seed, for better seed to soil contact. Competitive products that have a beveled edge or raised center section, allow soil to "blow up" above the seed. fCrusher's flat surface presses soil tightly against seed, reducing, if not eliminating air pockets. We have seen as much as 1 day earlier spike thru when compared to other spike wheel systems.

P/N 800711. For planters with bolt-on hubs: Deere 1700 series, Kinze 3000 and up, Harvest International, Horsch, White 6000,8000, and 9000 series and others.

P/N 800711-72. For JD 7200, bearing set 203JD and 6203

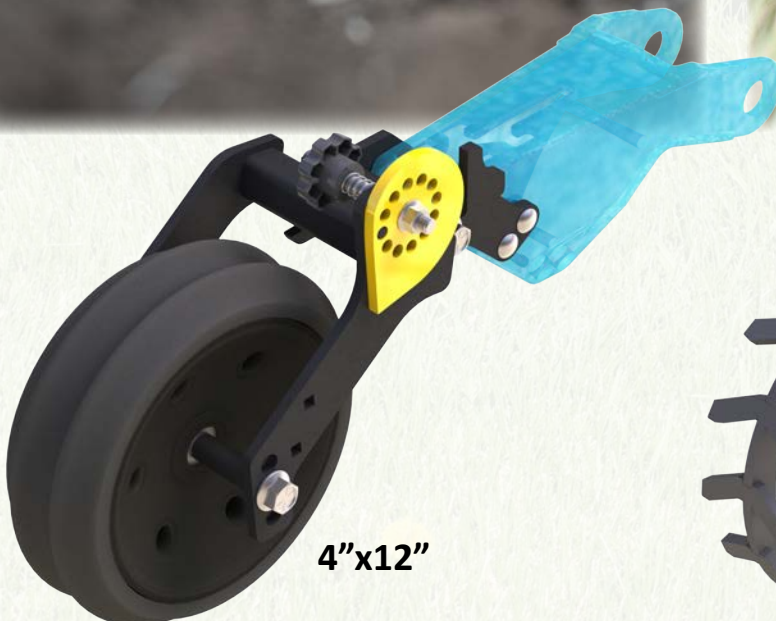
MartinTill 2nd Stage Closer



6"x12"

*Patent Pending

- MartinTill fCrumbler, 6"x12" or 4"x12" Rubber press wheel seals and levels air pockets left in seed trench to ensure ideal seed to soil contact.
- Cam adjust allows adjustment of pressure applied by press wheel.
- Easily mounts to most Double V style OEM closing wheel brackets.



4"x12"



4"x12" fCrumbler (Shown)
or
6"x12" fCrumbler

MartinTill 2nd Stage Closer

Crumbler



A new option for our 2nd stage closer, or a factory two stage closer! The fCrumbler mulches and firms the seed trench without smearing or packing like a rubber press wheel. Laser cut cleats have a sharp corner to aid crumbling, unlike competitive products using round bar. These properly spaced cleats, size material while leaving a mulched surface which reduces crusting. This design prevents mud build up from wet conditions or fertilizer application that are common with a solid rubber wheel.

Available in 4"x12" or 6"x12"
Martin Duty, with 6 lip seal bearing.
Close the furrow with the best.

Case IH Closing Wheels

BSCW9ZC

9" Cupped Razor Closing Wheels for 2000 series

BSCW8ZC

8" Cupped Razor Closing Wheels for 800, 900 & 1200 series

- Replaces closing disk on Case IH planters with offset closing wheel arm
- Fits Deere or Kinze shallow closing systems

Moist soil is moved toward the seed at seeding depth. In wet conditions, the soil is prevented from forming a continuous ribbon by the lifting action of the teeth as they rotate up out of the soil.

Benefits include:

- Closing wheel arm pressure can be greatly reduced
- Seeding depth does not have to be raised to ensure emergence
- Soil above the seed is loose, allowing quicker emergence in a compaction-free environment
- Sidewall compaction is eliminated



BSCW899
9" Spading
Closing Wheels



9" Cupped Razor Closing Wheels for CASE IH

We decided to make a change on our closing wheels. We are using the Martin Razor Wheel on our row cleaners and liked the performance. Martin has introduced a new closing wheel based on similar design but made it into a cupped style wheel, so we installed it on our corn planter. In this most difficult planting season, the 9" Martin Cupped Razor Wheel did an excellent job. It worked better than the factory style concave version for improving closing results. It crumbled the soil very nicely to close the furrow. I was very pleased!

Wes Leeper—Leeper Farms—Marysville, OH

Case IH Closing Wheels

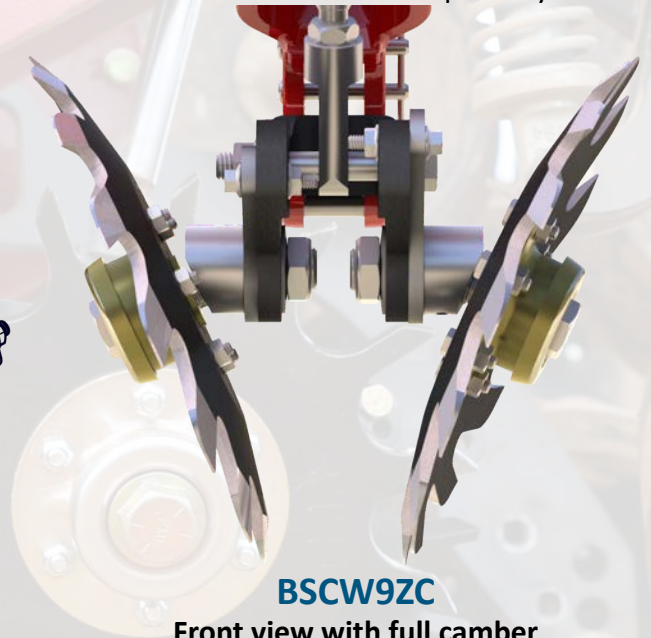
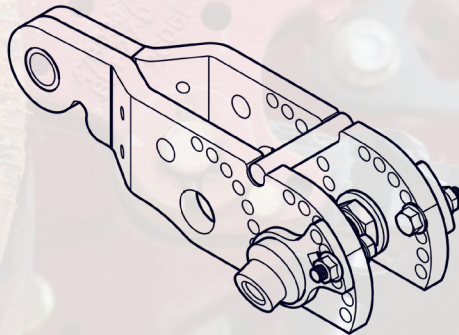
CNH Camber Adjust V-Style Closing Kit

For Case 2000 Row Unit



*Shown with BSCW9ZC
Sold separately.

- Changes angle of Case standard stance to V style for better gathering action.
- Allows fine adjustment of toe in to fit your specific environment needs.
- BSCW9ZC Sharpened Teeth chip side wall while forcing soil towards seed to close furrow
- Updated Swing Arm with more clearance means less plugging



BSCW9ZC

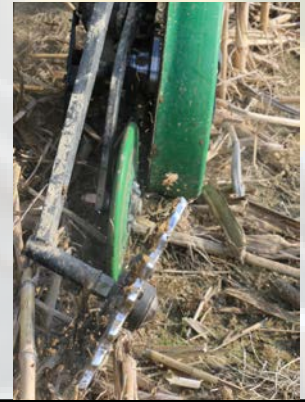
Front view with full camber adjustment.



Grain Drill Closing Wheels

BSCW156D for 60 and 90 series

- 1/2" thick, 13" diameter with 20 rounded points or 12" 18 point for Pro Series, crumbles side walls
- Can use 13" Spading Closing Wheels in place of 20 point Dimple in high moisture conditions



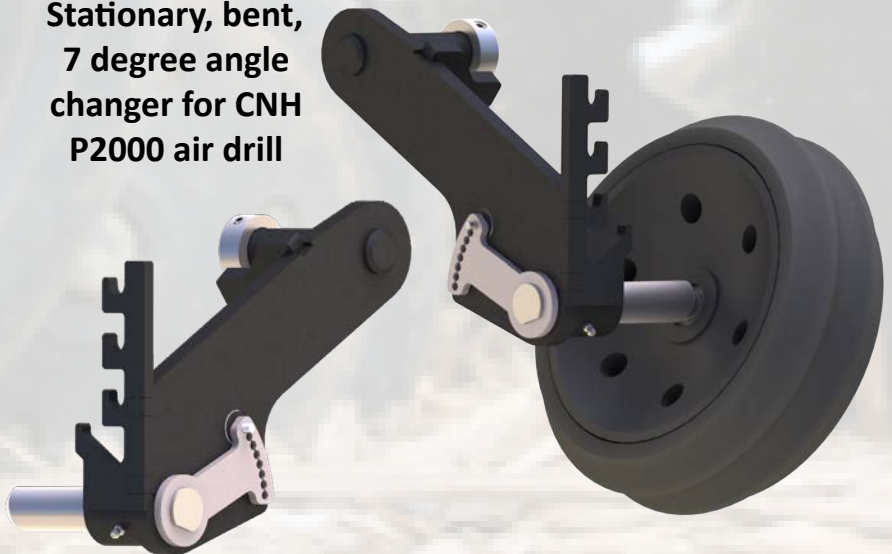
BSCW75D for 50 series

- 40 mm 5203 bearing with six-lip seal
- Double-threaded specially designed axle fits Deere 750 and 1850 drills



Closing Wheel angle changer for CNH Air Drills

Stationary, bent,
7 degree angle
changer for CNH
P2000 air drill



Ajustable angle changer for CNH 500T air drill.
0-11 degree adjustments with quick adjust
knob

Weight Transfer System

Planter Wing Hydraulic Down Force System

Revolutionizing Planter Performance for Precision Farming

Achieve superior planting performance with the Planter Wing Hydraulic Down Force System. This innovative system ensures consistent planting depth, optimal soil contact, and unmatched reliability for high-efficiency farming.

Key Features

- **Increased Flotation:** Transfers excess weight from the center frame to the wings, reducing soil compaction and ensuring consistent performance in uneven or soft ground.
- **Prevents Wing Float in Tough No-Till Conditions:** Keeps wings from floating when row unit down force is increased. Easily offset this by increasing PSI until linkages are parallel.
- **Cab-Mounted Adjustability:** Adjust down force on-the-go for optimal planter performance.
- **Large Color-Coded Hydraulic Gauge:** Easily monitor pressure from the cab with the front-mounted gauge.
- **Innovative Bracket Designs:** Spread forces to existing frame structures to greatly reduce loads on bolts, enhancing durability and reliability.
- **No Welding Installation:** Maintain planter resale value with bolt-on simplicity.
- **Optimum Cylinder Bores:** Sized based on engineering calculations to prevent overstressing the toolbar, ensuring safe and efficient operation.



WTS Force Calculations at 3000 psi

Part Number	Description	Cylinder Bore	A	B	C	D
900081	JD 1775 2023+ 16 Row 30"	3"	3613	1806	7226	465
900083	JD1770/75 2022 & Earlier 16 Row 30"	3"	3613	1806	7226	465
900244	JD 1770/75 24 Row 30"	3.5"	5773	2886	11545	291
900283	JD 1790/95 16/32 Row 30"	2.5"	5781	2891	11563	291
900320	JD 1790 24 Row 20"	2.5"	5365	2682	10729	313
900356	JD 1770/75 2022 & Earlier 12 Row 30"	2.5"	4516	2258	9032	372
900441	JD DB60 (Double Bar Only)	3.5"	4772	2386	9544	352
900454	CIH 1255 24 Row 30"	3.5"	5516	2758	11032	305
900600	Massey 24 Row 20"	2.5"	2461	1230	4921	683

A = Force Applied to Center of Wing

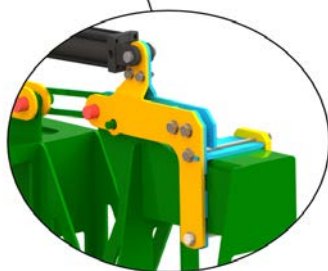
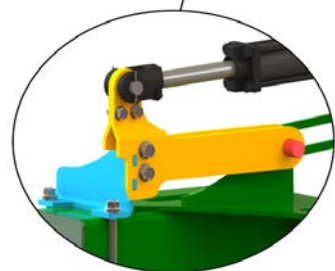
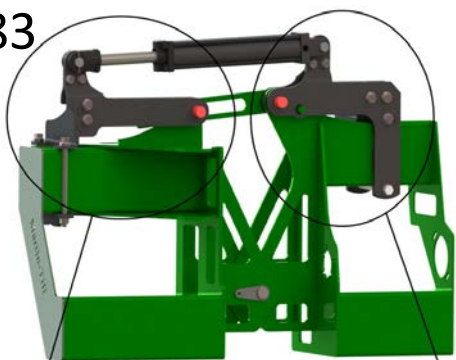
B = Force Applied to End of Wing

C = Force Lifted off Center

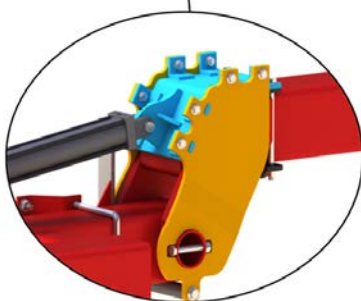
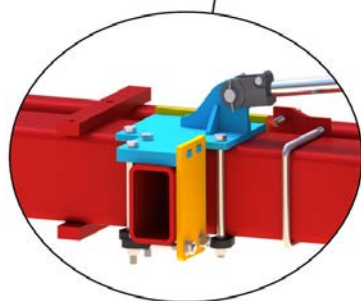
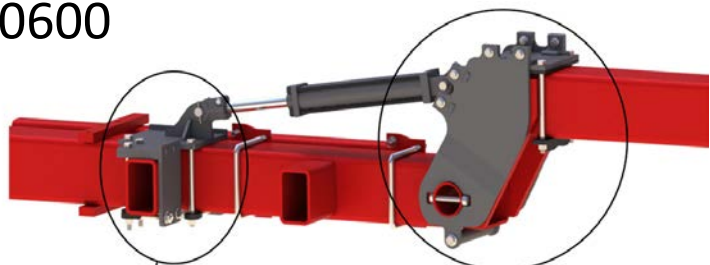
D = Psi Required to Transfer 560lbs (10 Bushels)

WTS Models

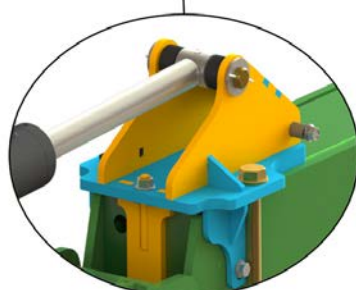
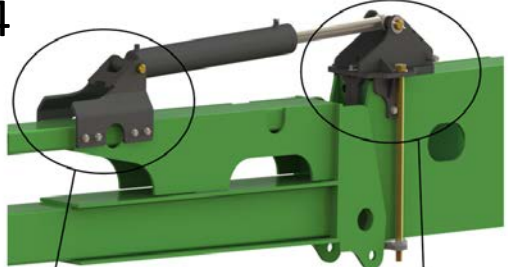
900283



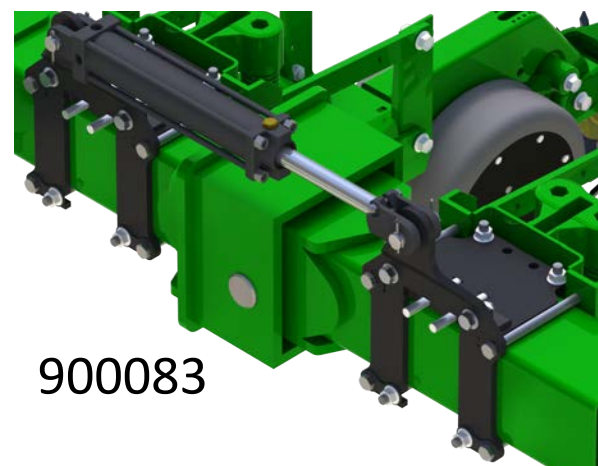
900600



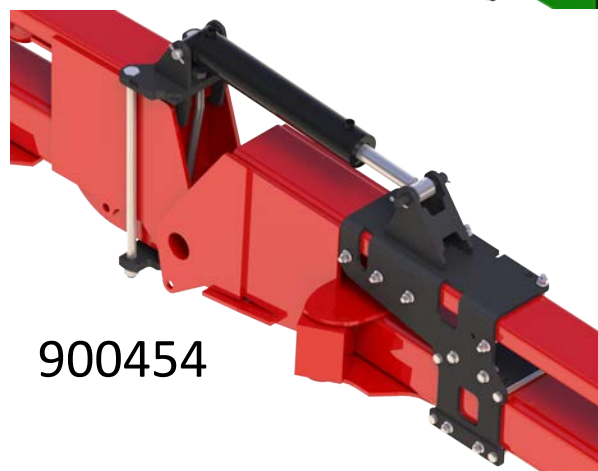
900244



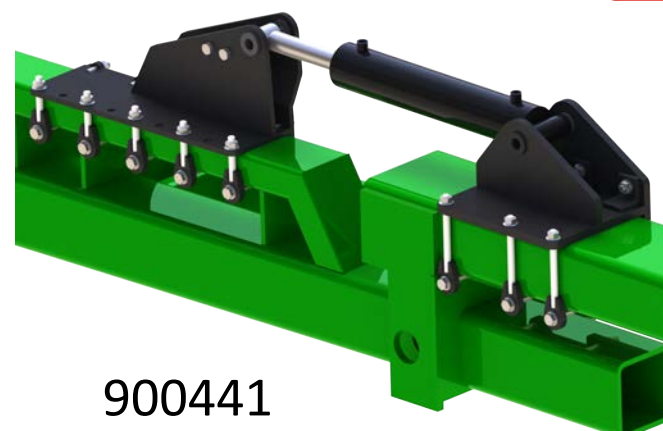
900320



900083



900454



900441

Build your Row Cleaner at www.store.martintill.com

BA1360STM



Add Z for Razor Wheel in place of Spike BA1360Z



Without Coulter

- A = ALL Common row units

Fits OEM No Till Coulter

- DC = Deere 7200 and up
- KC = Kinze 2000,3000
- K4C= Kinze 4000

Example

- B= Bundle
- A= Fits all common planter row units
- 60= 60 deg
- 45= 45 deg
- S= Spike Wheel
- Z= Razor Wheel
- T= Side Treader Wheel
- M= Cam Adjust
- Smart Clean Cylinder and mounting bracket must be ordered separately

BA1345Z Basic

A= ALL Common row units

Z= Razor

1345=45 deg



BDC1360 Basic

C=Coulter



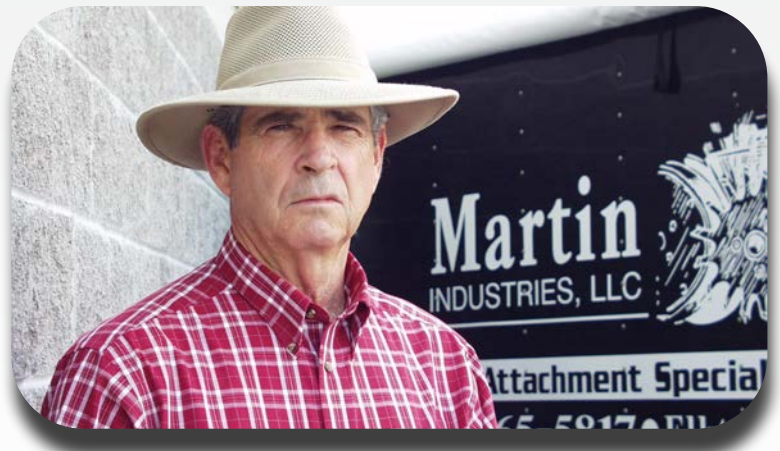


The most trusted name in no-till™

Warranty

Martin Industries, LLC warrants its product to be free from defects in materials and in workmanship for one full year from date of sale to the original user.

- The warranty is valid if Martin Industries LLC is notified of the defective part within 30 days.
- Martin Industries, LLC has the option to either repair or replace any parts that were determined to be defective due to material or workmanship.
- Any improper use, including operation after discovery of defective or worn parts, operation beyond rated capacity, or substitution of parts not approved by Martin Industries, LLC. shall void this warranty.
- No dealer, employee, or representative is authorized to change this warranty in any way or grant any other warranty unless such change is in writing and signed by an officer of Martin Industries, LLC at its home office.
- Martin Industries LLC will not replace row units or other manufactures parts that may be damaged during use.



Notes:

Notes:



Martin-Till[®]

Est 1991

206 Elk Fork Road • Elkton, KY 42220
Phone: 800-366-5817 • Fax: 270-265-9896

www.martintill.com
www.store.martintill.com
sales@martintill.com



ISO 9001:2015
Certified

**ISO 9001
CERTIFIED COMPANY**

 **PRI Registrar**
PERFORMANCE REVIEW INSTITUTE