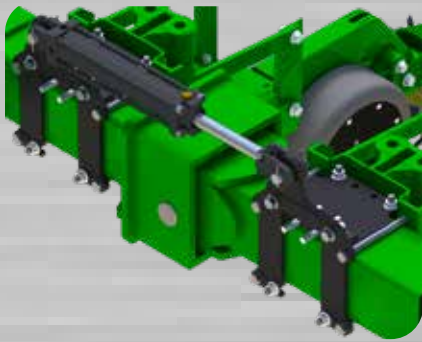


# Martin-Till

WELCOME TO THE MARTIN-TILL® PLANTING SYSTEM





## ***A Letter From Our Founder***

**Thank you for considering our products. We feel honored to be able to serve your needs. As farmers ourselves, we know the frustration that unforeseen obstacles can bring, especially inclement weather. While we can't do anything about untimely rains, we can help equip your planter to allow for more time spent planting and less time waiting to get seed in the ground.**

**Our customers believe that Martin-Till® products provide an excellent return on their investment. We know this because a large percentage of them are repeat customers. Our planter attachments help make it possible to plant into higher levels of residue and moisture. Higher levels of mulch means less erosion, improved soil tilth and fertility, which can reduce production costs. Our goal is to increase yields and save you time and money. We hope you find something in our catalog that will make this year's planting go better for you. After all, you deserve the best!**

*Howard Martin*





Planting system.....	4-5
Hub and Bearing Assemblies.....	6
Wheels Selection.....	7
Floating Row Cleaner Options and Versions.....	8-9
Floating Row Cleaners for Coulters.....	10
Parallel Link Floating Row Cleaners.....	11
Narrow Floating Row Cleaners.....	12
Floating Row Cleaners without Coulters.....	13
Twin Row Floating Row Cleaners .....	14
SmatClean Row Cleaner Adjustment system.....	15-17
Unit-Mounted Fertilizer Openers.....	18
Combination Floating Row Cleaners and Fertilizer Openers.....	19
Thrash Master Concave System.....	20-21
Combination Floating Row Cleaners and Fertilizer Openers.....	22
Rigid Mounted Pin Adjust Row Cleaners and Mounting Brackets.....	23-24
Closing Wheels & Options.....	25-27
NEW <i>fCrusher</i> Closing Wheel.....	28
Second Stage Closer.....	29
fCrumbler for Second Stage Closer.....	30
Case IH Closing Wheels & V-Style Closing Kit Update.....	31-32
Grain Drill Closing Wheels.....	33
Weight Transfer System.....	34-35
How to order.....	36
Warranty.....	37



## Opening Systems

Residue clearing wheels and side treader wheels clean crop residue, dirt clods and other obstacles from the row in order to improve:

- Furrow cleaning, for improved seed-to-soil contact
- Planter row unit ride, for less bounce and twisting of unit
- Ease of disc v-opener cutting by lightly tilling the seed furrow
- Consistency of emergence by allowing soil to warm up sooner

## Smart Clean™

### Row Cleaner Adjustment System

The exclusive Martin-Till® Smart Clean™ Row Cleaner Adjustment System provides an easy-to-use mobile or ISOBUS app to allow the operator to raise and lower floating row units on the go by varying the amount of air pressure in the cylinders. Benefits include:

- Enhanced row unit ride
- Improved ability to properly clean the soil ahead of seed furrow to reduce residue in furrow
- Wireless control allows for less equipment in the cab
- 1 psi increments allow for more precise row cleaner control
- Eliminates dangerous, time-consuming manual row cleaner adjustments
- Ability to lift up to reduce furrowing in loose soil or push down in heavy residue at the press of a button

**ISOBUS  
 Compatible!**  
 pg.14



## Unit-Mounted Fertilizer Openers

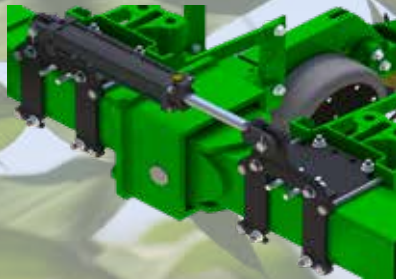
Mounted rigidly to the row units, Martin-Till® Unit-Mounted Fertilizer Openers (UMOs) follow the row unit over undulating terrain to place crop nutrients at seed depth either one, two or three inches from the seed furrow. Features and benefits include:

- Integrated design with row cleaner at front of row unit
- Low- to high-volume rate options
- Single or dual placement. Dual UMOs allow for yield-enhancing 2 X 3 x 2 fertilizer application
- Place nitrogen and fertilizer below soil surface to reduce off-site movement
- Increase nutrient use efficiency, early-season vigor and yields





Shown on 16 Row JD1770



## Weight Transfer System

Introducing an Innovative Weight Transfer System developed by Martin Industries to assist with re-distributing weight from center of planter to wings. Compaction reduces plant vigor and yield. Shallow or inconsistent planting due to poor control of planter wings also robs yield. Most planters have a “weight problem”. Excess weight in the center of the planter or improper weight distribution is a constant concern.

- In-Cab Control Box—Allows for easy adjustment as you plant
- Kits available for 12 and 16 Row JD 1770/1775, 1790/1795 & 24 Row JD 1770.
- Bolt-On Bracket design (no welding) provides easy installation
- Interlocking tab and slot design fit together to transfer load to the tool bar

CNH V-Style closing system update. pg.27



Shown with BSCW1444C. Sold separately.

## Closing Systems

Often overlooked, proper row closing is a key component of a profitable planting program. Martin-Till® Spading Closing wheels and twisted drag chains help you seal the row for more consistent germination and emergence.

- Close the seed furrow slot without compacting the soil surface
- Reduce infiltration of light, water, air, or chemicals into seed germination zone
- Fracture sidewall compaction to improve root development
- Improve closing action in difficult cover crop situations by adding filler plates

Second Stage Closing system. Fits most OEM closing wheel arms. pg.25

# Hub & Bearing Assemblies

## HA44270D Greaseable Tapered Roller Bearing with 3 lip seal

All Row Cleaners except 1345 use our HA44270D hub, featuring double tapered roller bearings with a triple lip seal designed to be flushed out with grease. No need to worry about over greasing this hub we recommend greasing it annually until grease comes out to flush out contaminants.

Customers often tell us they have planted with their Martin-Till® Row Cleaners for many, many years without needing to change the bearings. Cost savings over time and less in-field or shop labor maintenance are two important reasons farmers respect and choose Martin-Till® again and again.



## CHU44C

### Double Row Ball Bearing with 6 lip seal for 1345 Row Cleaners

- Heavy duty 5205 double row ball bearing
- Maintenance free bearing features a six-lip seal design allows the life of the bearing to be increased over typical two- and three-lip designs, while removing the need for routine maintenance
- Seal design features improved contamination exclusion while maintaining standard envelope dimensions



# Choice of Spike or Razor Wheel

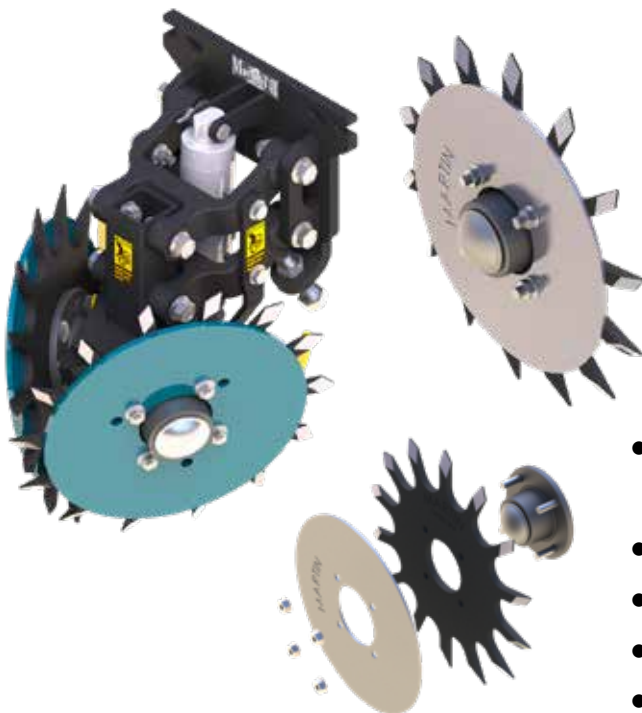


The 13" **Spike** wheel with 14 teeth moves the least amount of soil. The larger soil window between the teeth allows residue to be moved without moving vital soil away from the row center. The spike teeth intersecting lightly till the seed zone. It comes in lefts and rights and is from 3/8" thick Boron Steel heat treated for extended long life. The Spike wheel combined with provided internal deflectors (scrapers) performs well in green material.



The 12.5" **Razor** wheel with 12 teeth performs excellently in cover crops. It will not move as much soil as competitive products but slightly more than a spike wheel. The angled teeth drop material as the wheel exits the ground preventing wrapping and when combined with our internal deflector it remains wrap free even in standing cover crops. It comes in lefts and rights with full bevel on one side vs competitive products with some bevel on both sides causing theirs to wear blunt much faster. The Razor wheel is made from 1/4" T-1 then heat treated a second time for extended long life.

Add "Z" to end of part numbers to specify Razor Wheel  
example: BD1360Z



## Depth Blade (Filler Plate)

- Proven to eliminate wrapping when planting in green or standing cover crops
- Used on both Row Cleaner and Closing systems
- Provides Depth Control and Crimping Action
- 10.5" for 12.5" Razor or 13" Spike
- 12" for 15" Spike wheel

# Floating Row Cleaner Options

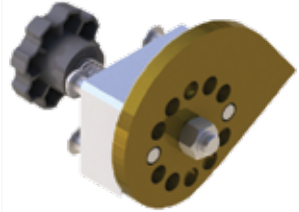


## Side Treader Wheels

**STW04A** 3 and 4 bolt hubs

**STW01K** Kinze 6 bolt hub

A key component for successful planting, aluminum side treader wheels are purchased on over 95% of floating row cleaners and are designed to reduce trenching in soft soils. They also provide traction to help keep the row cleaners turning in loosely worked ground.



## Cam Quick Adjust

**CA03D** 1360

**CA03K** 1360 for Kinze Coulter

**CA45** 1345

Cam adjusters are available for WA1360 and WA1345 row cleaners. They speed up the process of changing the working depth of the row cleaner frames. They are especially beneficial for growers who frequently switch from no-till to conventional tillage and do not have air cylinders.



## Cylinder and Brackets

- Precision Planting CleanSweep Cylinders
- SmartClean & CleanSweep compatible cylinder brackets from Precision Planting & MartinTill



## D-Lock Deflector (Scraper)

**DLD02L or DLD02R**

For use is viney residue, prevents wrapping

**Deflector installed**

**No Deflector**

**Internal Deflectors come standard with all row cleaners.**



# Floating Row Cleaner Styles

ACCR1345 Narrow



ACCR1360 Wide



Shown with optional  
Cam Adjust & Side Treader Wheels



## ACCR1360 Wide or ACCR1345 Narrow Compact Clean Ride™

- ACCR1360 Measures less than 14" from the face plate uses HA44270D Heavy Duty Greaseable Tapered Roller Bearing Hub with 3 lip seal
- ACCR1345 Measures less than 16" from the face plate uses CHU44C cast hubs and long life 5205 double row bearing with 6 lip seal
- Over 4" of vertical travel
- Allows for fitting on planters with front frame mounted nitrogen coulters or where full-size row cleaners can't be used due to planter folding/unfolding issues
- Parallel linkage allows for easy floating action, especially when paired with Martin-Till® Smart Clean™ or Precision Planting® Clean Sweep® cylinders
- Factory pre-assembled chassis saves time and makes it a cinch to install
- Choice of Spike or Razor wheel can be installed intersected or offset
- HA44270D Heavy Duty Greaseable Tapered Roller Bearing Hub with 3 lip seal

## 1360 Floating Row Cleaner

- 60 degree heavy-duty frame
- Choice of Spike or Razor wheel can be installed intersected or offset
- HA44270D Heavy Duty Greaseable Tapered Roller Bearing Hub with 3 lip seal
- Patent No. 8,631,879, D601,593 and others pending

## 1345 Floating Row Cleaner

- 45 degree heavy duty frame for narrow rows and high speed planting
- Choice of Spike or Razor wheel can be installed intersected or offset
- CHU44C cast hubs and long life 5205 double row bearing with 6 lip seal
- Smart Clean and Cam adjust compatible

# Floating Row Cleaner For Coulters

Basic with no options



## BDC1360

- Attaches to JD 7200 (and later) series planters with a John Deere unit mounted no-till coulters. It will also install behind the John Deere single disc fertilizer opener (with extended parallel arms)
- Measures 22" from planter face plate to front of row cleaner wheels
- Choice of Spike or Razor wheel can be installed offset or intersected
- HA44270D Heavy Duty Greaseable Tapered Roller Bearing Hub with 3 lip seal
- 6" Row unit set back kits available (USB72)

Shown with optional Razor Wheels, Side Treader Wheels, Cylinder & brackets



## BKC1360 Kinze 2000, 3000

## BK4C1360 Kinze 4000

- Attaches to Kinze planters with a unit mounted no-till coulters
- Measures 22" from planter face plate to front of row cleaner wheels. 6" Row unit set back kits available (USB70)
- Choice of Spike or Razor wheel can be installed offset or intersected
- HA44270D Heavy Duty Greaseable Tapered Roller Bearing Hub with 3 lip seal

## C125R The original Floating Row Cleaner

- Can be combined with most unit mounted coulters
- Choice of Spike or Razor wheel can be installed offset or intersected
- HA44270D Heavy Duty Greaseable Tapered Roller Bearing Hub with 3 lip seal
- Not recommended on JD 1700 series. Contact your Martin sales rep for compatibility



Basic with no options

# ACCR1360 Wide / ACCR1345 Narrow

## Compact Clean Ride (CCR) Parallel Link Row Cleaner



ACCR1360 Wide



ACCR1345 Narrow

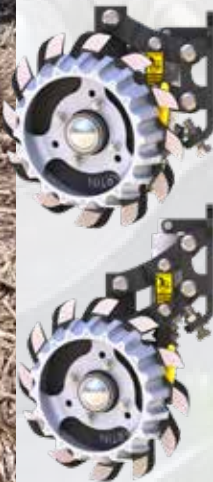


CCR™ improves planter performance with innovative cast parallel linkage design.

- Compact Design
- ACCR1360 has the same stance as our BD1360. Measures less than 14" from the face plate uses HA44270D Heavy duty greaseable tapered roller bearing hub with 3 lip seal
- ACCR1345 Perfect for high speed or narrow rows Measures less than 16" from the face plate uses CHU44C cast hubs and maintenance free long life 5205 double row bearing with 6 lip seal
- Parallel Linkage provides over 4" travel while maintaining a consistent wheel stance when riding over uneven ground
- Compatible with Precision Planting® Conceal® as well as other frame mounted openers
- Integrated Vertical Air Cylinder brackets for Clean Sweep® or Smart Clean™ cylinders purchased separately
- Chassis is assembled at factory for easier installation onto planter row unit
- Ductile cast linkages run on heavy duty hardened oil impregnated bushings
- Choice of Spike or Razor wheels can be set up so wheels offset or intersect. Intersecting Razor wheels tear thru cover crops in seed zone
- Available for most other row units including Case-IH 1200 series, Great Plains and more



Photo Credit:  
@HawkHillFarms  
Follow on Twitter



### Depth Blade (Filler Plate)

- Proven to eliminate wrapping when planting in green or standing cover crops
- Used on both Row Cleaner and Closing systems
- Provides Depth Control and Crimping Action
- 10.5" for 12.5" Razor or 13" Spike
- 12" for 15" Spike wheel



# 1345 Narrow Floating Row Cleaner

For use without Coulters

As planters get faster and row width narrower a less aggressive row cleaner is needed. Our 1345 answers this call due to:

- Narrow 45 degree frame, ideal for high speed planting or narrow rows while still clearing path for gauge wheels
- Durable CHU44C Hub with long life 6 lip double row 5205 bearing, see hub page for details
- Choice of Spike or Razor wheel can be set up so wheels offset or intersect. Intersecting Razor wheels tear thru cover crops



BA1345D\*\*

BA1345DZ\*



**BA1345** John Deere 7200 (and later), Case-IH 2000 with CNH heavy duty adapter, Kinze 2000, 3000 & 4000, White 6000, 8000 and 9000 and Harvest International Laser Pro 1

## BCIH1345

Case IH 1200 series planters without frame mounted no till coulters.



### 1345 Row Cleaner

"Moving into faster planting speeds with newer planter technology, our needs from our row cleaners changed. The Martin-Till® 1345 row cleaner gave us the ability to increase our planter speed while still managing our residue without disrupting the ride of our row units, while still maintaining the superior performance that we have come to expect from Martin Industries."

Brandon Hunt – Hunt Farms

Farmer & Tractor Pulling Professional • Hopkinsville, KY

\* Shown with Razor Wheels, Side Treader Wheels, Cam adjust and air cylinder with mounting brackets

\*\*Shown with Spike Wheels, Side Treader Wheels, Cam adjust and air cylinder and mounting brackets

# 1360 Floating Row Cleaner

For use without Coulters

**BD1360 Basic**  
w/o options



**BA1360 Deluxe**  
Options:  
Side Treader Wheels  
Cam adjust  
Smart Clean Cylinder  
and Brackets

**BA1360** John Deere 7200 (and later), Case-IH 2000 with CNH heavy duty adapter, Kinze 2000, 3000 & 4000, White 6000, 8000 and 9000 and Harvest International Laser Pro 1 without no-till coulters. 1360 measures 19" from planter face plate to front of row cleaner wheels.

## BCIH1360

Case IH 1200 series planters without frame mounted no till coulters.

All row cleaners are shown with various options, including side treader wheels, cam adjuster, Smart Clean™ system and Razor Wheels.

\*\* If equipping the rear units of a John Deere 1790 with 1360 row cleaners, long parallel arms all the way across the rear units are strongly encouraged, especially when operating in heavy residue.

\*\*\* If installing row cleaners on Kinze Twinline planters with no-till coulters, unit set back kits will be required behind the transport wheels on the rear units. Unit set-back kits (USB70) are available from Martin-Till®. If installing row cleaners on White planters, make sure there is enough clearance between the top of the 1360 frame and the bottom of the planter drive shaft. Some planters may have interference problems when the row cleaners raise up on uneven ground.

\*\*\*\* Please note the BCIH1360 will not fit on Case planters that have the hexagonal drive shaft under the parallel arms. (There is not enough upward clearance above the BCIH1360 and below the parallel arms to allow the frame to float sufficiently.)



On our farm we use the 1360 row cleaner on 2 Kinze planters. We have been using them for more than 5 years and they have required little to no maintenance. Also, our customers really like the Martin row cleaners. The durability and dependability of the Martin row cleaners allow us to recommend them with confidence.

Aaron Wolf—Farmer & Precision Ag/Equipment Sales—Wolf Farms Precision—Dixon, Illinois

# Single Wheel Floating Row Cleaner for Twin Row Planters

- Compact Design
- Measures 15.5" from the face plate
- Durable CHU44C Hub with long life 6 lip double row 5205 bearing, see hub page for details
- Over 5" travel while maintaining a consistent wheel stance when riding over uneven ground
- Quick depth adjust knob. No tools required
- Integrated Vertical Air Cylinder brackets for Clean Sweep® or Smart Clean™ cylinders purchased separately
- Heavy Duty 1-1/8 OD x 5/8 ID pivot bushings provide longer wear life.
- Choice of Spike or Razor wheels as well as STW04A treader wheel or BLD10.5 filler plate.
- Available for Great Plains, Harvest International, JD & Kinze row units



**NOW WITH WIFI  
CONNECTION!!**

# SmartClean

By Martin

## Row Cleaner Air Adjust System

*It's easy to add Smart Clean to any planter or strip till bar  
For optimized Row Cleaner control at your finger tips!*



**ISOBUS  
Compatible!**

- Electronic Proportional Control valves automatically adjust to maintain desired psi
- Can be set in 1% (lbs.) increments
- App runs in background on your Smart Phone or Tablet
- UPDATED WIFI signal allows control of row cleaners while riding alongside or behind planter.
- System defaults back to last settings when power is cycled or connection is lost
- No bulky boxes or air lines in cab
- Bi-Directional control option allows for pressurizing both sides of cylinder at same time (Dual Valve only)



# SmartClean

By Martin

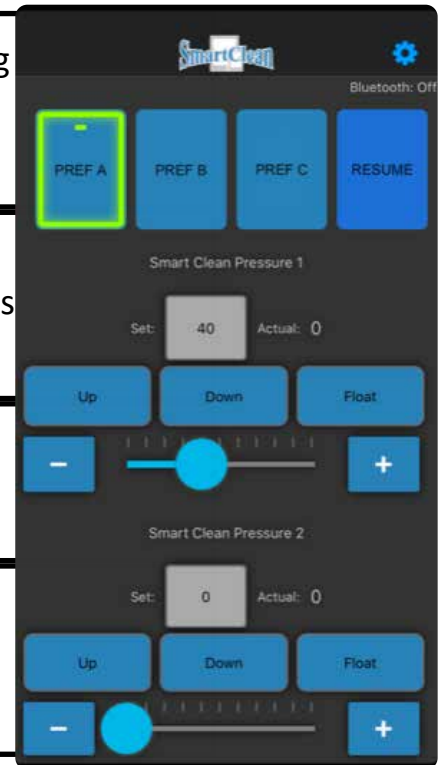
*The Smart Clean™ System makes manual row cleaner adjustments a thing of the past use your smart phone or tablet to raise lower your row cleaners.*

**900180 - Single Valve Bank (Air Bag)** - Row Cleaner Adjust and Air Bag Control - One directional control valve works same as single valve plus you can set psi on a second circuit to control air bags.

**900181 - Bi-directional** - Uses two valves allowing you to set separate air psi on both sides of piston. This method gives best control and does not come with a directional control valve.

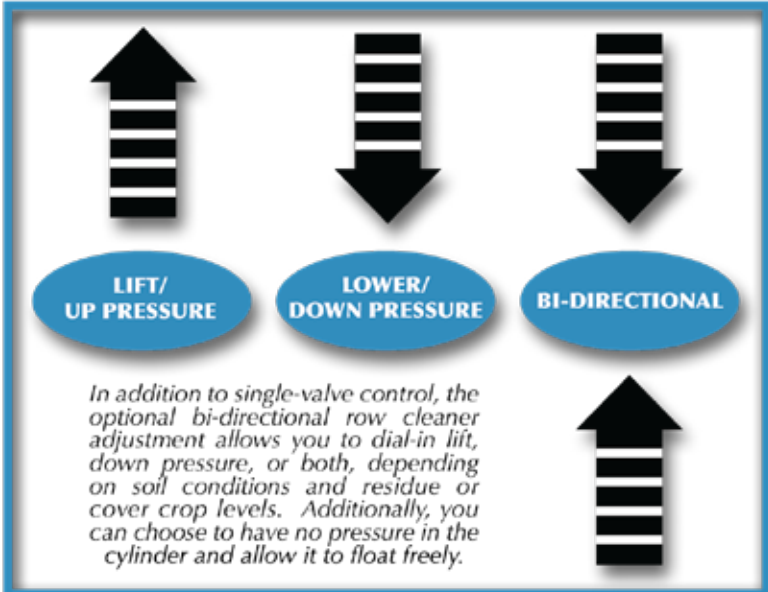
**900182 - Single Valve Bank (No Air Bag)** - Row Cleaner Adjust Only - One directional control valve lets you set psi then select up down or float.

**900183 - Dual Valve Bank** - Independant Section Control - Two directional control valves allows section control for left right or front gang back gang.



**800887** Smart Clean manual Bi Directional control

**Isobus & WiFi connection options available for control**





## ISOBUS HARNESS OPTIONS



**800535** SC-ISO ISOBUS harness extension  
**JD 2021 & earlier** Planters equipped w/ ISOBUS

**800908** SC-ISO ISOBUS harness extension  
**JD 2022 & later** Planters equipped w/ ISOBUS



**800621** ISO ADAPTER CABLE Fits **ANY** tractor w/  
 ISOBUS. Requires 800612



**800612** SmartClean ISOBUS cable extension, 40 Ft  
 For use with 800621

## Hydraulic Compressor



- Hydraulic direct drive, no belts
- Auto on/off based on a fixed pressure setting
- Requires 5gpm and low amp 12volts
- More compact than other hydraulic drive
- Easy Installation

# Unit-Mounted Fertilizer Opener (UMO150)

Consistently places fertilizer in the ground without splattering on planter!

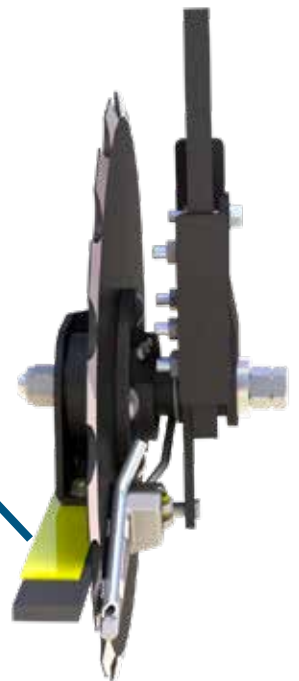
## UMO150 Features

- **Sturdy, compact design** allows more ground clearance with a more narrow profile, reducing bulldozing.
- Greaseable Double tapered bearing hub with two 3 lip seals
- 5mm thick (0.197") 14" blade or 15" notched blade. Standard 14" smooth blade for use in no-till conditions or a **15" notched blade** for use in min-till or conventional till .
- Updated & improved placement shoe for less friction
- Adjustable furrow control strap
- Mounting directly to the row unit allows precise placement from the seed, even when planting on contours.
- Can be set to place liquids 1", 2", or 3" from seed row
- Can also be set to place liquids 3/4" above or even with seed depth
- 1 1/2" OD Dry tube available for 2" and 3" lateral spacing
- Fits Deere 7000 - 1700, Kinze, White 6000/8000/9000 series, Harvest International Laser Pro and Case IH 1200 and 2000 series planters
- Patent Number 7,481,171



Patented  
spring loaded knife places liquid in  
the ground not on the planter!

Adjustable Furrow  
Control Strap  
keeps soil in place.  
Preventing blowout  
of Furrow Wall.



# Floating Row Cleaner & Fertilizer Opener Combo

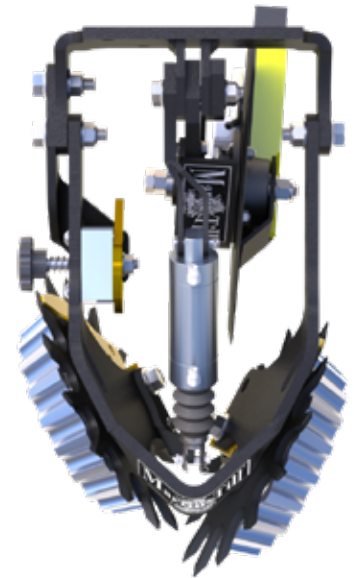
**BDUMO1345**



**BDUMO1345**



**BDUMO1360**



Shown as Basic, without options.

Shown with optional Cam,  
Side Treader Wheels and Air  
Cylinder

## **BDUMO1360\*,BDUMO1345\***

1360 and 1345 floating row cleaners with UMO150 combination. Designed to install on 7200 (and later) John Deere, White 9000 and Harvest International Laser Pro 1. Can be used on Case IH 2000 with heavy duty adapter plate (Case IH PN 4805-4385 or Martin PN MTCNHD). BDUMO1360 measures 25" from face plate to front of row cleaner assembly.

## **BKWUMO1360, BKWUMO1345**

1360 and 1345 floating row cleaners with UMO150 combination. Designed to install on 2000 and 3000 series Kinze planter units, John Deere 7000, and White 6000 and 8000 series planters. BKWUMO1360 measures 25" from face plate to front of row cleaner assembly.

## **BK4UMO1360, BK4UMO1345**

1360 and 1345 floating row cleaners with UMO150 combination. Designed to install on Kinze 4000. BK4UMO1360 measures 25" from face plate to front of row cleaner assembly.

## **BCIHUMO1360, BCIHUMO1345**

1360 and 1345 floating row cleaners with UMO150 combination. Designed to install on Case IH 1200 and 2000 series planter units without frame mounted no-till coulters. Case 1200 series requires heavy duty lower parallel arms. Will not work if drive shaft is under planter frame.



**BDUMO1360**

# Thrash Master Concave Systems



Angled bars, in different directions, improve thrashing

## Models Available

- **Case IH Flag Ship** - 7010, 7120, 7130, 7230, 7240, 8010, 8120, 8130, 8230, 8240, 9120, 9130, 9230, AFX8010
- **John Deere** - 9660STS, 9670STS, 9760STS, 9770STS, 9860STS, 9870STS, S660, S670, S680, S690
- Case IH '88 Series Concaves Coming Soon!

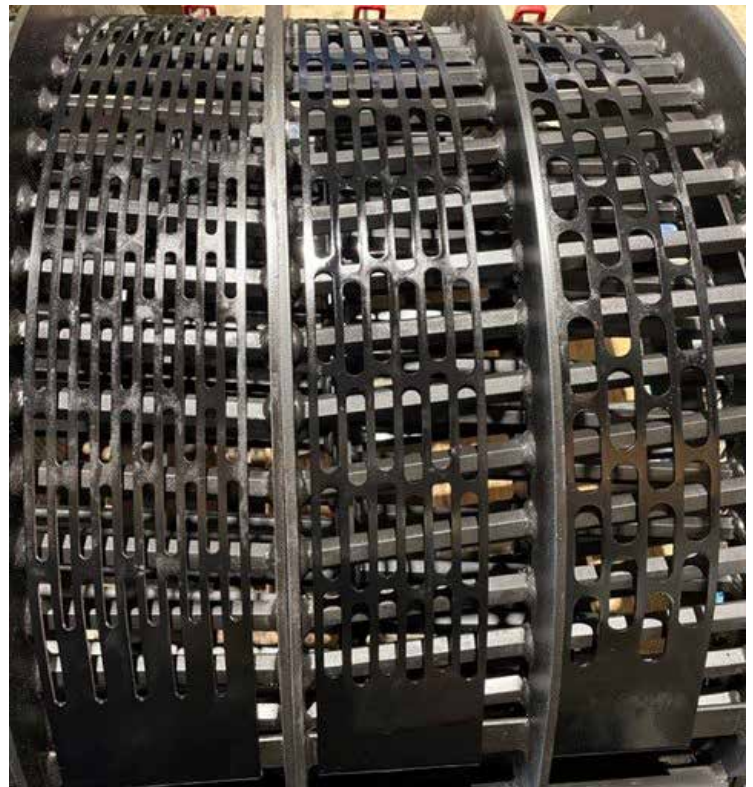
The Thrash Master Concave System increases the thrashing surface area which gives your machine the ability to thrash better and more aggressively. This is accomplished without sacrificing the grains ability to escape the rotor and prevents damage to the grain. The Thrash Master Concave System has a patent pending latch system that enables you to quickly make settings adjustments to your concaves as you switch to different crop types.

## CONCAVE BENEFITS

- 30% more thrashing surface area than a factory concave
- 10%+ less cracked and damaged grain
- Increased harvest speeds by 5-10%
- Can be used in all crops
- Increased thrashing surface area without sacrificing grain and increasing the ease of flow by 20 degrees
- Works with stripper headers
- Toolless installation

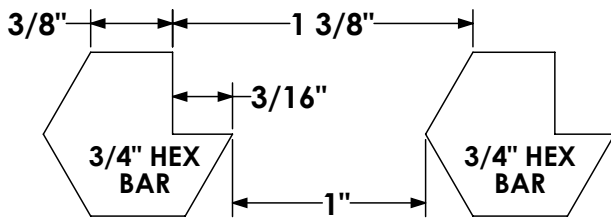
## *One Concave for ALL Crops*

\*For smaller or hard to thrash grains, we offer a specially designed cover plate that creates a forced cushion thrash.



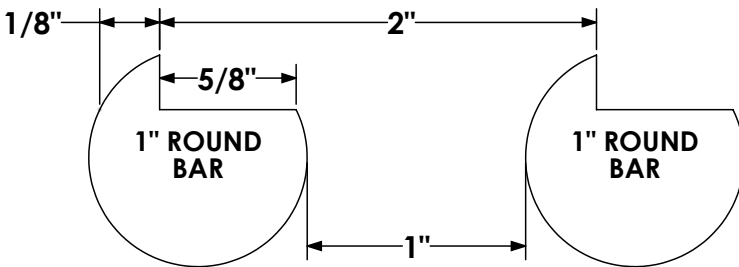
# Thrash Master Concave Systems

## Thrash Master Hexagon bars



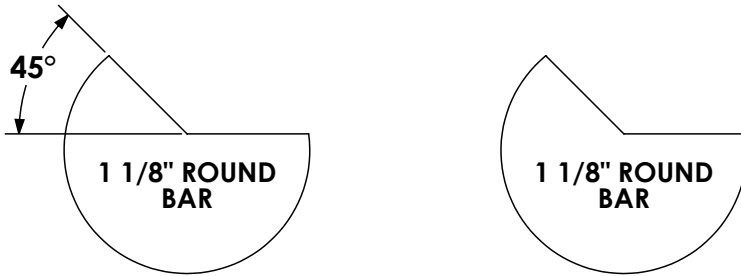
- Closer threshing point to point (1-3/8") prevent cob breakage.
- Angle bars keep cob moving for better threshing and easier separation.
- Wider threshing surface (3/8") for improved, cleaner threshing.
- No radiused edge allows grain to escape concave sooner with less obstruction.

## Competitor 1 - Round Bar 90°



- Threshing point at furthest bar spacing is 2" and only 1/8" wide. This allows cobs to fall and break easier from being over threshed.
- 1" round bar threshing surface only 1/8" wide = fast wear

## Competitor 2 - Round Bar 45°



- No aggression thrashing
- Threshing against a 45° notch acts as a boat ramp lifting into rotor
- Less bars for threshing and separating due to bar size (1-1/8" round bar)



# Dual UMO150

## Compatible with 1360 & 1345 Row Cleaners

### Features

- Dual UMOs allow for yield-enhancing 2 x 3 x 2 fertilizer application
- Your choice of Two, 14" smooth blades or 15" notched blades.
- Greaseable tapered roller bearings and 2 triple lip seals for durability
- Updated spring and placement shoe reduces friction on blade keeps blade turning in loose ground
- 3/8" O.D. delivery tube for maximum placement (up to 45 gallons per acre per opener)
- Furrow control strap reduces furrow blow-out while minimizing erosion and fertilizer spattering
- Places nutrients at various depths 3" on BOTH sides of seed for maximum usage
- Available with optional dry fertilizer tubes



### Agronomic Benefits

- Allows more nutrients to be applied
- Increases root mass
- Enhances plant size and strength
- Promotes faster growth
- Improves yields



TESTING LOCATIONS	STARTER PLACEMENT SYSTEM	TREATMENTS	PLACEMENT	EMERGED POPULATION	POPULATION DIFFERENCE	NEPS %	BU./A.	BU./A. DIFFERENCE	RETURN ON INVESTMENT
IN, OH, IA	MARTIN-TILL® DUAL UMO 2x2x2	Control: 30 units UAN	2x2	32,088	-	83.6	201.4	-	-
		30 Units UAN	2x2x2	32,454	+366	82.9	207.5	+6.1	+23.55
		60 Units UAN	2x2x2	32,023	-65	83.3	211.3	+9.9	+25.01
		30 Units UAN + 1 qt Start Right	2x2	31,760	328	80.7	206.6	+5.2	+9.57
		30 Units UAN + 1 qt Start Right	2x2x2	31,773	-315	82.7	202.6	+1.2	-5.87
KY, CIL, SIL	YETTER DUAL 2968 SERIES	Control: 30 units UAN	2x2	31,246	-	92.8	199.0	-	-
		30 Units UAN	2x2x2	30,407	-839	91.7	204.6	+5.6	+21.62
		60 UNITS UAN	2x2x2	30,245	-1,001	90.7	208.5	+9.5	+23.47
		30 Units UAN + 1 qt Start Right	2x2	30,458	-788	91.0	204.0	+5.0	+8.8
		30 Units UAN + 1 qt Start Right	2x2x2	30,750	-496	91.9	202.7	+3.7	+3.78

Corn \$3.86/Bu. Start Right \$42.00/gal. UAN \$.044/unit of nitrogen. Individual results may vary.

# Pin Adjust/Rigid Row Cleaners

Right: B1332/772  
Below: B1532/772  
Both shown with  
MT772



Patent #5,507,351

Intersecting teeth reach the entire row middle and aid in cleaning one another. It's this patented cleaning action that spawned the Martin-Till® brand name, a name synonymous with superior performance in no-till and minimum-till planting.

Can be set offset or intersecting with your choice of 13" or 15" or 12.5" Razor Wheels.

## WA1532 or WA1332

- Rigidly mounted directly to planter unit face plate
- Easily adjustable in 1/4" increments with lift assist handle and spring
- Movable axles, via the exclusive Martin-Till® D-Lock System, allow for several mounting positions (intersect, offset, retracted)
- 13" toothed steel wheels with diamond shaped points allow plenty of upward adjustment in loosely worked soils
- 15" version allows teeth to extend past edge of gauge wheel works great on ridges

B1334/892  
Shown with  
MT892



## WA1334

- Specifically designed for Case IH Early-Riser planters (For use with all pin adjust brackets which accept 2" stems)

## WA1320N

The Martin-Till® Narrow Row Cleaner Model WA1320N is designed to clean residue from the vital seed trench area with less total disturbance than regular models. Two wheels are used to ensure residue is removed from the row center and not just dragged across the row, which may occur with single wheel models.

This model is recommended for 20" planters that have all units on one bar, operating in moderate residue. Because the cleaning teeth reach their maximum depth nearer the row than other models, the seed trench is more easily opened and the trench walls are more likely to crumble. The planter path will retain more moisture where this model is used than where the regular width cleaners are operated.

B1320/772  
Shown with  
MT772



# Pin Adjust/Rigid Row Cleaners

## Mounting Brackets



### MT772

Attaches to Kinze, Harvest International Laser Pro, John Deere, White 6000 & 9000 series. Accepts 1-1/2" wheel assembly.



### MT810

Attaches to White 8000 Series planters. Accepts 1-1/2" wheel assembly.



### MT610

Attaches to White 6000 Series planters with heavy duty down pressure springs. Accepts 1-1/2" wheel assembly.



### MT1250

Attaches to Case IH 1200, 1250, 1300, and 2000 series planters for 2" tube wheel assemblies. Will not work with pneumatic down force systems.



### MT892

Attaches to Case IH 800 and 900 series planters. For 2" tube wheel assemblies. (Additional mounting kit required for early 800 series planters).



### MT512

Attaches to White 5000 Series planters. Bolts directly to planter, using existing holes. Accepts 1-1/2" wheel assembly.



# Closing Wheels Dual 13" Spading

## BSCW1344 -

- For planters with bolt-on hubs: Deere 1700 series, Kinze late 2000 and up, White 6000 & 8000
- 3/8" thick, 13" diameter right and left toothed steel wheels with diamond shaped points
- CHU44B2 cast hubs and long life 40mm 5203 bearing with six-lip seal

## BSCW1343 - For Deere 7200-7300 series

## BSCW1341 - For planters with roll-pin attached hubs: Deere 7000, Kinze early 2000



Shown with optional DK01 leveling kit for adverse conditions and Internal Deflectors pictured above. Drop down brackets are designed for paired 13" wheels to help maintain a level closing wheel arm assembly in loose soils. Internal Deflector set reduce build up of mud and residue to ensure fractured soil is placed evenly over seed trench.



# Dual 14" Cupped Razor

## BSCW1444C

For planters with bolt-on hubs: Deere 1700 series, Kinze 3000 and up, Harvest International, Horsch, White 6000,8000, and 9000 series and others.

- 1/4" thick, heat-treated wheels, with 18 beveled razor teeth
- CHU44B2 cast hubs with 40 mm 5203 double row bearing with 6 lip seal

The BSCW1444C, 14", 14 toothed cupped razor wheels are a sound choice for producers who plant most of their crops from high moisture to dry conditions.

*Works Great  
in Cover  
Crops!*



*14 beveled, razor style teeth,  
Crumble Sidewalls while cupped  
design Squeezes trench closed.*

# Closing Wheels

## Single 15" Spading



### BSCW1544 L/R

- For planters with bolt-on hubs: Deere 1700 series, Kinze, White, and Harvest International, Horsch and others
- 3/8" thick, 15" diameter right and left toothed steel wheels with diamond shaped points
- CHU44B2 cast hubs with long life 40mm 5203 double row bearing with six lip seal

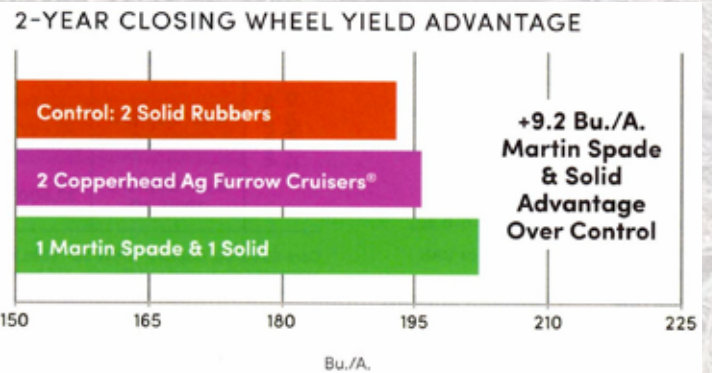


### BSCW1543 L/R

For Deere 7200 series planters.

### BSCW1541 L/R

For planters with roll-pin attached hubs: Deere 7000, Kinze early 2000



- Multi-year data at Beck's Kentucky PFR site has demonstrated one significant take home message: these soil types benefit from a crumbling, closing action, not a pressing action.
- Alternative closing wheel setups consistently outperform two solid rubber closing wheels in our research.

Photo credit:  
Southern FS Marion, IL

## Dimple Closing Wheels 20 Point Crumbler

### BSCW1344D

For planters with bolt-on hubs: Deere 1700 series, Kinze 3000 and up, Harvest International, Horsch, White 6000,8000, and 9000 series and others.

\*Also available for Deere 7000, 7200 and early Kinze 2000 series

- 1/2" thick, heat-treated T-1 wheels, with 20 rounded points out last poly/plastic
- CHU44B2 cast hubs with long life 40 mm 5203 double row bearing with 6 lip seal

The BSCW1344D, are a sound choice for producers who plant most of their crops from medium moisture to dry conditions. The 20 rounded points help this closing system perform well in hard sod conditions plus they frequently outperform factory closing systems in no-till and minimum till soil conditions.



20 Rounded Points Crumble Sidewall.  
Less aggressive than spike closing wheels.  
Works well on high speed planters

## Closing Wheel Options

### DCK01 Drag Chain Kit

- Heavy square edge cross chain and brackets
- Bolts to all Max-Emerge units
- Fits Kinze and White units with bolt-on wheels
- Kinze 2000, JD 7000 will need holes drilled for mounting

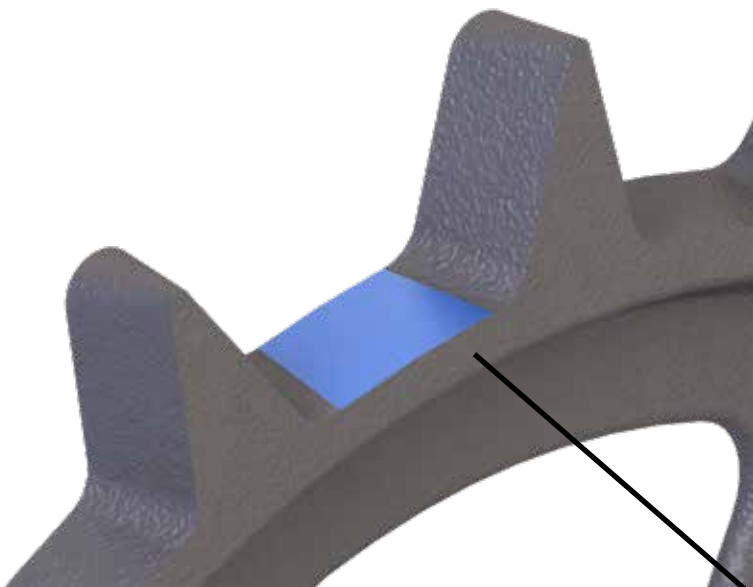
Following behind the Closing Wheels, our Twisted Drag Chain helps to further crumble and level the soil. This helps to even out the rate of drying and ensures the soil does not dry past seed depth. This is a low cost, low maintenance way to help increase uniform emergence in the drier parts of the field and is a must when using the spading closing wheels in minimum till.



# Crusher



Lightweight (9.5 lbs) cast *fCrusher* Closing Wheel. Tapered tooth design allows firming on one side and crumbling on the other. Drafted tooth keeps its entire foot print on the ground. No more wearing one side of plastic until it has to be flipped. Long life ductile cast iron will run for years and years. Martin Duty with 6 lip seal design out lasts competitive products by years.



After the spike teeth crumble the side wall, a  $\frac{3}{4}$ " wide flat surface between the teeth presses soil tighter around seed, for better seed to soil contact. Competitive products that have a beveled edge or raised center section, allow soil to "blow up" above the seed. *fCrusher's* flat surface presses soil tightly against seed, reducing, if not eliminating air pockets. We have seen as much as 1 day earlier spike thru when compared to other spike wheel systems.

*P/N 800711. For planters with bolt-on hubs: Deere 1700 series, Kinze 3000 and up, Harvest International, Horsch, White 6000,8000, and 9000 series and others.*

*P/N 800711-72. For JD 7200, bearing set 203JD and 6203*

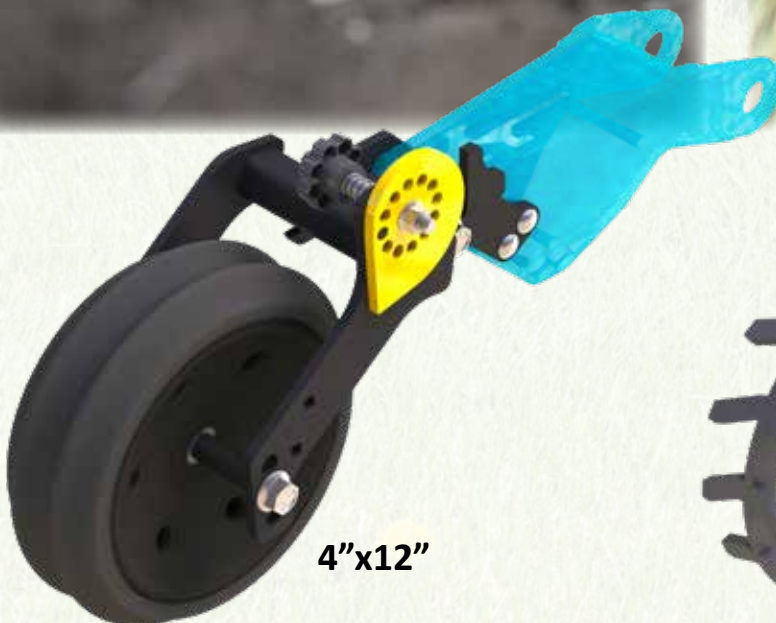
# MartinTill 2nd Stage Closer



6"x12"

\*Patent Pending

- MartinTill fCrumbler, 6"x12" or 4"x12" Rubber press wheel seals and levels air pockets left in seed trench to ensure ideal seed to soil contact.
- Cam adjust allows adjustment of pressure applied by press wheel.
- Easily mounts to most Double V style OEM closing wheel brackets.



4"x12"



4"x12" fCrumbler (Shown)  
or  
6"x12" fCrumbler

# MartinTill 2nd Stage Closer

# Crumbler



A new option for our 2nd stage closer, or a factory two stage closer!

The fCrumbler mulches and firms the seed trench without smearing or packing like a rubber press wheel. Laser cut cleats have a sharp corner to aid crumbling, unlike competitive products using round bar. These properly spaced cleats, size material while leaving a mulched surface which reduces crusting. This design prevents mud build up from wet conditions or fertilizer application that are common with a solid rubber wheel.

Available in 4"x12" or 6"x12"

**Martin Duty, with 6 lip seal bearing.**

**Close the furrow with the best.**

# Case IH Closing Wheels

## BSCW9ZC

Cupped Razor Closing Wheels for 800, 900, 1200 & 2000 series

- Replaces closing disk on Case IH planters with offset closing wheel arm
- Fits Deere or Kinze shallow closing systems

Moist soil is moved toward the seed at seeding depth. In wet conditions, the soil is prevented from forming a continuous ribbon by the lifting action of the teeth as they rotate up out of the soil.

### Benefits include:

- Closing wheel arm pressure can be greatly reduced
- Seeding depth does not have to be raised to ensure emergence
- Soil above the seed is loose, allowing quicker emergence in a compaction-free environment
- Sidewall compaction is eliminated



**BSCW9ZC**  
9" Cupped Razor Closing Wheels



**BSCW899**  
9" Spading Closing Wheels



### 9" Cupped Razor Closing Wheels for CASE IH

We decided to make a change on our closing wheels. We are using the Martin Razor Wheel on our row cleaners and liked the performance. Martin has introduced a new closing wheel based on similar design but made it into a cupped style wheel, so we installed it on our corn planter. In this most difficult planting season, the 9" Martin Cupped Razor Wheel did an excellent job. It worked better than the factory style concave version for improving closing results. It crumbled the soil very nicely to close the furrow. I was very pleased!

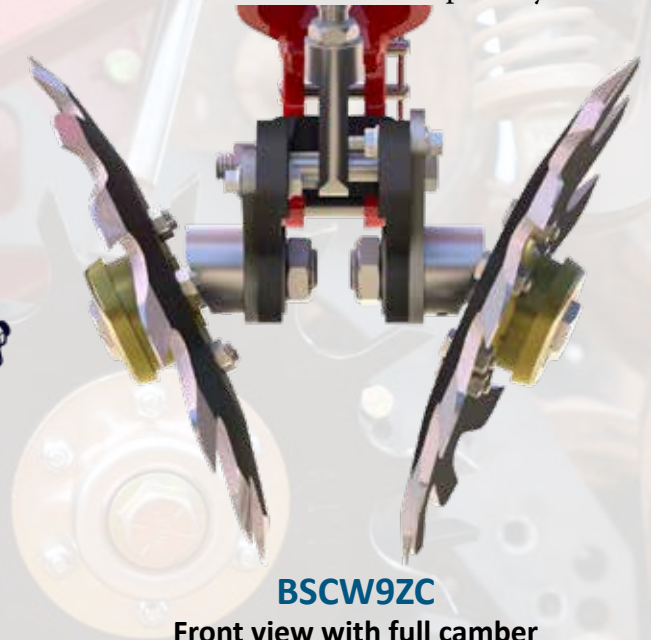
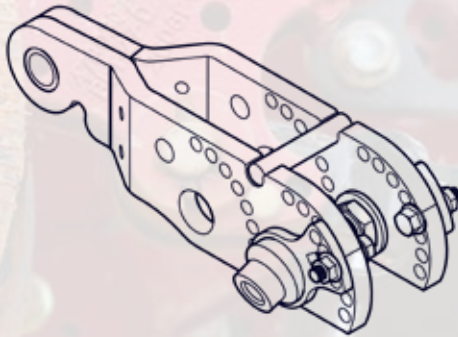
Wes Leeper—Leeper Farms—Marysville, OH

# Case IH Closing Wheels CNH Camber Adjust V-Style Closing Kit For Case 2000 Row Unit



\*Shown with BSCW9ZC  
Sold separately.

- Changes angle of Case standard stance to V style for better gathering action.
- Allows fine adjustment of toe in to fit your specific environment needs.
- BSCW9ZC Sharpened Teeth chip side wall while forcing soil towards seed to close furrow
- Updated Swing Arm with more clearance means less plugging



**BSCW9ZC**  
Front view with full camber adjustment.

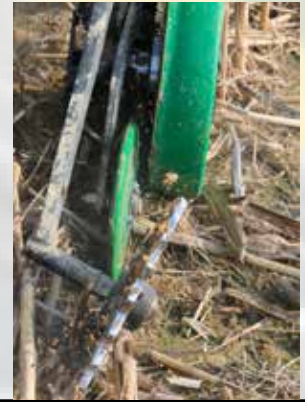




# Grain Drill Closing Wheels

## BSCW156D for 60 and 90 series

- 1/2" thick, 13" diameter with 20 rounded points or 12" 18 point for Pro Series, crumbles side walls
- Can use 13" Spading Closing Wheels in place of 20 point Dimple in high moisture conditions



## BSCW75D for 50 series

- 40 mm 5203 bearing with six-lip seal
- Double-threaded specially designed axle fits Deere 750 and 1850 drills



## Closing Wheel angle changer for CNH Air Drills

Stationary, bent,  
7 degree angle  
changer for CNH  
P2000 air drill

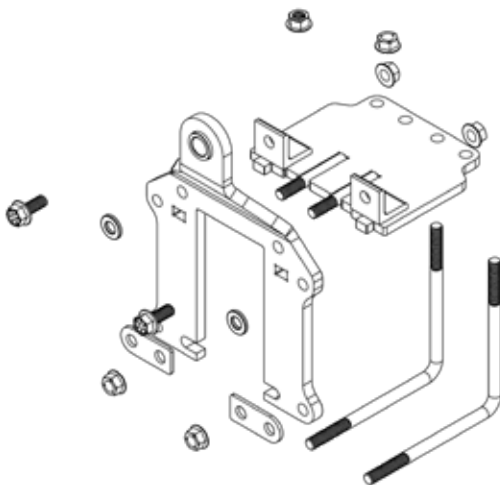


Ajustable angle changer for CNH 500T air drill.  
0-11 degree adjustments with quick adjust  
knob

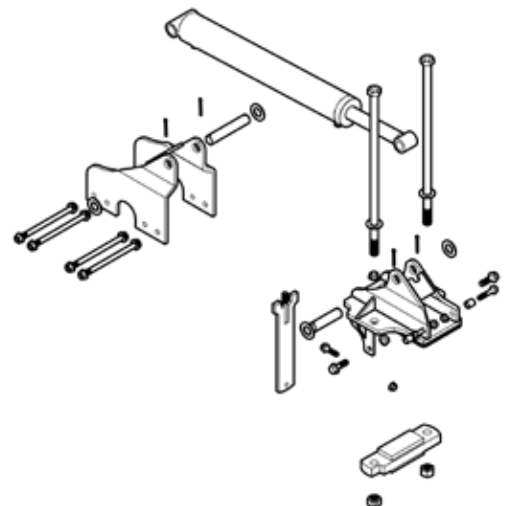
# MartinTill Weight Transfer System



- In-Cab Control Box with harness (Electronic PWM version)
- Bolt on brackets
- Grade 8 mounting hardware
- Interlocking tab and slot design fit together to transfer load to the toolbar. Combination of L bolts and row unit mounting bolts pulling in two directions ensure brackets stay put
- Industry standard durable hydraulic valve
- NOTE: Kit does not include custom hydraulic hoses or fittings
- Check fit up for Center Frame Mounted Fertilizer Tanks and Brackets for possible tank mounting bracket modifications needed

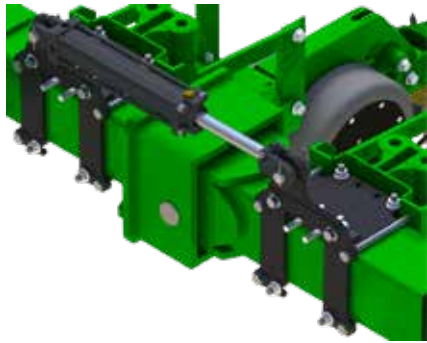


**Bolt-On Bracket design  
(no welding) provides easy  
installation  
Patent Pending**



# Weight Transfer System

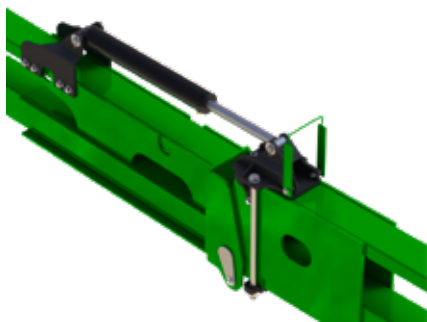
Transfer of weight from the center of the planter to the wings reduces compaction and ground pressure, more evenly distributing the weight to where it is needed most. Providing a level toolbar promoting uniform planting depths along all row units.



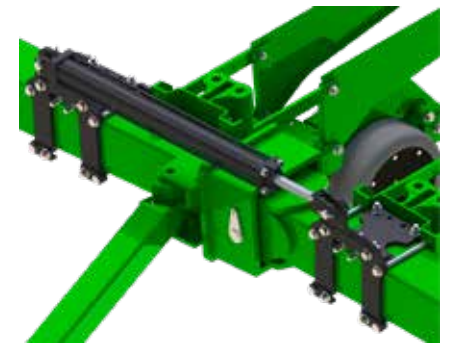
900083



900320



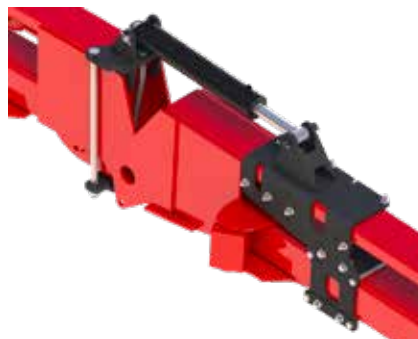
900244



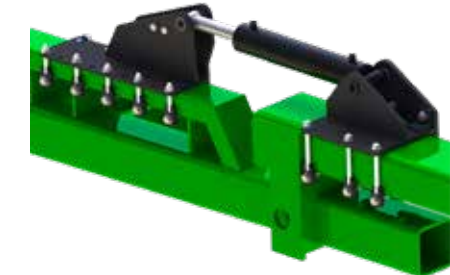
900356



900283



900454



900441

Part Number	Planter Model
900081	JD1770 16 Row. Straight Brackets. For use with fert tanks
900083	JD1770/1775 16 Row Planter.
900244	JD1770/1775, 24 ROW
900283	JD1790/1795 16 ROW.
900320	1790 24 Row 20"
900356	1770/1775NT 12 Row.
900441	DB 60
900454	CIH1255 24 Row, 30".

# Build your Row Cleaner at [www.store.martintill.com](http://www.store.martintill.com)



**BA1360D**

## **BA1360D**

### **Example**

- B= Bundle
- A= Fits all common planter row units
- 1360= 60 deg or 1345 at 45 deg
- D= Deluxe which includes Cam adjust and Side Treader Wheels
- Smart Clean Cylinder and mounting bracket must be ordered separately



Add Z for Razor Wheel in place of Spike BA1360Z

### **Without Coulter**

- A = ALL Common row units

Fits OEM No Till Coulter

- DC = Deere 7200 and up
- KC = Kinze 2000,3000
- K4C= Kinze 4000



## **BA1345Z Basic**

**A= ALL Common row units**

**Z= Razor**

**1345=45 deg**



## **BDC1360 Basic**

**C=Coulter**

# Martin-Till<sup>®</sup>

The most trusted name in no-till<sup>™</sup>

## Warranty

**Martin Industries, LLC warrants its product to be free from defects in materials and in workmanship for one full year from date of sale to the original user.**

- The warranty is valid if Martin Industries LLC is notified of the defective part within 30 days.
- Martin Industries, LLC has the option to either repair or replace any parts that were determined to be defective due to material or workmanship.
- Any improper use, including operation after discovery of defective or worn parts, operation beyond rated capacity, or substitution of parts not approved by Martin Industries, LLC. shall void this warranty.
- No dealer, employee, or representative is authorized to change this warranty in any way or grant any other warranty unless such change is in writing and signed by an officer of Martin Industries, LLC at its home office.
- Martin Industries LLC will not replace row units or other manufactures parts that may be damaged during use.



# Notes:

Notes:

Empty rectangular box for notes.





# Martin-Till<sup>®</sup>

Est 1991

206 Elk Fork Road • Elkton, KY 42220  
Phone: 800-366-5817 • Fax: 270-265-9896

[www.martintill.com](http://www.martintill.com)  
[www.store.martintill.com](http://www.store.martintill.com)  
[sales@martintill.com](mailto:sales@martintill.com)

ISO 9001:2015  
Certified

**ISO 9001  
CERTIFIED COMPANY**

 **PRI Registrar**  
PERFORMANCE REVIEW INSTITUTE

V07.22

