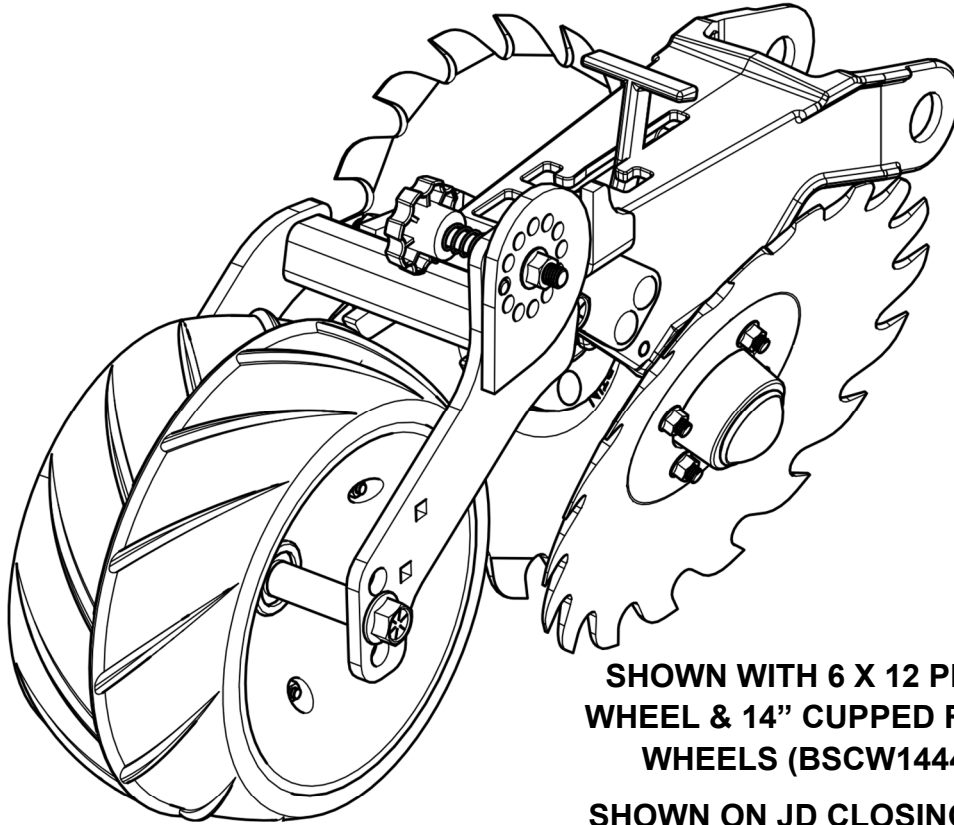


# 2nd Stage JD/HI Closer

---

## JD ME2+ & Harvest International Laser Pro **INSTALLATION INSTRUCTIONS**



SHOWN WITH 6 X 12 PRESS  
WHEEL & 14" CUPPED RAZOR  
WHEELS (BSCW1444C)

SHOWN ON JD CLOSING ARM



### **Martin Planter Attachments**

**Martin Industries LLC**

206 Elk Fork Road

Elkton, KY 42220

Telephone: 270-265-5817

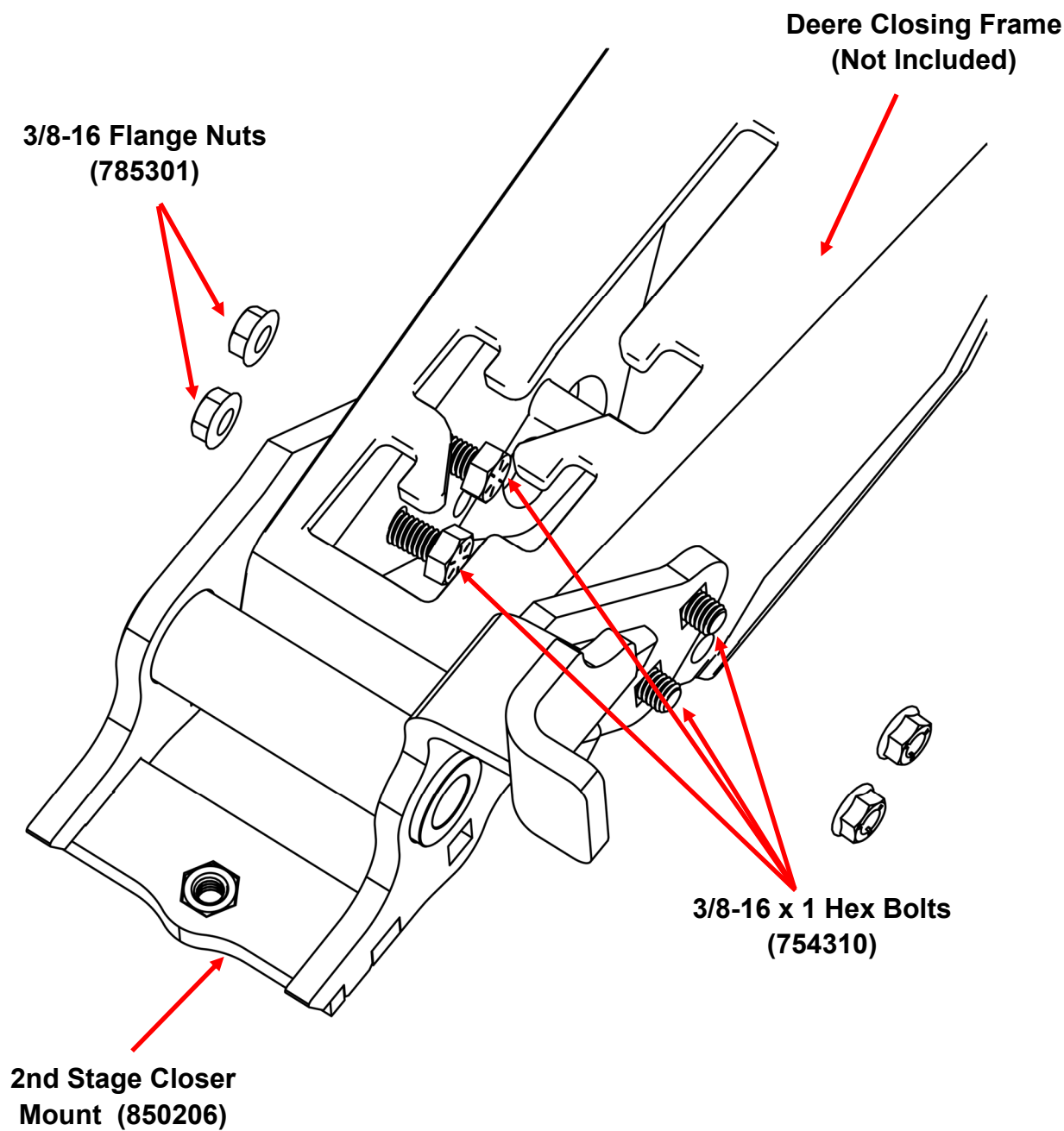
E-Mail: [martin@martintill.com](mailto:martin@martintill.com)

[www.martintill.com](http://www.martintill.com)



## STEP 1 : ATTACH TO OEM CLOSING FRAME

Use included 3/8-16 x 1 Hex bolts and 3/8-16 Flange nuts to mount to Closing Frame using the top holes as shown below.



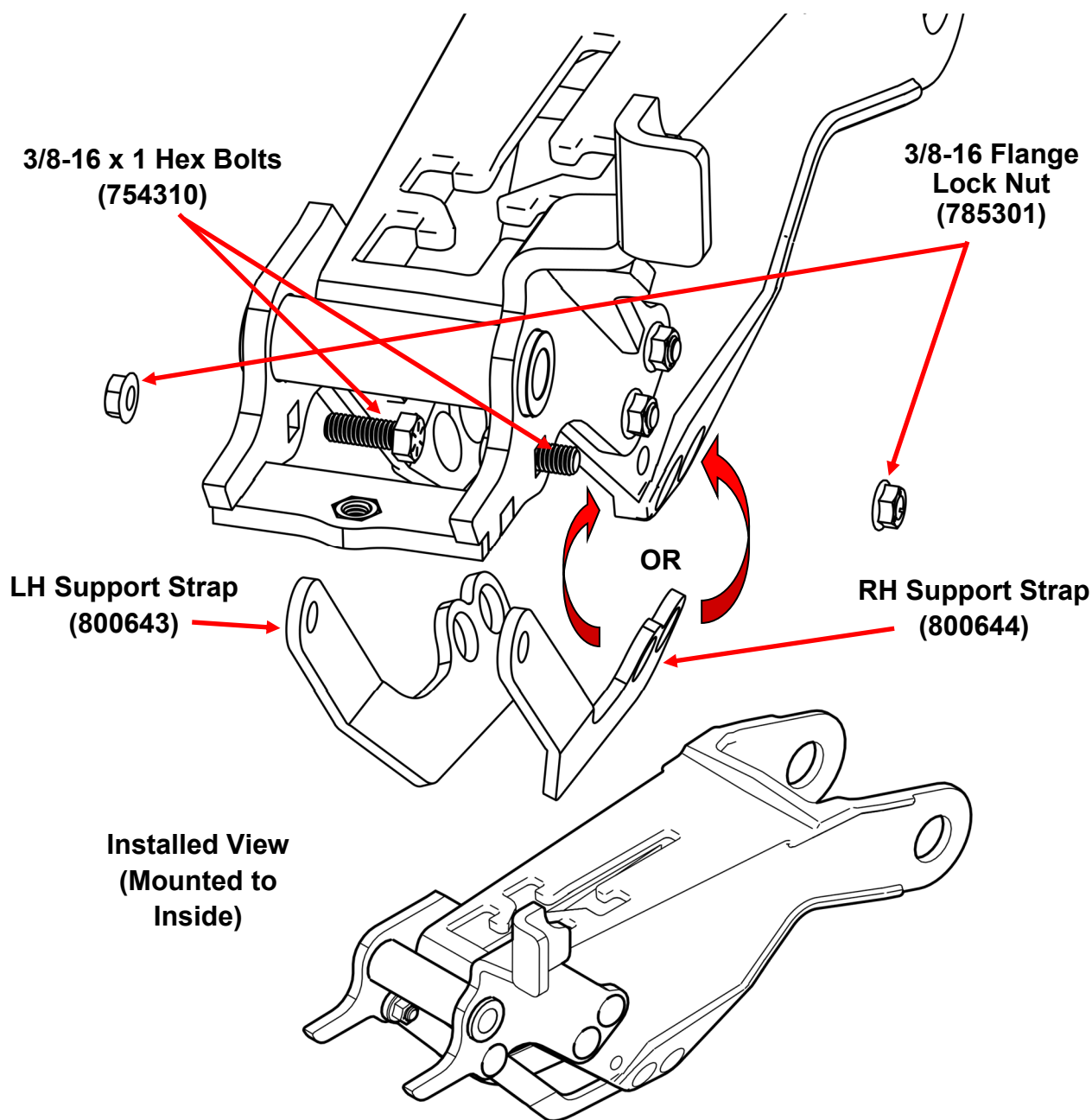
## STEP 2: ATTACH SUPPORT STRAPS TO FRAME AND MOUNT

Install Support Straps (800643 and 800644) to previously installed mount and bottom wheel holes in the inside of the John Deere Closing Arm as shown below. Secure straps to the mount with 2 x 3/8-16 x 1" Hex Bolts and 2 x 3/8-16 Flange Lock Nuts.

With Bottom holes lined up in the Support Straps and the closing frame, install wheels as you normally would.

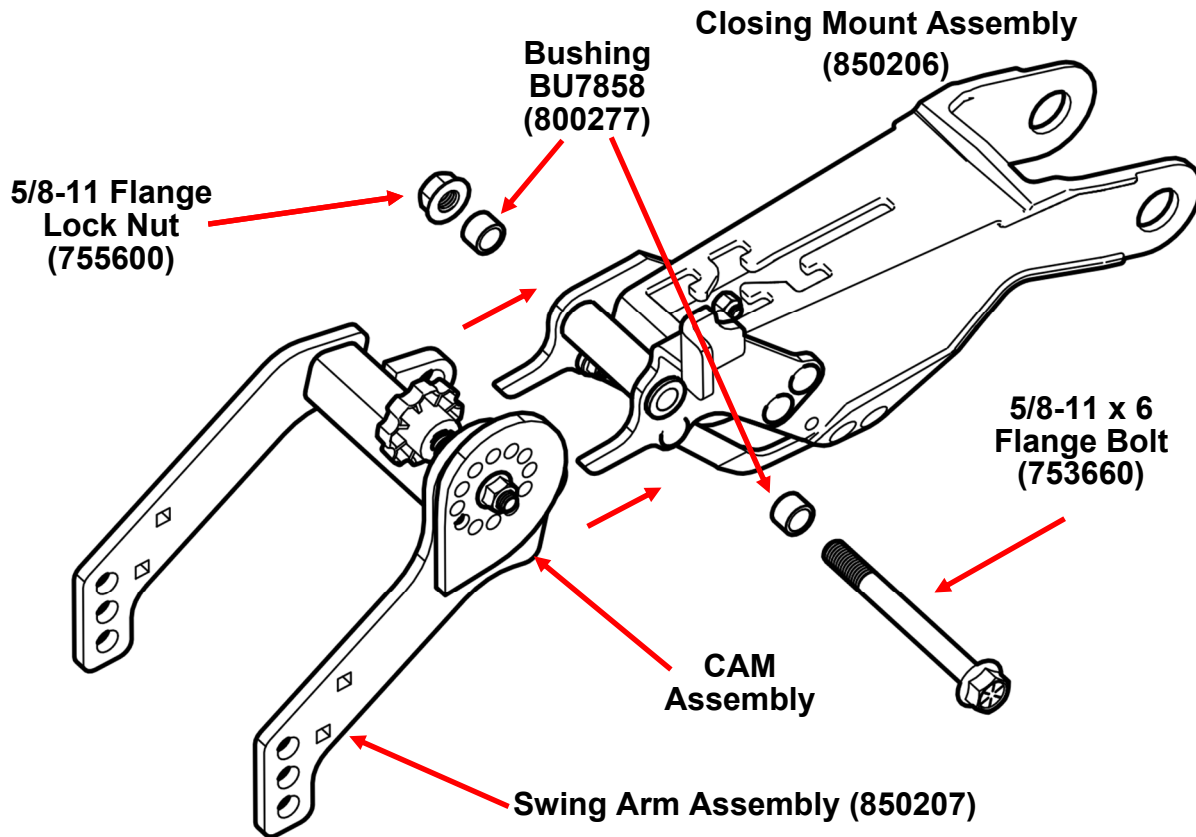
Straps can be mounted on the inside or outside of Closing Frame to help with Closing Wheel Spacing.

Note: If installing on the outside, you will not need the 5/8 Flat Washer (758601) against the Frame as advised in the Closing Wheel Instructions.

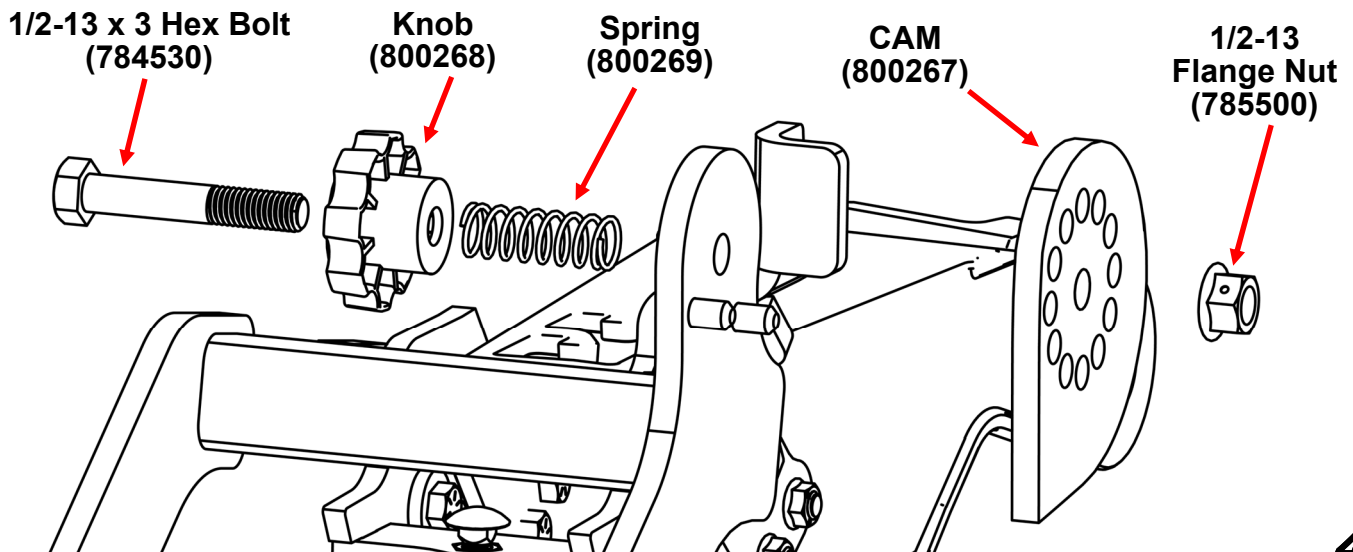


### STEP 3: ATTACH SWING ARMS TO MOUNT

Install Swing Arm Assembly (850207) to 2nd Stage Closer Mount using 5/8-11 x 6 Flange Bolt (753660), Bushings BU7858 x 2 (800277), and 5/8-11 Flange Lock Nut (755600) as shown below.



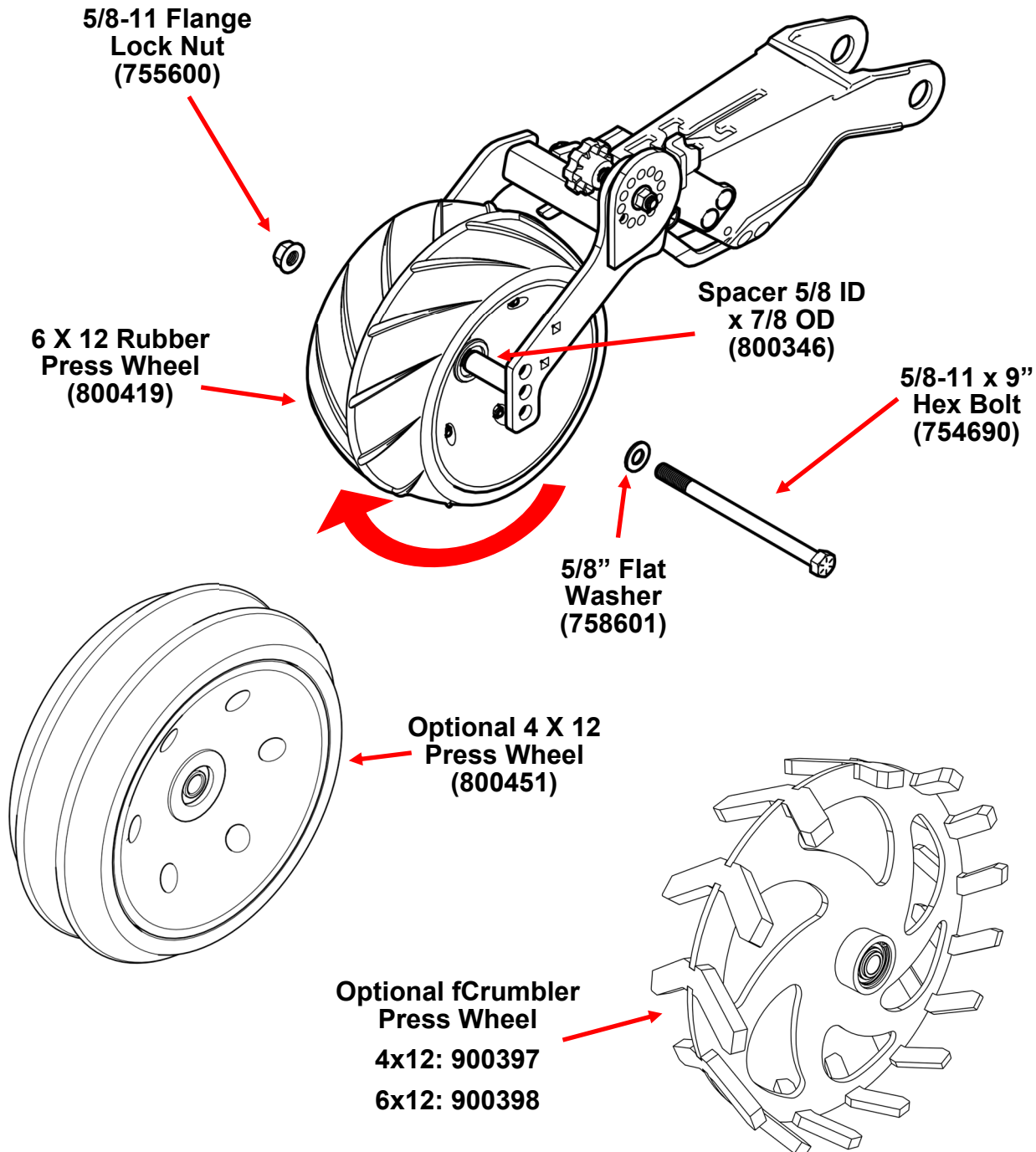
### STEP 4: ATTACH CAM TO SWING ARM



## STEP 5: INSTALL PRESS WHEEL

1. Install Press Wheel (800419 or 800451 (4x12)) to Swing Arm Assembly as shown below with 5/8-11 x 9 Hex Bolt (754690) with Washer, 2 x Press Wheel Spacers (800346), and 5/8-11 Lock Nut (755600). See Step 6 for Adjustment of Press wheel.

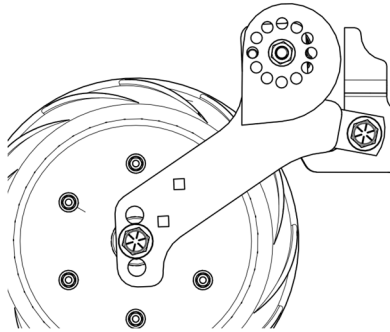
*If 4x12 or 6x12 fCrumbler was purchased, install with the same hardware as shown below.*



## STEP 6 : ADJUST CAM FOR CLOSING WHEEL DEPTH

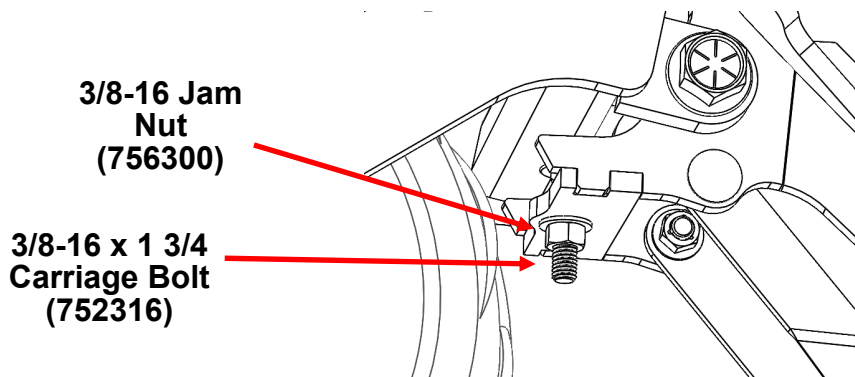
Martin Closing Wheel Cam allows for more adjustment based on your closing configuration. Additionally, the swing arms have 3 holes for vertical adjustment of the Press wheel to change depth.

It is recommended to start initial cam adjustments with the point of the Cam facing down as shown below and with Press wheel in the center hole.



## STEP 7 : ADJUST PRESS WHEEL DEPTH

Set the 3/8-16 x 1 3/4 Carriage bolt to desired height and tighten jam nut to secure. This feature controls how far the swing arm drops when the planter is picked up.

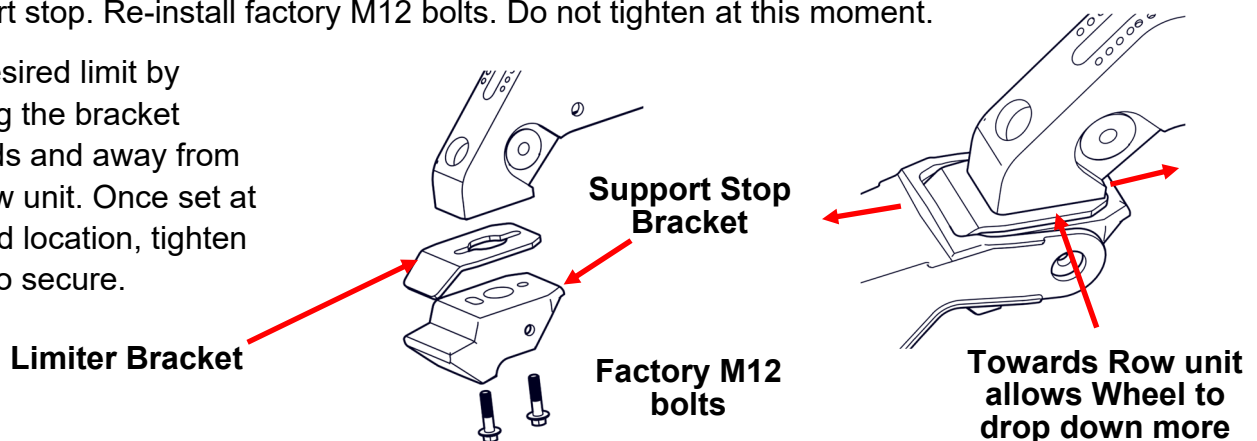


## Optional Drop Down Limiter

In some cases, a drop down limiter bracket may be required to limit how far the closing arm comes down when the row unit is picked up.

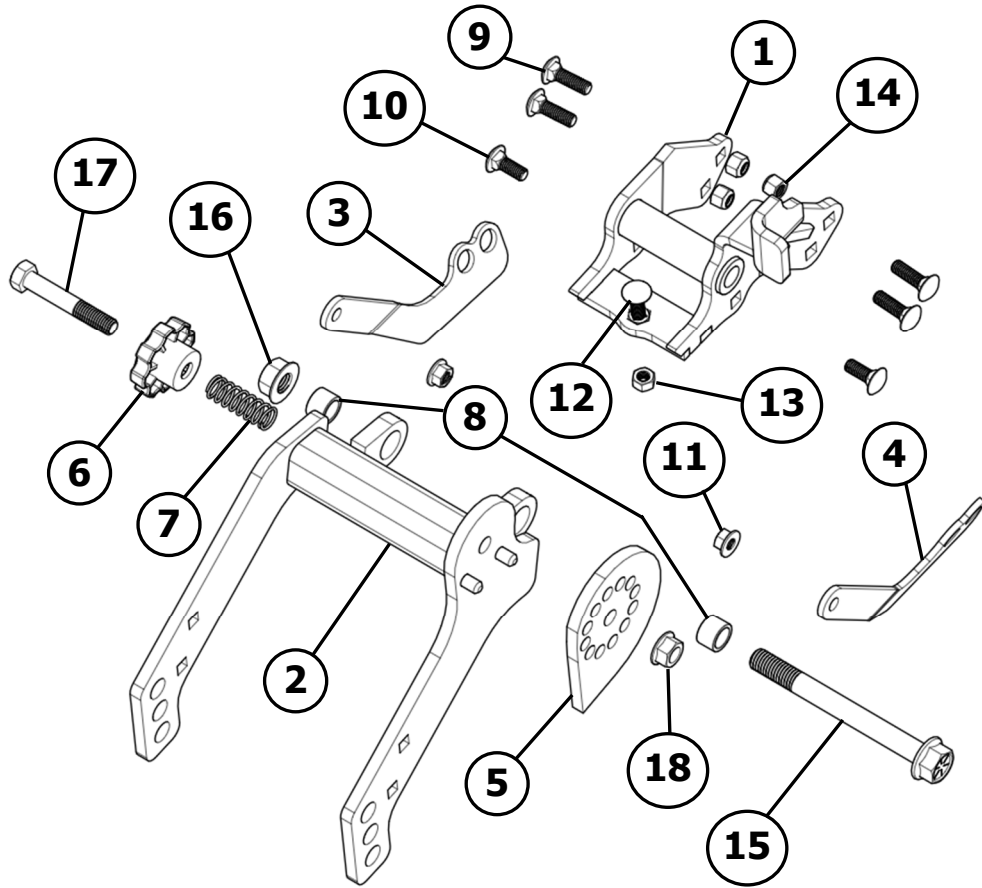
To install, place the Limit Bracket (800823) between the row unit frame and the closing wheel support stop. Re-install factory M12 bolts. Do not tighten at this moment.

Set desired limit by moving the bracket towards and away from the row unit. Once set at desired location, tighten bolts to secure.





## PARTS BREAKDOWN FOR 2ND STAGE CLOSER FOR DEERE (900296)



ITEM NO.	PART NUMBER	DESCRIPTION
1	850206	JD/Hi 2ND STAGE MOUNT
2	850207	2ND STAGE PRESS WHEEL ARM
3	800643	LH MOUNTING STRAP
4	800644	RH MOUNTING STRAP
5	800267 (CA30)	PLATED CAM CA30
6	800268 (CA32)	CAM KNOB
7	800269 (CA34)	CAM SPRING
8	800277 (BU7858)	7/8 X 5/8 PIVOT BUSHING
10	752310 (B5C381)	3/8-16 X 1 HEX BOLT
11	785301	3/8-16 FLANGE LOCK NUT
12	752316 (B5C38134)	3/8-16 X 1.75 CARRIAGE BOLT
13	756300	3/8-16 HEX NUT
15	753660 (B8F58NC6)	5/8-11 X 6 FLANGE BOLT
16	755600 (N58FLN)	5/8-11 FLANGE LOCK NUT
17	784530 (B5M12NC3)	1/2-13 X 3 HEX BOLT
18	785500 (N12CFL)	1/2-13 FLANGE LOCK NUT



**The most trusted name in no-till**  
**Established 1991**

**Martin Industries LLC**

206 Elk Fork Road

Elkton, KY 42220

Telephone: 270-265-5817

E-Mail: [martin@martintill.com](mailto:martin@martintill.com)

[www.martintill.com](http://www.martintill.com)