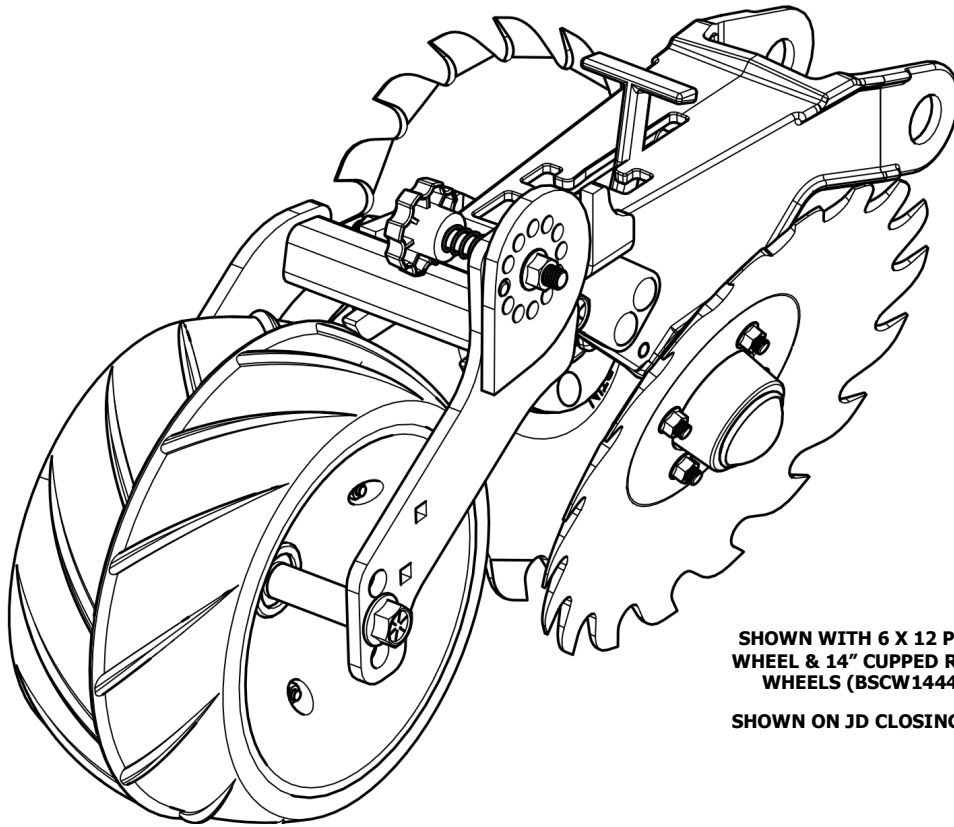


2nd Stage JD/HI Closer

Second Stage Press Wheel for Deere & HI Closing Frames **INSTALLATION INSTRUCTIONS**



SHOWN WITH 6 X 12 PRESS
WHEEL & 14" CUPPED RAZOR
WHEELS (BSCW1444C)

SHOWN ON JD CLOSING ARM



Martin Planter Attachments

Martin Industries LLC

206 Elk Fork Road

Elkton, KY 42220

Telephone: 270-265-5817

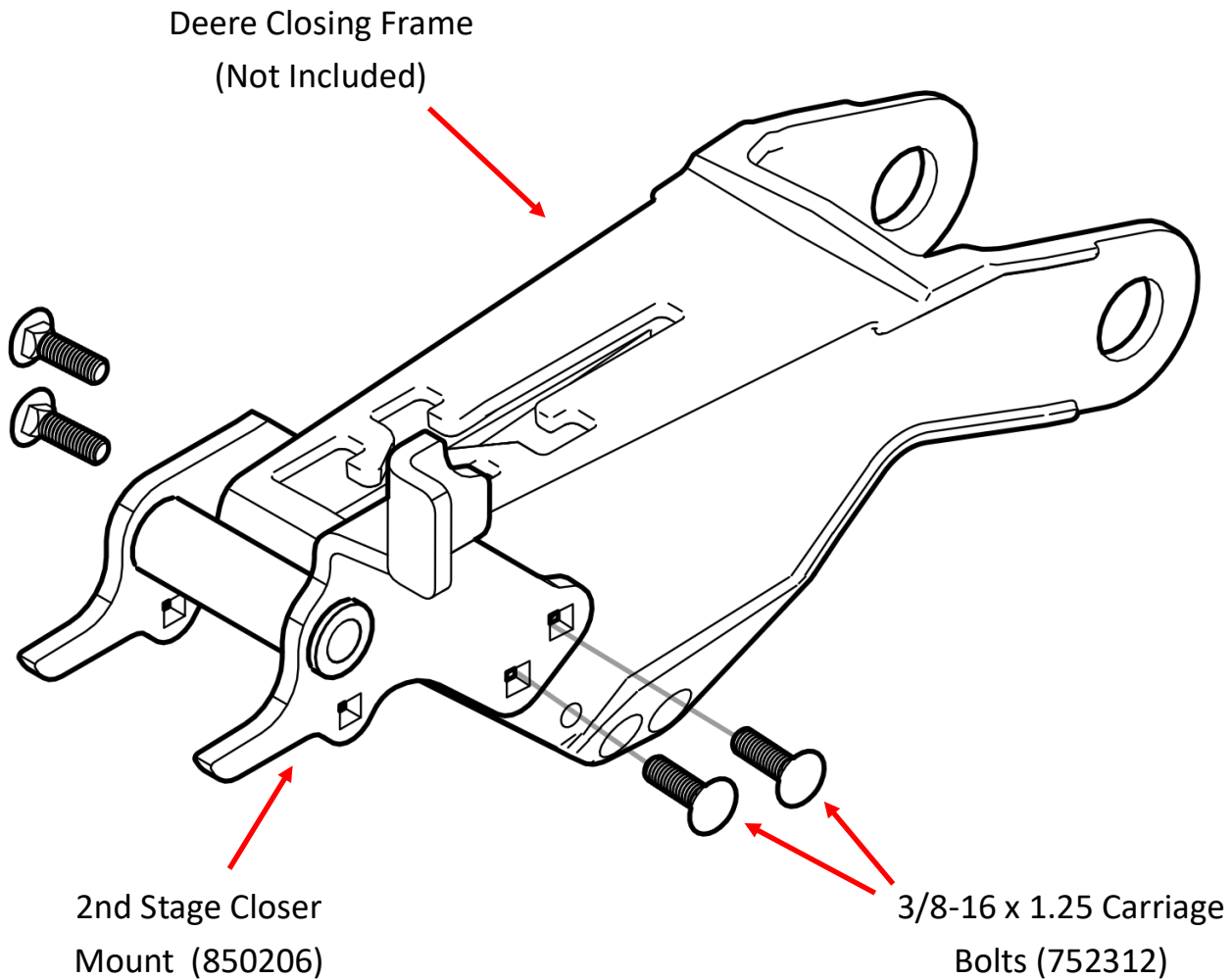
E-Mail: martin@martintill.com

www.martintill.com



STEP 1 : ATTACH TO OEM CLOSING FRAME

Use included 3/8-16 x 1 1/4" Carriage bolts and 3/8-16 Nyloc nuts to mount to Closing Frame using the top holes as shown below.

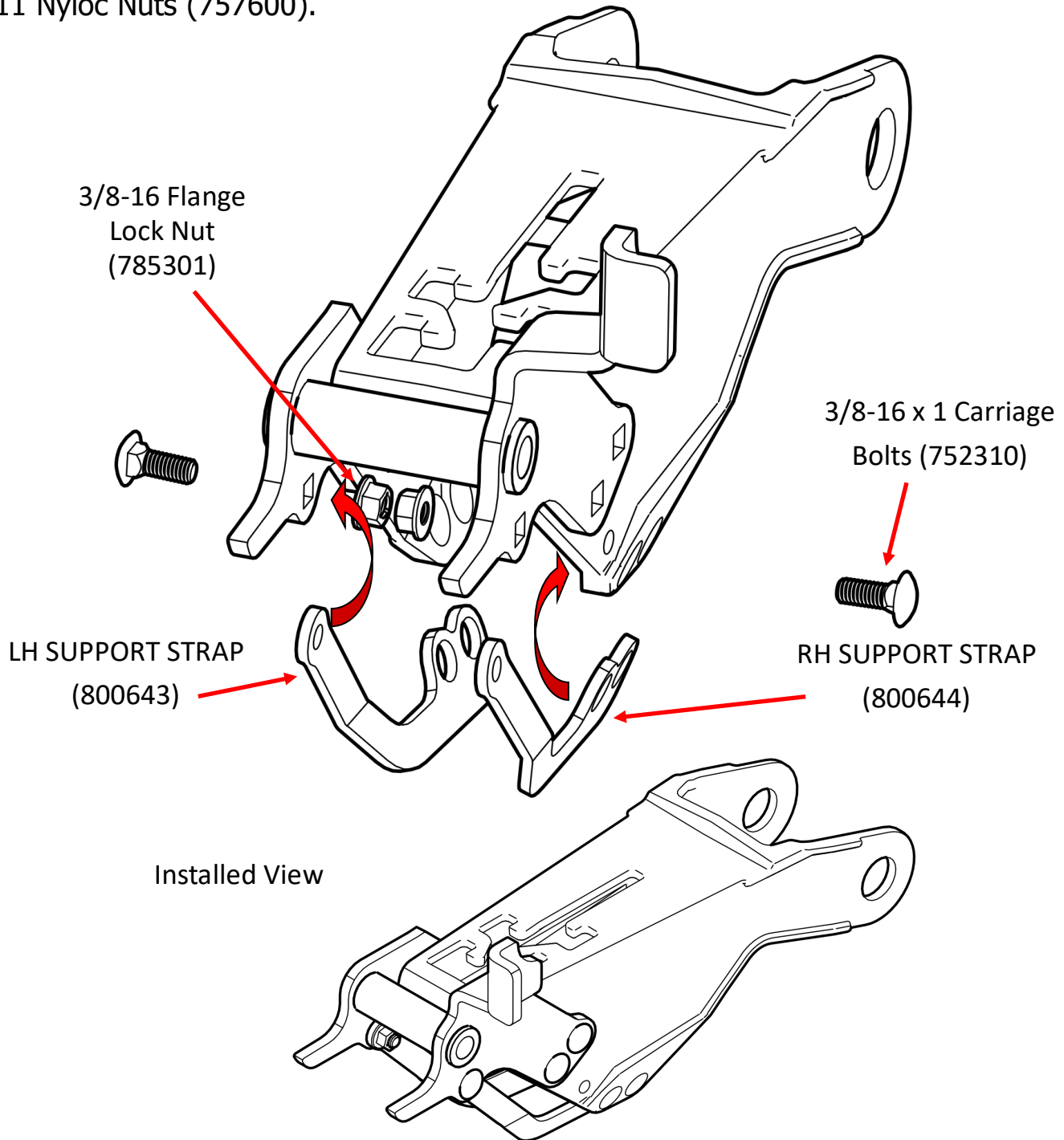


STEP 2: ATTACH SUPPORT STRAPS TO FRAME AND MOUNT

Install Support Straps (800643 and 800644) to previously installed mount (on the inside) and bottom wheel holes in the inside of the John Deere Closing Arm as shown below. Secure straps to the mount with 2 x 3/8-16 x 1" Carriage Bolts and 2 x 3/8-16 Flange Lock Nuts.

With Bottom holes lined up in the Support Straps and the closing frame, install wheels as you normally would (offset or intersecting).

If using Martin Wheels, install wheels with 5/8-11 x 3 3/4" Bolts (754636) and 5/8-11 Nyloc Nuts (757600).



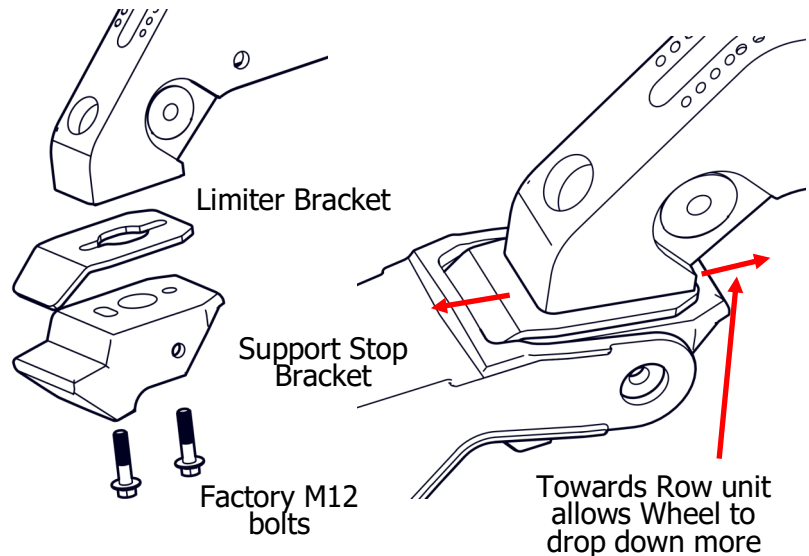
Drop Down Limiter

Before attaching the swing arm assembly, it is advised to install the mount and closing arm to the row unit frame.

In some cases, a drop down limiter bracket may be required to limit how far the press wheel comes down when the row unit is picked up.

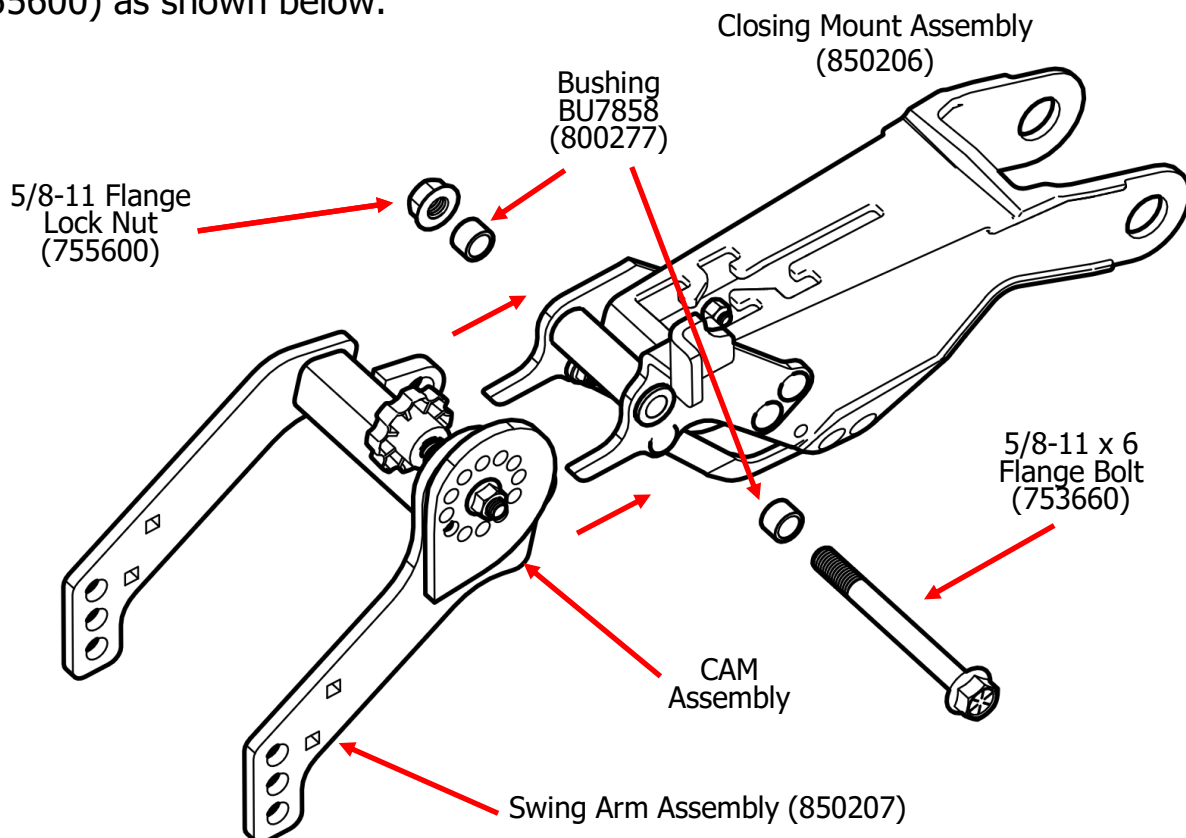
To install the limiter bracket, place the Limit Bracket (800823) between the row unit frame and the closing wheel support stop. Re-install factory M12 bolts. Do not tighten.

Set desired limit by moving the bracket towards and away the row unit. Once set at desired location, tighten bolts to secure.



STEP 3: ATTACH SWING ARMS TO MOUNT

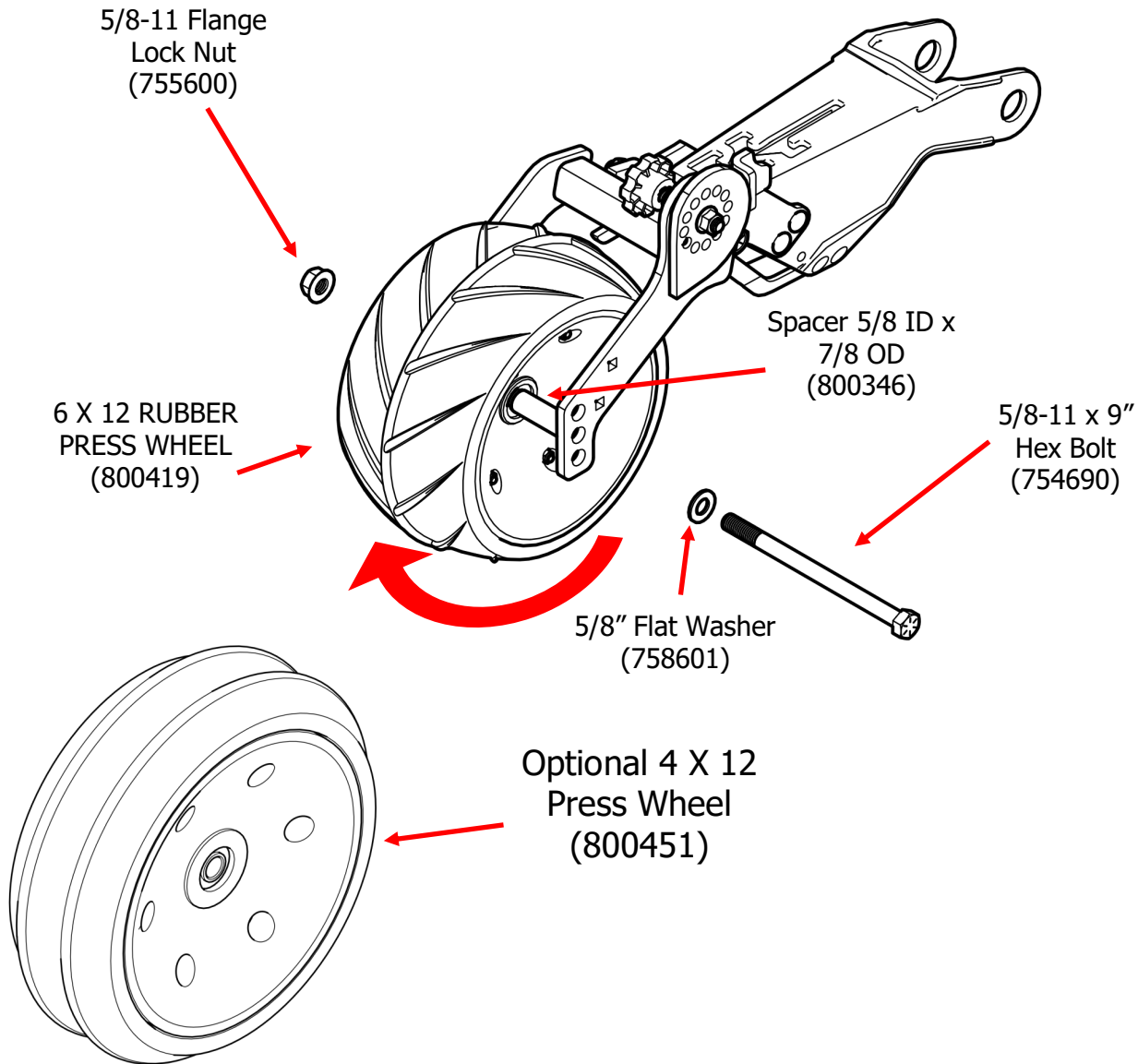
Install Swing Arm Assembly (850207) to 2nd Stage Closer Mount using 5/8-11 x 6 Flange Bolt (753660), Bushings BU7858 x 2 (800277), and 5/8-11 Flange Lock Nut (755600) as shown below.



STEP 3: INSTALL PRESS WHEEL

1. Install Press Wheel (800419 or 800451 (4x12)) to Stage Two Swing Arms as shown below with 5/8-11 x 9 Flange Bolt (753690), 2 x Press Wheel Spacers (800346), and 5/8-11 Lock Nut (755600). *See Step 4 for Adjustment of Press wheel.*

If 4x12 or 6x12 fCrumbler was purchased, install with the same hardware as shown below.

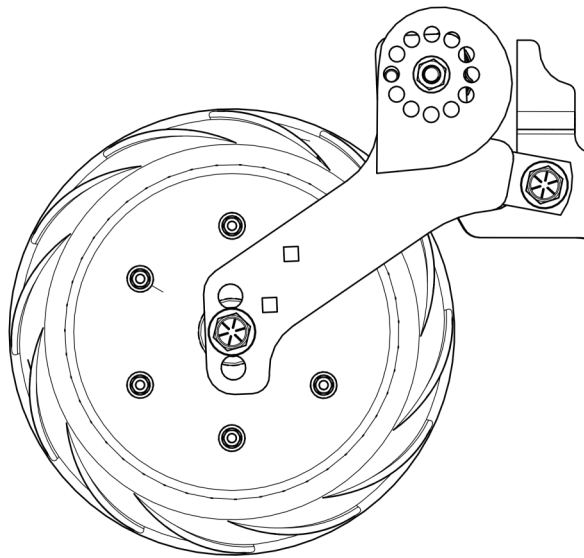


STEP 4 : ADJUST CAM FOR CLOSING WHEEL DEPTH

Martin Closing Wheel Cam allows for more adjustment based on your closing configuration or soil conditions. Additionally, the swing arms have 3 holes for vertical adjustment of the Press wheel to change depth.

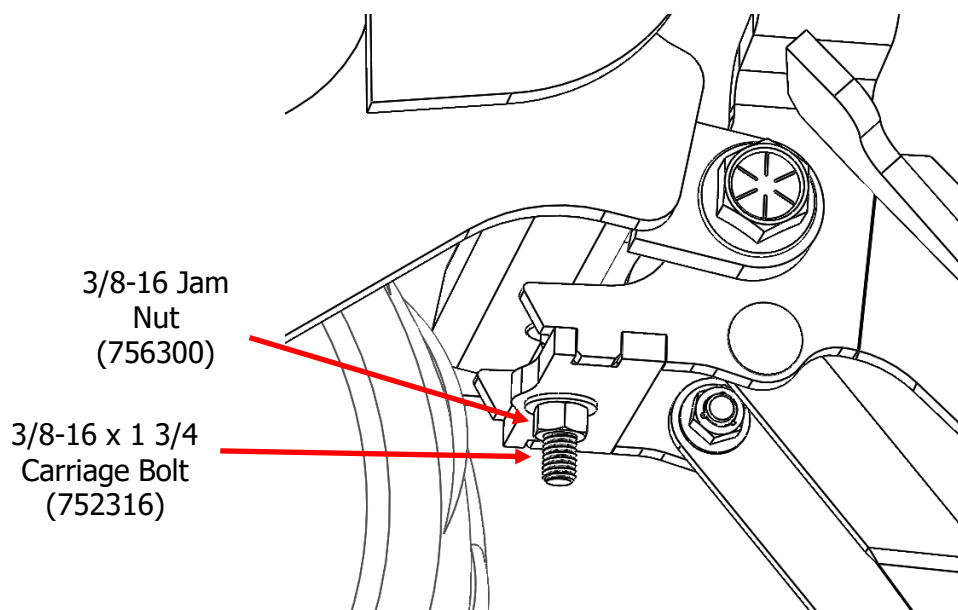
If using Martin 13 inch Spike wheels, it is recommended to run with the Press wheel in the Top hole. When using Martin 14" Cupped Razors or 15 inch Spikes, Press wheel in bottom hole of Swing arms is recommended.

It is recommended to start initial cam adjustments with the point of the Cam facing down as shown below.

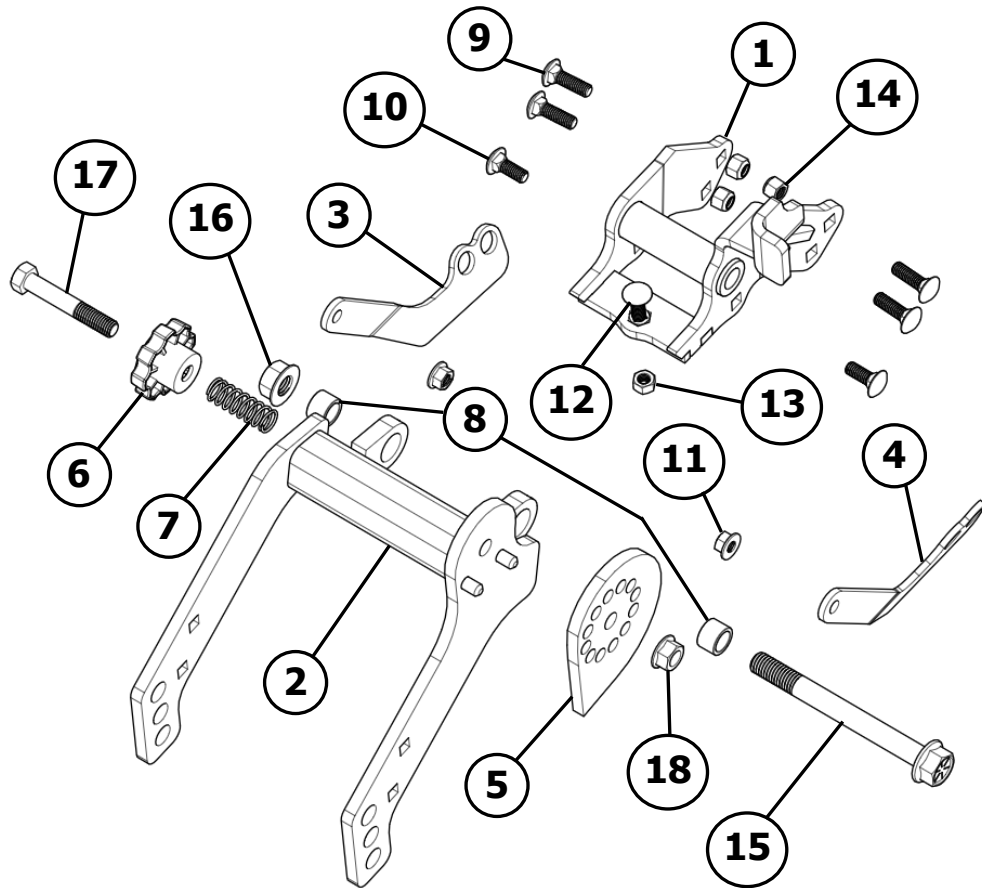


STEP 5 : ADJUST PRESS WHEEL DEPTH

2nd Stage Closers made in Spring 2022 have a press wheel depth adjustment bolt on bottom of 850206 Mount Assembly. Set the 3/8-16 x 1 3/4 Carriage bolt to desired height and tighten jam nut to secure. This feature controls how far the press wheel drops when the planter is picked up.



PARTS BREAKDOWN FOR 2ND STAGE CLOSER FOR DEERE (900296)



ITEM NO.	PART NUMBER	DESCRIPTION
1	850206	JD/Hi 2ND STAGE MOUNT
2	850207	2ND STAGE PRESS WHEEL ARM
3	800643	LH MOUNTING STRAP
4	800644	RH MOUNTING STRAP
5	800267 (CA30)	PLATED CAM CA30
6	800268 (CA32)	CAM KNOB
7	800269 (CA34)	CAM SPRING
8	800277 (BU7858)	7/8 X 5/8 PIVOT BUSHING
9	752312 (B5C38114)	3/8-16 X 1.25 CARRIAGE BOLT
10	752310 (B5C381)	3/8-16 X 1 CARRIAGE BOLT
11	785301	3/8-16 FLANGE LOCK NUT
12	752316 (B5C38134)	3/8-16 X 1.75 CARRIAGE BOLT
13	756300	3/8-16 HEX NUT
14	757300 (N38CNL)	3/8-16 NYLOCK NUT
15	753660 (B8F58NC6)	5/8-11 X 6 FLANGE BOLT
16	755600 (N58FLN)	5/8-11 FLANGE LOCK NUT
17	784530 (B5M12NC3)	1/2-13 X 3 HEX BOLT
18	785500 (N12CFL)	1/2-13 FLANGE LOCK NUT



The most trusted name in no-till
Established 1991

Martin Industries LLC

206 Elk Fork Road

Elkton, KY 42220

Telephone: 270-265-5817

E-Mail: martin@martintill.com

www.martintill.com

VERSION 04/13/2022

1/16/2024