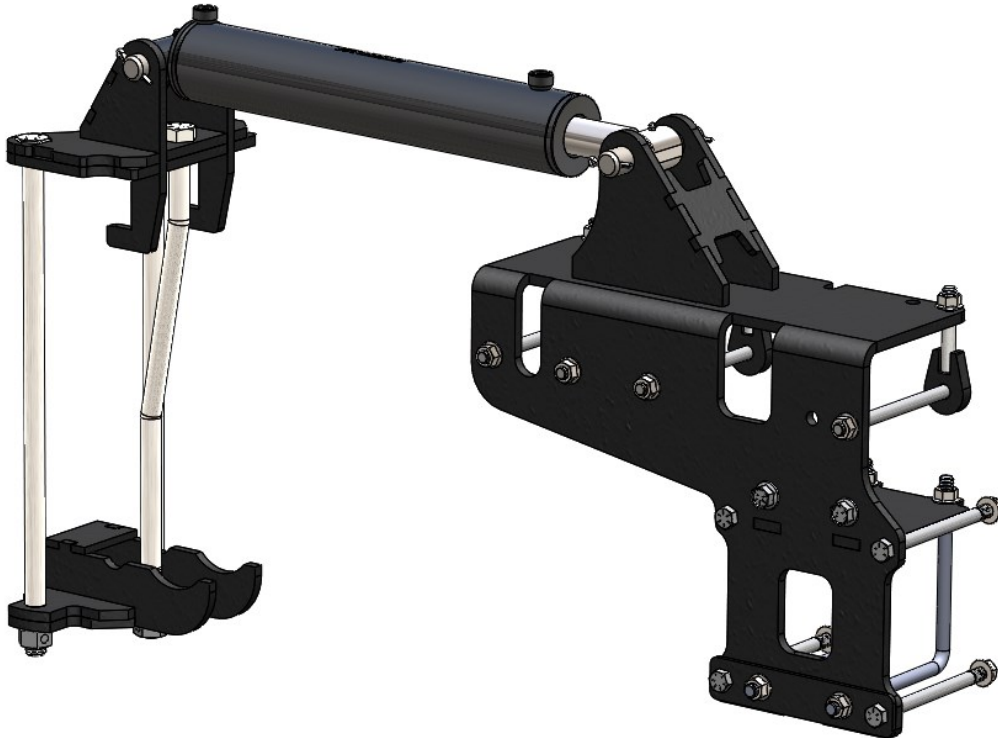


CIH 1255 WTS KIT

(24 ROW/ 30 INCH)

INSTALLATION INSTRUCTIONS



MARTIN PLANTER ATTACHMENTS

Martin Industries LLC

206 Elk Fork Road

Elkton, KY 42220

Telephone: 270-265-5817

E-Mail: martin@martintill.com

BEFORE INSTALLATION BEGINS EVALUTE POSSIBLE CLEARANCE ISSUES

It is important to verify that you do not have any installed accessories that may cause an interference problem when the planter is folded for transport. Mounting of liquid fertilizer tanks , air compressors, or other accessories along the center spine of the planter must be evaluated for interferences before and carefully confirmed after the initial installation upon the first time folding the planter. Every effort has been made to minimize the possibility of interferences, however any customizations or accessories mounted MUST be carefully evaluated by the installer to prevent the possibility of equipment damage.

AREA OF CONCERN FOR INTERFERENCE/
CLEARANCE ISSUES



STEP 1 : SUPPORT THE ROW UNIT AND REMOVE U-BOLTS

Mark the position of the row units on either side of the wing so you can ensure that they are returned to the proper position. Properly support the row units in such a way that they do not fall, and remove the U-bolts attaching the row unit to the toolbar. Suggest taking off planter box, In order to get more work space and more available hook up.

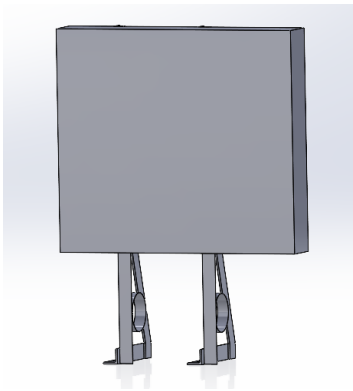


STEP 2 : Removing Hose Clamps, Bracket, and Electrical Cabinet

The Left Wing of the planter has an electrical cabinet you must completely unplug (shown below). It is recommended for safety purposes that the vacuum hose is removed from the rings on the Cabinet base, so that the cabinet can be securely laid out of the way. On the Right Wing of Planter, remove U-bolt (15/16 wrench) and flip over hose bracket out of way. (See below image).

If necessary, remove hose clamps (shown below) on each side of the planter to clear the way for installation using a 9/16 wrench or socket.

Electrical Cabinet (Left Wing)

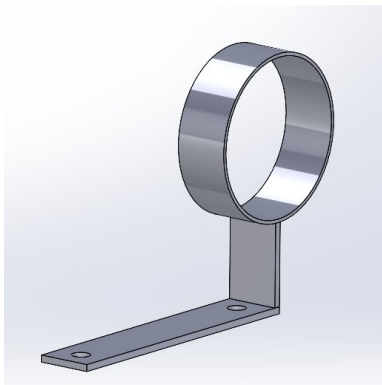


Remove
Plugs

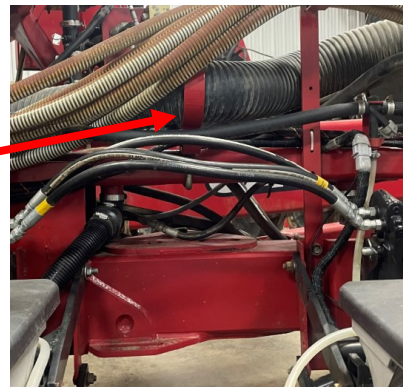
Vacuum
Hose



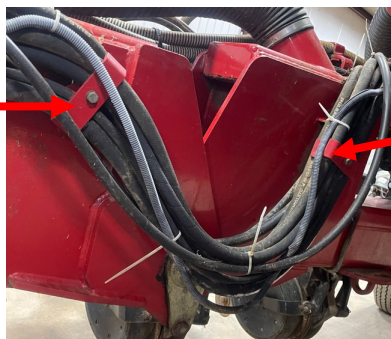
Hose Bracket (Right Wing)



Hose Bracket



Hose Clamp

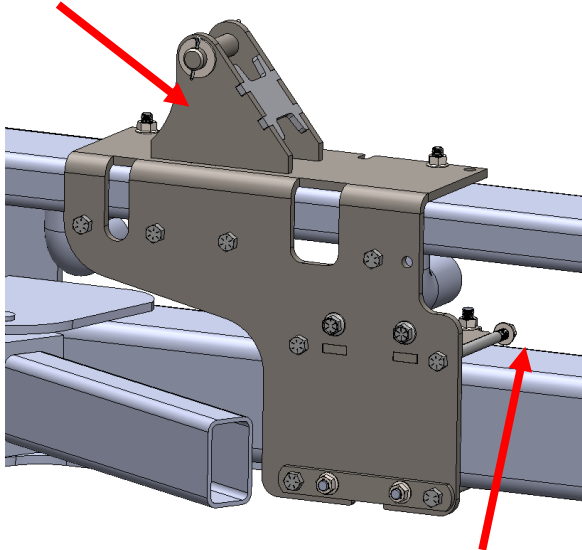


Hose Clamp

STEP 3 : INSTALL THE WING SECTION PLATE

Install part 850295 by dropping it down behind hoses. Row unit will be mounted on bottom portion, so part should be slid so that row unit can be reinstalled at original location.

850295

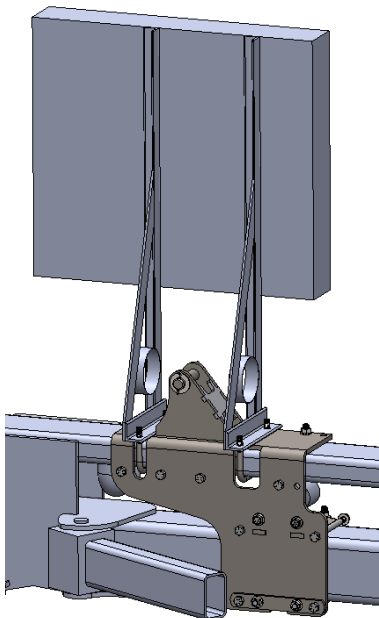


Row Unit Location



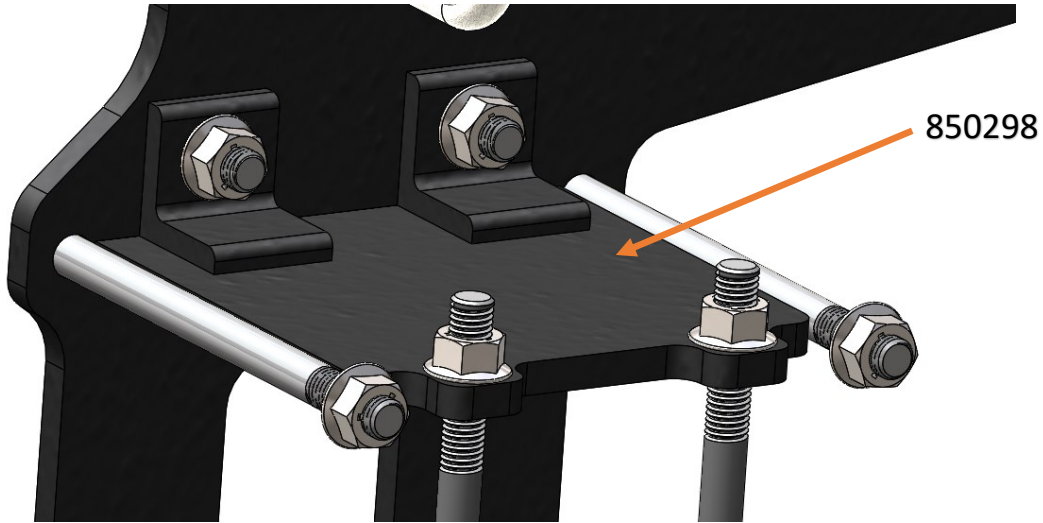
STEP 4 : RE-MOUNTING U-BOLT FOR HOSE BRACKET

Take original U-bolt and place into slots on Electrical Cabinet and Hose bracket. Sliding plate out sideways just enough to slide u bolt back into place. Then set parts back in spot and hand tighten nuts as shown below.



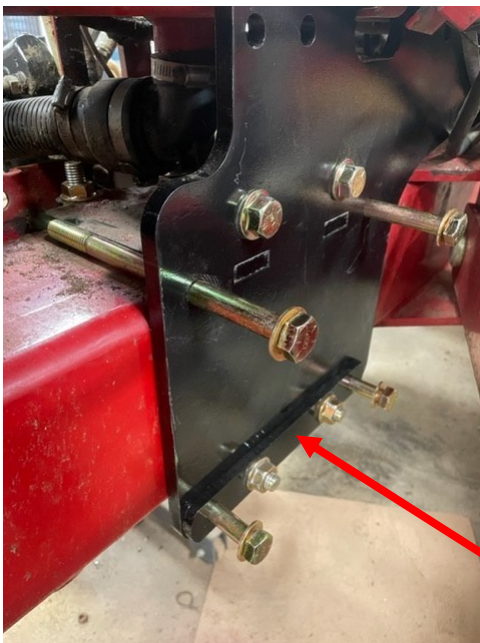
STEP 5: INSTALLING PLATE (850298)

1. Take plate (850298) and slide tabs into slots in Plate (850295). May be necessary to lift plate and align slots for the tabs to slide in, then insert bolts from the outside wall of 850295. Fully tighten until tabs are flush with slots.
2. Place L-bolt from underneath going up and hand tighten nut. Slide other end of L-bolt into slot and slide outward as shown below.



STEP 6: INSTALLING BRACKET (800843)

1. Place bracket (800843) by twisting L-bolts till both sides align and slide on.
2. Slide in 4 bolts that attach to row unit back Plate (W-plate). Two of the Top bolts and one of the bottom bolts will be 9" long; however, bottom bolt that runs through the hose holding bracket on the row unit will be 10" Long.



800843 Bracket

STEP 7 : RE-MOUNT THE ROW UNITS

Verify the proper location of the row unit. Slide plate into correct position, so the row unit aligns up. Then fully tighten all four row unit bolts and all four nuts for L-bolt.



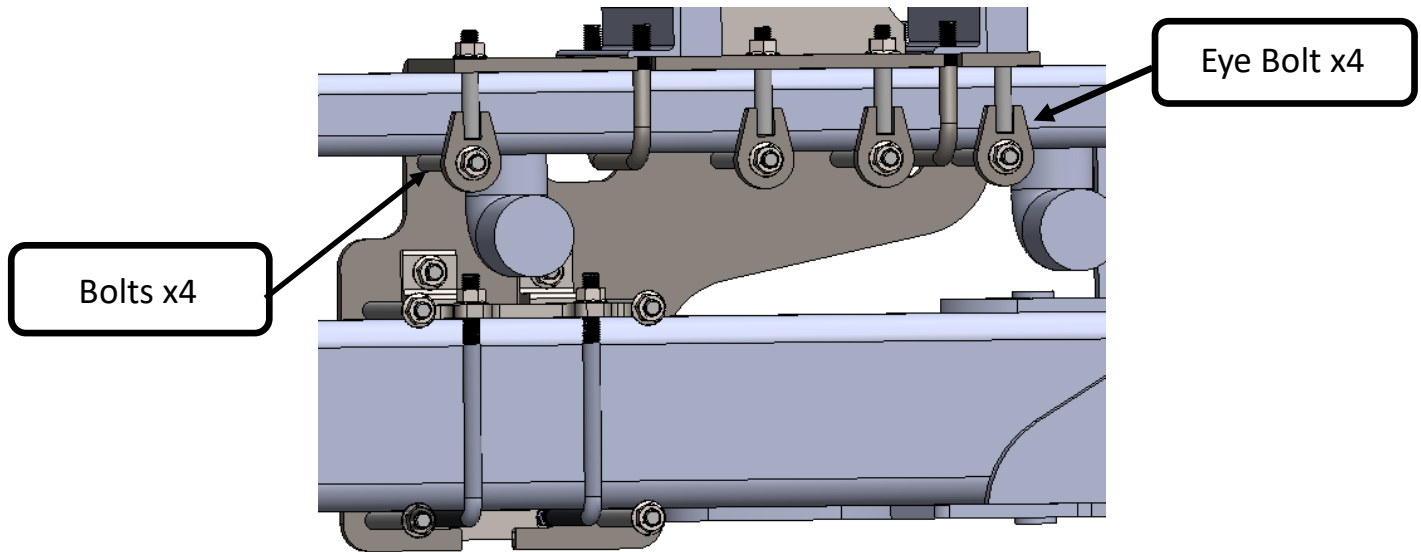
Longer Bolt (10" Long)

STEP 8 : TIGHTENING UP HOSE BRACKET/ELECTRICAL CABINET AND HOSE CLAMP

Tighten Bolts that were hand tight only on the Electrical Cabinet and Hose Clamps from previous steps.

STEP 9: PLACING EYE BOLTS (850339)

1. Place all four eye bolts (850339), in place and hand tighten just enough to catch.
2. Slide bolt through the eye bolts and the front of plate and hand tighten nuts . Using four 5/8-11 x 9 Hex bolts (provided).
3. Next, tighten from the top the eye bolt fully which will lead to the bolt sucking up to the 3x7 tube then tighten straight bolt do to all four eye bolts. Using a 15/16 socket or wrench.



STEP 10: CHECK FIT BEFORE INSTALLING TOP PLATE (850292)

Place part (850292) on top 3x7 tube and hooks underneath as shown below. The hook will be tight due to the variety of the tube if not able to tap into place flush by using a rubber hammer take part back off. Grind just enough to where using a rubber hammer will be able to tap part into place, using a rubber hammer will know its tight and will not raise any when cylinder allows pressure. (BEFORE TAPPING INTO PLACE BE SURE TO DO NEXT STEP).



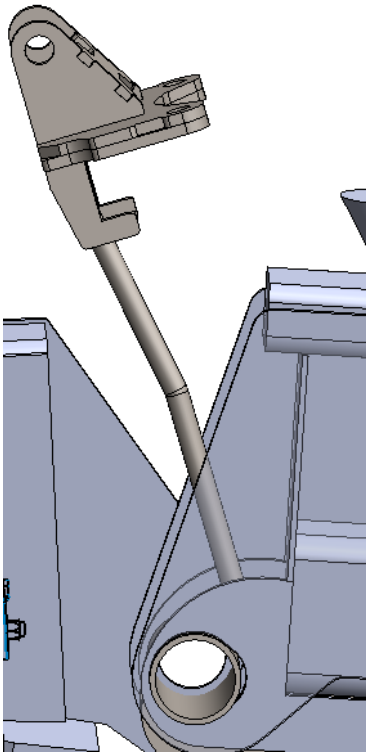
STEP 11: INSTALLING BENT BOLT (709085)

Slide the bent bolt (709085), into the center front hole. You will have to twist to make it fall right in.



STEP 12: INSTALLING PART (850292)

Place part (850292), in at angle so the bolt will go behind the pivot point, (As shown on picture). Tap with rubber hammer until flush against 3x7 tube. Drop both 25 inch bolts into back holes.



(ONCE FINISHED)



STEP 13: INSTALLING PART (850293)

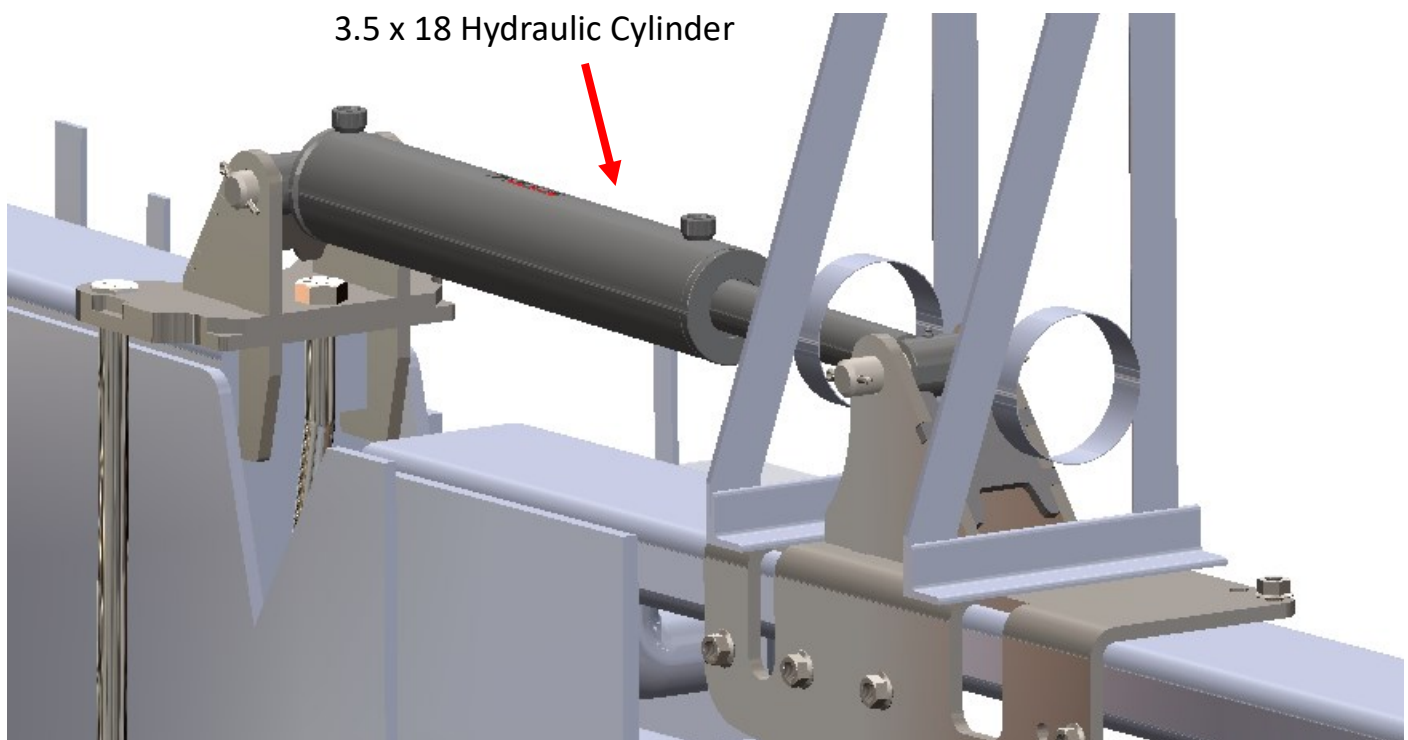
Take bottom plate (850292), and place where the gusset will catch and hold the pivot point and hand tight the nuts just enough to hold in place and take an impact and hold the center bolt on top to keep from moving and slightly tighten first so it snugs the gusset and pivot point tightly. Then slightly tighten the other bolts and come back to center and fully tighten all bolts.



STEP 14 : ATTACH THE HYDRAULIC CYLINDERS

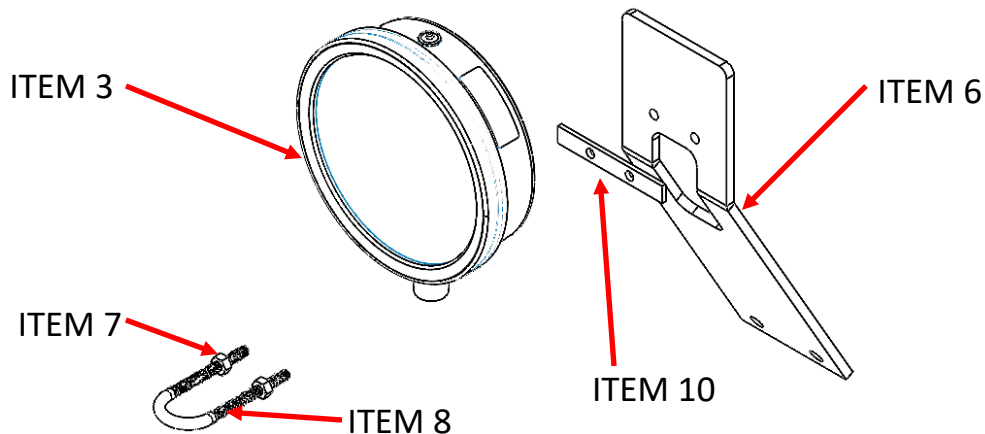
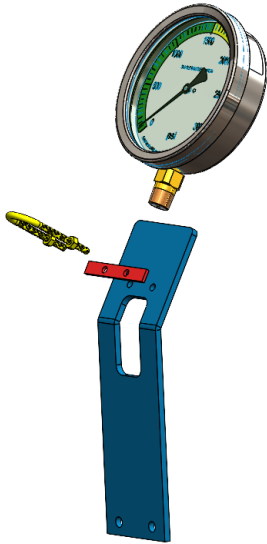
Install the cylinders to the bracket assemblies using the supplied clevis and cotter pins. The cylinder should be installed so that the base end hydraulic port is facing the rear of the planter on the right side.. The cylinder's base end must be attached to the bracket of the center section of the planter for the WTS system to work properly . Install the brass breather vent (800192) on the Gland port (rod end) of the cylinder to allow venting of the gland side during operation. Note that the mounting configuration of the cylinders places the vent facing downward to prevent water entrapment.

Cylinder will be installed through the Vacuum Hole Rings in the Electrical Cabinet on the Left Wing as shown below. Vacuum Hose will need to be rerouted when reinstalled.



STEP 15: INSTALL GAUGE

1. Mount the gauge as close to the hitch area as possible so it can be easily viewed while in operation. It comes with a black bracket that can be bolted to the main frame on JD. If your planter does not have this mounting location you will need to fabricate something to hold the gauge.
2. When installing, make sure to place the shim as shown to prevent vibration.

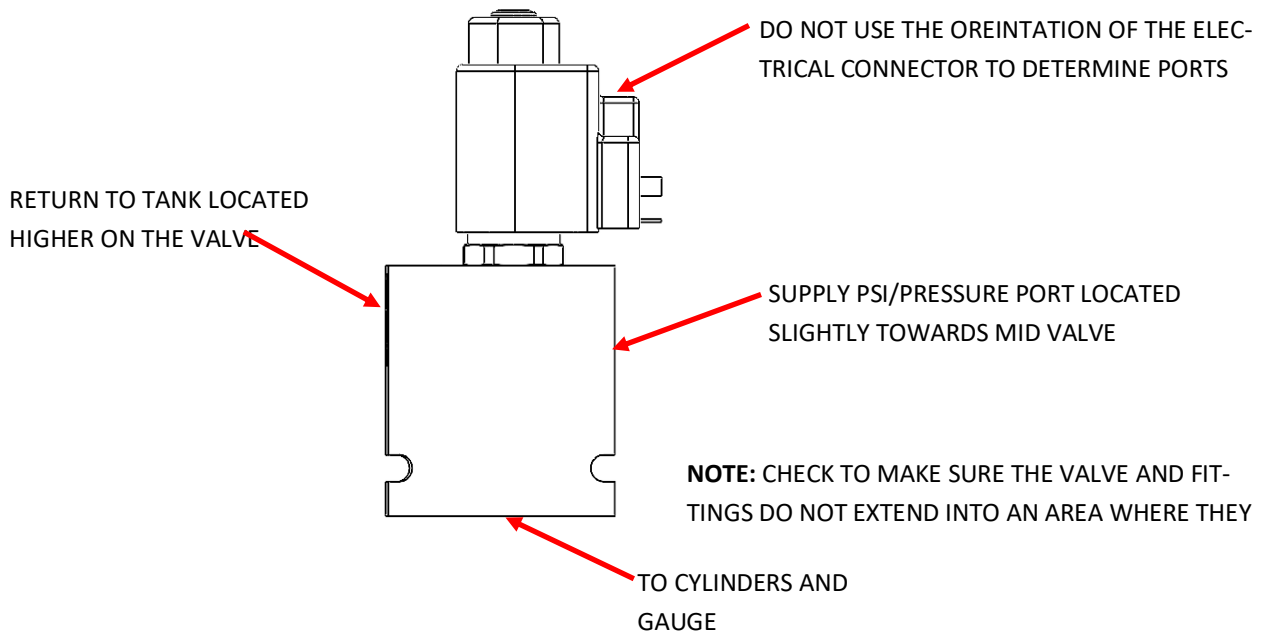
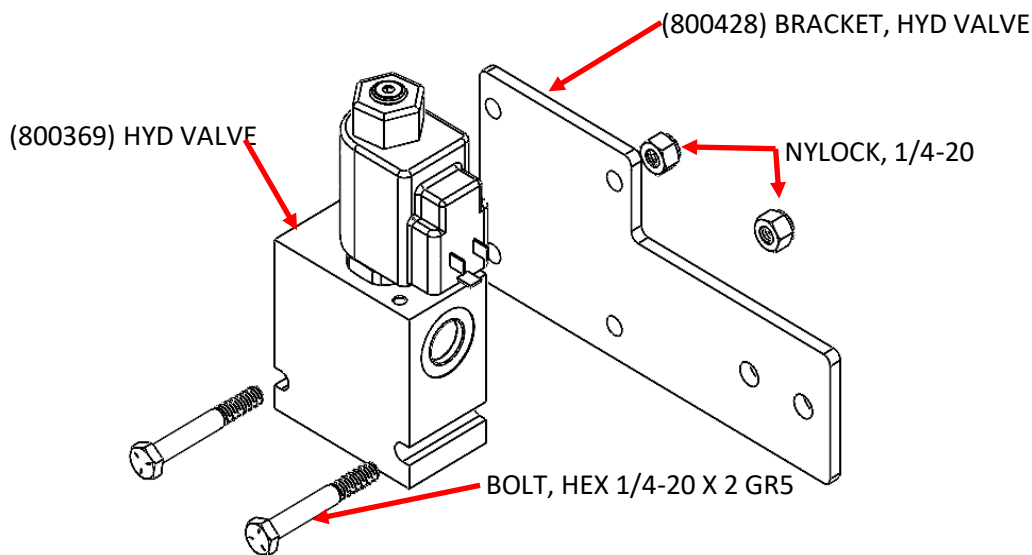


ITEM NO.	PART NUMBER	DESCRIPTION	QTY.
3	800458	GAUGE,0-300 PSI ,MARTIN TILL	1
6	800660	GAUGE MOUNT	1
7	709052	1/4-20 X 1-3/8 U BOLT	1
8	757100	NUT,NYLOCK,1/4-20	2
10	800875	SHIM, WTS GAUGE MOUNT	1

STEP 16: INSTALL 800369 HYDRAULIC VALVE

Due to the unique nature of the installations on each planter the hoses are not supplied with this kit and it is up to the installer/owner to properly route and secure the hoses according to the space available and the accessories installed on each particular planter. The use of 5000 psi rated hose is strongly recom-

Your kit will be supplied containing a high quality hydraulic valve assembly. Due to availability, the brand may be different from what is shown. It is important to note the port positions and functions are the same on all Martin Till valves however the markings may vary. The supplied valve may be mounted in any desired location but typically would be installed in the center of the planter to reduce hose



Notes

STEP 17: HYDRUALIC CONNECTIONS

There are two options for connection of the weight transfer system to your tractor. When you want the system active determines which of the two options will work best for your application. Note: All hydraulic returns must be unobstructed. Due to the unique nature of the installations on each planter, the hoses are not supplied with this kit and it is up to the installer/owner to properly route and secure the hoses according to the space available and the accessories installed on each particular planter. The use of 5000 psi rated hose is strongly recommended.

Option 1: (recommended)

Weight transfer system is active while in plant mode only (Recommended). Frame pressure at the CCS fan turns on and off with the CCS fan on JD. CIH maintains pressure at the fan. **Note: Do not connect the return to the motor case drain as this may cause seal damage.**

Option 2: (Only with Power Beyond)

Attach the hydraulic supply and return to Power Beyond. **Also see 900440 Weight Transfer System Control instructions**

OPTION 1: HYDRAULIC CONNECTIONS (Recommended) (See page 16)

1. **Hydraulic supply:** Connect to "Frame Supply" prior to the CCS fan speed control. (Suggest using #8 JIC running tee). See instructions 900440 Weight Transfer System Control.
2. **Hydraulic return:** Connect to "Frame Return". Suggested that you splice into the system after the oil cooler at the CCS fan. It is important that return to tank path is completely unrestricted/unobstructed.

WARNING: Do not use the motor case drain for return hydraulics, this routing will damage your seals.

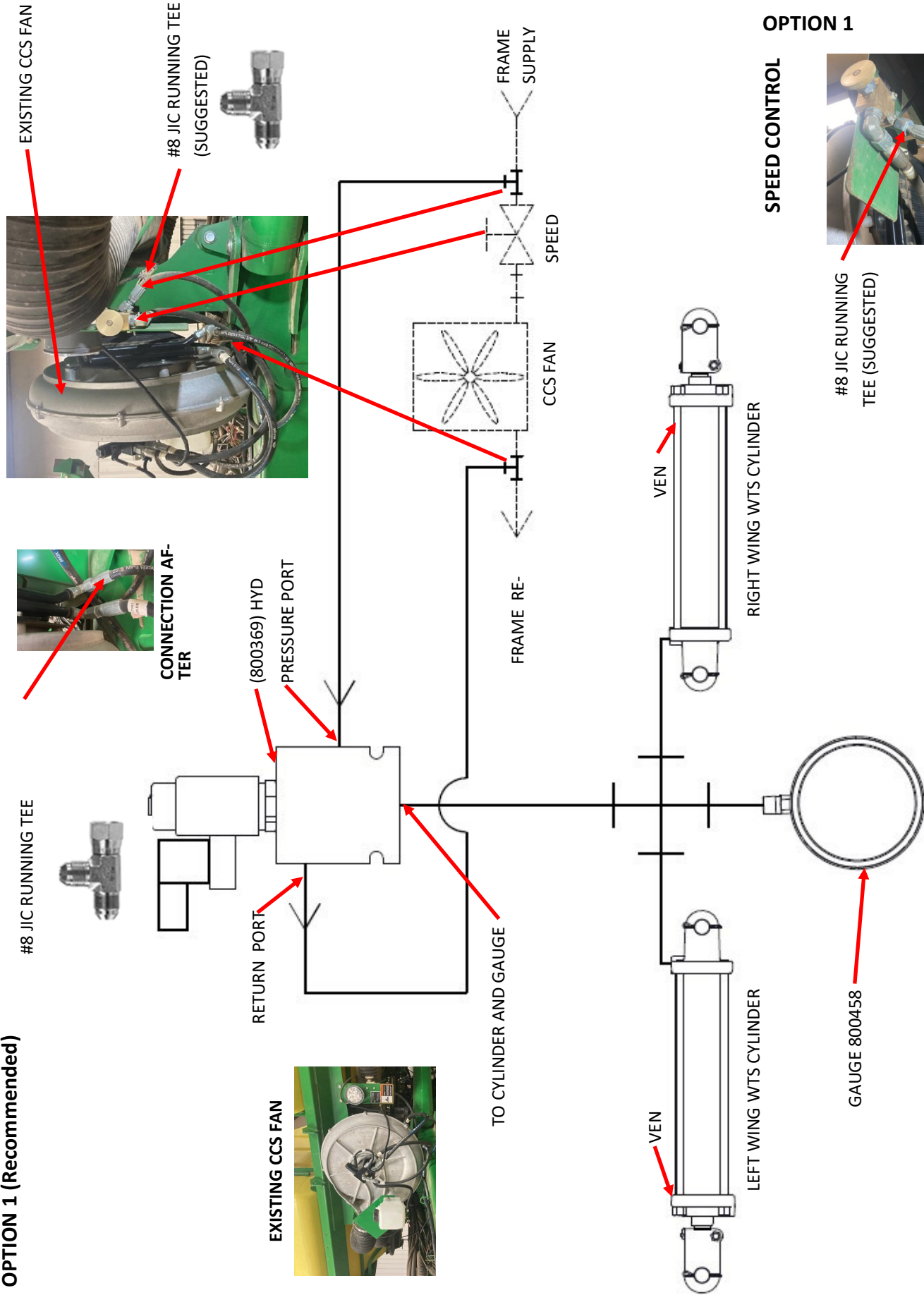
OPTION 2: HYDRAULIC CONNECTIONS (See page 17)

1. Connect to supply at Power Beyond. This will provide for constant power. Operator must remember to turn cab controller off while folding. Also see 900440 Weight Transfer System Control instructions
2. Connect to return at Power Beyond. Return to tank must be unobstructed

WARNING:

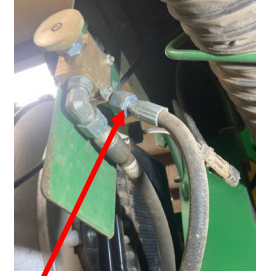
Wing VAC fan, not recommended. SCV must be either in continuous or float at all times. Failure to use the correct settings will cause the system to build Max PSI while the planter is folded.

OPTION 1 (Recommended)



OPTION 1

SPEED CONTROL



#8 JIC RUNNING TEE (SUGGESTED)

Do not return thru motor case drain. Seal damage will occur!

OPTION 2

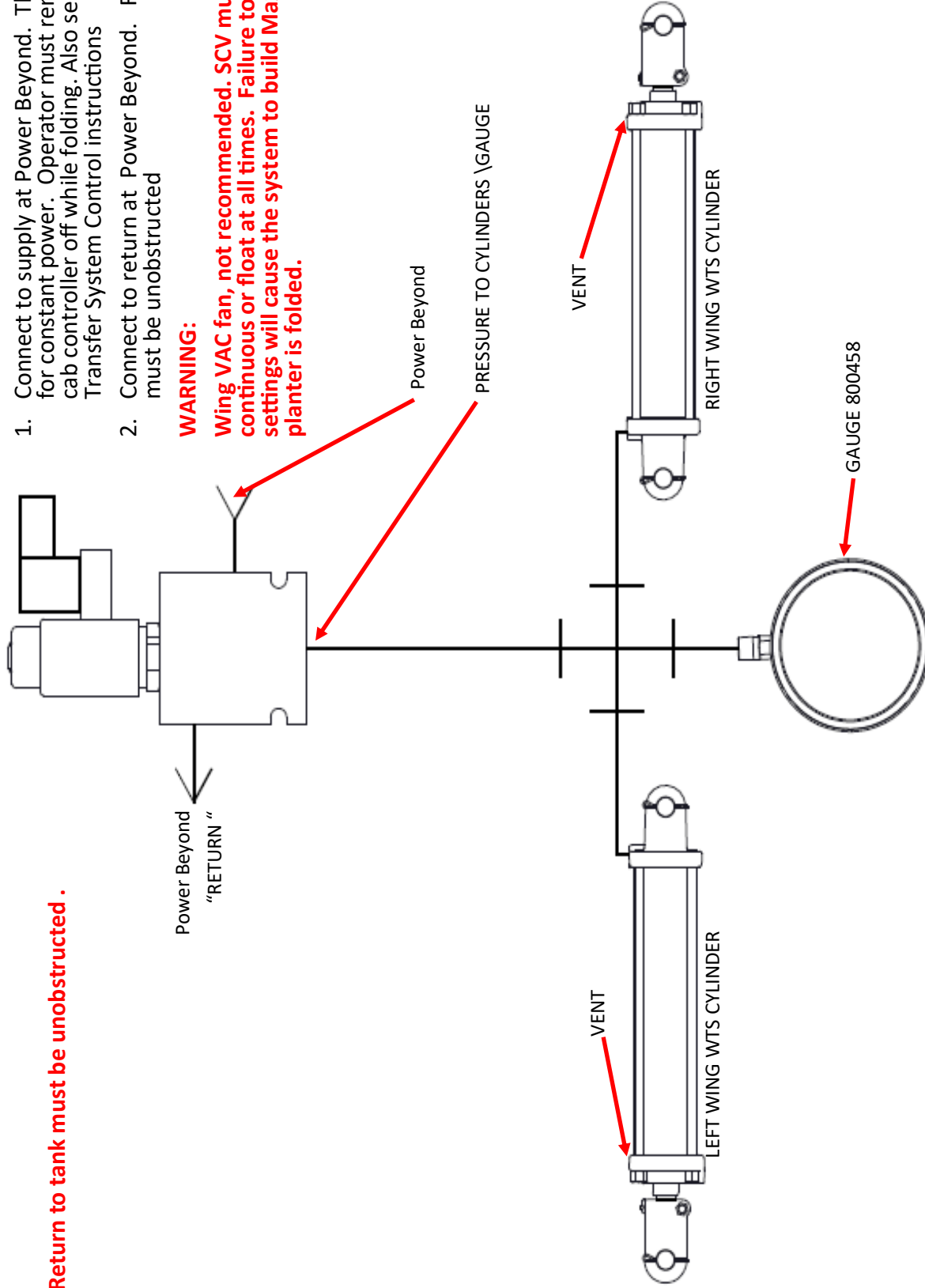
Return to tank must be unobstructed .

OPTION 2: HYDRAULIC CONNECTIONS

1. Connect to supply at Power Beyond. This will provide for constant power. Operator must remember to turn cab controller off while folding. Also see 900440 Weight Transfer System Control instructions
2. Connect to return at Power Beyond. Return to tank must be unobstructed

WARNING:

Wing VAC fan, not recommended. SCV must be either in continuous or float at all times. Failure to use the correct settings will cause the system to build Max PSI while the planter is folded.



OPTION 2

Do not return thru motor case drain. Seal damage will occur!

Notes

Notes



The most trusted name in no-till
Established 1991

Martin Industries LLC

206 Elk Fork Road

Elkton, KY 42220

Telephone: 270-265-5817

E-Mail: martin@martintill.com