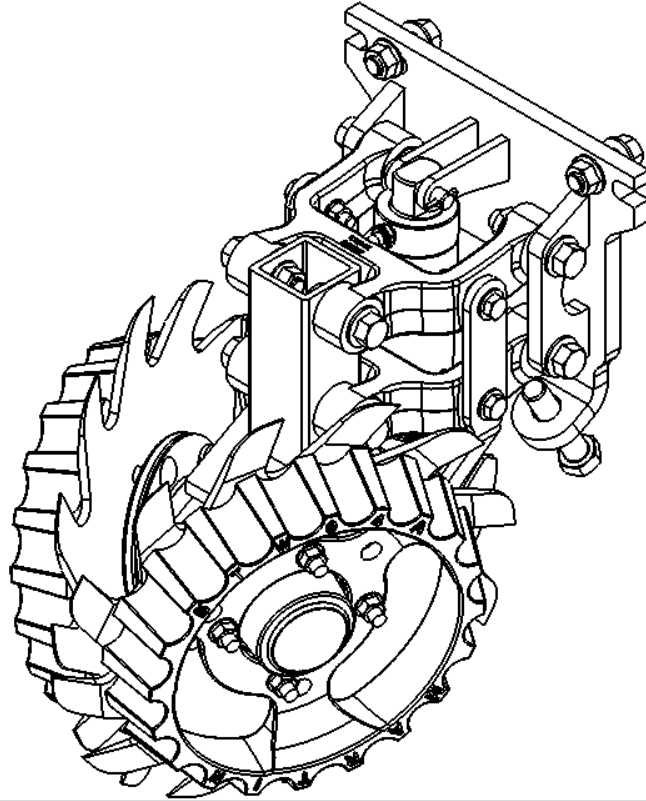


ACCR 1345

PARALLEL ARM COMPACT CLEAN RIDE ROW CLEANER

INSTALLATION INSTRUCTIONS



SHOWN WITH OPTIONAL
SmartClean CYLINDER
(SC-CYL-2X2) and
RTW14125-L/R4
Razor Wheels



Martin Planter Attachments

Martin Industries LLC

206 Elk Fork Road

Elkton, KY 42220

Telephone: 270-265-5817

E-Mail: martin@martintill.com

www.martintill.com

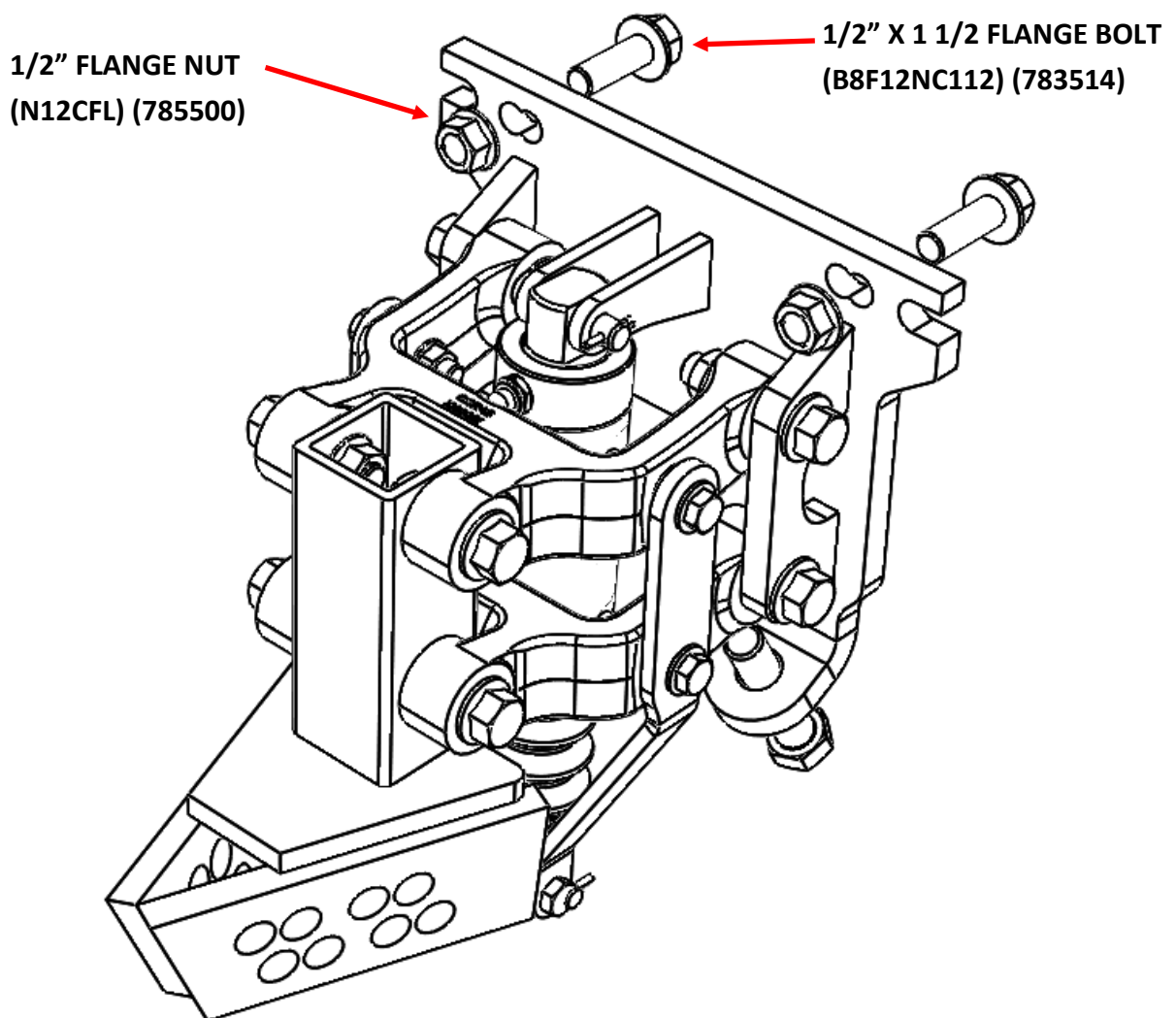


VERSION 01/09/2020

STEP 1 : ATTACH THE MOUNT TO THE PLANTER

The mount includes different hole patterns (four holes for each hole pattern) for different planters. Find the right hole pattern that matches your planter's hole pattern. For CaseIH 1200 series Planters, refer to page 9 for L shape brackets installation instruction before this step.

Using four 1/2" X 1 1/2" **OR** 1/2" X 2" bolts, depending on the row unit base plate thickness, attach the Mount and torque the lock nuts to 55 ft-lbs. Hardware must be installed as shown in the picture below.



STEP 2 : DETERMINE THE BEST WHEEL CONFIGURATION FOR YOUR SOIL CONDITIONS

Three different wheel configurations are shown from the top views.

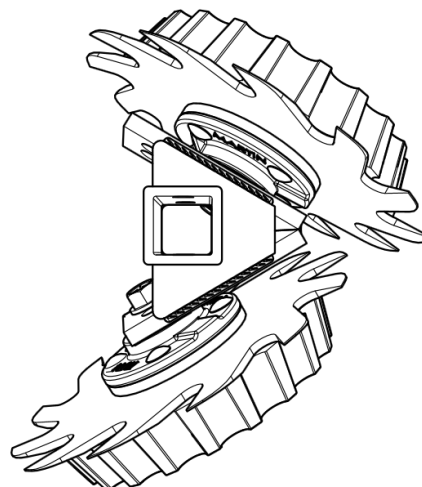
OPTION A: OFFSET

ONE WHEEL IN REAR HOLE (Hole number 4)

ONE WHEEL IN FRONT HOLE (Hole number 1)

The staggered configuration allows the wheels to turn more easily in loose soil.

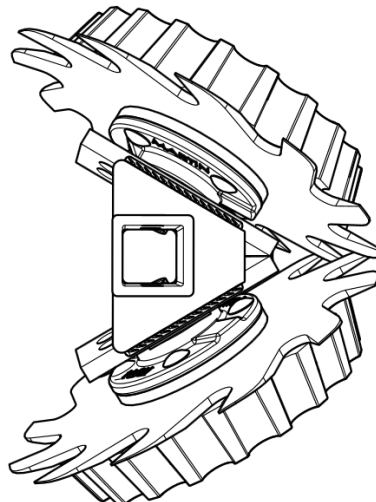
With this staggered configuration, we suggest running the left wheels in the rear hole on the half of the planter and the right wheels in the rear hole on the other half of the planter (when viewed from behind).



OPTION B: INTERSECTED

BOTH WHEELS IN CENTER HOLE (Hole number 2)

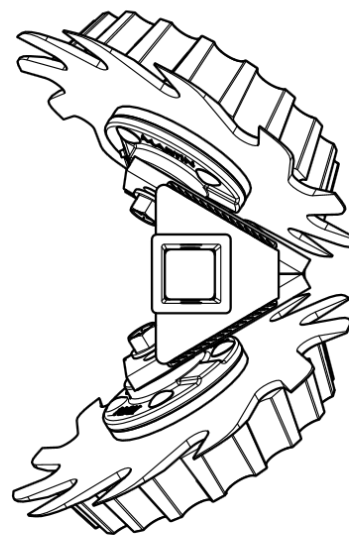
Both wheels forward provides maximum cleaning effect and the interlocked wheels till the middle of the seed row.



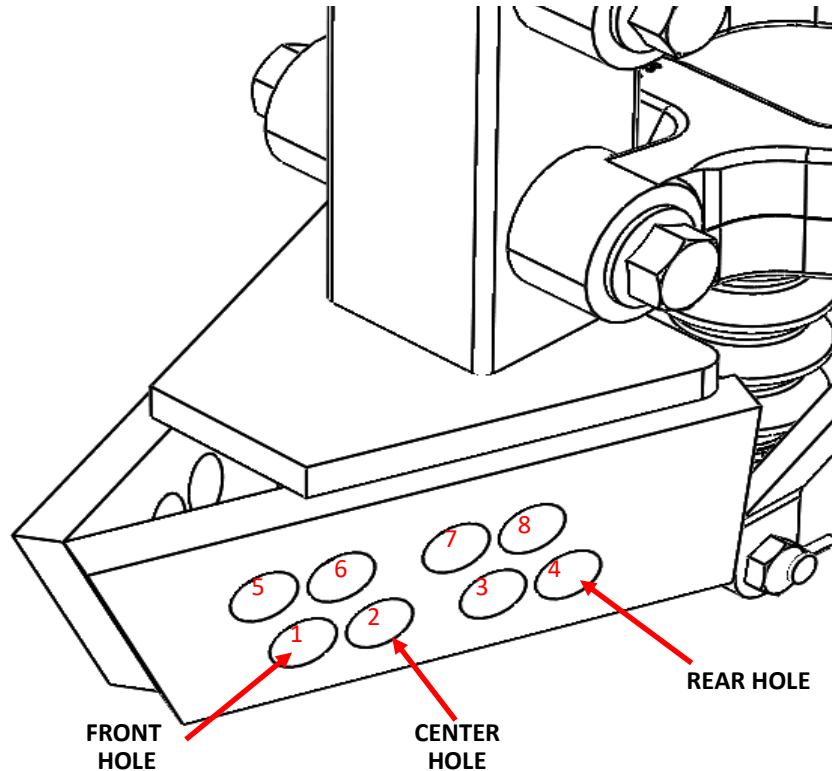
OPTION C: BOTH SIDES RETRACTED

BOTH WHEELS IN REAR HOLE (Hole number 4)

With wheels mounted in the back holes this is a Less aggressive setting.



NOTE: Use top holes (Hole numbers 5 to 8) instead of bottom holes (Hole numbers 1 to 4) for CaseIH 1200 planters.

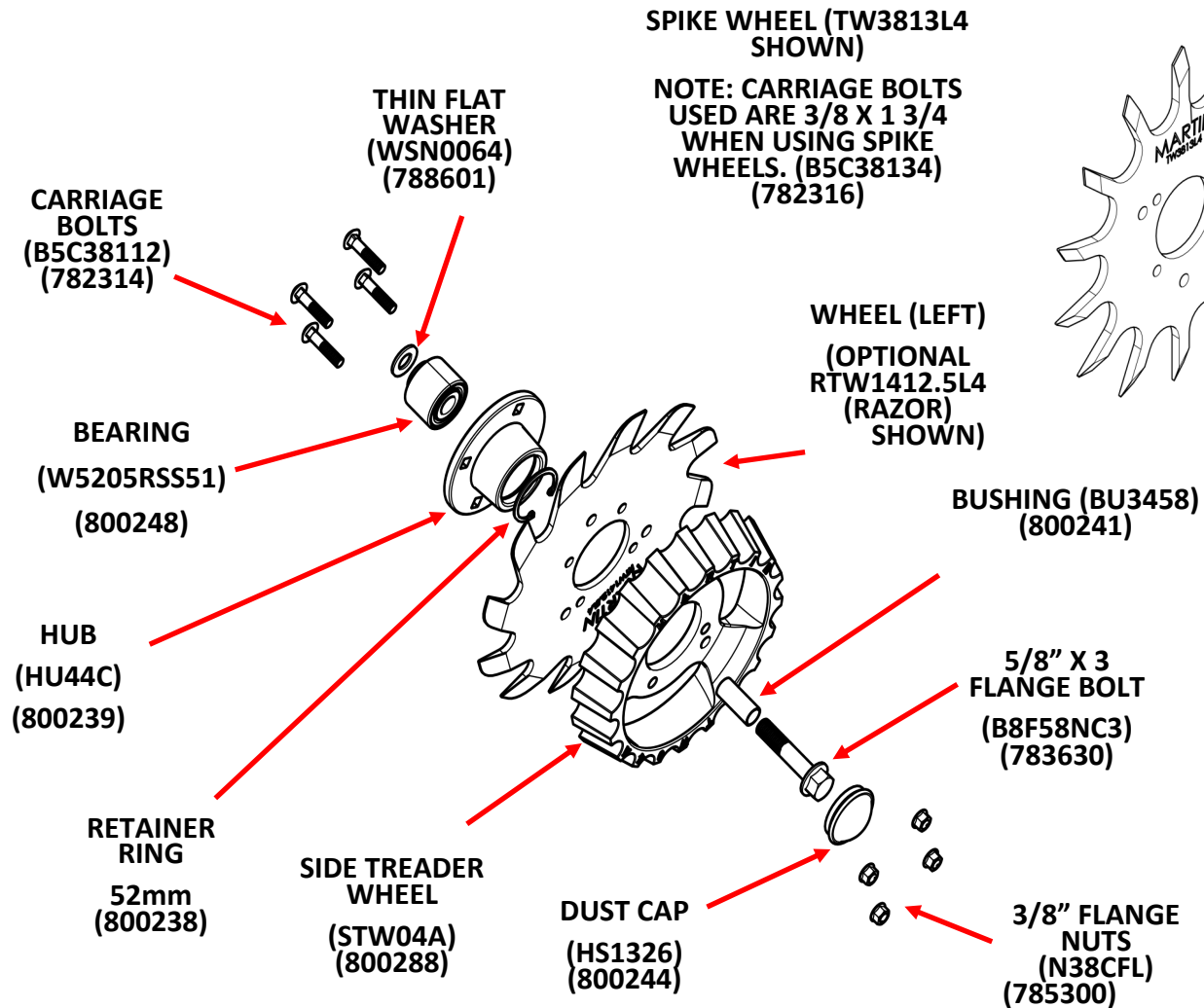


As shown in the picture, Each Stem's side plate has two rows of holes (8 holes total) . One of the holes on each side must be selected based on your soil condition and your planter manufacturer to attach the wheel assembly to the stem.

The bottom three holes (Numbers 1, 2, and 4 in the picture) are used as described on page 3 for different wheel configurations. Substitute The bottom holes with matching top holes (Numbers 5, 6 and 8) **only for CaseIH 1200 planters**. Holes 3 and 7 are not used.

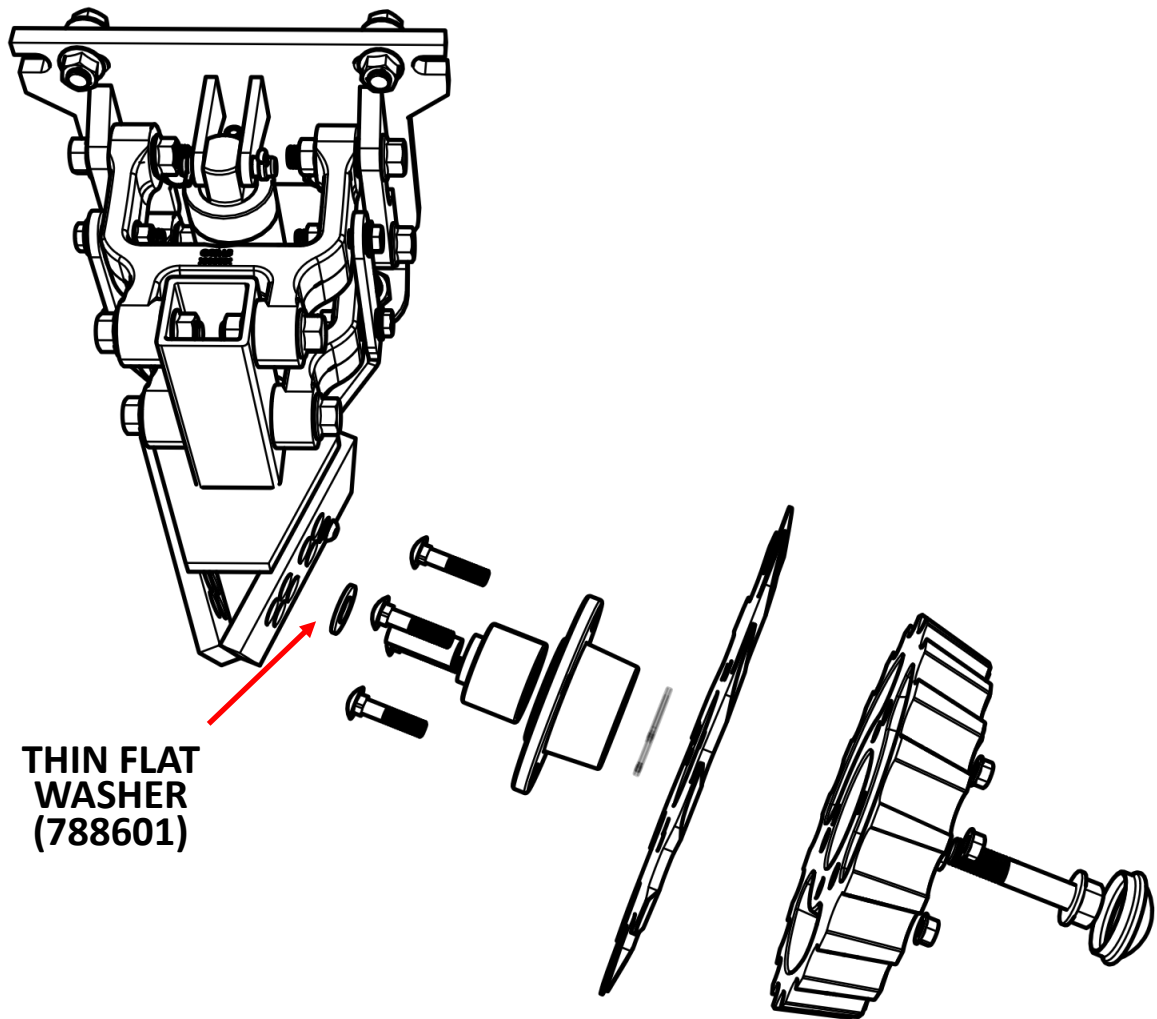
STEP 3 : ASSEMBLE THE WHEEL TO THE HUB

- 1) Install the wheel (part # to the outside) and side treader wheel on the hub, using the four 3/8" carriage bolts and flange nuts. Torque to 23 ft-lbs. Re-tighten after first day's use.
- 2) The wheel marked TW3813-R4 or RTW14125-R4 is for use on the right side of the frame (as viewed from behind the machine). (Left side wheel RTW14125-L4 shown) Repeat for opposite side.



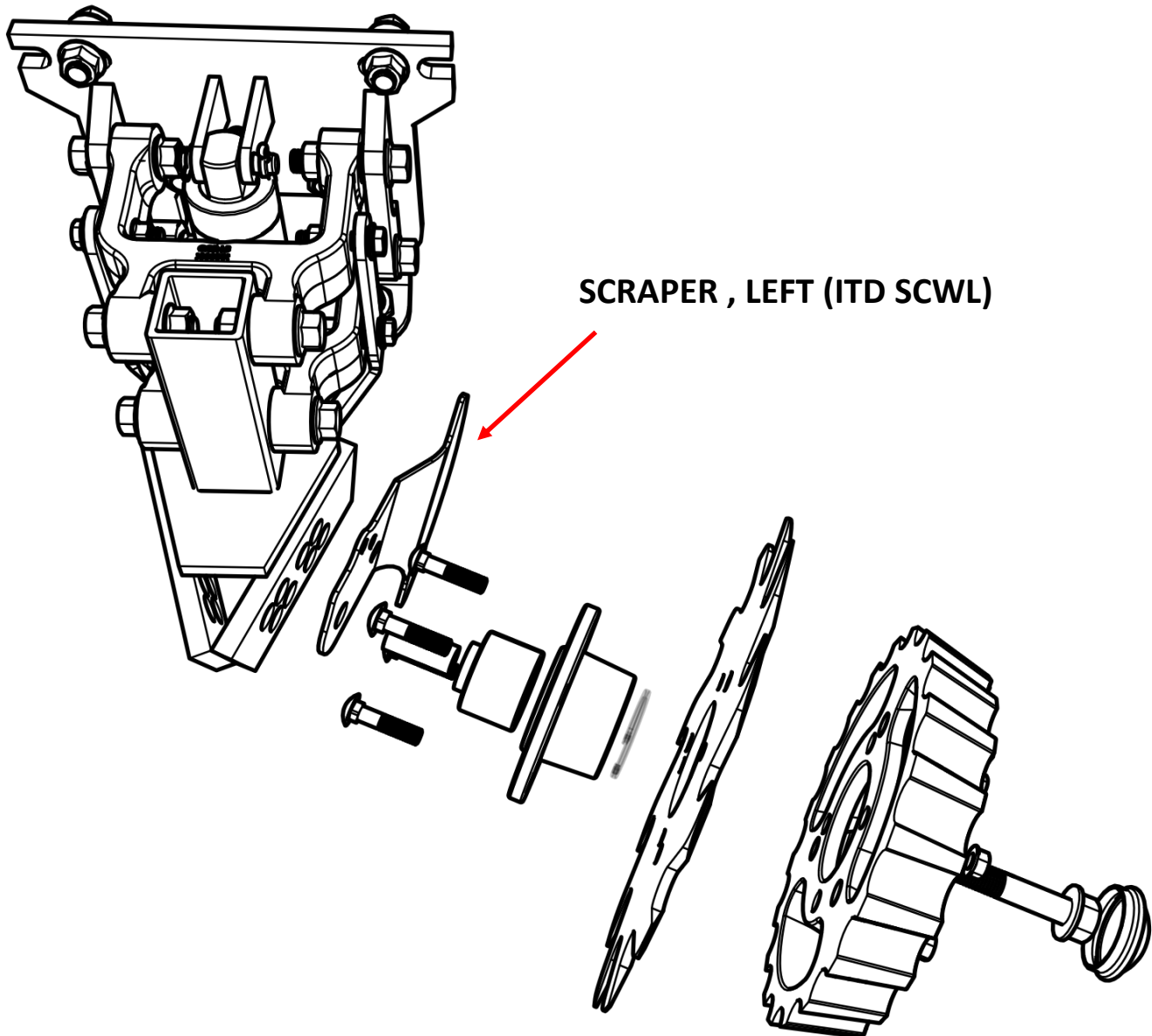
STEP 4 : ATTACH THE WHEEL ASSEMBLIES TO THE STEM

1. After you have selected the proper wheel configuration for your soil type, install the assembled wheel unit in the correct hole number using the 5/8" X 3" flange bolt (B8F58NC3) with the flange nut (N58FLN) and the washer (788601), torque to 116 ft/ lbs, recheck torque after the first days use.



STEP 4A : ATTACH THE WHEEL ASSEMBLIES TO THE STEM WITH SCRAPERS

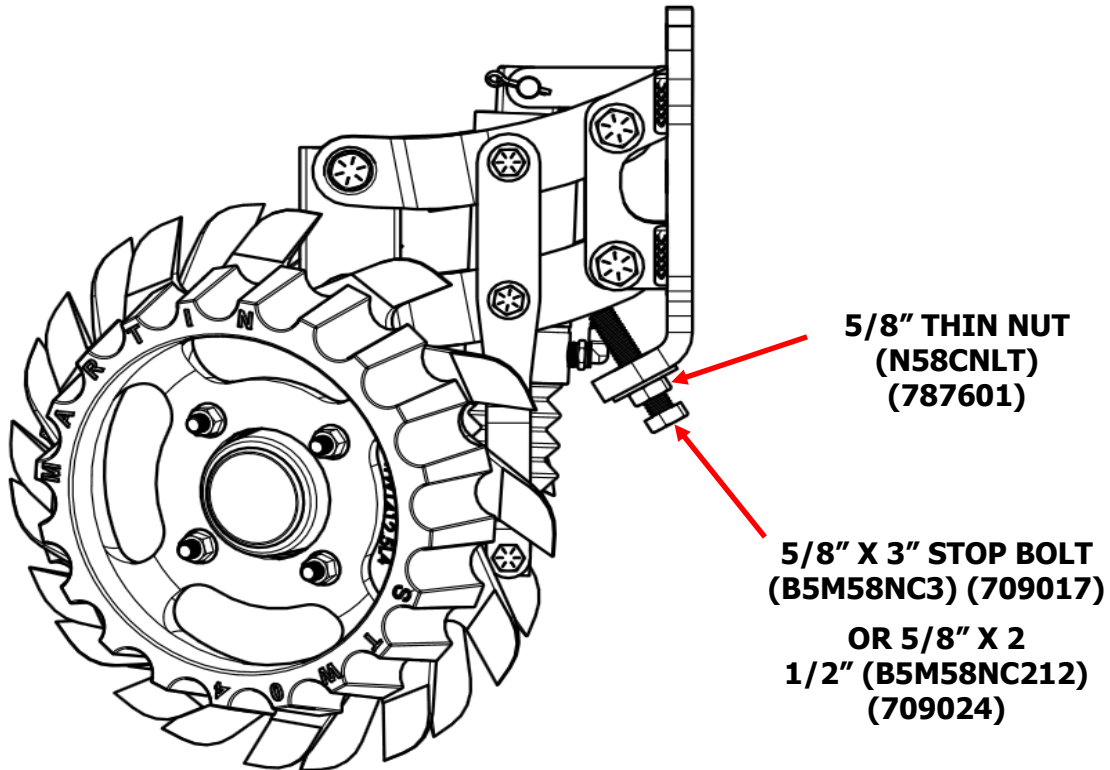
When installing the scrapers the washer (788601) IS NOT USED. Locate the scraper as shown and hold the scraper in position when torquing the flange bolt to 116 ft/lbs. Recheck torque after the first days use. Scrapers are supplied in sets of 2 (1 RH and 1 LH) (Left side shown)



STEP 5 : ADJUST THE STOP BOLT

- 1) Use the 5/8" X 3" stop bolt to limit the lowest position of the row cleaner at the desired height.
- 2) Use the thin 5/8" nut to lock the stop bolt at the adjusted position.

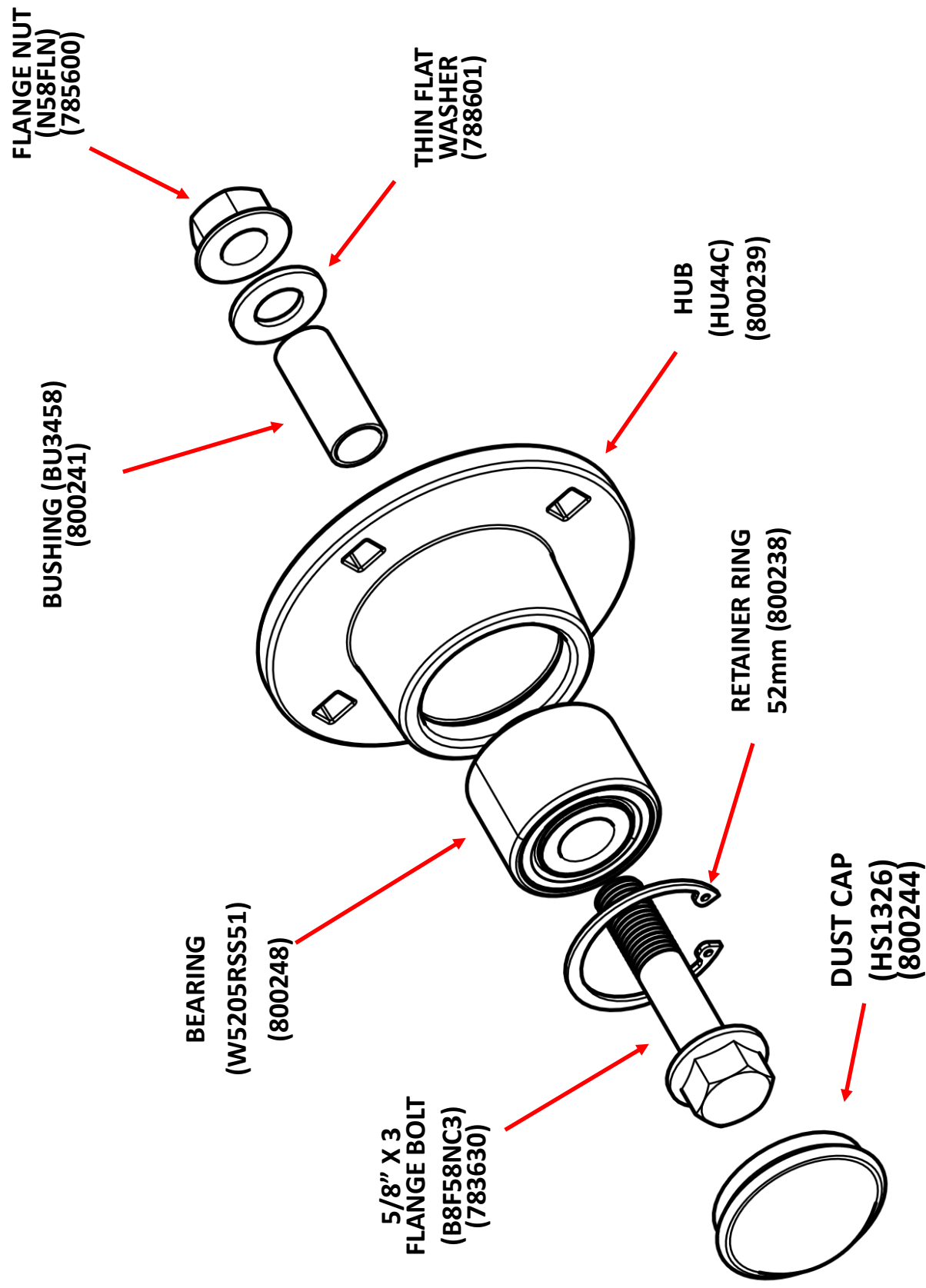
IMPORTANT NOTE: It is very important to limit the row cleaner down travel by adjusting the stop bolt to prevent the air cylinder from extending fully by setting stop bolt to catch the row cleaner just before the cylinder reaches the end of its stroke. Failure to do so will destroy the cylinder prematurely.



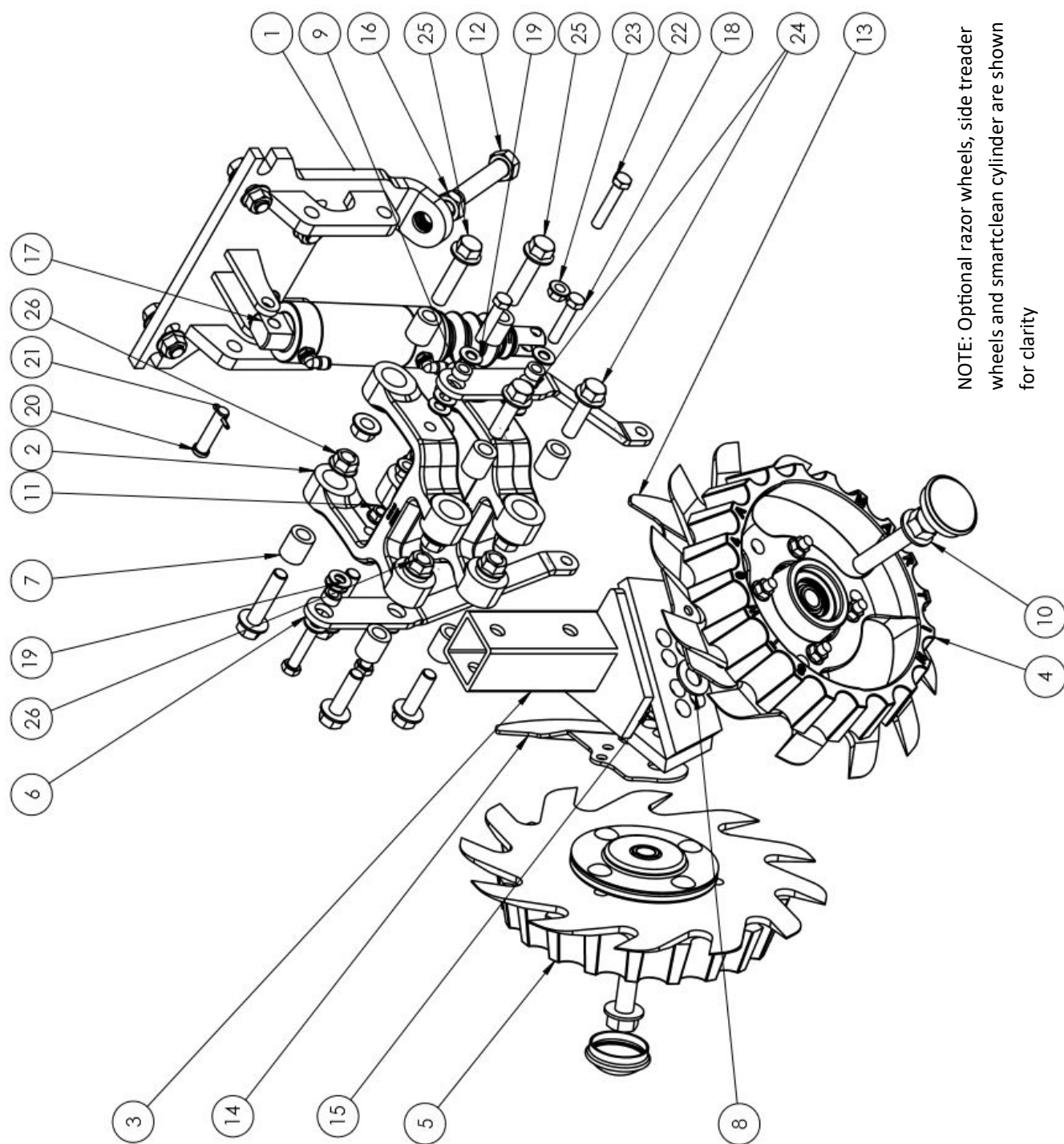
STEP 6 : CONNECT THE SMARTCLEAN AIR LINES TO THE CYLINDER

- 1) Connect the up and down air lines to the cylinder elbow connectors.
- 2) Switch the lines if the cylinder moves the row cleaner in opposite direction of what you would expect.

PARTS LIST FOR 1345 C-HUB ASSEMBLY (HU44C) (900101)



Exploded View FOR ACCR 1345



NOTE: Optional razor wheels, side treader wheels and smartclean cylinder are shown for clarity

BILL OF MATERIAL FOR ACCR 1345

| ITEM NO. | PART NUMBER | DESCRIPTION | QTY |
|----------|-------------------|--|-----|
| 1 | 900043 | MOUNT, CCR R/U | 1 |
| 2 | 800320 CCR-L5 | LINK, CAST MACHINED CCR | 2 |
| 3 | 900029 | STEM, 1345 | 1 |
| 4 | 900155 | ASSY, 12.5" LEFT RAZOR HU44C STW | 1 |
| 5 | 900156 | ASSY, 12.5" RIGHT RAZOR HU44C STW | 1 |
| 6 | 800069 SC1345CCR | ARM, CYL SUPPORT | 2 |
| 7 | 800245 BU7812 | BUSHING, PIVOT, .516 ID X .875 OD X 1 L | 8 |
| 8 | 788601 | WASHER, 5/8 TYPE B, 1 1/4 W | 2 |
| 9 | 800056 BU5838 | BUSHING, PIVOT, .375 ID X .625 OD X .313 L | 4 |
| 10 | 783630 B8F58NC3 | BOLT, 5/8-11 X 3 FL GR8 | 2 |
| 11 | 785300 N38CFL | NUT, 3/8-16 FL PT GR8 | 4 |
| 12 | 784630 B5M58NC3 | BOLT, 5/8-11 X 3 HEX GR8 | 4 |
| 13 | 800361 ITD SCWL | SCRAPER, SPADE CLOSING WHEEL LH | 1 |
| 14 | 800360 ITD SCWR | SCRAPER, SPADE CLOSING WHEEL RH | 1 |
| 15 | 785600 N58FLN | NUT, 5/8-11 FL PT GR8 | 2 |
| 16 | 786601 N58CNLT | NUT, 5/8-11 HEX JAM GR8 | 1 |
| 17 | 800322 SC-CYL-2X2 | CYLINDER, AIR, 2 INCH TRAVEL | 1 |
| 18 | 784316 B5M38NC134 | BOLT, 3/8-16 X 1 3/4 HEX GR8 | 4 |
| 19 | 788300 W38 | WASHER, 3/8 FLAT | 12 |
| 20 | 709014 | PIN, 7/16 X 1 3/4 CLEVIS | 1 |
| 21 | 709016 | PIN, 1/8 X 3/4 COTTER | 1 |
| 22 | 709021 B5M38NC2 | BOLT, 3/8-24 X 2 HEX FT | 1 |
| 23 | 709022 | NUT, 3/8-24 FL FT | 1 |
| 24 | 783516 B8F12NC134 | BOLT, 1/2-13 X 1 3/4 FL GR8 | 4 |
| 25 | 783522 B8F12NC214 | BOLT, 1/2-13 X 2 1/4 FL GR8 | 4 |
| 26 | 785500 N12CFL | NUT, 1/2-13 FL PT GR8 | 8 |



The most trusted name in no-till
Established 1991

Martin Industries LLC

206 Elk Fork Road

Elkton, KY 42220

Telephone: 270-265-5817

E-Mail: martin@martintill.com