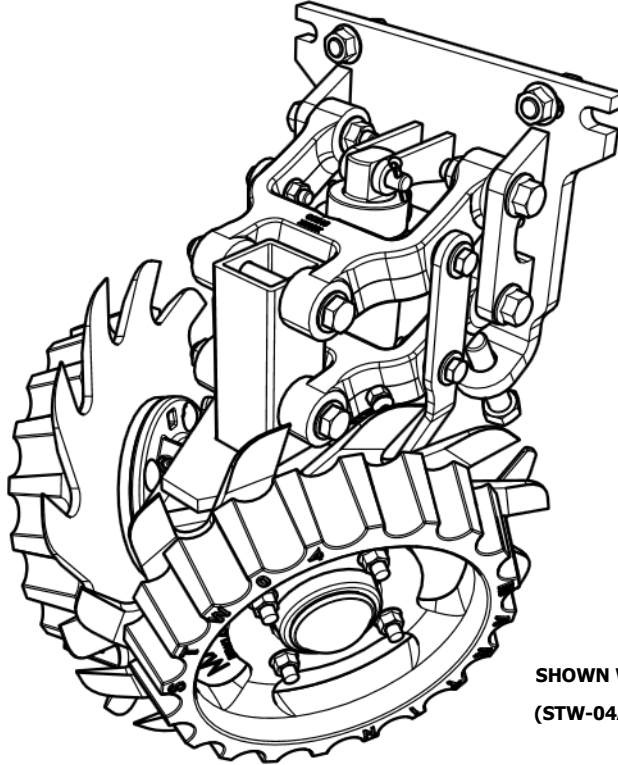


ACCR 1360

PARALLEL ARM COMPACT CLEAN RIDE ROW CLEANER

INSTALLATION INSTRUCTIONS



SHOWN WITH OPTIONAL SIDE TREADER WHEELS
(STW-04A) & *SmartClean* CYLINDER(SC-CYL-2X2)



Martin Planter Attachments

Martin Industries LLC

206 Elk Fork Road

Elkton, KY 42220

Telephone: 270-265-5817

E-Mail: martin@martintill.com

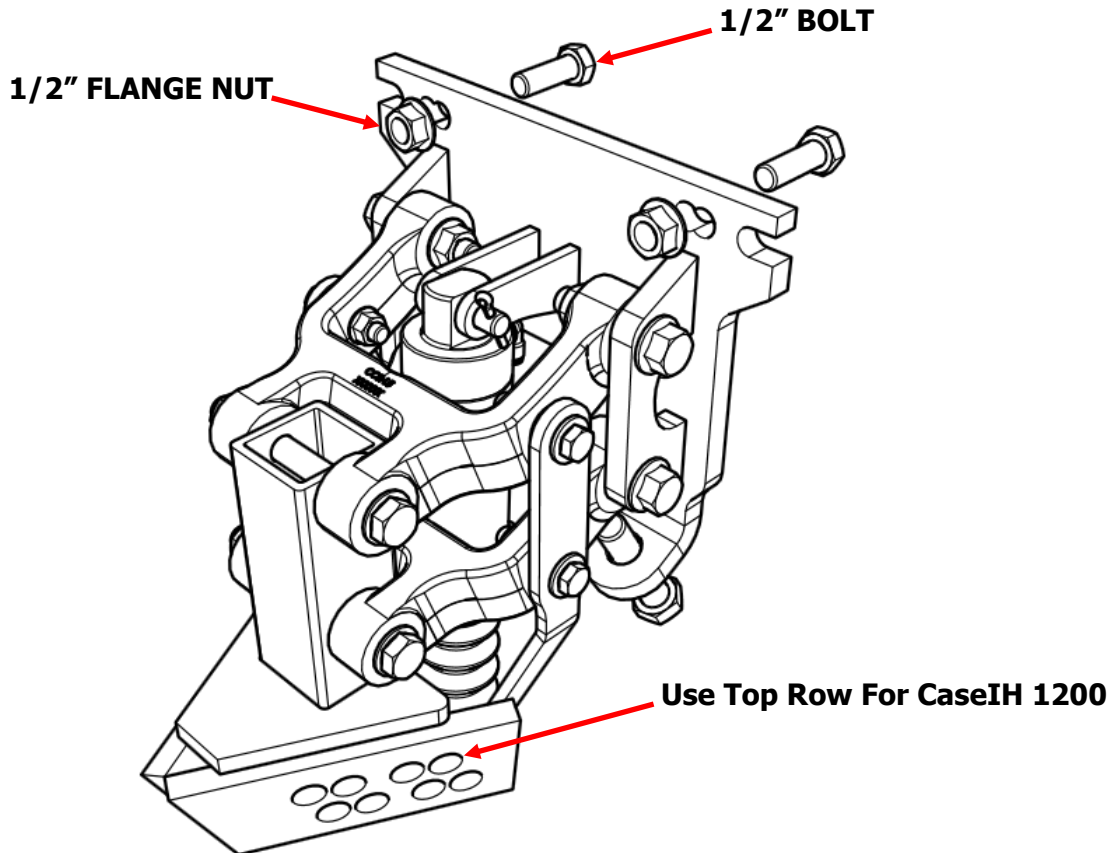
www.martintill.com



STEP 1 : ATTACH THE MOUNT TO THE PLANTER

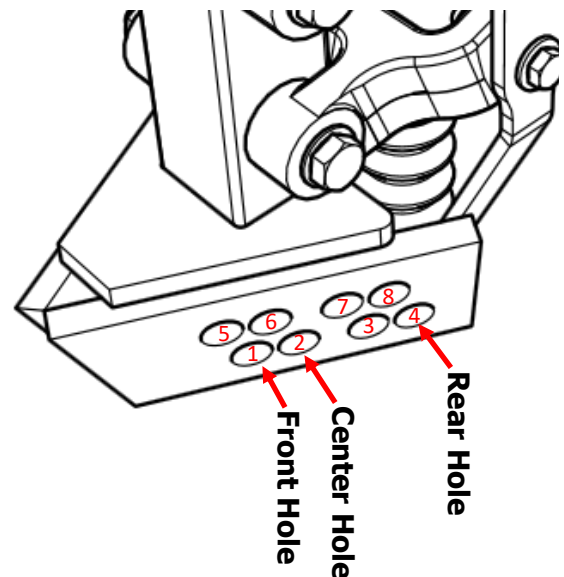
The mount includes different hole patterns (four holes for each hole pattern) for different planters. Find the right hole pattern that matches your planter's hole pattern. For CaseIH 1200 series Planters, refer to 900023 Instructions for L shape brackets installation instruction before this step.

Using four 1/2" X 1 1/2" **OR** 1/2" X 2" bolts, depending on the row unit base plate thickness, attach the Mount and torque the lock nuts to 55 ft-lbs. Hardware must be installed as shown in the picture below.



As shown in the picture, Each Stem's side plate has two rows of holes (8 holes total) . One of the holes on each side must be selected based on your soil condition and your planter manufacturer to attach the wheel assembly to the stem.

The bottom three holes (Numbers 1, 2, and 4 in the picture) are used as will be described in Step 2 for different wheel configurations. Substitute The bottom holes with matching top holes (Numbers 5, 6 and 8) only for CaseIH 1200 planters. The remaining holes (Numbers 3 and 7) are not used for attaching wheels and only are only used to lock the Deflectors (page 5).



STEP 2 : DETERMINE THE BEST WHEEL CONFIGURATION FOR YOUR SOIL CONDITIONS

Three different wheel configurations are shown from the top views.

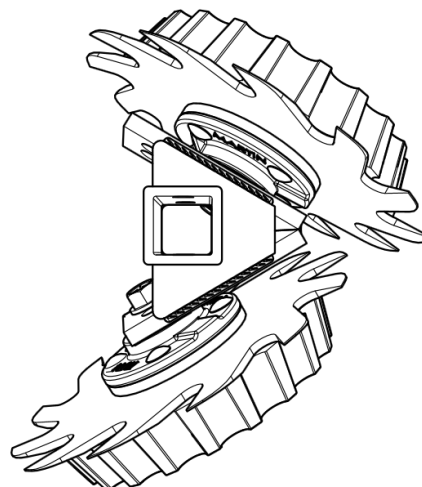
OPTION A: OFFSET

ONE WHEEL IN REAR HOLE (Hole number 4)

ONE WHEEL IN FRONT HOLE (Hole number 1)

The staggered configuration allows the wheels to turn more easily in loose soil.

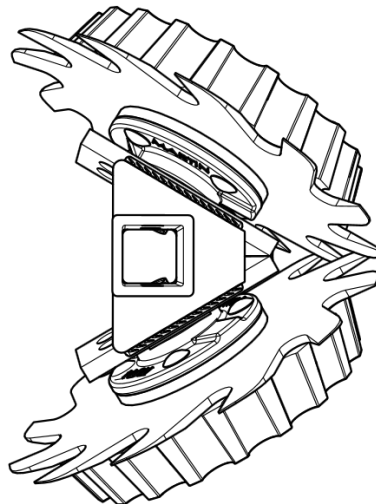
With this staggered configuration, we suggest running the left wheels in the rear hole on the half of the planter and the right wheels in the rear hole on the other half of the planter (when viewed from behind).



OPTION B: INTERSECTED

BOTH WHEELS IN CENTER HOLE (Hole number 2)

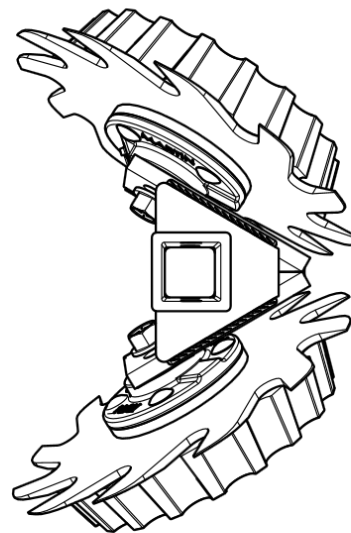
Both wheels forward provides maximum cleaning effect and the interlocked wheels till the middle of the seed row.



OPTION C: BOTH SIDES RETRACTED

BOTH WHEELS IN REAR HOLE (Hole number 4)

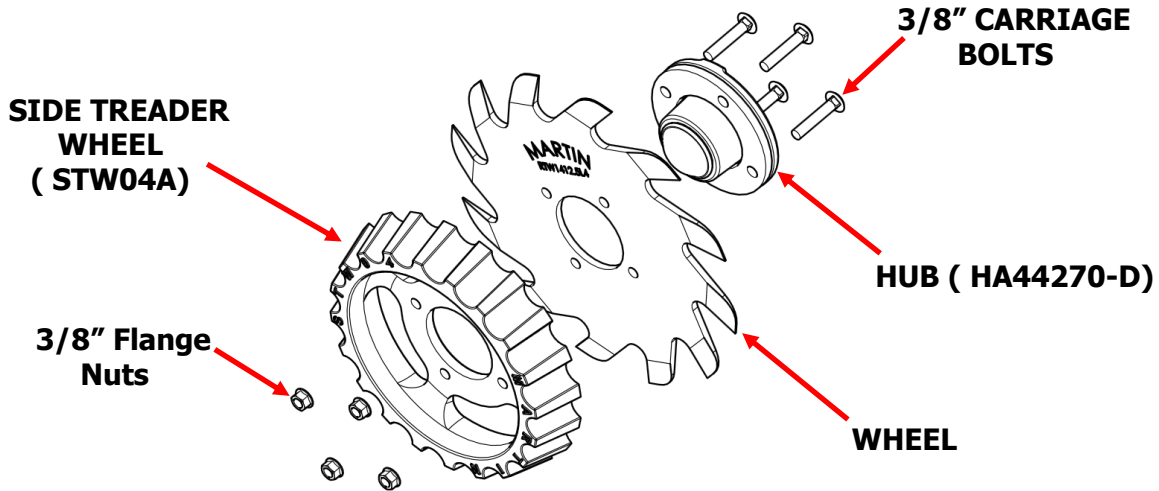
With wheels mounted in the back holes this is a Less aggressive setting.



NOTE: Use top holes (Hole numbers 5 to 8) instead of bottom holes (Hole numbers 1 to 4) for CaseIH 1200 planters.

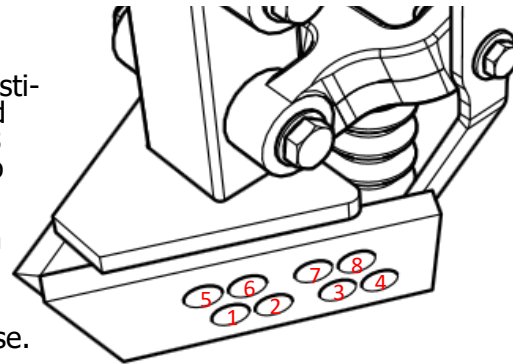
STEP 3 : ASSEMBLE THE WHEEL TO THE HUB

- 1) Install the wheel (part # to the outside) and side treader wheel on the hub, using the four 3/8" carriage bolts and flange nuts. Torque to 23 ft-lbs. Re-tighten after first day's use.
- 2) The wheel marked TW3813-R4 or RTW14125-R4 is for use on the right side of the frame (as viewed from behind the machine). Repeat for opposite side.

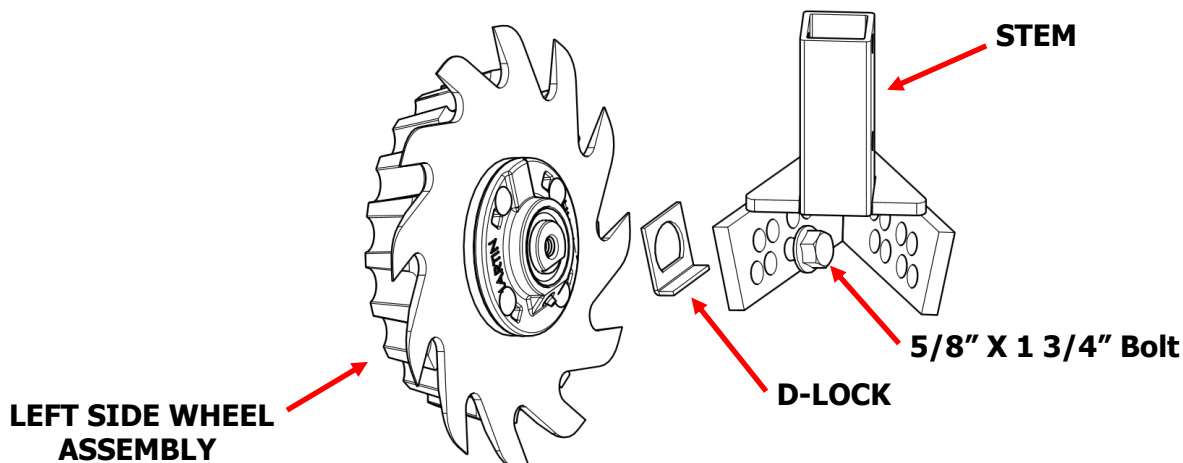


STEP 4-A : ATTACH THE WHEEL ASSEMBLIES TO THE STEM USING D_LOCK

- 1) Each Stem's side plate has two rows of holes (8 holes total) .
The bottom three holes (Numbers 1, 2, and 4 in the picture) are used as described in Step 2 for different wheel configurations. Substitute The bottom holes with matching top holes (Numbers 5, 6, and 8) only for CaseIH1200 planters. The remaining holes (Numbers 3 and 7) are not used for attaching wheels and only are only used to lock the Deflectors (page 5).
- 2) Attach the D-lock to the end of the hub axle making sure it is flush with the end of the axle before bolting the axle to the frame.
- 3) Secure the hub to the frame with the 5/8"x 1 3/4" bolt. Using a torque-wrench, tighten to 112 ft-lbs. Re-tighten after first day's use.
- 4) Repeat process for opposite side .



NOTE: Long D-LOCKS are provided for CaseIH1200 series to be used on the top holes.



STEP 4-B : ATTACH THE WHEEL ASSEMBLIES TO THE STEM USING D-LOCK DEFLECTOR (SCRAPER)

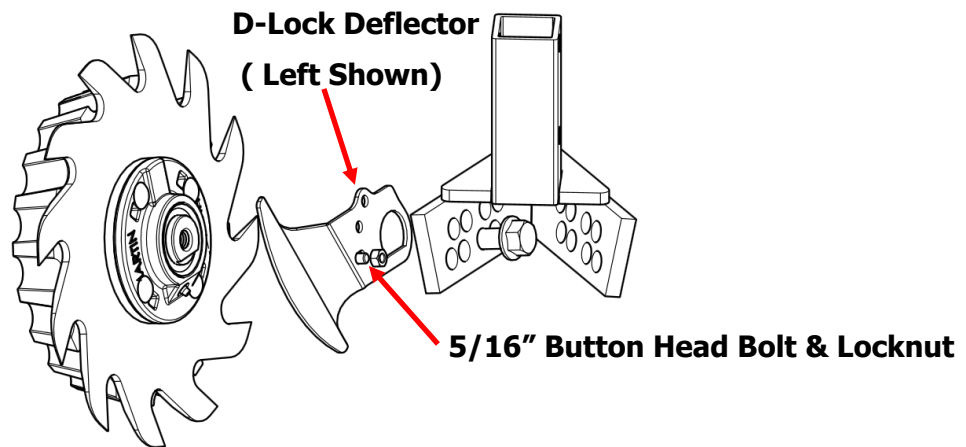
NOTE: The D-Lock Deflector (Scraper) is recommended (in place of the standard D-Lock) when operating in wetter conditions, or damp stringy residue, to reduce wrapping.

NOTE: Either the D-Lock deflector (illustrated below and on next page) or the D-Lock (illustrated on Previous page) must be installed to allow the 5/8" bolt to tighten without the hub rotating.

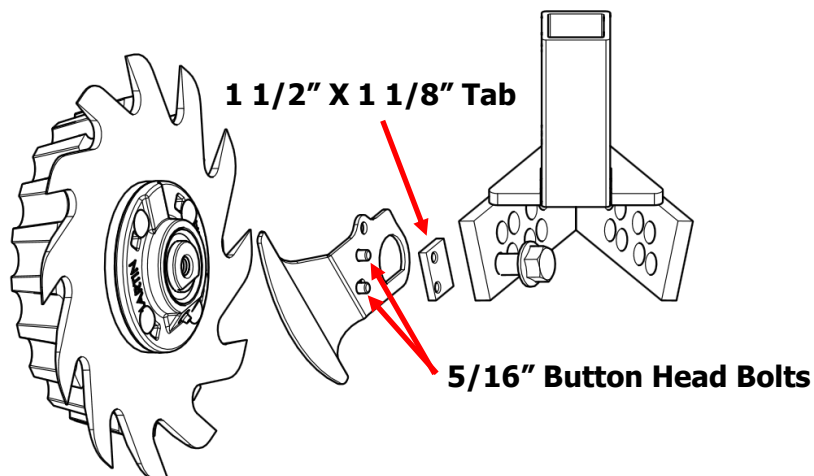
NOTE: Proper location of the D-Lock Deflector is determined by wheel configuration chosen on page 3.

NOTE: The D-Lock Deflectors come in left and right, Left Deflector is shown in below pictures.

- 1) If installing the wheel assembly into hole 1 or 2, attach one of the 5/16" X 1/2" button head bolts and 5/16" lock nuts to the Deflector as shown in the picture . The locknut will fit in hole 3 (when installing the wheel assembly into hole 1) or hole 4 (when installing the wheel assembly into hole 2) and prevent the Deflector from free rotation.



- 2) If installing the wheel assembly into hole 4 , use two 5/16" X 1/2" button head bolts to attach the provided 1 1/2" X 1 1/8" Tab as shown in the picture . The tab will stay against the edge of the stem and prevent the Deflector from free rotation.

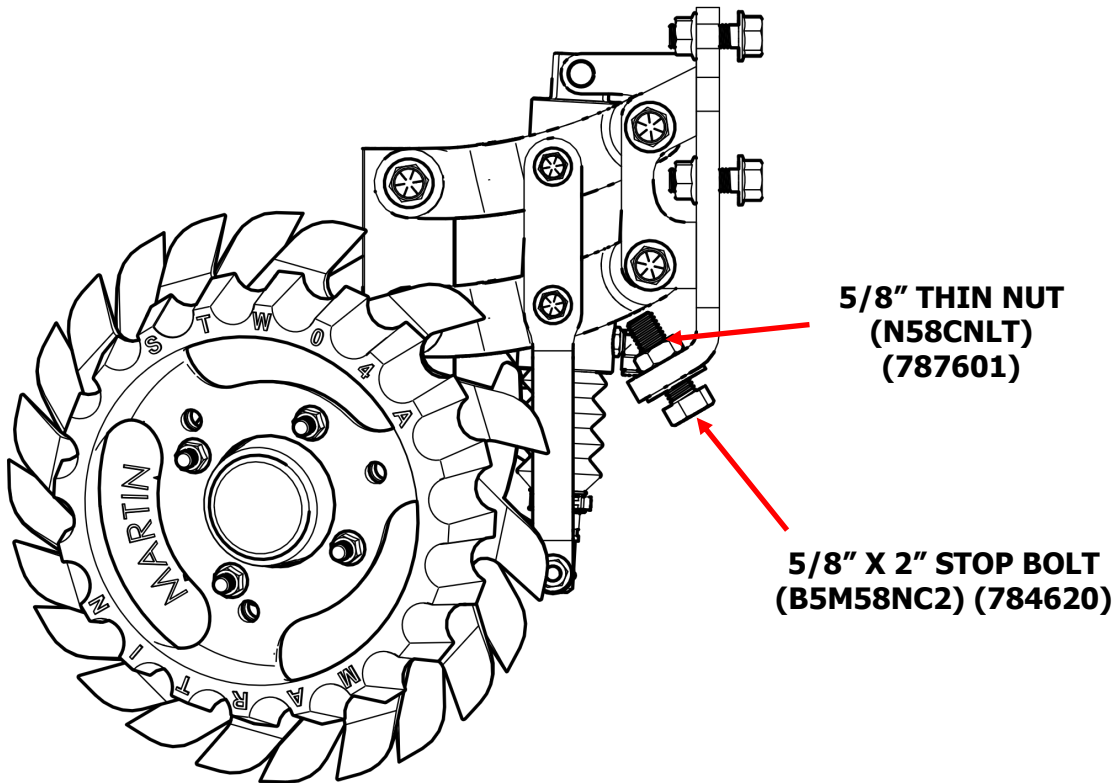


- 3) Attach the Deflector to the end of the hub axle making sure it is flush with the end of the axle before bolting the axle to the frame.
- 4) Secure the hub to the frame with the 5/8" X 1 3/4" bolt. Using a torque-wrench, tighten to 112 ft-lbs. Retighten after first day's use.
- 5) Repeat process for opposite side .

STEP 5 : ADJUST THE STOP BOLT

- 1) Use the 5/8" X 3" stop bolt to limit the lowest position of the row cleaner at the desired height.
- 2) Use the thin 5/8" nut to lock the stop bolt at the adjusted position.

IMPORTANT NOTE: It is very important to limit the row cleaner down travel by adjusting the stop bolt to prevent the air cylinder from extending fully by setting stop bolt to catch the row cleaner just before the cylinder reaches the end of its stroke. Failure to do so will destroy the cylinder prematurely.



STEP 6 : CONNECT THE SMARTCLEAN AIR LINES TO THE CYLINDER

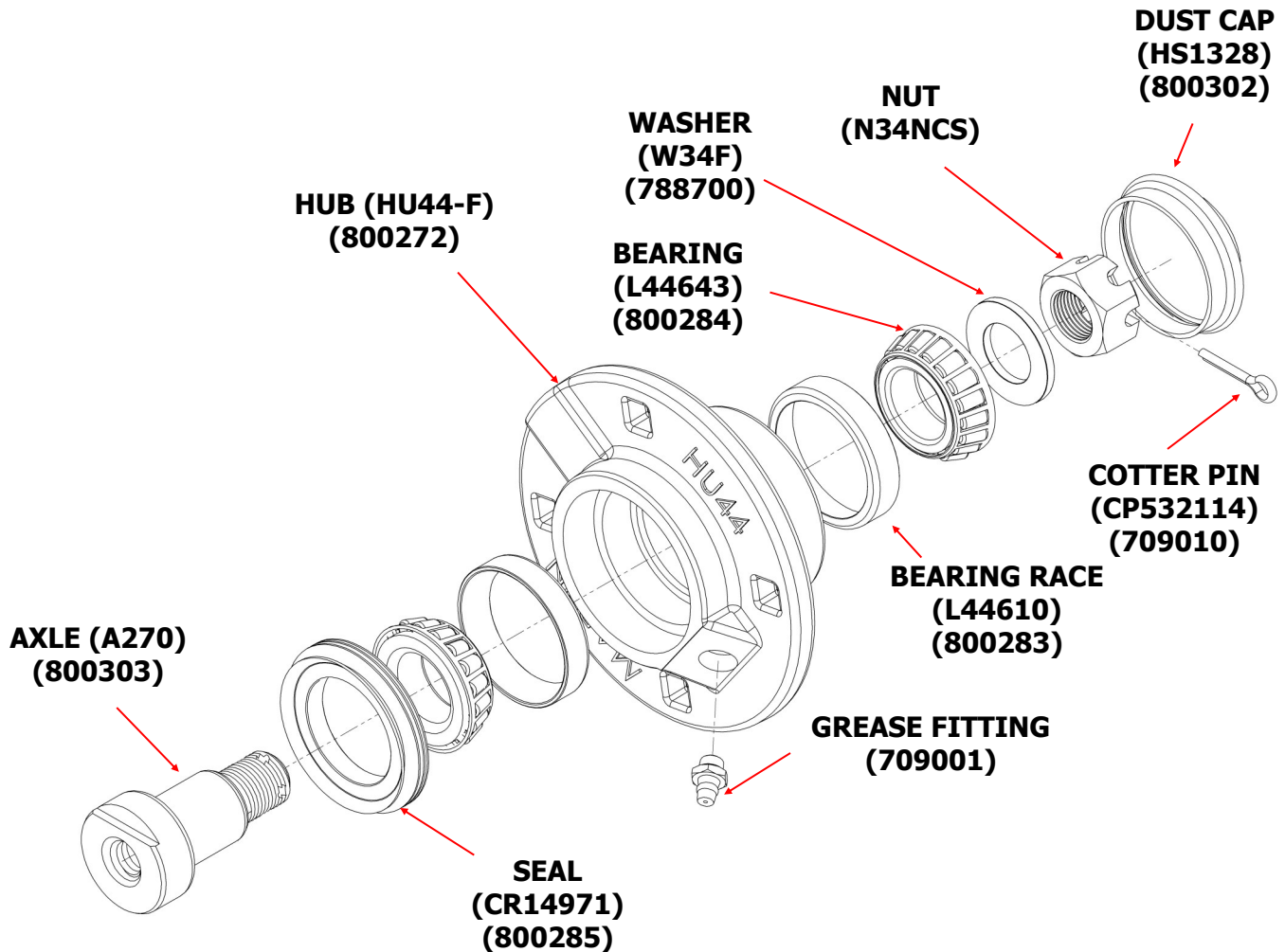
- 1) Connect the up and down air lines to the cylinder elbow connectors.
- 2) Switch the lines if the cylinder moves the row cleaner in opposite direction of what you would expect.

ADDITIONAL PARTS FOR Case IH1200 PLANTERS

If you ordered CIH-ACCR1360 to fit Case IH 1200 series planter, we suggest that you order kit number 900023 in order to ensure the best fit and prevent damage to your ACCR1360 units.

Please see kit 900023 instruction book for installation instructions.

PARTS LIST FOR 1360 HUB ASSEMBLY (HA44270-D)



Row Cleaner Hub Preventative Maintenance

The Row Cleaner hub is designed to be “flushed out” with lubrication, without damaging the triple lip seal. To “flush” the hub, lubricate until fresh grease is visible around the seal.

- In most conditions annual lubrication of the Row Cleaner hub is sufficient
- More frequent lubrication is recommended in dusty or sandy conditions

NOTE: Hubs may feel tight when first installed. They will loosen after they “run in”.

Row Cleaner Hub Bearing Preload Adjustment

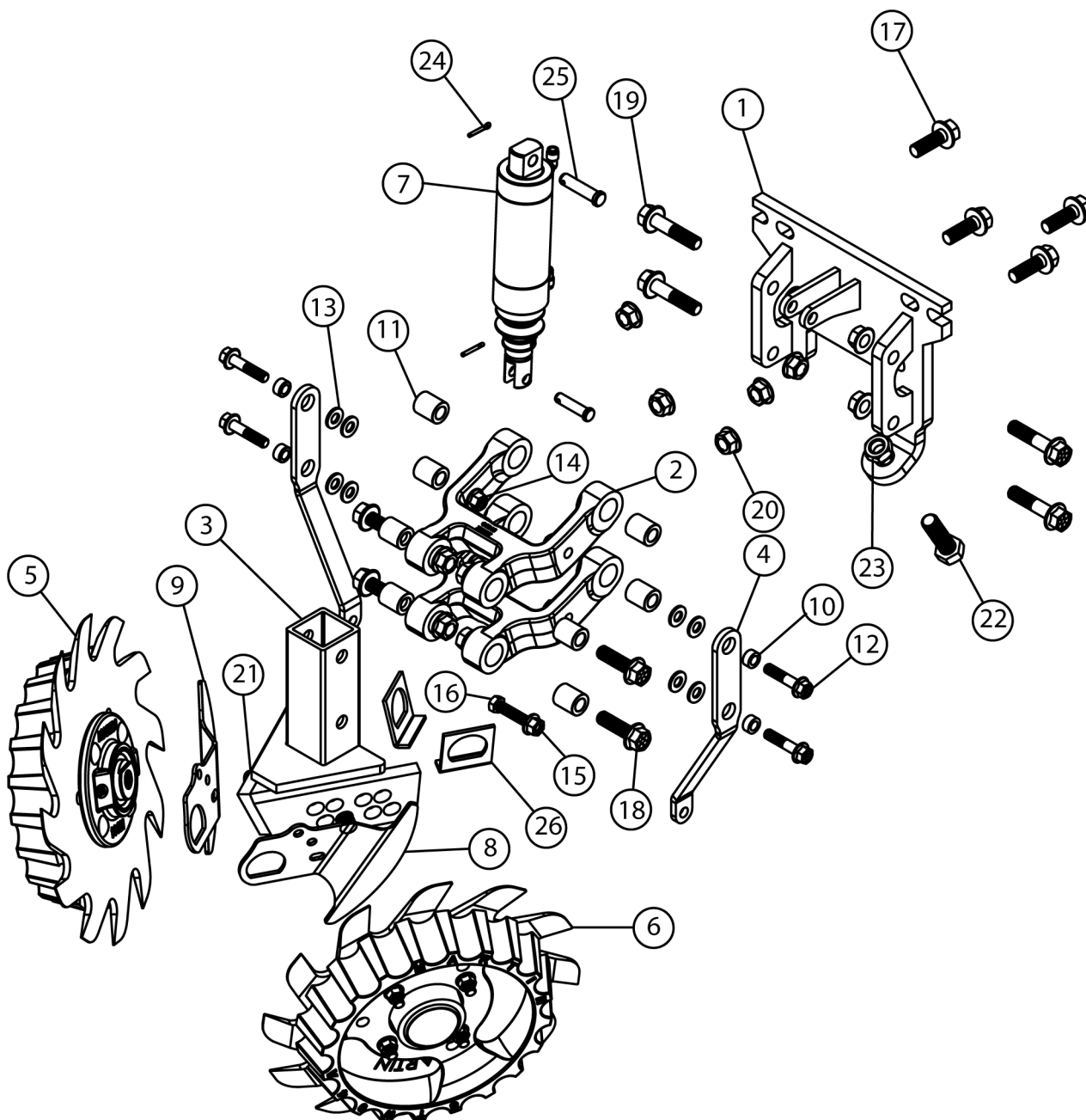
Maintaining proper bearing preload is crucial to bearing life. Monitor and adjust annually. To adjust:

- Remove the dust cap
- Remove the cotter pin
- Tighten the 3/4” nut until you feel zero end play
- Gently back the nut off, leaving .01” - .012” end play
- Replace the cotter pin and dust cap

PARTS LIST FOR ACCR 1360

ITEM NO.	PART NUMBER	DESCRIPTION	QTY
1	900043	MOUNT, CCR R/U	1
2	800320 CCR-L5	LINK, CAST MACHINED CCR	2
3	900011	STEM, 1360	1
4	800069 SC1334CCR	ARM, CYL SUPPORT	2
5	900098 ARTW125R27044STW	ASSY, RAZOR W/ RC HUB W/STW RH	1
6	900097 ARTW125L27044STW	ASSY, RAZOR W/ RC HUB W/STW LH	1
7	800322 SC-CYL-2X2	CYL, SMART CLEAN 2X2	1
8	800231 DLD-02L	SCRAPER, LEFT HAND	1
9	800230 DLD-02R	SCRAPER, RIGHT HAND	1
10	800056 BU5838	BUSHING, PIVOT, 5/8 OD X 3/8 OD	4
11	800245 BU7812	BUSHING, 7/8 OD X 1/2 ID	8
12	783316 B8F38NC134	BOLT, 3/8-16 X 1 3/4 FL GR8	4
13	788300 W38	WASHER, 3/8 SAE FLAT	8
14	785300 N38CFL	NUT, 3/8-16 FL PT GR8	4
15	709021	BOLT, 3/8-24 X 2 HEX	1
16	709022	NUT, 3/8-24 FL FT	1
17	783514 B8F12NC112	BOLT, 1/2-13 X 1 1/2 FL GR8	4
18	783516 B8F12NC134	BOLT, 1/2-13 X 1 3/4 FL GR8	4
19	783522 B8F12NC214	BOLT, 1/2-13 X 2 1/4 FL GR8	4
20	785500 N12CFL	NUT, 1/2-13 FL PT GR8	12
21	783616 B5F58NC134	BOLT, 5/8-11 X 1 3/4 FL PTCH GR8	2
22	784620 B8M58NC2	BOLT, 5/8-11 X 2 HEX TAP GR8	1
23	709002	NUT, 5/8-11 JAM NUT GR8	1
24	709016	PIN, 1/8 X 3/4 COTTER	1
25	709014	PIN, 7/16 X 1 3/4 CLEVIS	1
26	800231 DLR-01	LOCK, D-LOCK	2

EXPLODED VIEW FOR ACCR 1360





The most trusted name in no-till
Established 1991

Martin Industries LLC

206 Elk Fork Road

Elkton, KY 42220

Telephone: 270-265-5817

E-Mail: martin@martintill.com

www.martintill.com