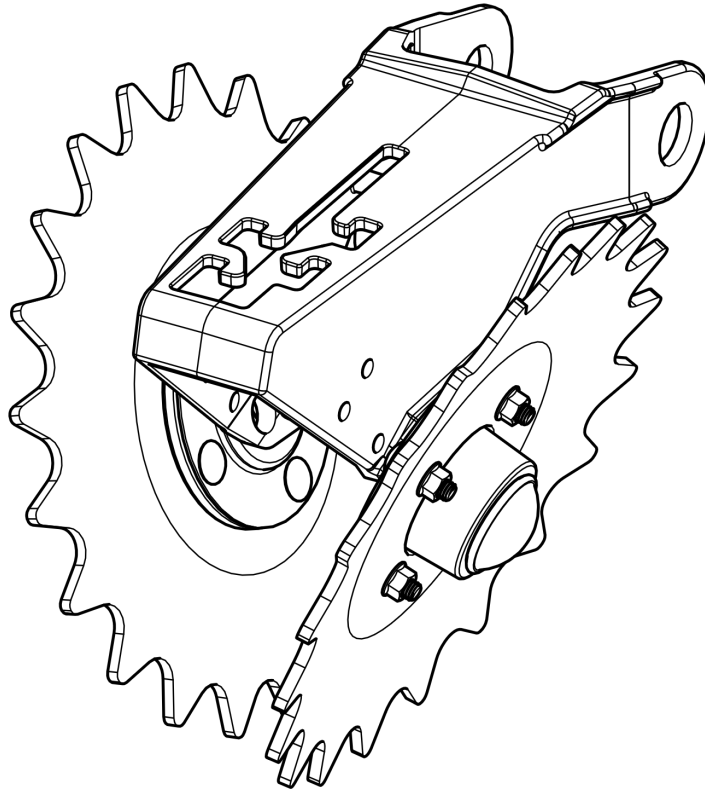


BSCW1344DC

**Cupped Dimple Closing Wheel for 1700 Deere and
Kinze planters with bolt on hubs
Installation Instructions**



Martin Planter Attachments

Martin Industries LLC

206 Elk Fork Road

Elkton, KY 42220

Telephone: 270-265-5817

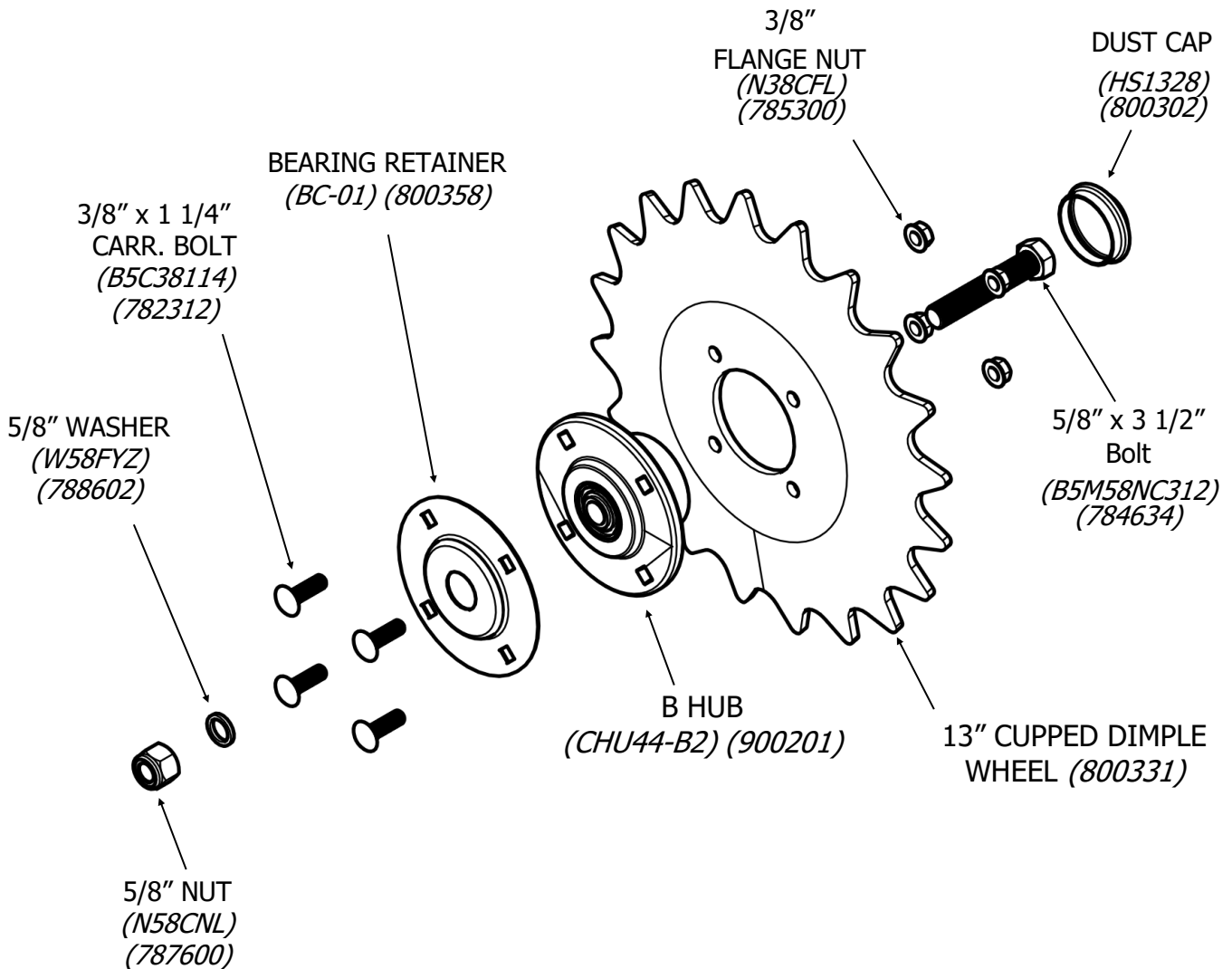
E-Mail: martin@martintill.com

www.martintill.com



BSCW1344DC ASSEMBLY INSTRUCTIONS.

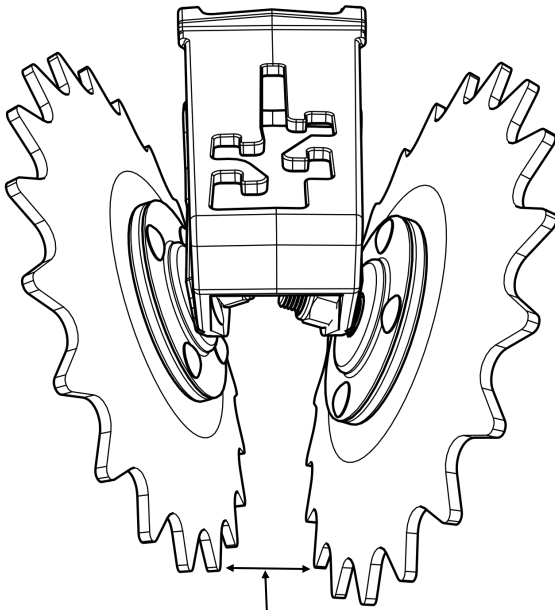
- 1) Attach the dimple wheel on to the CHU44-B2 hub, with part number facing the hub.
- 2) Place the BC-01 bearing cap on the opposite side of the CHU44-B2 hub.
- 3) Insert the four 3/8" X 1 1/4" carriage bolts then add the four 3/8" flange nuts. Tighten.
- 4) Use 1 washer per wheel for recommended start spacing. If different spacing is desired, add included extra washers between the hub and housing.
- 5) Torque 3/8 bolts to 23 ft-lbs. Re-tighten after first day's use.
- 5) Repeat the assembly instructions for the opposite side assembly.



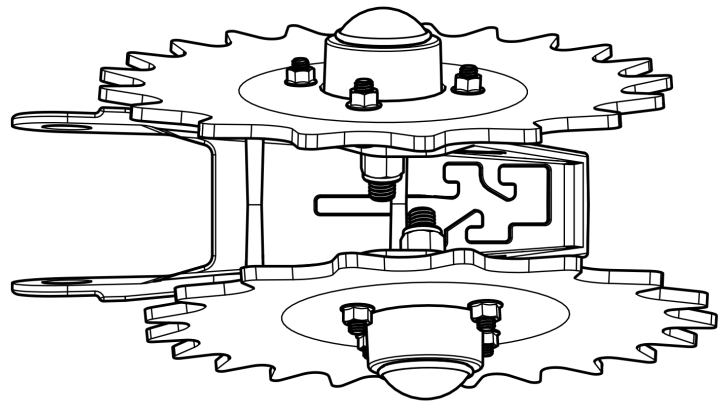
INSTALLING THE BSCW1444C TO THE TAIL WHEEL HOUSING

- 1) Insert the 5/8" x 3 1/2" bolt thru the hole in the tail wheel housing then add the nut and tighten. Repeat for opposite side**
- 2) Recommended distance is 2 1/2" as shown below. Additional washers included for adjusting distance.**

Recommended to run wheels offset as shown below with the left side wheel leading (closer to the row unit).



RECOMMENDED STARTING
DISTANCE 2 1/2" WHEN
ASSEMBLED.



Hardware Required Per Wheel

- | | |
|--------------------------------|-------|
| 1) 3/8" X 1 1/4" Carriage Bolt | Qty 4 |
| 2) 3/8" Flange Nut | Qty 4 |
| 3) 5/8" Washer | Qty 3 |
| 4) 5/8" Nylock Nut | Qty 1 |
| 5) 5/8" X 3 1/2" Bolt | Qty 1 |



The most trusted name in no-till
Established 1991

Martin Industries LLC

206 Elk Fork Road

Elkton, KY 42220

Telephone: 270-265-5817

E-Mail: martin@martintill.com