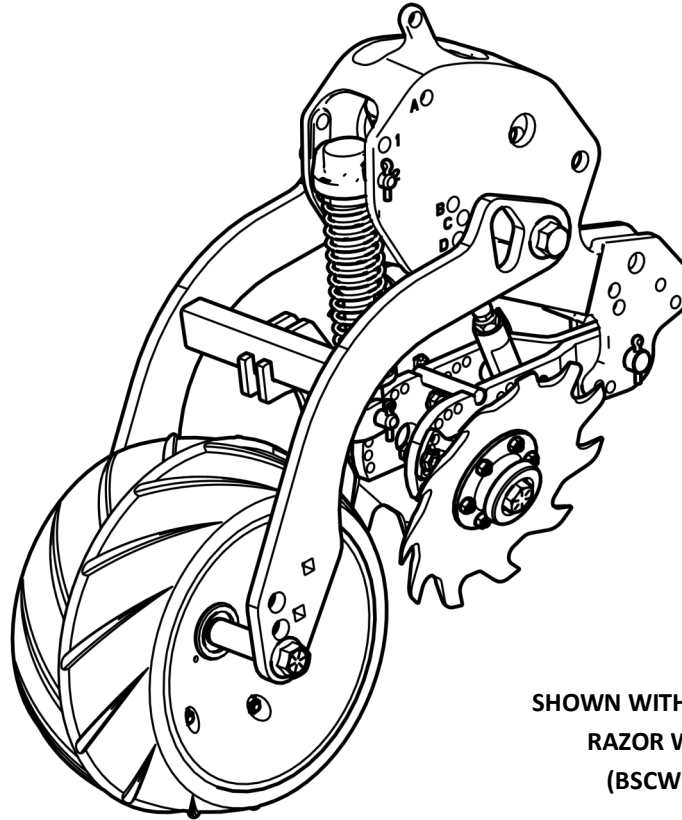


CNH 2000 CLOSING KIT

INSTALLATION INSTRUCTIONS



SHOWN WITH 9" CUPPED
RAZOR WHEELS
(BSCW9ZCS)



Martin Planter Attachments

Martin Industries LLC

206 Elk Fork Road

Elkton, KY 42220

Telephone: 270-265-5817

E-Mail: martin@martintill.com

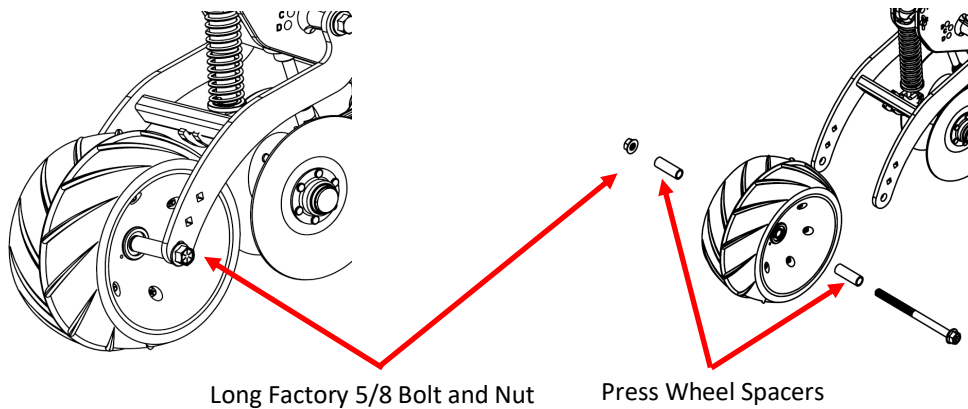
www.martintill.com



STEP 1 :REMOVE THE PRESS WHEEL

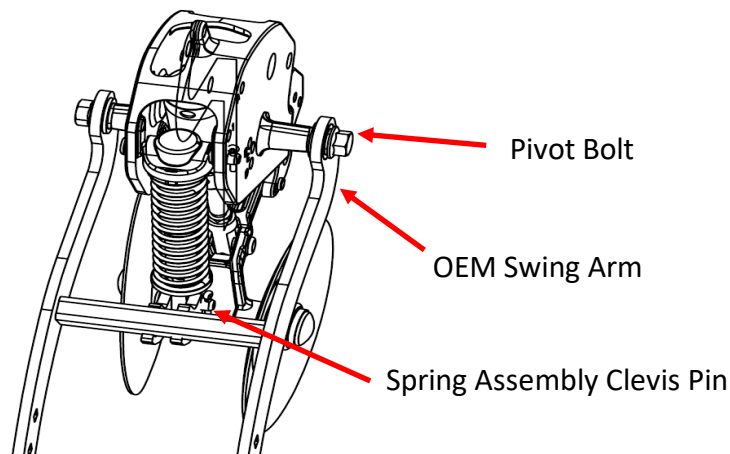
Remove the press wheel from the Factory Swing arm. Retain the bolt, spacers and lock nut for later use.

Note: If Swing arms were not purchased, ignore this step and skip to step 3.



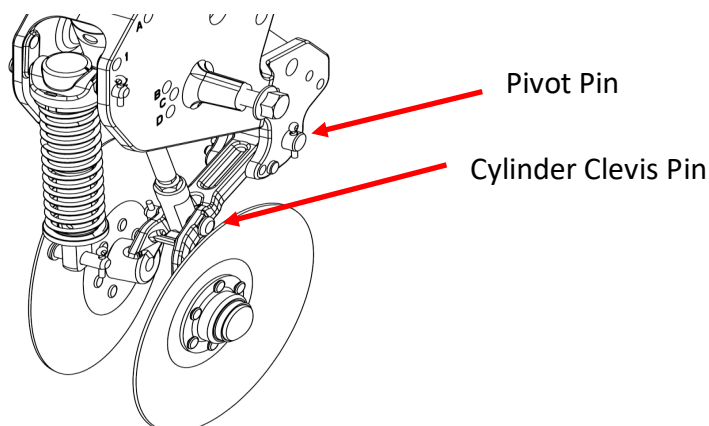
STEP 2 : REMOVE THE FACTORY SWING ARM FROM THE UNIT

- 1) Remove the clevis pin from the spring assembly .
- 2) Remove factory swing arm by removing pivot bolts. Place to side for installation of new Swing Arms.



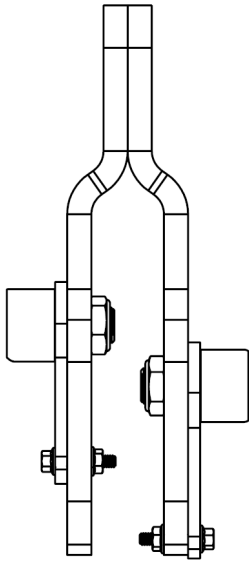
STEP 3 : REMOVE THE CLOSING SYSTEM

- 1) Remove pivot pin from closing wheel arm and pin from end of cylinder Rod.

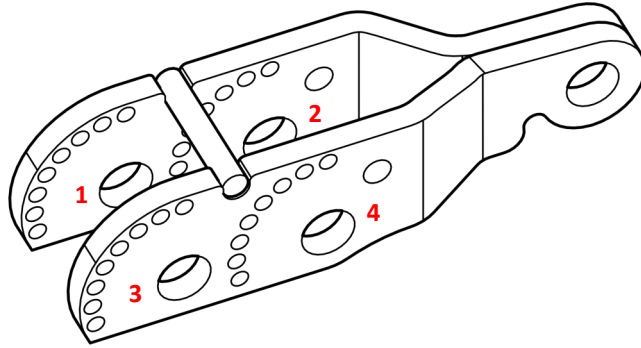


STEP 4 : CHOOSE THE DESIRED AXLE ORIENTATION

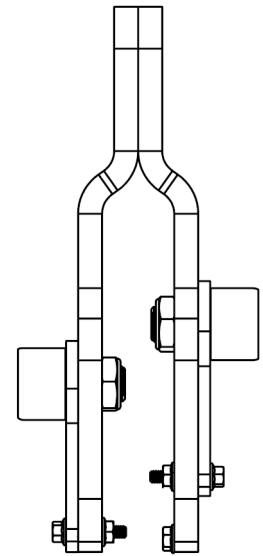
Skip to Step 7 if axles and rock guard were preinstalled at Martin Industries.



Left Leading
(Top View)



NOTE: We recommend staggering axles (either 1&4 (RH Leading) or 2&3 (LH Leading)).



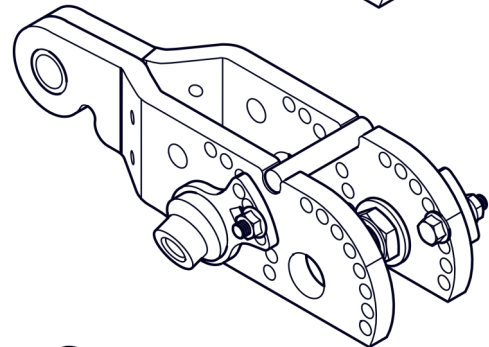
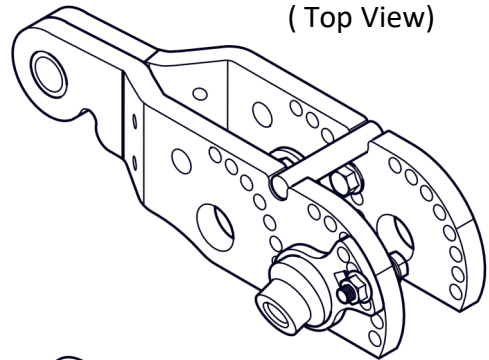
Right Leading
(Top View)

OPTION A : STAGGERED - RIGHT LEADING (LEFT HAND TRAILING)

ONE AXLE IN THE REAR HOLE (Hole number 1)

ONE AXLE IN THE FRONT HOLE (Hole number 4)

NOTE: Recommended Configuration for half of planter



OPTION B : STAGGERED - LEADING LEFT (RIGHT HAND TRAILING)

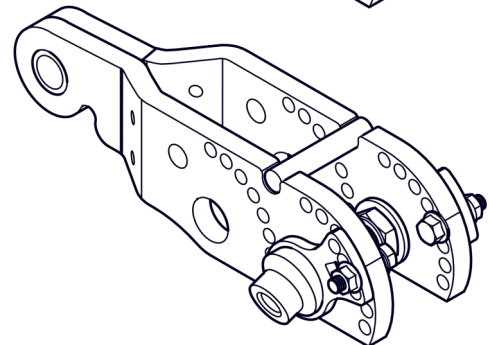
ONE AXLE IN THE REAR HOLE (Hole number 2)

ONE AXLE IN THE FRON HOLE (Hole number 3)

NOTE: Recommended Configuration for half of planter

OPTION C : SIDE TO SIDE

Either both axles in the front or both in rear



STEP 5 : ASSEMBLE AXLES TO CLOSING FRAME

With Axle configuration decided upon, it is recommended that you start with axles and levers installed in the Neutral Position with the flat of axle and lever parallel with bottom of Frame.

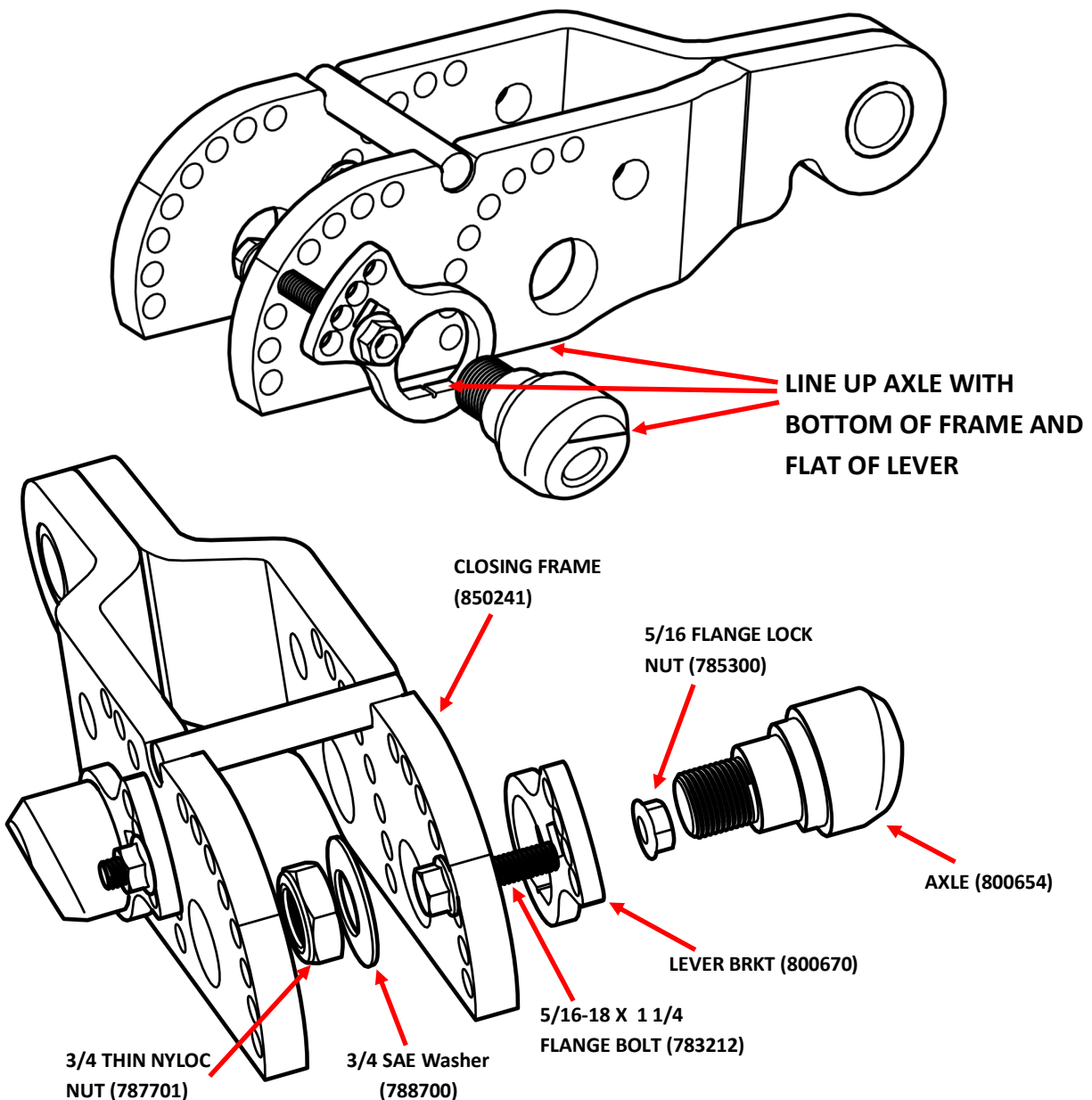
Install 5/16 x 1 1/4 Flange bolt in the fourth hole up on the frame and second hole on the lever for Neutral position.

Insert the Axle threads through the Closing frame hole and fasten with provided 3/4 SAE Washer and 3/4 Thin Nyloc Nut (787701).

NOTE: DO NOT OVER TIGHTEN, THE AXLE SHOULD ROTATE WITH SOME RESISTANCE FELT.

Repeat for opposite side.

With Axles installed, attach end of the closing frame to the Row unit using existing pivot pin.



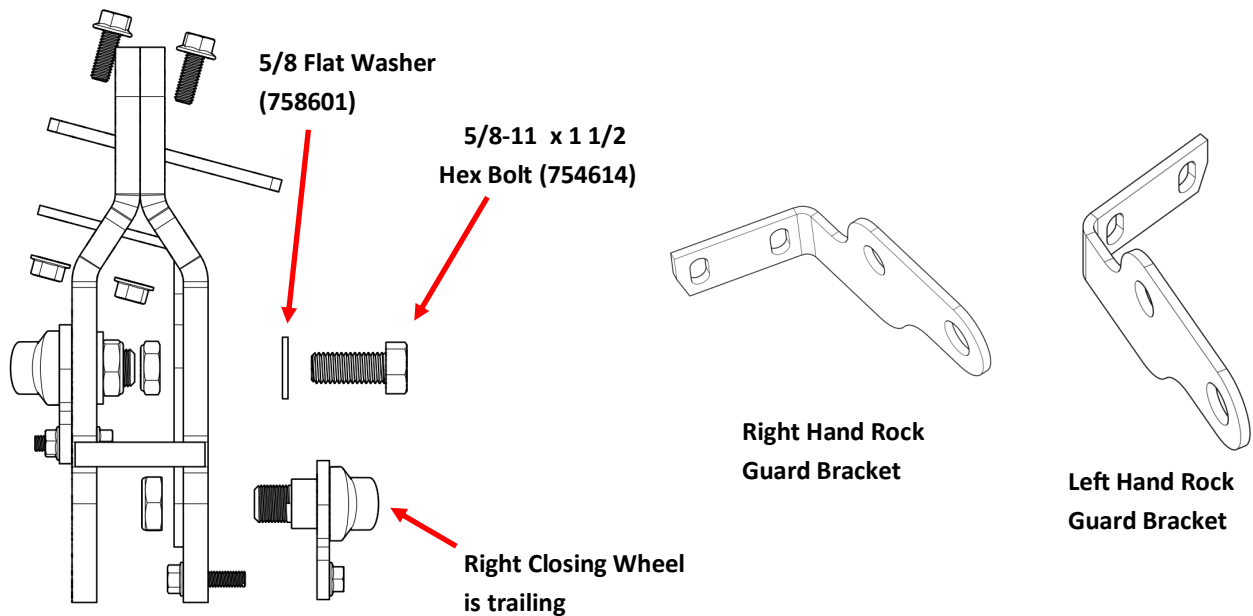
STEP 6 : INSTALLING ROCK GUARD

If not installed from factory, a rock guard can be installed before installing wheels to prevent rocks from wedging between the frame and the wheel.

First, uninstall the trailing wheel and axle, see below example (Right Closing wheel from top is the trailing wheel).

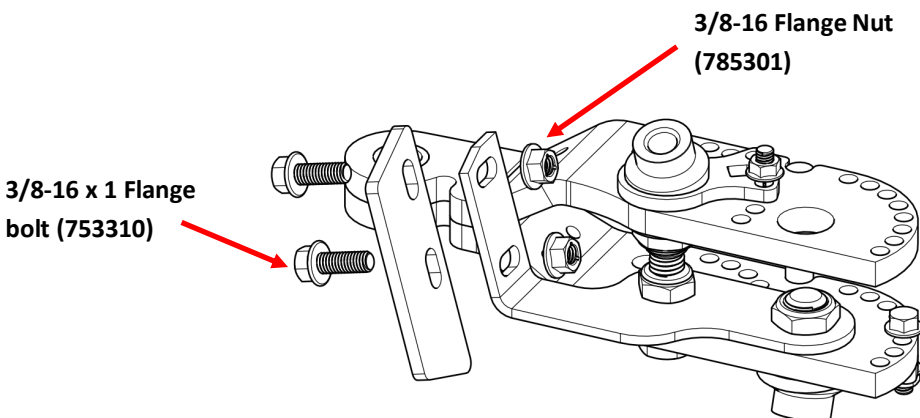
Place the Right Hand rock guard in place of the previously installed washer between the nut and the frame. The dropped down bent portion of the rock guard should be on the bottom of the frame as shown.

Line up the second hole in the rock guard with the empty hole in the Closing Frame, and install using provided 5/8 x 1 1/2 Hex Bolt, 5/8 Washer, and Thin Nylock nut as shown.



To install the rock guard blade, install with the holes offset away from the trailing side, in the example below, the holes are offset to the left with the right wheel trailing on the closing frame. Install using the 3/8 x 1 Flange bolts and flange nuts.

Reinstall the right hand wheel and adjust the blade to fit your closing wheel configuration. Adjusting the toe in of each wheel could cause this blade to need adjustment.

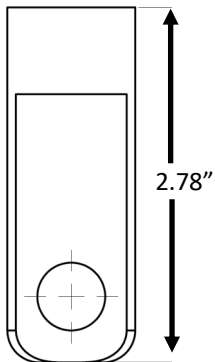


STEP 7 : REINSTALL CYLINDER TO CLOSING FRAME

Determine if you have a long rod end or a short. If you have a short rod, consider upgrading to a long rod end or order optional bushing to limit down travel so that the cylinder does not stroke out all the way.

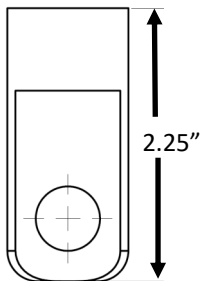
Connect the cylinder to the closing frame using 1 Bushing (BU7552) per side between the closing frame and cylinder rod. Insert 1/2 x 3 Clevis Pin and secure with provided cotter pins.

NOTE: Condition to use the Optional Bushing (800432)



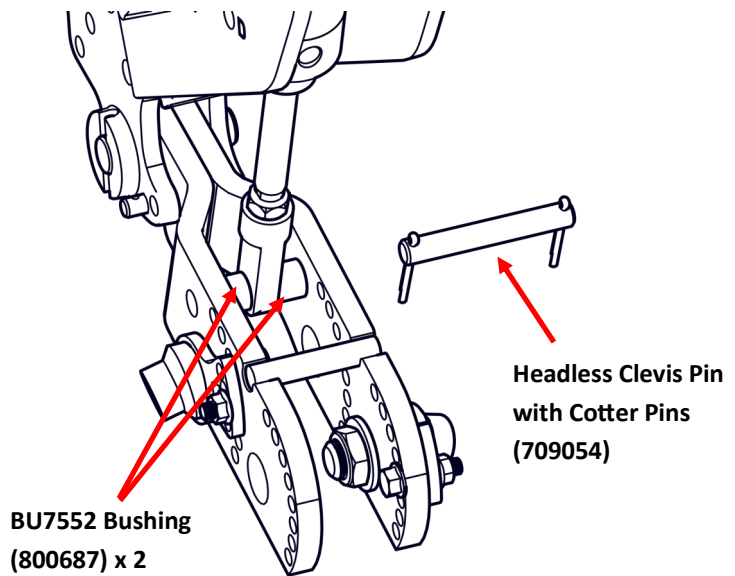
Discard the bushing if you have long rod end.

Late 2018 and up



Use the bushing if you have early 2018

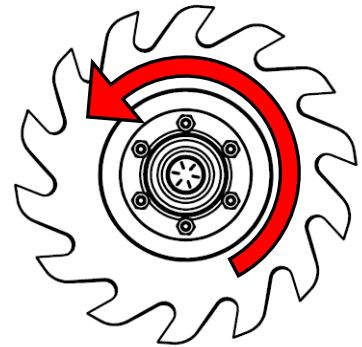
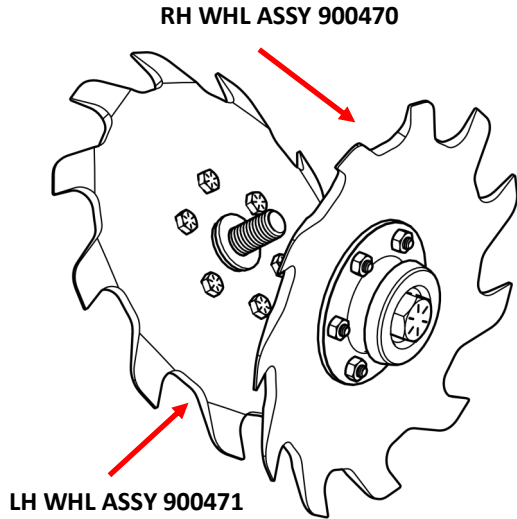
See note below with serial break



NOTE : Bushing 800432 is an optional hardware only to be installed if you have Cylinder with short rod end.

MY18 S/N: (2140- YJS073638, 2150-12/16R FFT YJS073647) AND EARLIER WILL NEED THIS BUSHING.

STEP 8 : INSTALL THE BSCW9ZC-S



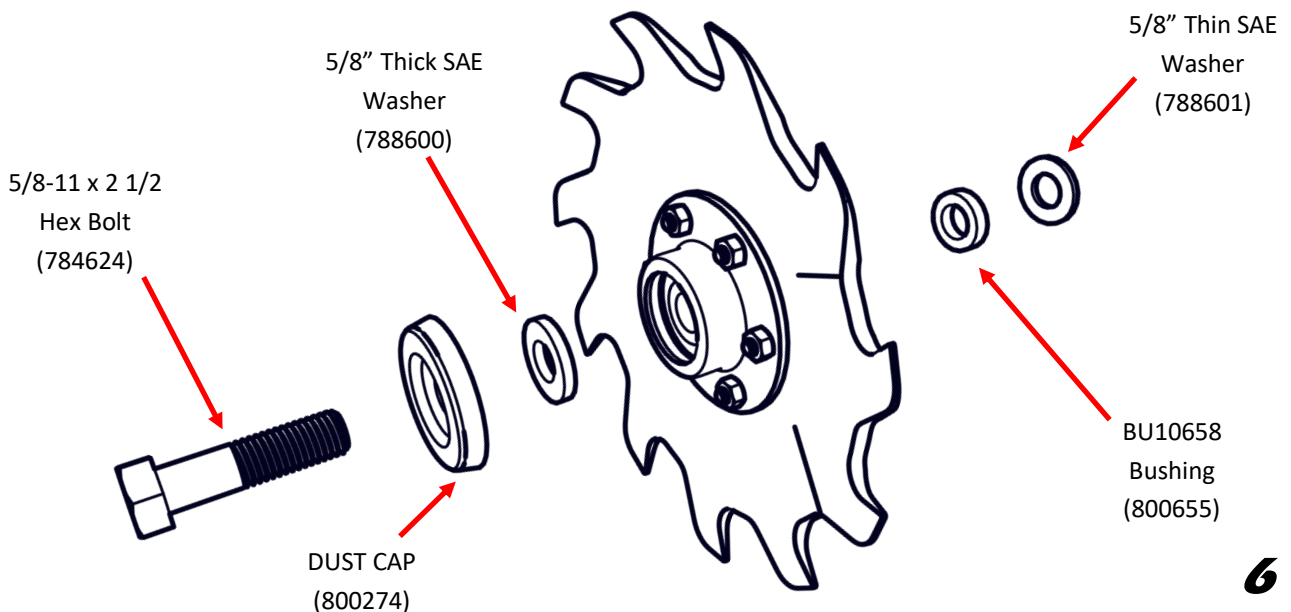
Rotation Direction

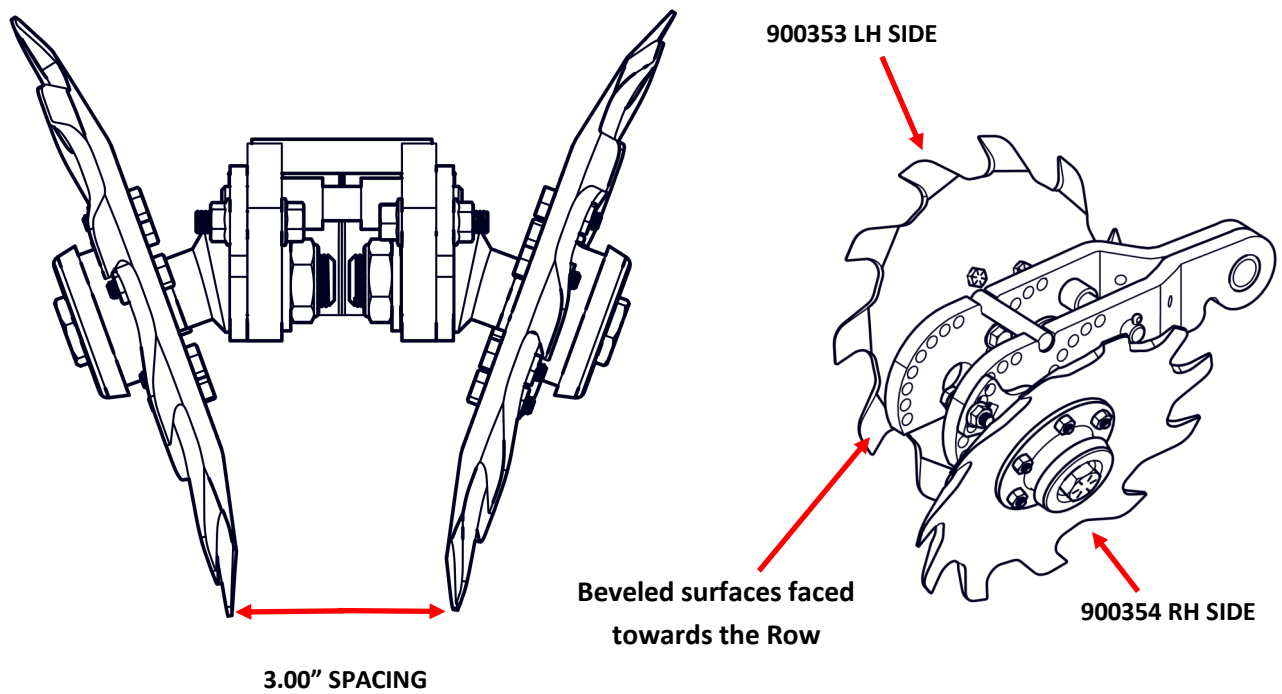
Hardware Provided

1) 5/8" x 2 1/2" Bolt (784624)	Qty 2
2) BU10658 Bushing (800655)	Qty 2
3) 5/8" Thick Washer (788600)	Qty 2
4) 5/8" Thin Washer (788601)	Qty 4
5) Dust Cap (800274)	Qty 2

BSCW9ZC-S ASSEMBLY INSTRUCTIONS: (Can skip if wheels came preassembled)

- 1) Place the 800892/800893 wheel on to the 900256 hub and fasten with 1/4 x 3/4 Torx Head Bolts (771106) and 1/4 Hex Nuts (776101).
- 2) Align one 5/8" SAE thick washer (788600) on top the hub followed by dust cap (800274).
- 3) Insert the 5/8"-11 bolt thru 800384 hub then add BU10658 (800655) between the axle face and the bearing. Additional washers included to put behind between the BU10658 and the Axle to change spacing if desired.



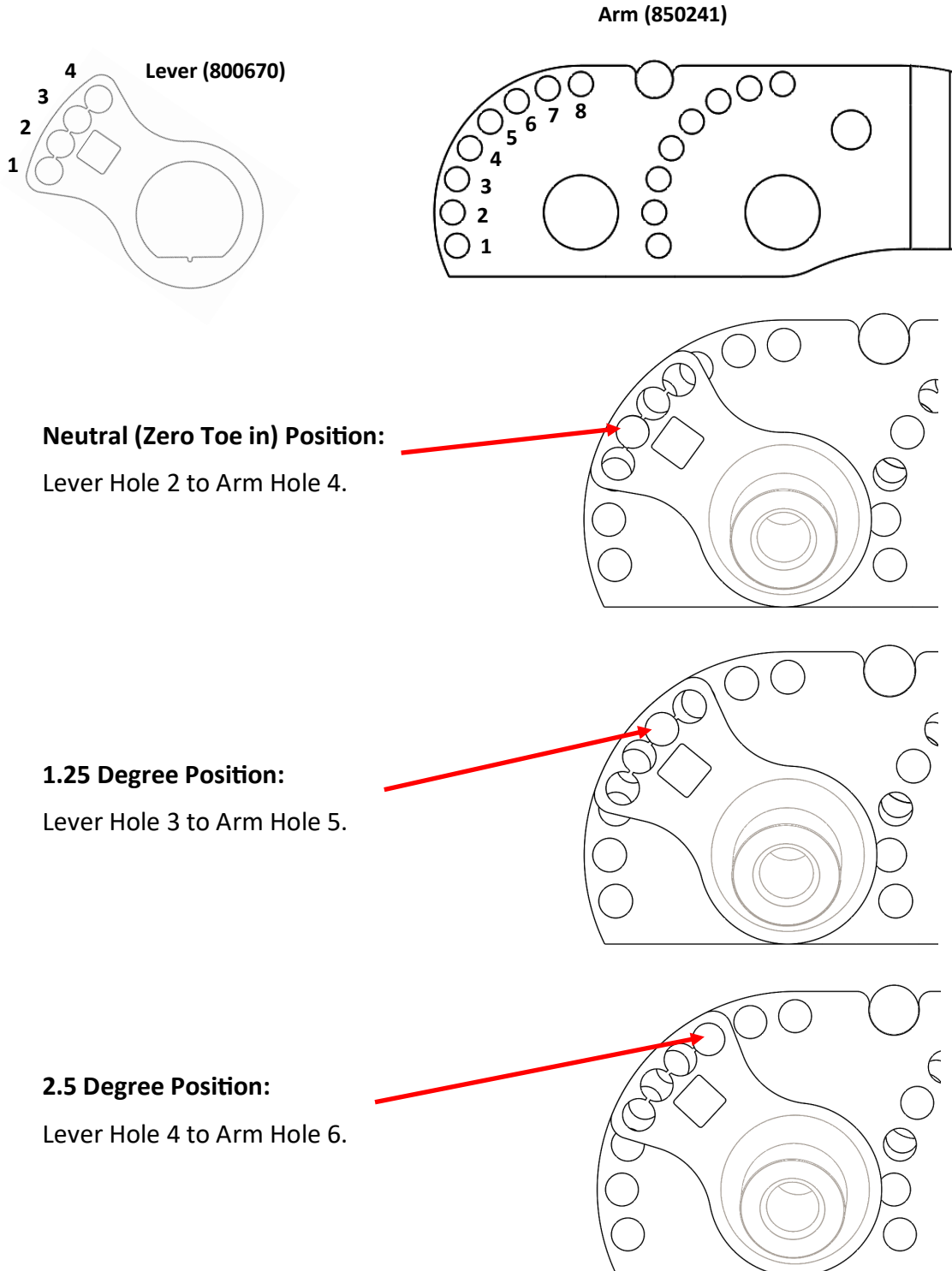


6) Repeat the assembly instructions for the Left hand side/opposite assembly.

STEP 9: ADJUSTING WHEEL TOE-IN

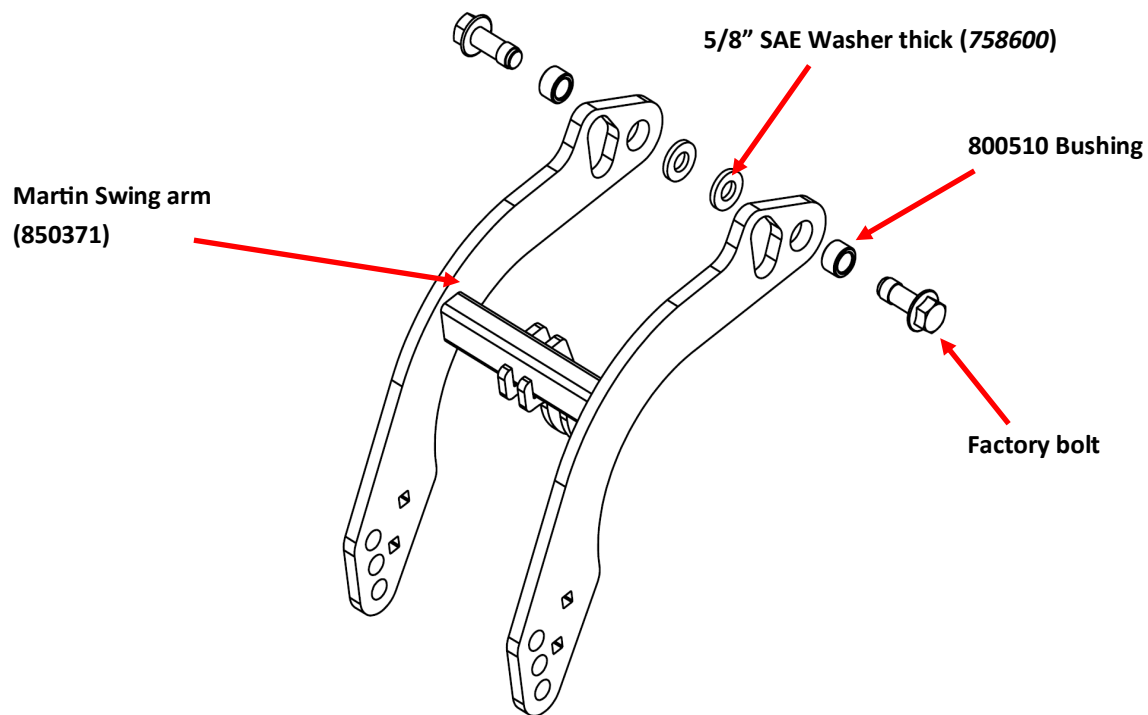
Wheel Toe-in can be adjusted independently on each side providing more flexibility to adjust seed trench closure based on varying soil conditions.

To adjust, remove bolt and nut and rotate the adjustment lever (800670) clockwise or counter-clockwise as viewed below. By alternating bolt in holes in Lever and in the arm, finer adjustments can be made. See below.

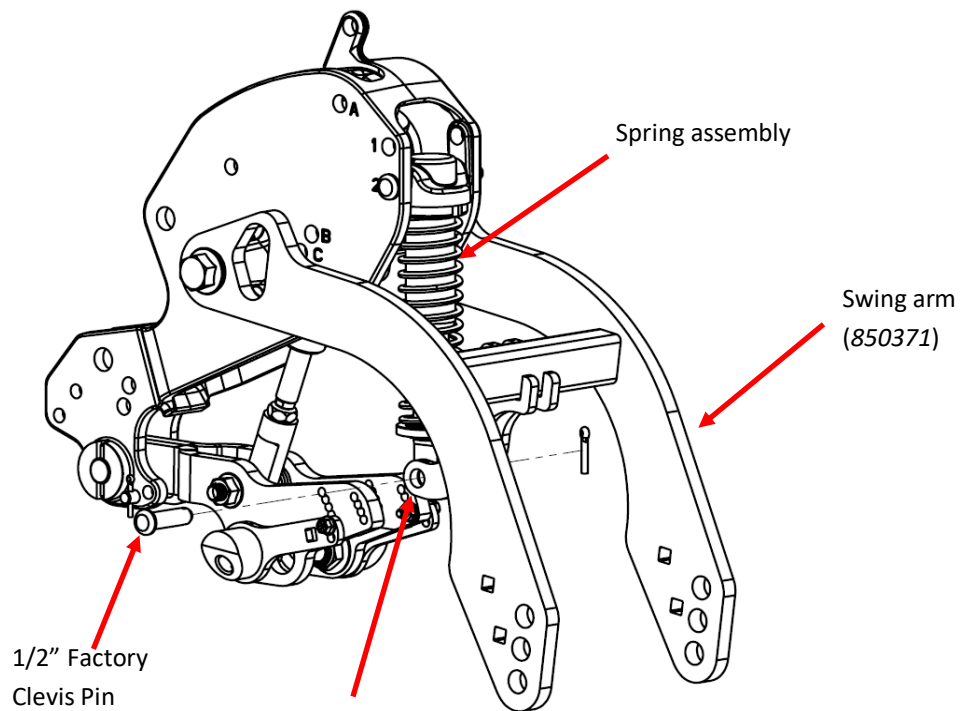


STEP 10 : INSTALL THE SWING ARM

Install new swing arm (if ordered) with provided 800510 Bushing and 5/8 Thick washer as shown below with Factory mounting bolt removed earlier.



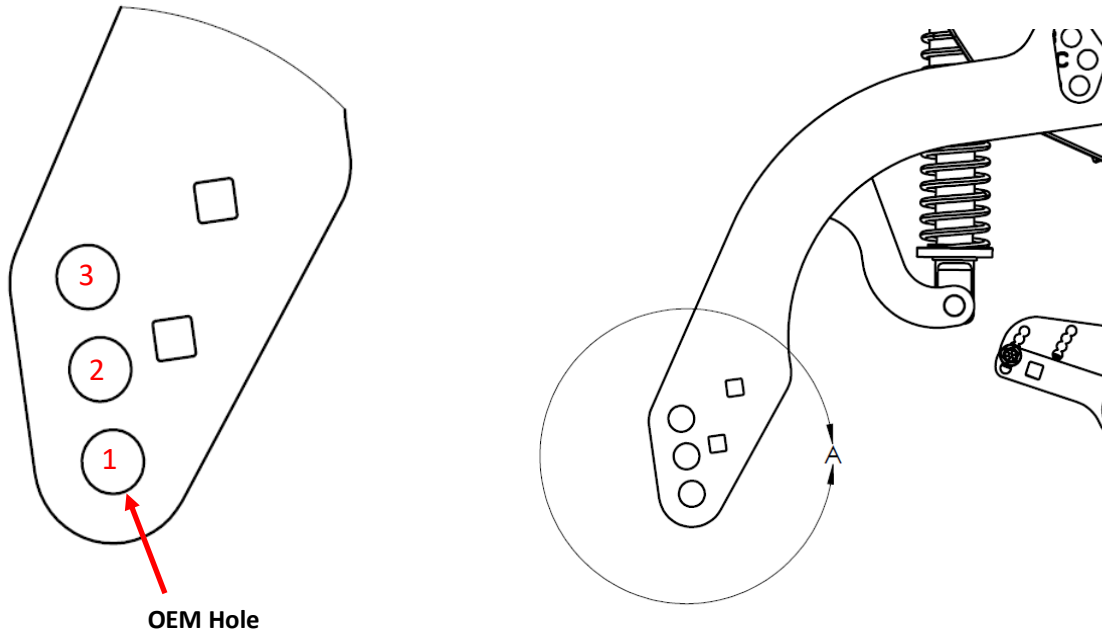
Reattach the factory spring assembly to the (900249) Swing arm by using existing Hardware.



Attach the Spring assembly to the Swing Arm through these brackets

STEP 11 : INSTALL THE PRESS WHEEL

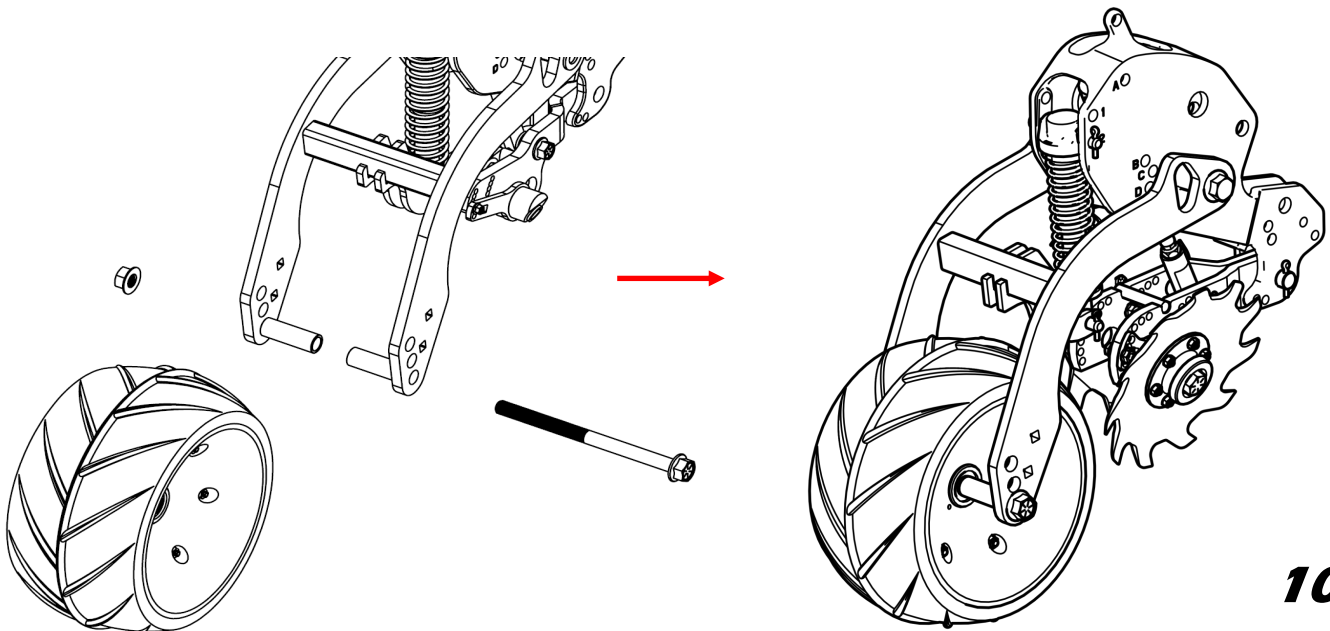
The New Martin Swing arm comes with different wheel arrangements apart from the OEM setup for the wheel



HOLE NUMBER 1 : The Hole number 1 will place the wheel in the **OEM** Location.

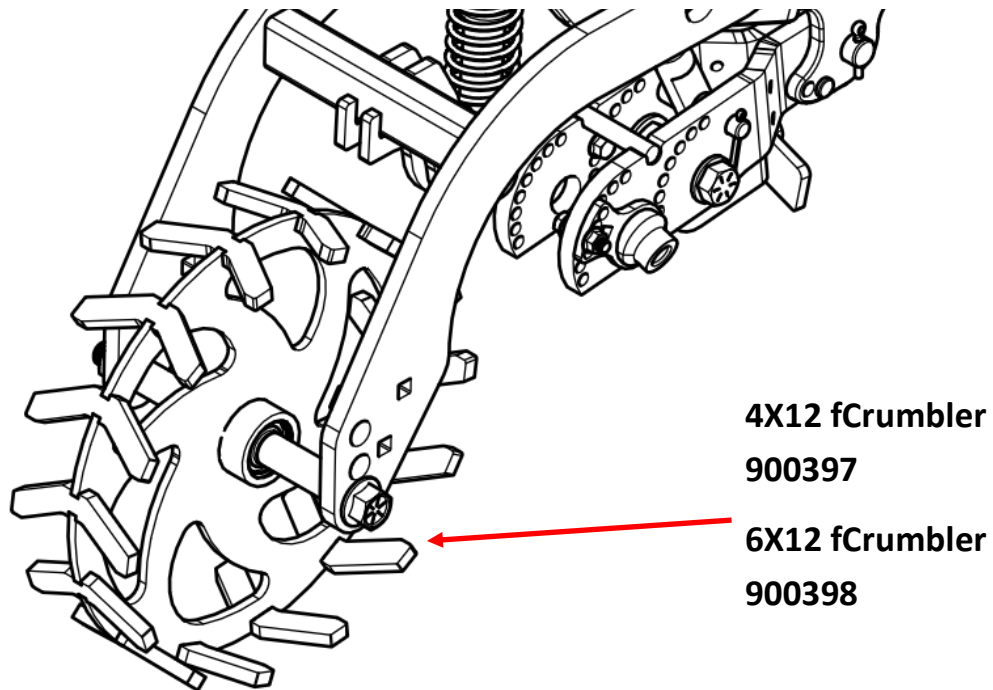
HOLE NUMBER 2 and 3 : The Hole number 2 and 3 can be used to reduce pressure in addition to the spring adjustment.

Once the Hole is determined, aligned the wheel to that chosen hole with the factory spacers on both sides, and the insert the long factory bolt through it and secure the other end with flange nut.



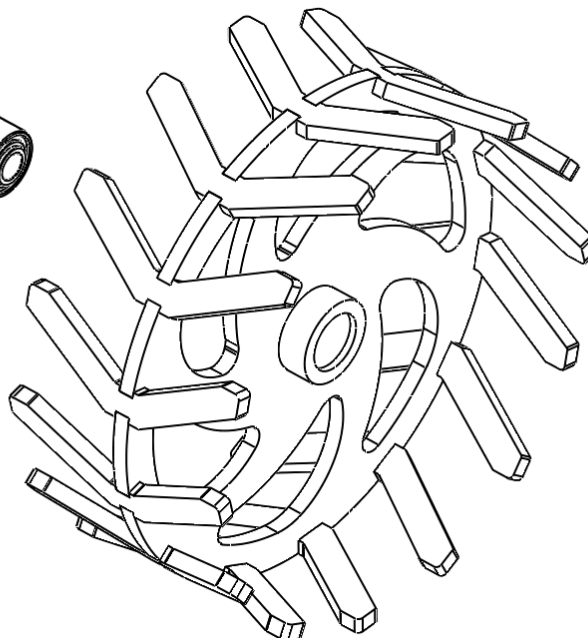
fCrumbler (4x12 & 6x12)

Also available is our fCrumbler 4 x 12 and 6 x 12 Press wheels as shown below. Install with the same spacers and hardware as the factory Press Wheel.

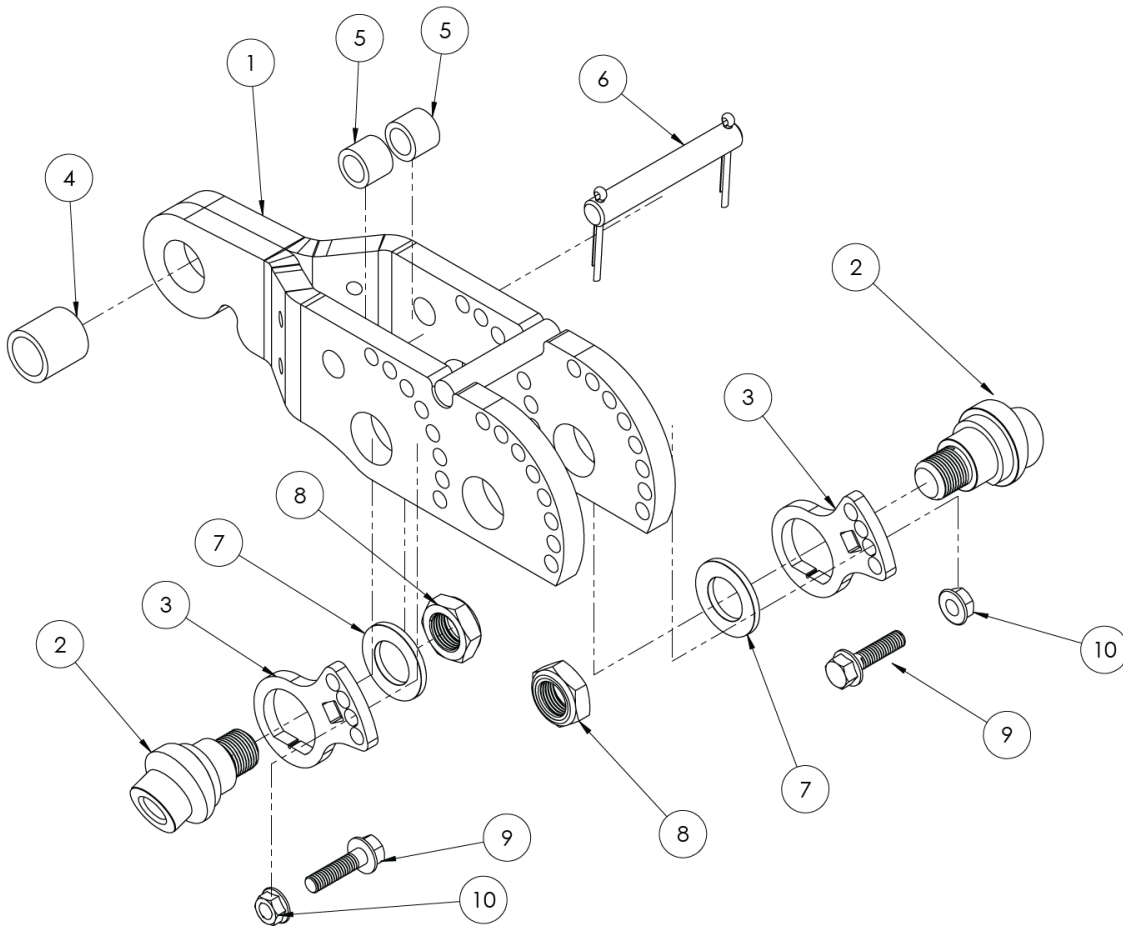


**1 9/16 Snap Ring
(709092)**

**5203KMF Bearing
(800357)**

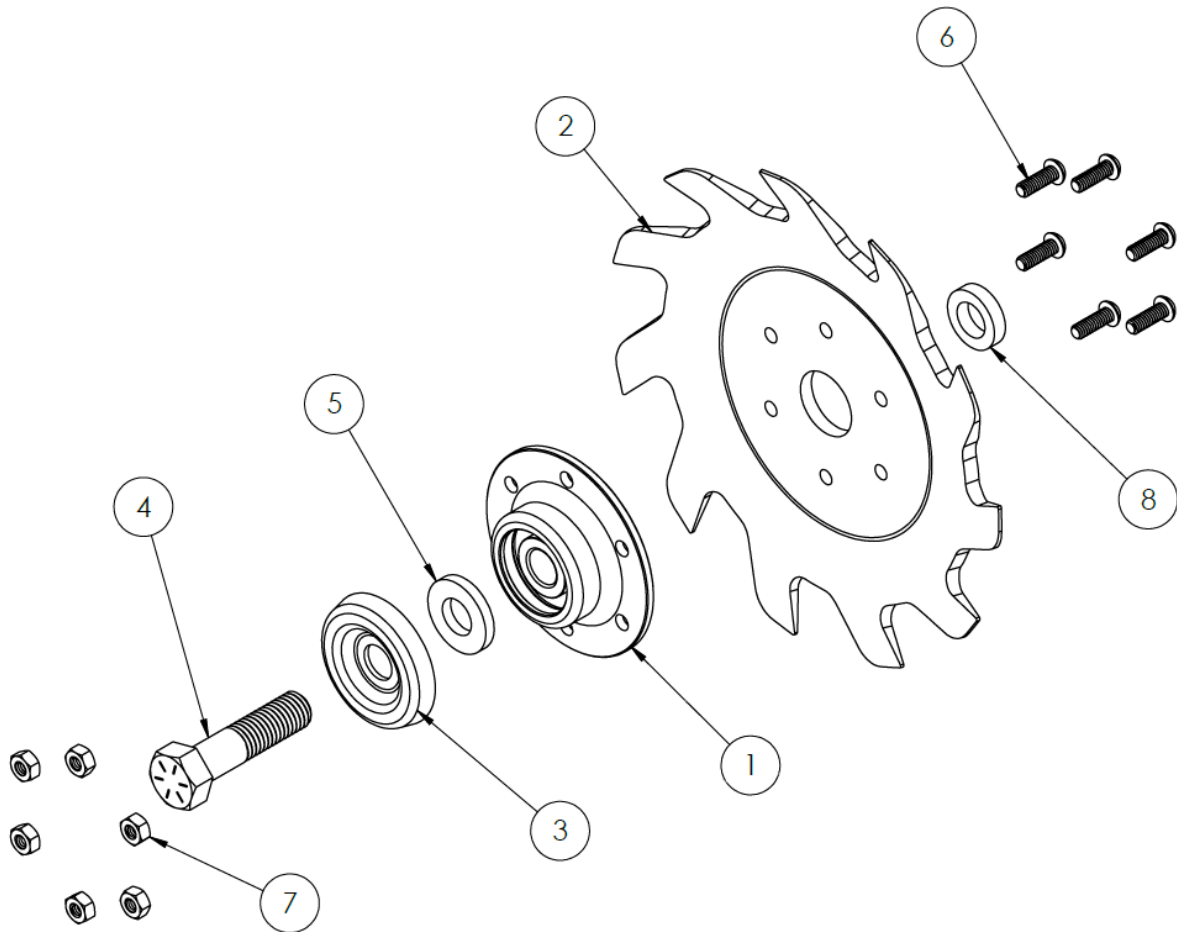


900365 Exploded View



ITEM NO.	PART NUMBER	DESCRIPTION	QTY.
1	850241	FRAME, CNH 2000 V CLOSER	1
2	800654	AXLE, STUB CAMBER ADJUST 20 DEG	2
3	800670	BRKT, LEVER CNH2000 CLOSER	2
4	800686	BUSHING, 1" OD X .75" ID X 1" L	1
5	800687	BUSHING, .75" OD X .516" ID X .595"L	2
6	709054	PIN, 1/2 X 3.5 HEADLESS W/COTTERS	1
7	788700	WASHER, 3/4 SAE PLAIN	2
8	787701	NUT, 3/4-16 THIN NYLOCK ZY	2
9	783212	BOLT, 5/16-18X1.25 FLANGE ZY	2
10	785200	NUT, 5/16-18 FLANGE TRI LOCK ZY	2

Exploded View For BSCW9ZC



ITEM NO.	PART NUMBER	DESCRIPTION	QTY.
1	900256	HUB, 204 BEARING AND HUB W SPACER PREINSTALLED	1
2	800893	WHEEL, 9" X 1/4" RAZOR 11 TOOTH CUPPED LH	1
3	800274	CAP, 6 BOLT STAMPED STATIONARY DUST, MGD5627	1
4	754624	BOLT, 5/8-11X2.5 HEX ZY	1
5	758600	WASHER, 5/8 SAE 21/32 ID 3/16 THICK ZY	1
6	771106	BOLT, 1/4-20X.75 TORX BUTTON ZP	6
7	776101	NUT, 1/4-20 TRI LOCK	6
8	800655	SPACER, 1 1/16"OD X 5/8" ID X 1/4" L	1

NOTES



The most trusted name in no-till
Established 1991

Martin Industries LLC

206 Elk Fork Road

Elkton, KY 42220

Telephone: 270-265-5817

E-Mail: martin@martintill.com