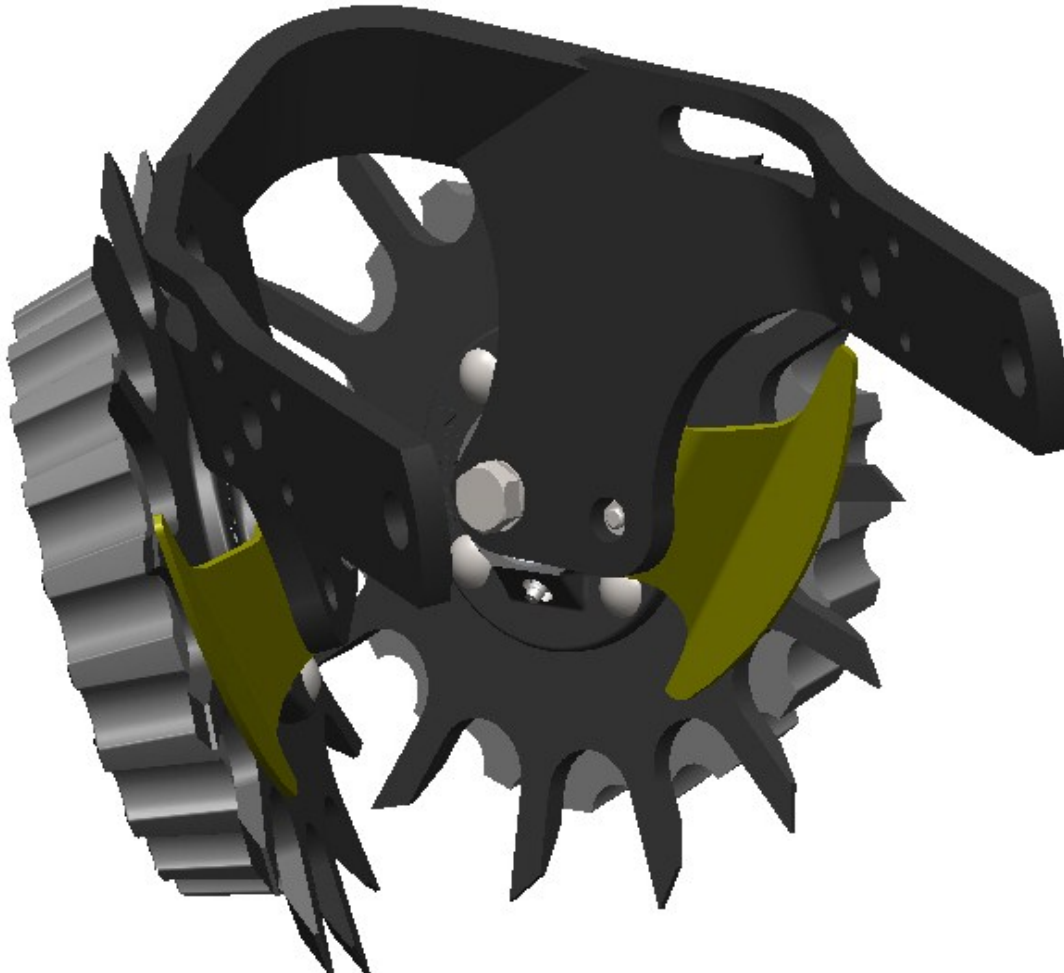


DLD-02

D-Lock Deflector for 1360 Frame

Installation Instructions



Martin Planter Attachments

Martin Industries LLC

206 Elk Fork Road

Elkton, KY 42220

Telephone: 270-265-5817

E-Mail: martin@martintill.com

www.martintill.com

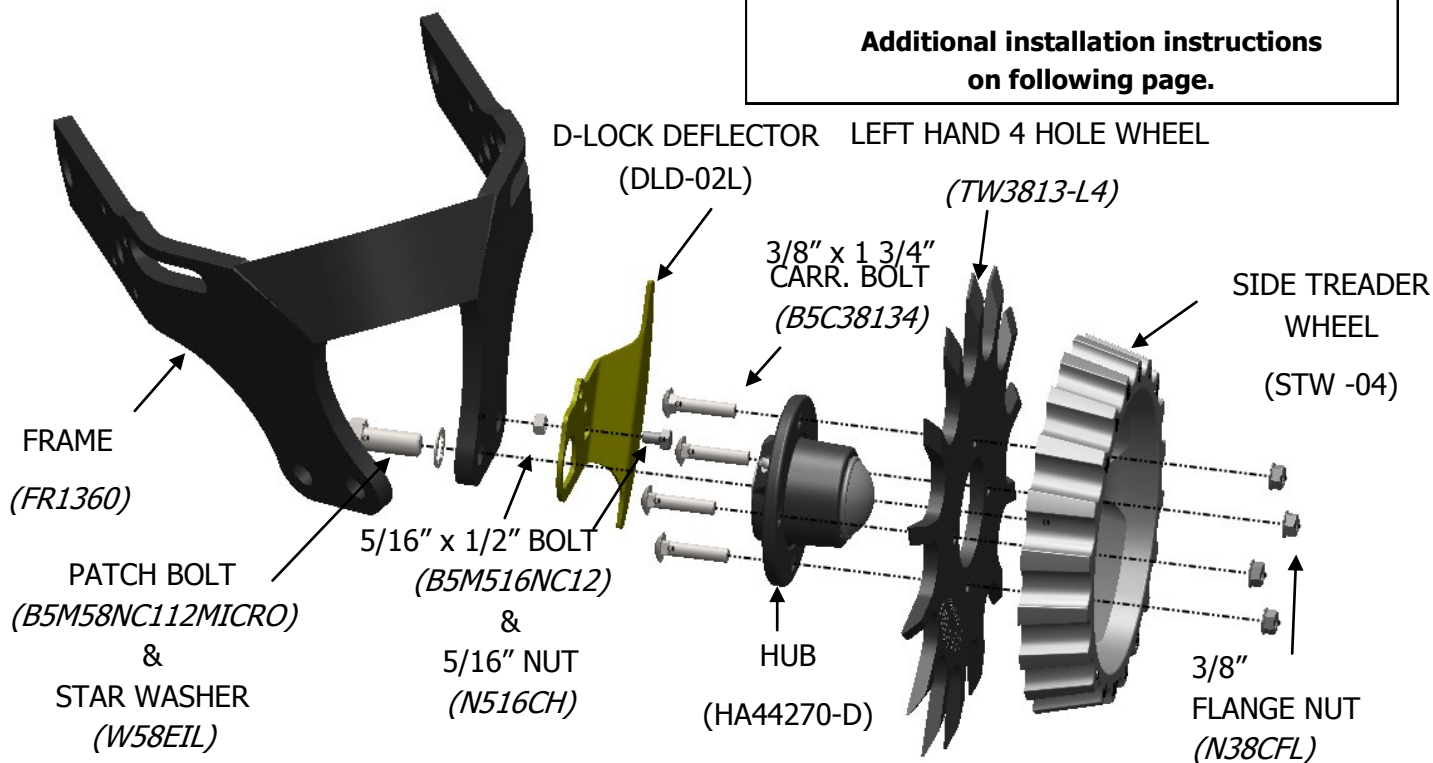
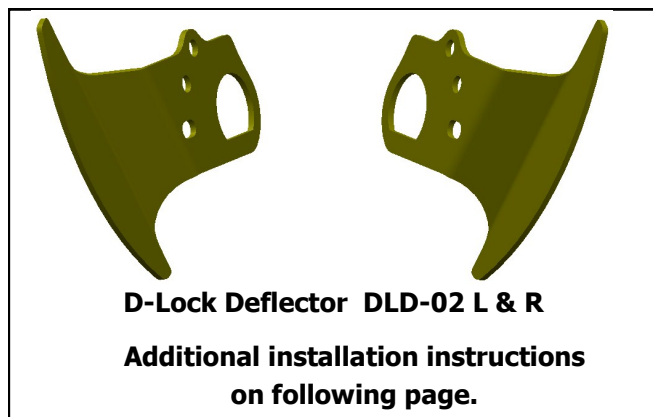


INSTALLING THE WHEEL ASSEMBLY WITH D-LOCK

DEFLECTOR (DLD-02) TO THE 1360 FRAME

The D-Lock deflector is recommended (instead of the D-Lock) when operating in wetter conditions or damp stringy residue to help reduce wrapping.

- 1) Attach the D-lock deflector (DLD-02L) to the end of the hub axle making sure it is flush with the end of the axle before bolting the axle to the frame.
- 2) Secure the hub to the frame with the 5/8" bolt and star washer and torque to 200 ft. lbs. Re-tighten after first day's use.
- 3) Install the toothed wheel (part number to the outside) and side treader wheel on the hub with the four carriage bolts and flange head nuts. Torque to 60 ft. lbs. Re-tighten after first day's use.
- 4) The wheel marked TW3813-L4 is for use on the left side of the frame (as viewed from behind the machine). Repeat for opposite side.

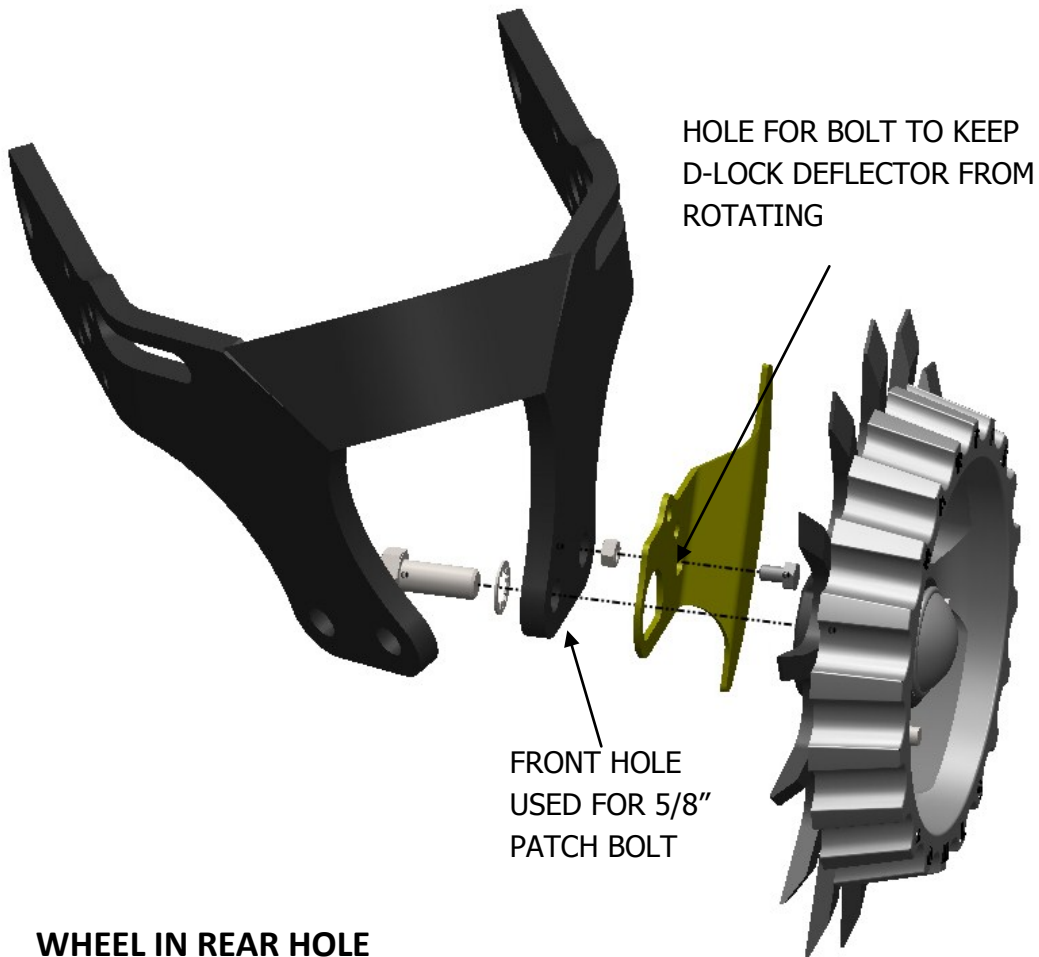


Hardware Required Per Wheel

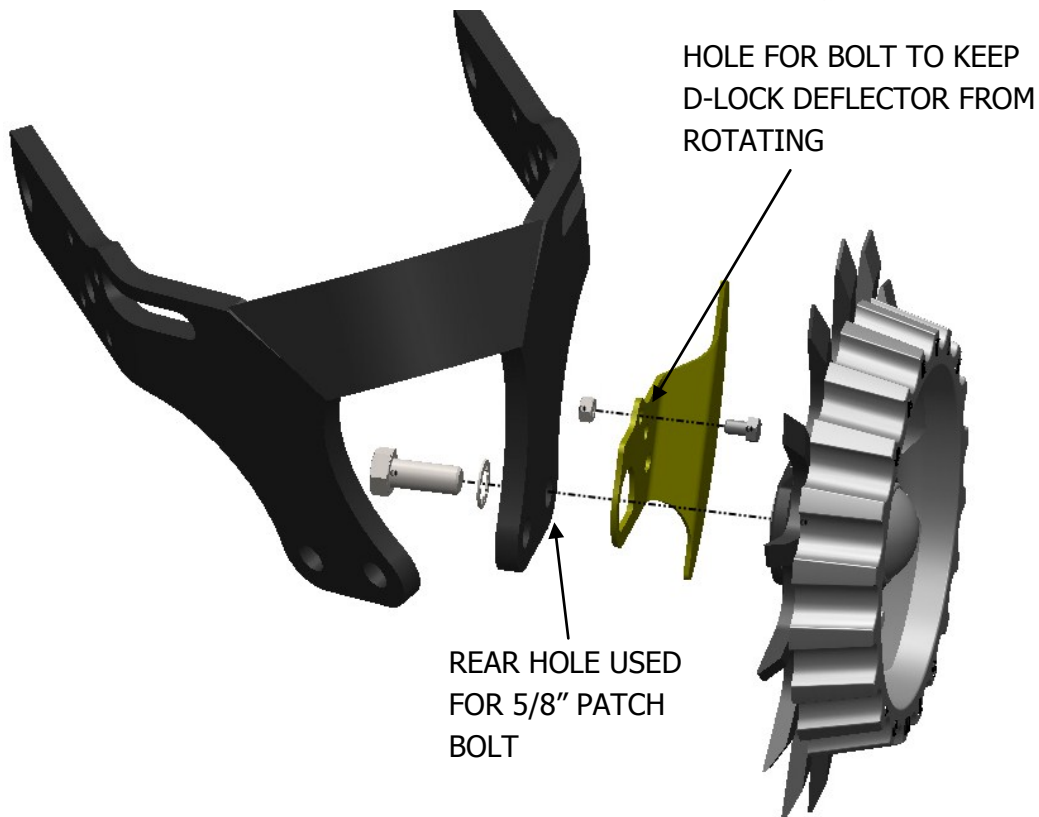
1) 3/8" x 1 3/4" Carriage Bolts	Qty 4	4) 5/8" Star Washer	Qty 1
2) 3/8" Nuts	Qty 4	5) 5/16" x 1/2" Bolt (for DLD-02)	Qty 1
3) 5/8" x 1 1/2" Patch Bolt	Qty 1	6) 5/16" Nut (For DLD-02)	Qty 1

**ATTACHING THE WHEEL WITH D-LOCK DEFLECTOR TO THE
FR1360 FRAME FOR DIFFERENT SOIL CONDITIONS**

WHEEL IN FRONT HOLE



WHEEL IN REAR HOLE



**ATTACHING THE WHEEL WITH D-LOCK DEFLECTOR TO THE
FR1360 FRAME FOR DIFFERENT SOIL CONDITIONS**

BOTH WHEELS IN FRONT HOLE



Both wheels forward provides maximum cleaning effect and the interlocked wheels till the middle of the seed row.

Note: The 5/16" D-Lock deflector bolt fits within the 5/8" patch bolt hole, to prevent rotation of the deflector.

**LEFT WHEEL IN FRONT HOLE
RIGHT WHEEL IN REAR HOLE**



The staggered configuration allows the toothed wheels to turn more easily in loose soil.

With this staggered configuration, we suggest running the left wheels in the rear hole on the left half of the planter and the right wheels in the rear hole on the right half of the planter (when viewed from behind).

Note: D-Lock deflector bolt fits up against the frame, when in the rear hole, not within the 5/8" patch bolt hole.