

# Martin-Till

WELCOME TO THE MARTIN-TILL® PLANTING SYSTEM



## Weight Transfer System

**For Deere 1770/1775  
12 , 16 & 24 Row Planters**

**Deere 1790/1795  
12 & 16 Row Planters**



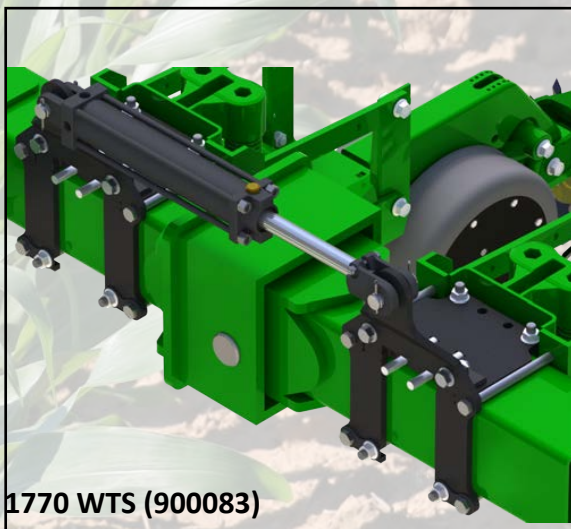
[martintill.com](http://martintill.com)

800.366.5817



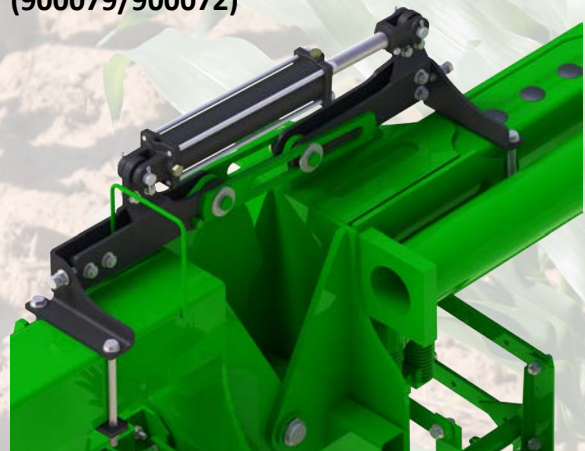


The Martin weight transfer system consists of bolt on brackets, a pressure relieving control valve, an in cab control box and the associated cabling. Transfer of the weight from the center of the planter to the wings reduces compaction and ground pressure, more evenly distributing the weight to where it is needed most to ensure uniform pressures and planting depths from the row units. The valve and control system respond to changes in pressure very quickly, so the system is well capable of maintain the pressures over rapidly changing field conditions without a problem.



1770 WTS (900083)

1790/1795 WTS  
(900079/900072)





### **Kit Includes:**

- In-Cab Control Box with harness (Electronic PWM version)
- Bolt on brackets
- Grade 8 mounting hardware
- Industry standard durable hydraulic valve
- NOTE: Kit does not include custom hydraulic hoses or fittings
- Check fit up for Center Frame Mounted Fertilizer Tanks and Brackets for possible tank mounting bracket modifications needed



- In-Cab Control Box—Allows for easy adjustment as you plant
- Hydraulic control kit provides durable and quick adjustment
- Rugged Electronic PWM control box allows for fine tuning of industry standard hydraulic valve





# WTS for 12 or 16 row JD1770/1775 (900083) or 24 Row (900244)

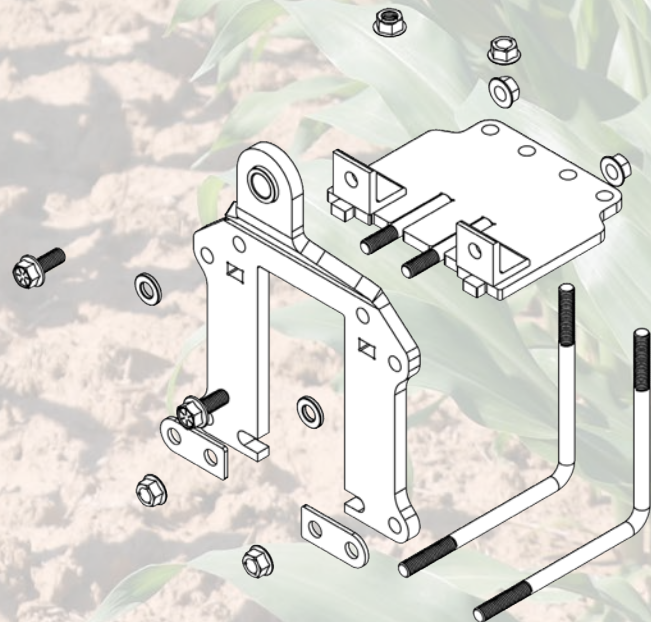


Patent Pending

Can be used with frame  
mounted openers



Interlocking tab  
and slot design  
fit together to  
transfer load to  
the tool bar

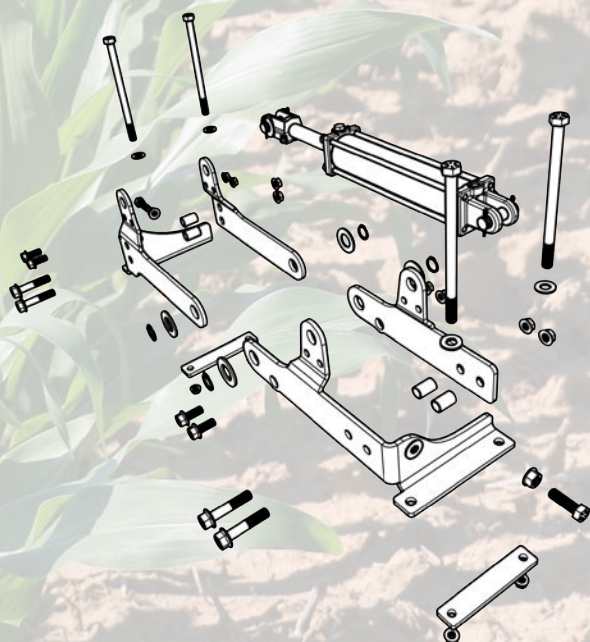




## WTS for 16 row JD1790 (900079) or JD1795 (900072)



- Bolt-On Bracket design (no welding) provides easy installation
- Combination of L bolts and row unit mounting bolts pulling in two directions ensure brackets stay put



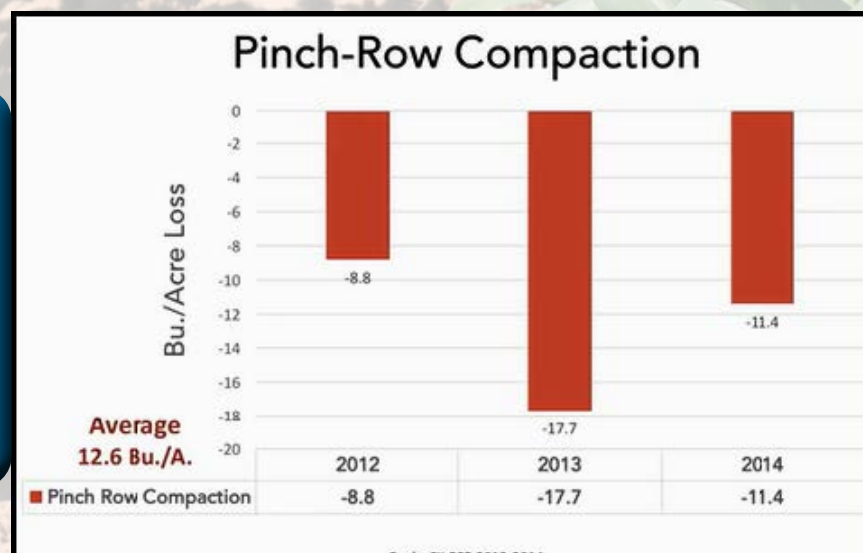


# Pinch Row Compaction



- Pinch row compaction leads to shorter, stunted plants, restricted roots and ultimately yield loss.
- Pinch-row compaction can have a negative consequence to getting crops off to the right start.
- Issues that can occur due to side-wall compaction include poor germination, non-uniform emergence, limit crop development and restricted root establishment and growth.
- Restricted root growth will negatively impact nutrient uptake even when soil test values indicate sufficient nutrition.

**Three-year Practical Farm Research (PFR)<sup>®</sup> shows an average of 12.6 Bu./A. yield loss on pinch rows from central-fill planters.**





**Compaction reduces plant vigor and yield. Shallow or inconsistent planting due to poor control of planter wings also robs yield. Most planters have a “weight problem”. Excess weight in the center of the planter or improper weight distribution is a constant concern.**



**Stunted roots from pinch rows on the left are dramatically smaller than the roots from corn planted by the planter wings.**

**Worried about the constant changing downforce fluctuations as you plant seed and apply fertilizer?**

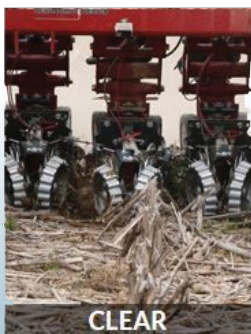
***The MartinTill WTS is your planter's solution!***





**See more Martin-Till Planter Attachments on the web!**

*Go to [www.MartinTill.com](http://www.MartinTill.com) and Browse the Store and Product Catalog*



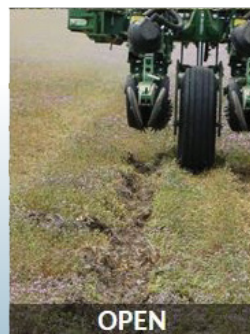
**CLEAR**



**CONTROL**



**FERTILIZE**



**OPEN**



**CLOSE**

**Contact Us:**

**Martin Industries**

**206 Elk Fork Rd**

**Elkton, KY 42220**

**United States of America**

**800.366.5817 or [sales@martintill.com](mailto:sales@martintill.com)**

